



[www.lanagrossa.com](http://www.lanagrossa.com)

# JACKET • ABOUT BERLIN CHILLY

Design 02 from Lookbook 06

Photo: © Nicolas Olonetzky c/o Bascha Kickl Fotografen, [www.bascha-photographers.de](http://www.bascha-photographers.de)

# JACKET • ABOUT BERLIN CHILLY

## Design 02 from Lookbook 06



www.lanagrossa.com

**Size** 36 (38/40, 42/44)

Instructions are given for first size. Figures in parenthesis refer to larger sizes. When only one figure is given, it applies to all sizes.

**Materials:** 400 (450, 500) g of Lana Grossa **About Berlin Chilly** (100% linen; 95 m/50 g) in Red (**col 6**). Size 6 mm needles; seven 15 mm buttons [by Union Knopf, item 46286, col 48].

**Rib patt:** K2, p2.

**Vertical drop st patt:** Work according to chart. Numbers at right edge of chart indicate RS rows, numbers at left edge of chart indicate WS rows. Work to patt rep, work patt rep between arrows throughout, work to end of chart. Rep rows 1 – 20.

**2 selvage stitches:** At beg of RS rows, k1, sl 1 pwise wyib, pulling yarn tight; at end of RS rows, work to last 2 sts, sl 1 pwise wyib, pulling yarn tight, k1. At beg of WS rows, sl 1 pwise wyif, pulling yarn tight, p1; at end of WS rows, work to last 2 sts, p1, sl 1 pwise wyif, pulling yarn tight.

**Gauge:** 19 sts and 20.5 rows = 10 x 10 cm in vertical drop st patt on size 6 mm needles.

**Back:** With size 6 mm needles cast on 83 (93, 103) sts. P 1 WS row. Work in vertical drop st patt according to chart until piece meas 30 cm from cast-on, ending with a WS row. Shape armholes: Bind off 3 sts at beg of next 2 rows, 2 sts at beg of next 4 rows, 1 st at beg of next 6 rows = 63 (73, 83) sts. Cont in patt until piece meas 48 (50, 52) cm from cast-on, ending with a WS row. Shape neck: Next row (RS): Bind off center 31 sts. Working each side separately, bind off 2 sts at each neck edge once, 1 st once. At same time, when piece meas 2 cm from beg of neck shaping, shape shoulders as foll: At each shoulder edge, bind off 5 (6, 7) sts once, 4 (6, 8) sts twice. No sts rem.

**Left front:** With size 6 mm needles cast on 48 (54, 58) sts. P 1 WS row. Next row (RS): For size 36 only: Work vertical drop st patt over 42 sts: Beg with selvage st, work patt rep 4 times, work st after patt rep, then work p2, k2, 2 selvage sts for front

band. For size 38/40 only: Work vertical drop st patt over 48 sts: Beg with selvage st, work patt rep 4 times, work first 7 sts of patt rep once more, then work p2, k2, 2 selvage sts for front band. For size 42/44 only: Work vertical drop st patt over 52 sts: Beg with selvage st, work patt rep 5 times, work st after patt rep, then work p2, k2, 2 selvage sts for front band. For all sizes: Cont in patt until piece meas 30 cm from cast-on, ending with a WS row. Shape armhole at right edge same as for back = 38 (44, 48) sts. Cont in patt until piece meas 41.5 (43.5, 45.5) cm from cast-on, ending with a RS row. Shape neck: Next row (WS): Patt over 6 sts, sl sts to holder, patt to end. Cont in patt, bind off 3 (4, 3) sts at beg of next WS row, 2 sts at beg of next 8 WS rows. At same time, when same length as back to shoulder, shape shoulder at right edge same as for back. No sts rem.

**Right front:** Work same as for left front, reversing all shaping and patt placement and working 7 buttonholes at beg of RS rows as foll: Patt over 4 sts, [p2tog, yo] for buttonhole, patt to end. Work first buttonhole when piece meas 2.5 cm from cast-on and rem 6 buttonholes spaced evenly apart to beg of neck shaping.

**Sleeves:** With size 6 mm needles cast on 43 (53, 53) sts. P 1 WS row. Work vertical drop st patt according to chart until piece meas 14 cm from cast-on, ending with a WS row. Shape sleeve: Next row (RS): Work in patt, inc 1 st at each end of row = 45 (55, 55) sts. Cont in patt, rep inc row every 10th row 5 times (every 14th row once, then every 12th row 3 times / every 8th row 6 times, then every 6th row twice) = 55 (63, 71) sts. Work increased sts into patt. Work even until piece meas 42 (44, 46) cm from cast-on, ending with a WS row. Shape sleeve cap: Bind off 3 sts at beg of next 2 rows, 2 sts at beg of next 2 rows, 1 st at beg of next 22 rows, 2 sts at beg of next 4 rows. Bind off rem 15 (23, 31) sts.

**Finishing:** Pin pieces to measurements and block. Sew shoulder seams. **Left neckband:** With size 6 mm needles cast on 1 st, then with RS facing, patt over 6 held left front sts = 7 sts. Cont in patt for approx. 30.5 cm. Place sts on holder. **Right neckband:** With size 6 mm needles and RS facing, patt over 6 held right front sts, cast on 1 st = 7 sts. Complete as for left neckband. Join right and left neckband and sew to front and back neck. Sew in sleeves. Sew side and sleeve

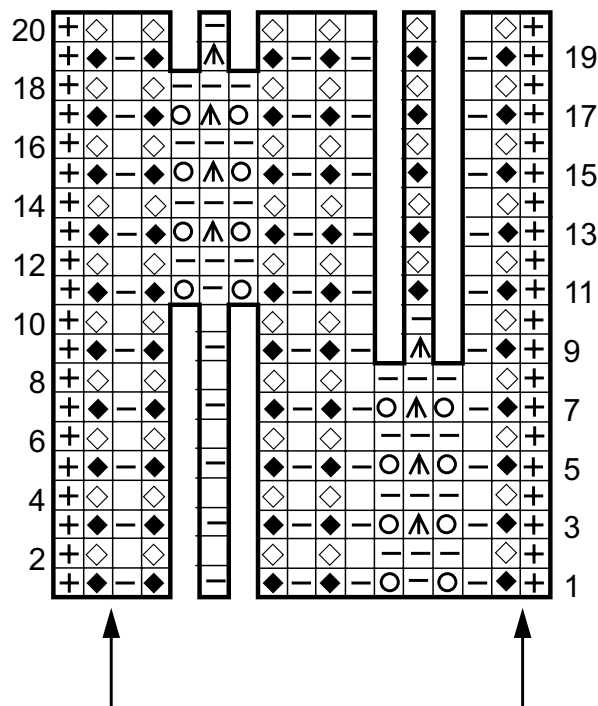
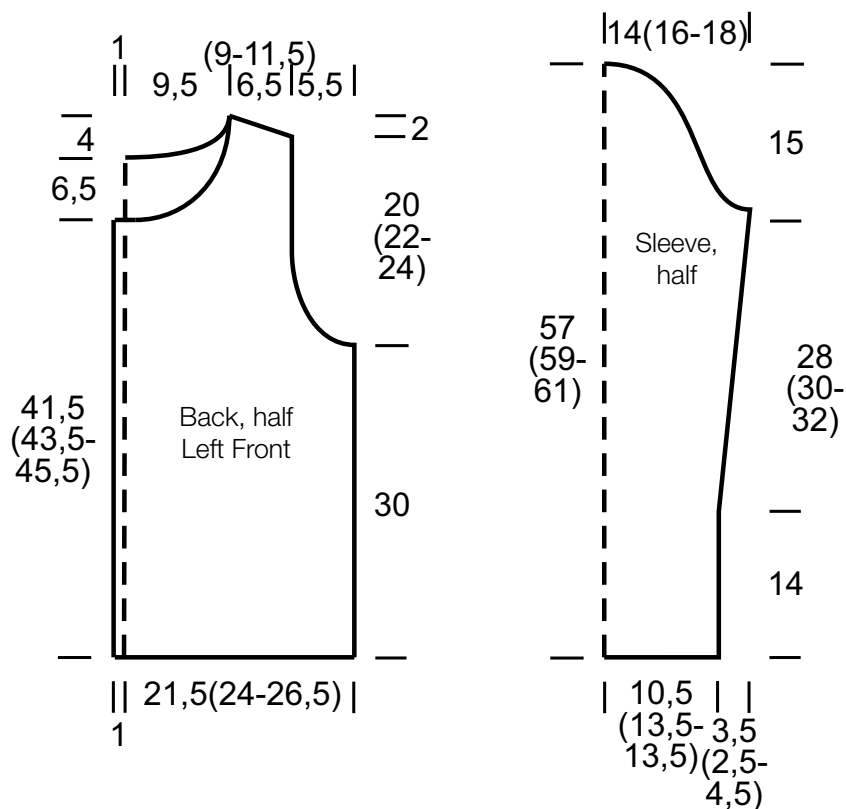


# JACKET • ABOUT BERLIN CHILLY

Design 02 from Lookbook 06



www.lanagrossa.com



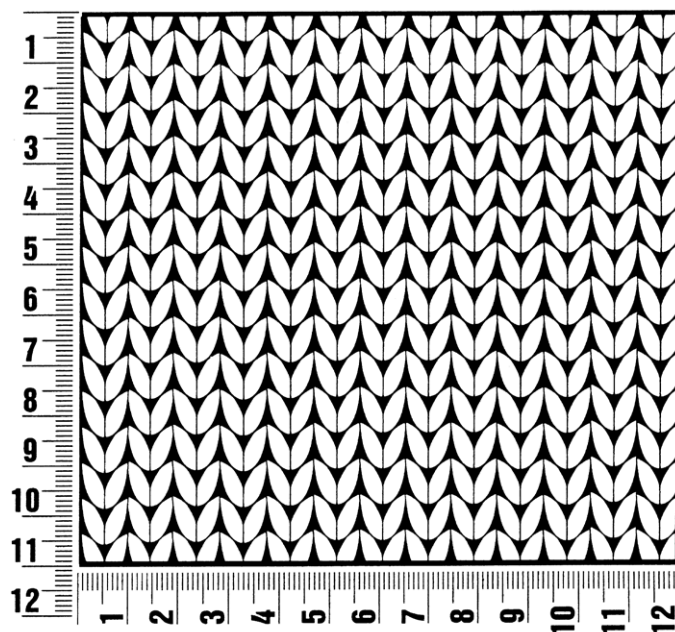
## Chart key:

- ⊕ = selvage st
- = k1
- ◻ = p1
- ◆ = k1tbl
- ◼ = p1tbl
- ⊗ = yo
- ⊠ = sk2p: sl 1 kwise, k2tog, pass slipped st over knitted st

## Gauge Swatch

### Before you begin ...

...make a gauge swatch. Use the recommended needles, yarns and pattern stitch for your gauge swatch. It should measure approx. 12 cm x 12 cm. Cast-on and bind-off rows, as well as selvage stitches should not be included in the measurement. Pin your swatch and block it as you would the finished pieces of the garment. Count stitches and rows over 10 cm. If your gauge swatch is too small, switch to larger needles. If your gauge swatch is too big, switch to smaller needles.



## Abbreviations

**beg** = begin(ning) · **ch** = chain · **cont** = continue · **dec** = decreas(e)(ing) · **inc** = increas(e)(ing) · **k** = knit · **kwise** = as if to knit  
**meas** = measures · **M1L** = lift strand between sts from front to back and knit this strand through the back loop · **M1R** = lift strand between sts from the back and knit this strand through the front loop · **patt** = pattern · **pm** = place marker · **p** = purl  
**pwise** = as if to purl · **rem** = remain(ing) · **rep** = repeat(s) · **rev St st** = reverse stockinette stitch · **rnd(s)** = round(s) · **RS** = right side · **sc** = single crochet · **skp** = slip 1 stitch as if to knit, knit 1 stitch, pass slipped stitch over knitted stitch · **sk2p** = slip 1 stitch as if to knit, knit 2 together, pass slipped stitch over knitted stitch · **s2kp** = slip 2 stitches as if to knit, k 1 stitch, pass slipped stitches over knitted stitch · **sl** = slip · **st(s)** = stitch(es) · **St st** = stockinette stitch · **tbl** = through the back loop · **tog** = together · **wyib** = with yarn in back of work · **wyif** = with yarn in front of work · **WS** = wrong side · **yo(s)** = yarn over(s)

### Publisher's Info

**Publisher:** Lana Grossa GmbH, Gaimersheim, [www.lanagrossa.com](http://www.lanagrossa.com)  
**Photographer:** Nicolas Olonetzky c/o Bascha Kicki Fotografen, [www.bascha-photographers.de](http://www.bascha-photographers.de)