



www.lanagrossa.com

TUNIC · ABOUT BERLIN CHILLY

Design 18 from Filati Journal 57

TUNIC • ABOUT BERLIN CHILLY

Design 18 from Filati Journal 57



www.lanagrossa.com

Size 34 – 38
One size fits all

Materials: 250 g of Lana Grossa **About Berlin Chilly** (100% linen; 95 m/50 g) in Olive **(col 2)**. Size 6 and 7 mm circular needles, each 80 cm long; size 4.5 mm crochet hook.

Lace and drop st patt: Work according to chart A. Numbers at right edge of chart indicate rnds. Work all rnds from right to left. Work sts between arrow a and c around. Work rnds 1 – 12 once, then work rnds 9 – 12 a total of 5 times = 32 rnds, then work rnds 33 – 44 once, then rep rnds 45 – 48 throughout.

Lace patt: Work according to chart B. Numbers at right edge of chart indicate RS rows, numbers at left edge of chart indicate WS rows. Work to patt rep, work 8 sts between arrows for patt rep, work to end of chart. Rep rows 1 – 4.

Full-fashion dec: At beg of RS row, selvage st, k2tog; at end of RS row, work to last 3 sts, skp, selvage st.

Gauges: 10 sts and 15 rnds = 10 x 10 cm in lace and drop st patt on size 7 mm, measured after sts have been dropped; 15 sts and 18 rows = 10 x 10 cm in lace patt on size 6 mm needles.

Body: Work in one piece in the rnd to underarm. With size 7 mm circular needle cast on 128 sts Place beg of rnd marker and join for working in rnds. Work lace and drop st patt according to chart A = 128 sts at end of rnd 44. Change to size 6 mm circular needle. Cont in patt for 10 cm. Divide for front and back: Place last 64 sts worked on holder for back = 64 sts rem for front. Work lace patt according to chart B back and forth in rows across front sts only. **Front:** Shape armholes: Working full-fashion dec, dec 1 st at each end of next 15 RS rows = 34 sts. Note: When working shaping, make sure each yo is paired with a decrease and vice versa. Work even in patt until armhole meas 20 cm. Bind off all sts. **Back:** Return 64 held back sts to needle and with RS facing, rejoin yarn. Divide back at center for slit = 32 sts each side. Working each side separately, cast on 1 st at each slit edge = 33 sts each side. Work lace patt according to chart B and shape armholes same as for front = 18 sts each side. Work even in patt until armhole meas 20 cm. Bind off rem 18 sts for each shoulder.

Finishing: Pin piece to measurements and block. Sew shoulder seams over 1 cm. **Slit edging:** With size 4.5 mm crochet hook, work 1 row sc, then 1 row rev sc [work sc from left to right] along right and left slit edge. **Neck edging:** With size 4.5 mm crochet hook, work 1 rnd sc, then 1 rnd rev sc around neck edge, closing top of slit in the process. **Armhole edging:** With size 4.5 mm crochet hook, work 1 rnd sc, then 1 rnd rev sc around each armhole edge. **Note:** Tunic stretches approx. 7 cm in length when worn.

TUNIC · ABOUT BERLIN CHILLY

Design 18 from Filati Journal 57



www.lanagrossa.com

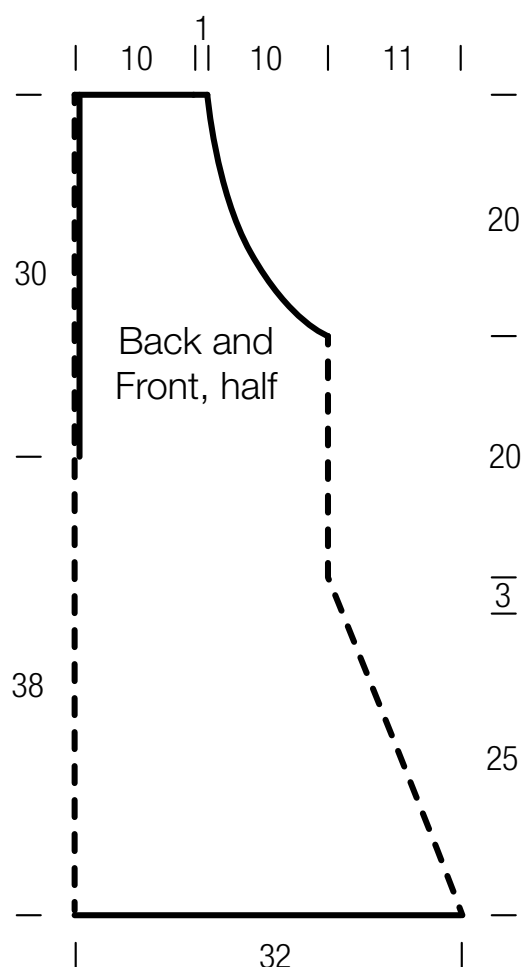


Chart A

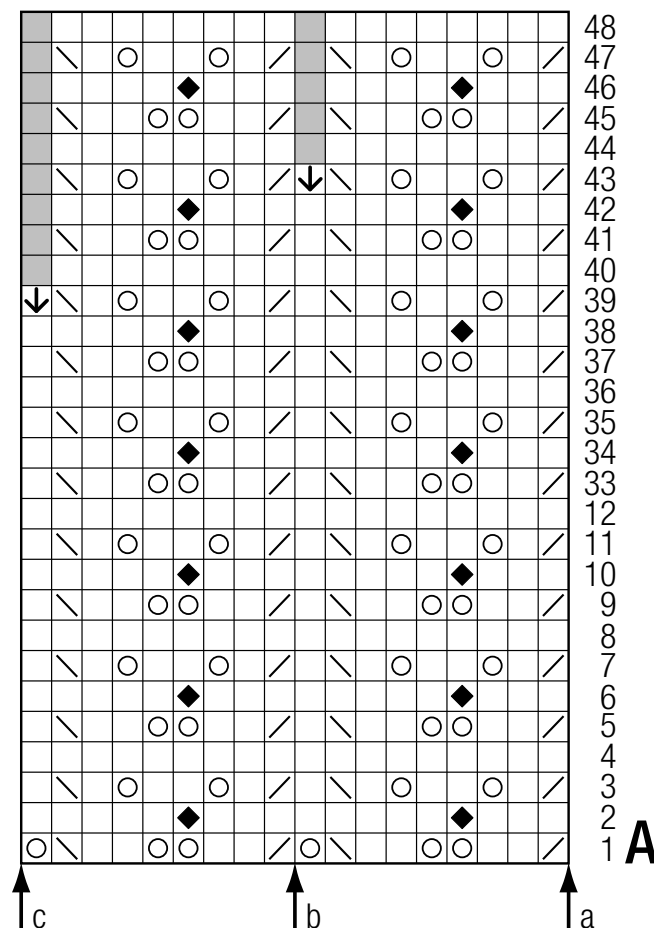
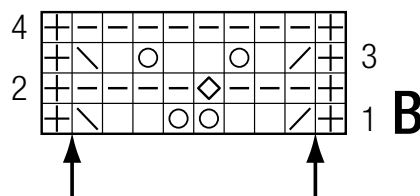


Chart key:

- ⊕ = selvage st
- = k1
- ▬ = p1
- = yo
- ◆ = k1tbl
- ◇ = p1tbl
- ⧻ = k2tog
- ↘ = skp: sl 1 kwise, k1, pass slipped st over knitted st
- = represents "no stitch" (included to keep st count correct)
- ⬇ = drop st from needle and unravel down to yo

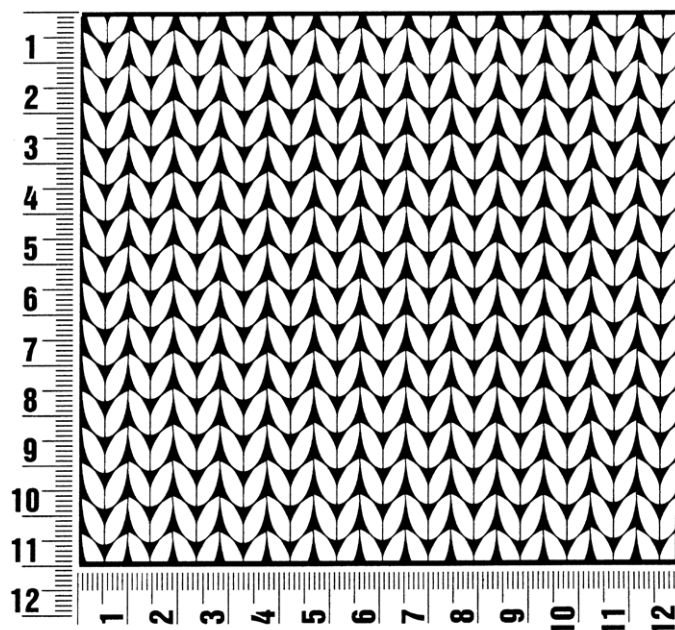
Chart B



Gauge Swatch

Before you begin ...

...make a gauge swatch. Use the recommended needles, yarns and pattern stitch for your gauge swatch. It should measure approx. 12 cm x 12 cm. Cast-on and bind-off rows, as well as selvage stitches should not be included in the measurement. Pin your swatch and block it as you would the finished pieces of the garment. Count stitches and rows over 10 cm. If your gauge swatch is too small, switch to larger needles. If your gauge swatch is too big, switch to smaller needles.



Abbreviations

beg = begin(ning) · **ch** = chain · **cont** = continue · **dec** = decreas(e)(ing) · **inc** = increas(e)(ing) · **k** = knit · **kwise** = as if to knit
meas = measures · **M1L** = lift strand between sts from front to back and knit this strand through the back loop · **M1R** = lift strand between sts from the back and knit this strand through the front loop · **patt** = pattern · **pm** = place marker · **p** = purl
pwise = as if to purl · **rem** = remain(ing) · **rep** = repeat(s) · **rev St st** = reverse stockinette stitch · **rnd(s)** = round(s) · **RS** = right side · **sc** = single crochet · **skp** = slip 1 stitch as if to knit, knit 1 stitch, pass slipped stitch over knitted stitch · **sk2p** = slip 1 stitch as if to knit, knit 2 together, pass slipped stitch over knitted stitch · **s2kp** = slip 2 stitches as if to knit, k 1 stitch, pass slipped stitches over knitted stitch · **sl** = slip · **st(s)** = stitch(es) · **St st** = stockinette stitch · **tbl** = through the back loop · **tog** = together · **wyib** = with yarn in back of work · **wyif** = with yarn in front of work · **WS** = wrong side · **yo(s)** = yarn over(s)

Publisher's Info

Publisher: Lana Grossa GmbH, Gaimersheim, www.lanagrossa.com
Photographer: Nicolas Olonetzky c/o Bascha Kicki Fotografen, www.bascha-photographers.de