



www.lanagrossa.com

TOP · ABOUT BERLIN CHILLY

Design 34 – Filati Journal 59

TOP · ABOUT BERLIN CHILLY

Design 34 – Filati Journal 59



Size 36/38 (40/42, 44/46)

Instructions are given for first size. Figures in parenthesis refer to larger sizes. When only one figure is given, it applies to all sizes.

Materials: 350 (400, 450) g of Lana Grossa **About Berlin Chilly** (100% linen; 95 m/50 g) in Red (col 6). Size 5 mm circular needle, 80 cm long; size 4 mm crochet hook.

Selvage stitches: On every row: Sl first st kwise, k last st.

St st: K on RS, p on WS.

Drop stitch: Make a yo as given in instructions. Work even in St st for the number of rows given in instructions. Drop the stitch created by the yo and unravel st down to row where yo was made.

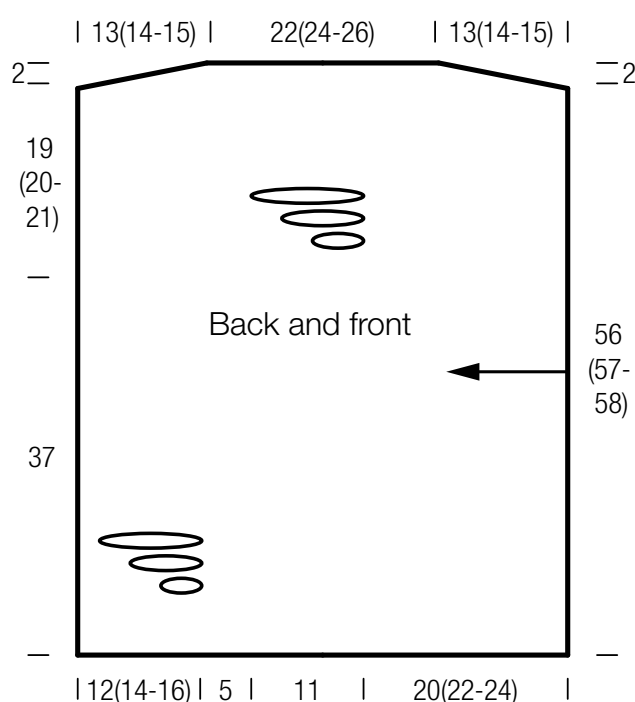
Gauge: 17.5 sts and 27 rows = 10 x 10 cm in St st on size 5 mm needles.

Front: Worked side to side, beginning at left side edge. Arrow on schematic shows direction of work. With size 5 mm circular needle cast on 100 (102, 104) sts. Work in St st and shape shoulder as foll: Inc 1 st at beg of 9th row from cast-on, then every 8th row 3 times = 104 (106, 108) sts. Work even until a total of 36 (38, 40) rows has been worked from cast-on and piece meas 13 (14, 15) cm. Place marker at right edge to indicate end of shoulder/beg of neck. Work even until a total of 54

(60, 64) rows has been worked from cast-on and piece meas 20 (22, 24) cm. Next row (RS): Selvage st, k22, yo (drop st 1), k4, yo (drop st 2), k4, yo (drop st 3), work to end. Work 13 rows even. Next row (RS): Work in St st, unravel drop st 3. Work 7 rows even. Next row (RS): Work in St st, unravel drop st 2. Work 7 rows even. Next row (RS): Work in St st, unravel drop st 1. Work even until a total of 60 (66, 70) rows has been worked from marker and neck meas 22 (24, 26) cm. Place 2nd marker at right edge to indicate end of neck/beg of shoulder. Work even for 2 (4, 6) rows. Shape right shoulder with decs to mirror incs for left shoulder shaping. At same time, after having worked 13 rows = 5 cm after unraveling drop st 1, work another set of drop sts as foll: Next row (RS): Work to last 24 sts, yo (drop st 1), k4, yo (drop st 2), k4, yo (drop st 3), work to end. Work 9 rows even. Next row (RS): Work in St st, unravel drop st 3. Work 7 rows even. Next row (RS): Work in St st, unravel drop st 2. Work 7 rows even. Next row (RS): Work in St st, unravel drop st 1. Work even until a total of 34 (38, 42) rows has been worked from beg of 2nd set of drop sts. Bind off rem 100 (102, 104) sts.

Back: Work same as front, reversing placement of drop sts.

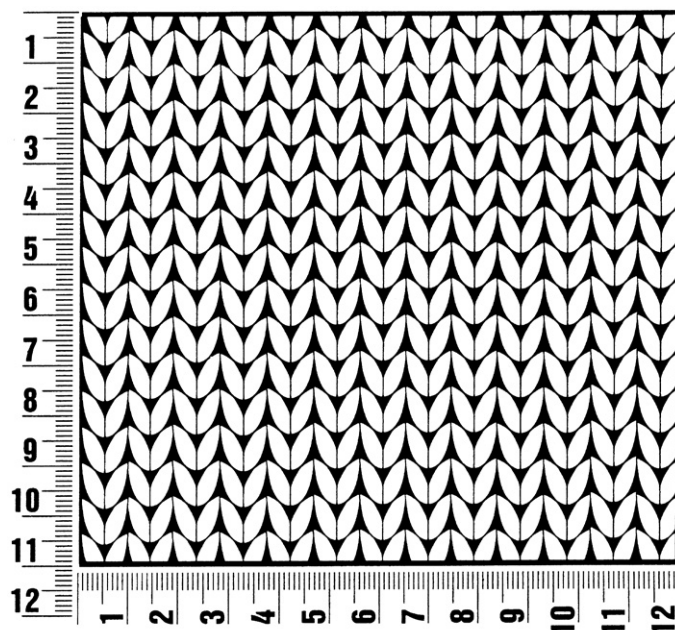
Finishing: Pin pieces to measurements and block. Sew shoulder seams to markers, leaving center 22 (24, 26) cm open for neck. With size 4 mm crochet hook, RS facing and beg at bottom edge, join side seams with sl st over 37 cm, leaving top 19 (20, 21) cm open for armholes. With size 4 mm crochet hook, work 1 rnd sl st around bottom edge of body.



Gauge Swatch

Before you begin ...

...make a gauge swatch. Use the recommended needles, yarns and pattern stitch for your gauge swatch. It should measure approx. 12 cm x 12 cm. Cast-on and bind-off rows, as well as selvage stitches should not be included in the measurement. Pin your swatch and block it as you would the finished pieces of the garment. Count stitches and rows over 10 cm. If your gauge swatch is too small, switch to larger needles. If your gauge swatch is too big, switch to smaller needles.



Abbreviations

beg = begin(ning) · **ch** = chain · **cont** = continue · **dec** = decreas(e)(ing) · **inc** = increas(e)(ing) · **k** = knit · **kwise** = as if to knit
meas = measures · **M1L** = lift strand between sts from front to back and knit this strand through the back loop · **M1R** = lift strand between sts from the back and knit this strand through the front loop · **patt** = pattern · **pm** = place marker · **p** = purl
pwise = as if to purl · **rem** = remain(ing) · **rep** = repeat(s) · **rev St st** = reverse stockinette stitch · **rnd(s)** = round(s) · **RS** = right side · **sc** = single crochet · **skp** = slip 1 stitch as if to knit, knit 1 stitch, pass slipped stitch over knitted stitch · **sk2p** = slip 1 stitch as if to knit, knit 2 together, pass slipped stitch over knitted stitch · **s2kp** = slip 2 stitches as if to knit, k 1 stitch, pass slipped stitches over knitted stitch · **sl** = slip · **st(s)** = stitch(es) · **St st** = stockinette stitch · **tbl** = through the back loop · **tog** = together · **wyib** = with yarn in back of work · **wyif** = with yarn in front of work · **WS** = wrong side · **yo(s)** = yarn over(s)

Publisher's Info

Publisher: Lana Grossa GmbH, Gaimersheim, www.lanagrossa.com
Photographer: Nicolas Olonetzky c/o Bascha Kicki Fotografen, www.bascha-photographers.de