



www.lanagrossa.com

TOP · PIMA

Design 08 – Filati Classici 18

Size 48/50 (52/54, 56)

Instructions are given for first size. Figures in parenthesis refer to larger sizes. When only one figure is given, it applies to all sizes.

Materials: 550 (600, 650) g of Lana Grossa **Pima** (100% Pima cotton; 125 m/50 g) in Khaki (col 16). Size 4 mm needles; cable needle [cn].

Rib patt: K1, p1.

Half-brioche rib: Row 1 (RS): Two-stitch selvage, * p1, k1; rep from * to last 3 sts, p1, two-stitch selvage. Row 2 (WS): Two-stitch selvage, * k1, make a yo, then sl next st pwise; rep from * to last 3 sts, k1, two-stitch selvage. Row 3 (RS): Two-stitch selvage * p1, ktog slipped st with its yo; rep from * to last 3 sts, p1, two-stitch selvage. Work rows 1 – 3 once, then rep rows 2 and 3. **Note:** 1 stitch and 1 yo are treated as 1 stitch.

Two-stitch selvage: On RS row, sl 1 pwise wyib, k1, patt to last 2 sts, k1, sl 1 pwise wyib. On WS row, p1, sl 1 pwise wyif, patt to last 2 sts, sl 1 pwise wyif, p1.

Full-fashion decrease: At beg of RS row, two-stitch selvage, 5 sts in half-brioche rib, skp; at end of RS row, work to last 9 sts, k2tog, 5 sts in half-brioche rib, two-stitch selvage.

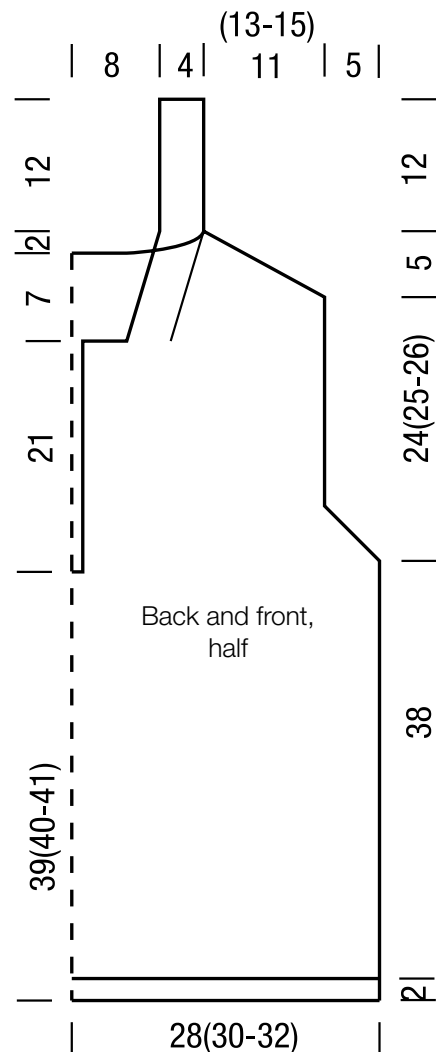
Gauge: 21 sts and 38 rows = 10 x 10 cm in half-brioche rib on size 4 mm needles.

Back: With size 4 mm needles cast on 123 (131, 139) sts. Next row (WS): Two-stitch selvage, k1, * p1, k1; rep from * to last 2 sts, two-stitch selvage. Cont in rib patt as established for 2 more rows. Work in half-brioche rib until piece meas 40 cm from cast-on, ending with a WS row. Shape armholes: Working full-fashion dec, dec 1 st at each end of next 10 RS rows = 103 (111, 119) sts. Work even until armhole meas 24 (25, 26) cm, ending with a WS row. Shape shoulders and neck: At each shoulder edge bind off 2 (3, 3) sts 1 time, then 3 sts 8 times (then 3 sts 5 times, 4 sts 3 times / then 3 sts 1 time, 4 sts 7 times). **At same time,** when piece meas 3 cm from beg of shoulder shaping, shape neck as foll: Next row (RS): Bind off center 41 sts. Working each side separately, bind off 3 sts at each neck edge 1 time, 2 sts 1 time.

Front: Work same as back until piece meas 39 (40, 41) cm from cast-on, ending with a WS row. Divide for V-neck: Next row (RS): Work to 3 sts before center st, sl 3 sts to cn and hold in back of work, bind off 1 st, work next 3 sts, then work 3 sts from cn, work to end of row. Leaving left front sts on hold, work **right front** first as foll: Next row (WS): Patt to last 2 sts, two-stitch selvage. Maintaining selvage sts, cont in patt

until piece meas 21 cm from divide, ending with a WS row. Shape neck: Bind off 8 sts at beg of next RS row, work to end. Working full-fashion dec, dec 1 st [at beg of next 2 RS rows, then every alt RS row 1 time] 2 times, then every foll RS row 2 times. **At same time,** when same length as back to armhole, shape armhole at left edge same as for back and when same length as back to shoulder, shape shoulder at left edge same as for back = 9 sts rem for neckband. Cont across neckband sts for 12 – 13 cm. Bind off all sts. **Left front:** Return held left front sts to needle and with WS facing rejoin yarn. Complete as given for right front, reversing all shaping.

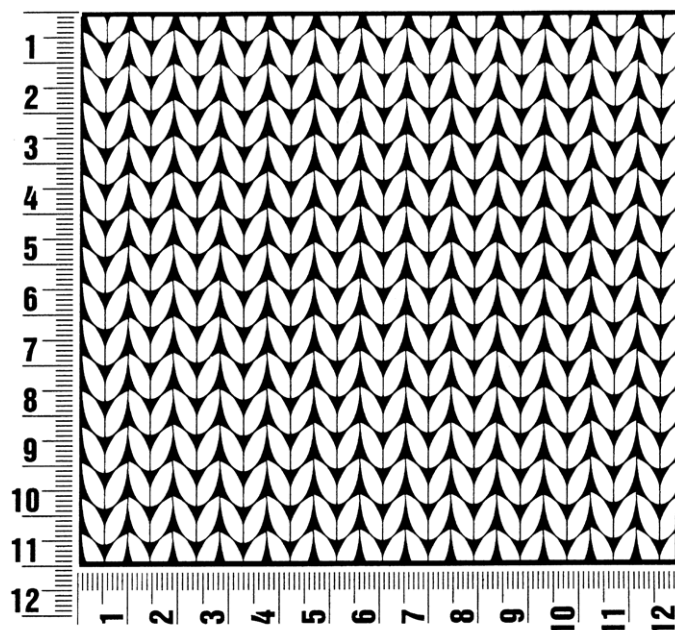
Finishing: Pin pieces to measurements and block. Sew shoulder seams. Sew neckbands tog, then sew neckband to back neck edge. Sew side seams.



Gauge Swatch

Before you begin ...

...make a gauge swatch. Use the recommended needles, yarns and pattern stitch for your gauge swatch. It should measure approx. 12 cm x 12 cm. Cast-on and bind-off rows, as well as selvage stitches should not be included in the measurement. Pin your swatch and block it as you would the finished pieces of the garment. Count stitches and rows over 10 cm. If your gauge swatch is too small, switch to larger needles. If your gauge swatch is too big, switch to smaller needles.



Abbreviations

beg = begin(ning) · **ch** = chain · **cont** = continue · **dec** = decreas(e)(ing) · **inc** = increas(e)(ing) · **k** = knit · **kwise** = as if to knit
meas = measures · **M1L** = lift strand between sts from front to back and knit this strand through the back loop · **M1R** = lift strand between sts from the back and knit this strand through the front loop · **patt** = pattern · **pm** = place marker · **p** = purl
pwise = as if to purl · **rem** = remain(ing) · **rep** = repeat(s) · **rev St st** = reverse stockinette stitch · **rnd(s)** = round(s) · **RS** = right side · **sc** = single crochet · **skp** = slip 1 stitch as if to knit, knit 1 stitch, pass slipped stitch over knitted stitch · **sk2p** = slip 1 stitch as if to knit, knit 2 together, pass slipped stitch over knitted stitch · **s2kp** = slip 2 stitches as if to knit, k 1 stitch, pass slipped stitches over knitted stitch · **sl** = slip · **st(s)** = stitch(es) · **St st** = stockinette stitch · **tbl** = through the back loop · **tog** = together · **wyib** = with yarn in back of work · **wyif** = with yarn in front of work · **WS** = wrong side · **yo(s)** = yarn over(s)

Publisher's Info

Publisher: Lana Grossa GmbH, Gaimersheim, www.lanagrossa.com

Photographer: Wilfried Wulff, www.wilfriedwulff.com