

## **BOLERO · PIMA**

Design 26 – Sommerideen 01

# BOLERO • PIMA

## Design 26 – Sommerideen 01



**Size** 34/36 (38/40)

Instructions are given for smaller size. Figure in parenthesis refers to larger size. When only one figure is given, it applies to both sizes.

**Materials:** 300 (350) g of Lana Grossa **Pima** (100% Pima cotton; 125 m/50 g) in Pale Yellow (**col 12**). Size 4 mm needles; size 3.5 mm crochet hook.

**Lace patt A [back and sleeves]:** Work according to chart A. Numbers at right edge of chart indicate RS rows; on WS rows, work sts as they appear or according to chart key. Work to patt rep, work 5 sts between arrows for patt rep, work to end of chart. Work rows 1 – 10 once, then rep rows 3 – 10.

**Lace patt B [left front]:** Work according to chart B. Numbers at right edge of chart indicate RS rows; on WS rows, work sts as they appear or according to chart key. Position sts as given in instructions.

**St st:** K on RS, p on WS.

**Note:** When working shaping, make sure each yo is paired with a decrease. If there are not enough sts to offset a yo with a decrease or vice versa, work sts in St st instead.

**Gauge:** 19 sts and 26 rows = 10 x 10 cm in lace patt on size 4 mm needles.

**Back:** With size 4 mm needles cast on 73 (83) sts. Work in lace patt A according to chart A until piece meas 14 cm from cast-on, ending with a WS row. Shape sides: Next RS (inc) row: Work in lace patt A, inc 1 st at each end of row = 75 (85) sts. Cont in patt, rep inc row every 6th row 2 times, then every 4th row 2 times = 83 (93) sts. Work even in patt until piece meas 23 (24) cm from cast-on, ending with a WS row. Place marker at each edge to indicate beg of armholes. Work even in patt until piece meas 18 (19.5) cm from armhole markers. Bind off all sts. Mark center 39 sts for neck.

**Left front:** With size 4 mm needles cast on 8 (13) sts. Work in lace patt B according to chart B: **For size 34/36**, work 3 sts before patt rep, then work 5 sts after patt rep. **For size 38/40**, work all sts. **For both sizes:** Cont to foll chart through row 28 = 38 (43) sts are on the needle and piece meas 11 cm from cast-on. Work chart rows 29 – 38, then rep chart rows 31 – 38 and **at same time**, work incs for side shaping at right edge same as for back and when same length as back to armhole,

place marker at right edge to indicate beg of armhole. **At same time**, when piece meas 17 cm from cast-on, shape neck as foll: Bind off 1 st at beg of next 21 WS rows and when same length as back to shoulder, bind off rem 22 (27) shoulder sts.

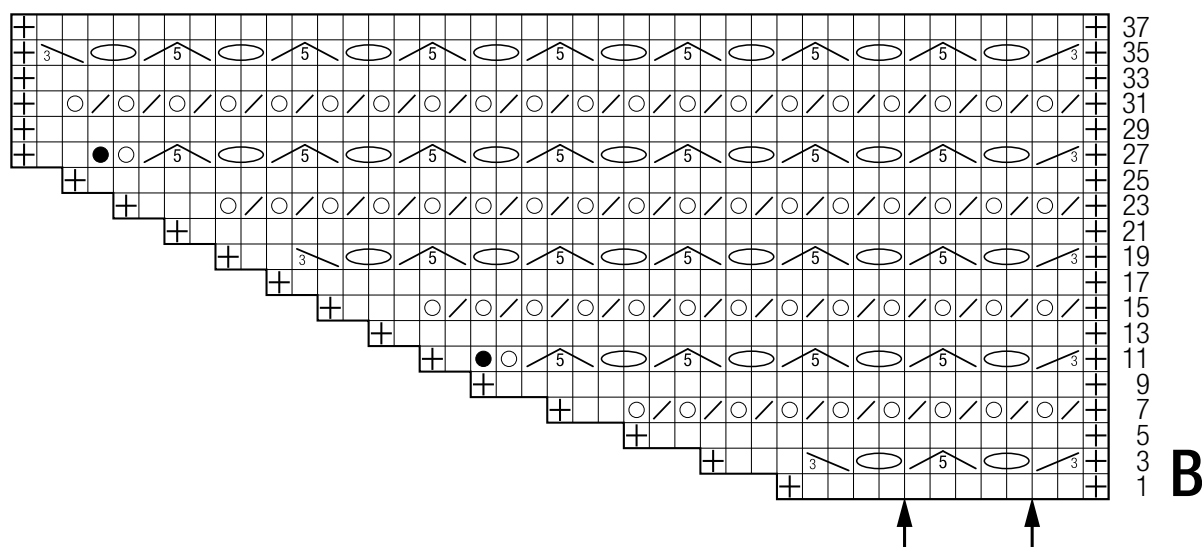
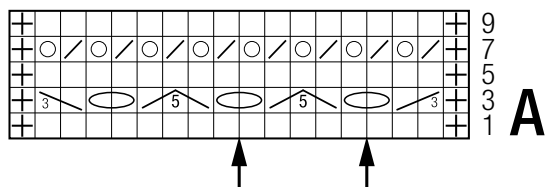
**Right front:** Work same as left front, reversing all shaping and patt placement.

**Sleeves:** With size 4 mm needles cast on 53 (58) sts. Work in lace patt A according to chart A for 30 (32.5) cm, ending with a WS row. Shape sleeve: Next RS (inc) row: Work in lace patt A, inc 1 st at each end of row = 55 (60) sts. Cont in patt, rep inc row every alt RS row 3 times, then every foll RS row 6 times = 73 (78) sts. Work even in patt until piece meas 41 (43.5) cm from cast-on. Bind off all sts.

**Finishing:** Pin pieces to measurements and block. Sew shoulder seams. **Front ties:** Make 2 alike. With size 4 mm needles cast on 43 sts. Work rows 5 – 10 of lace patt chart A, then work rows 3 – 10 once more. Bind off all sts. Sew short edge of ties to left and right front. Sew on sleeves between markers. Sew side and sleeve seams. Work 2 rnds crochet edging around entire edge of bolero and around each sleeve edge: **Rnd 1:** Sl st around, sl st in first sl st to join. **Rnd 2:** Sc in next sl st, \* 1 picot of [ch 3, sc in first ch], sc in next 4 sl st; rep from \*, sl st in first sl st to join. Fasten off.



### Charts A and B



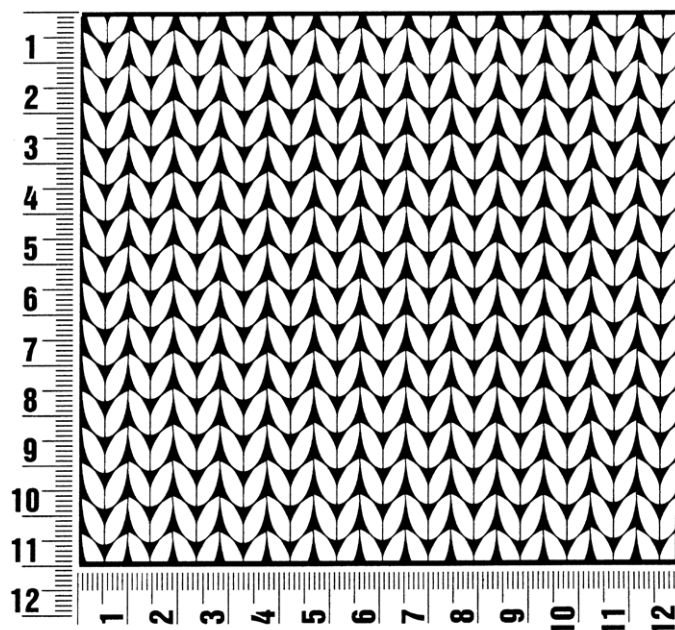
### Chart key:

- = selvage st
- = k1
- = yo on RS, p1 on WS
- = yo on RS, k1 on WS
- = k2tog
- = k3tog
- = k3tog tbl
- = yo twice on RS; on WS, k1&p1 into each yo = 4 sts
- = s3k2p: sl 3 kwise, k2tog, pass slipped sts over knitted st

## Gauge Swatch

### Before you begin ...

...make a gauge swatch. Use the recommended needles, yarns and pattern stitch for your gauge swatch. It should measure approx. 12 cm x 12 cm. Cast-on and bind-off rows, as well as selvage stitches should not be included in the measurement. Pin your swatch and block it as you would the finished pieces of the garment. Count stitches and rows over 10 cm. If your gauge swatch is too small, switch to larger needles. If your gauge swatch is too big, switch to smaller needles.



## Abbreviations

**beg** = begin(ning) · **ch** = chain · **cont** = continue · **dec** = decreas(e)(ing) · **inc** = increas(e)(ing) · **k** = knit · **kwise** = as if to knit  
**meas** = measures · **M1L** = lift strand between sts from front to back and knit this strand through the back loop · **M1R** = lift strand between sts from the back and knit this strand through the front loop · **patt** = pattern · **pm** = place marker · **p** = purl  
**pwise** = as if to purl · **rem** = remain(ing) · **rep** = repeat(s) · **rev St st** = reverse stockinette stitch · **rnd(s)** = round(s) · **RS** = right side · **sc** = single crochet · **skp** = slip 1 stitch as if to knit, knit 1 stitch, pass slipped stitch over knitted stitch · **sk2p** = slip 1 stitch as if to knit, knit 2 together, pass slipped stitch over knitted stitch · **s2kp** = slip 2 stitches as if to knit, k 1 stitch, pass slipped stitches over knitted stitch · **sl** = slip · **st(s)** = stitch(es) · **St st** = stockinette stitch · **tbl** = through the back loop · **tog** = together · **wyib** = with yarn in back of work · **wyif** = with yarn in front of work · **WS** = wrong side · **yo(s)** = yarn over(s)

### Publisher's Info

**Publisher:** Lana Grossa GmbH, Gaimersheim, [www.lanagrossa.com](http://www.lanagrossa.com)

**Photographer:** Herbert Dehn