



www.lanagrossa.com

PONCHO · LACE SETA MULBERRY

Design 22 – Tücher & Co. 04

PONCHO · LACE SETA MULBERRY

Design 22 – Tücher & Co. 04



Size 36 – 40 (42 – 46)

Instructions are given for smaller size. Figure in parenthesis refers to larger size. When only one figure is given, it applies to both sizes.

Materials: 300 (350) g of Lana Grossa **Lace Seta Mulberry** (35% Mulberry silk, 35% baby Alpaca, 30% extrafine Merino wool; 175 m/50 g) in Dark Green (**col 19**). Size 4 mm crochet hook.

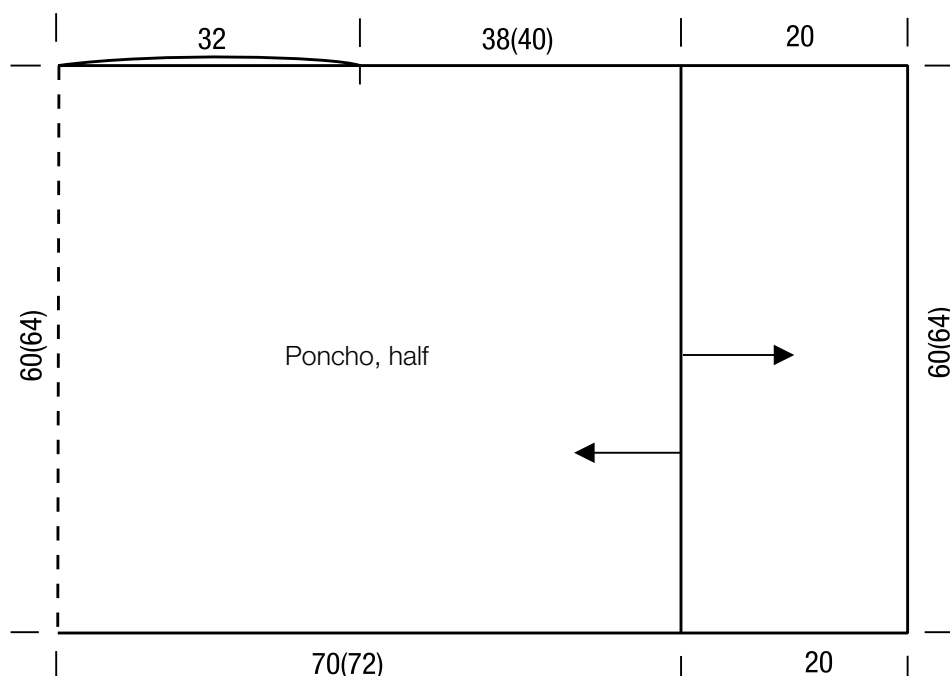
Main patt: Multiple of 12 + 1 + 4. Work according to chart 1. Numbers at right edge of chart indicate RS rows, numbers at left edge of chart indicate WS rows. Work rows 1 – 4 once, then rep rows 3 and 4.

Bobble patt: Multiple of 12 + 1 + 4. Work according to chart 2. Numbers at right edge of chart indicate RS rows, numbers at left edge of chart indicate WS rows. Work rows 1 – 5 once, then rep rows 2 – 5.

Gauges: With size 4 mm hook: 30 sts and 7 rows = 10 x 10 cm in main patt; 30 sts and 6.5 rows = 10 x 10 cm in bobble patt.

Poncho: Ch 181 (193) + ch 4. Work row 1 of main patt chart: Work to patt rep, work 12-st patt rep between arrows 13 (14) times, work to end of chart. Cont to follow chart 1 until piece meas approx. 140 (144) cm from beg, ending with a patt row 4. Work bobble patt according to chart 2 for approx. 20 cm, ending with a patt row 3 or 5. Fasten off. Rotate piece 180 degrees clockwise and crochet in bottom loops of foundation row: Work bobble patt according to chart 2 for approx. 20 cm, ending with a patt row 3 or 5. Fasten off.

Finishing: Pin piece to measurements and block. Fold piece in half, place marker 32 cm from fold line. Beg at marker and ending at top of bobble patt and with WS facing, close seam over 38 (40) cm with sc.



PONCHO · LACE SETA MULBERRY

Design 22 – Tücher & Co. 04



Chart 1

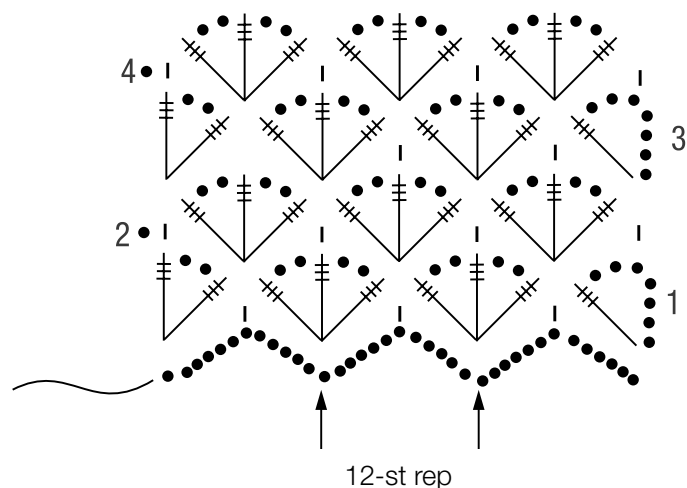
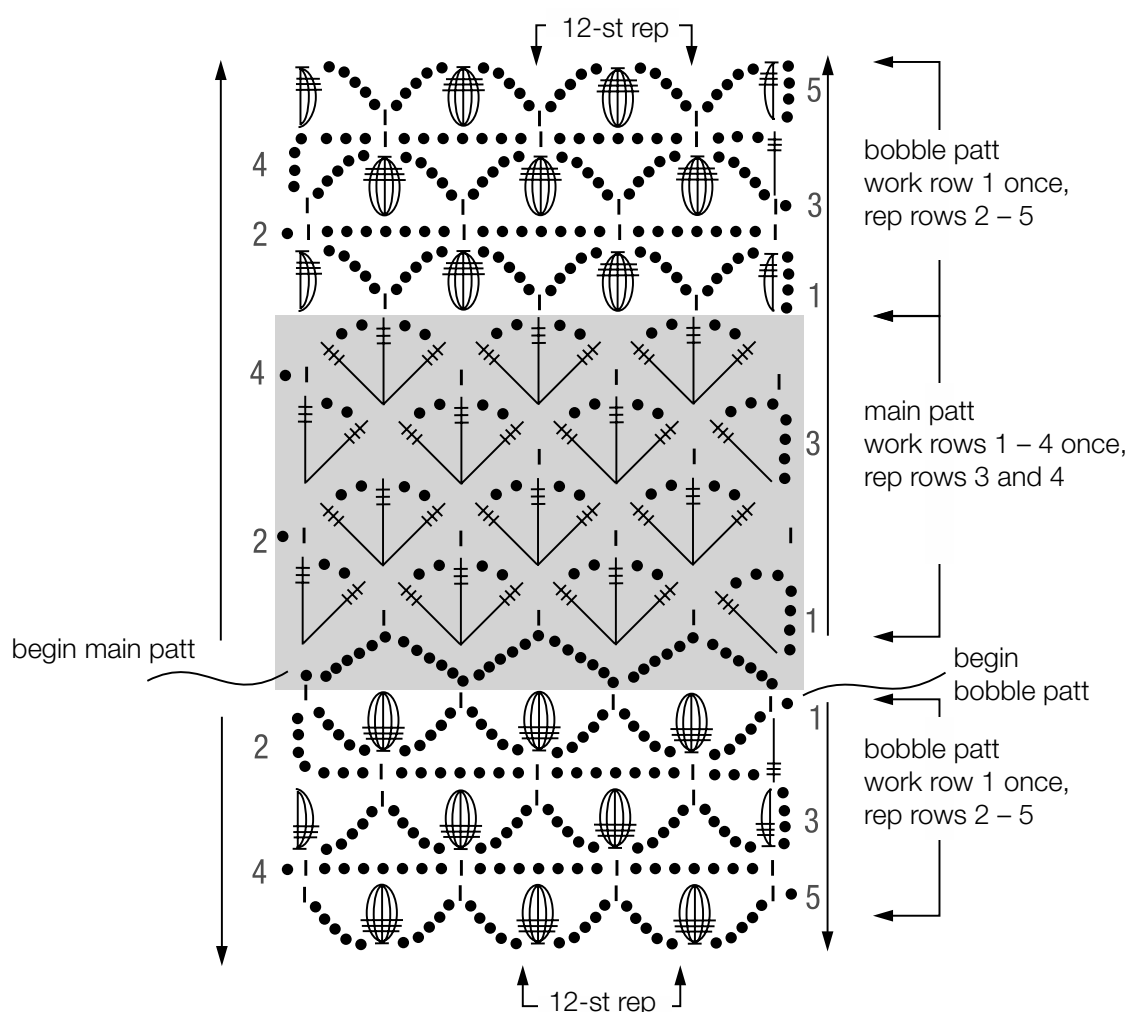


Chart key:

- = chain (ch)
- | = single crochet (sc)
- ≡ = double treble crochet (dtr)
- ⊗ = dtr5tog in same st
- ⊗ = dtr3tog in same st
- ⊗ = dtr2tog in same st

sts that meet at the bottom are all worked in one st

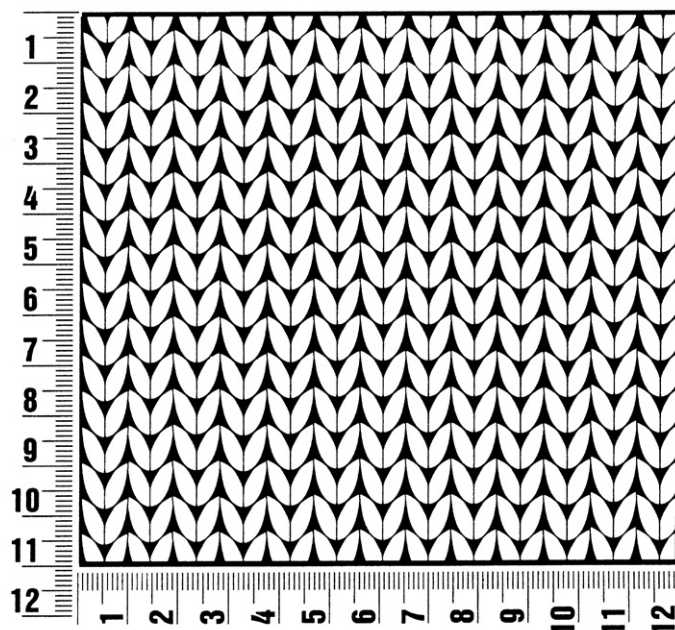
Chart 2



Gauge Swatch

Before you begin ...

...make a gauge swatch. Use the recommended needles, yarns and pattern stitch for your gauge swatch. It should measure approx. 12 cm x 12 cm. Cast-on and bind-off rows, as well as selvage stitches should not be included in the measurement. Pin your swatch and block it as you would the finished pieces of the garment. Count stitches and rows over 10 cm. If your gauge swatch is too small, switch to larger needles. If your gauge swatch is too big, switch to smaller needles.



Abbreviations

beg = begin(ning) · **ch** = chain · **cont** = continue · **dec** = decreas(e)(ing) · **inc** = increas(e)(ing) · **k** = knit · **kwise** = as if to knit
meas = measures · **M1L** = lift strand between sts from front to back and knit this strand through the back loop · **M1R** = lift strand between sts from the back and knit this strand through the front loop · **patt** = pattern · **pm** = place marker · **p** = purl
pwise = as if to purl · **rem** = remain(ing) · **rep** = repeat(s) · **rev St st** = reverse stockinette stitch · **rnd(s)** = round(s) · **RS** = right side · **sc** = single crochet · **skp** = slip 1 stitch as if to knit, knit 1 stitch, pass slipped stitch over knitted stitch · **sk2p** = slip 1 stitch as if to knit, knit 2 together, pass slipped stitch over knitted stitch · **s2kp** = slip 2 stitches as if to knit, k 1 stitch, pass slipped stitches over knitted stitch · **sl** = slip · **st(s)** = stitch(es) · **St st** = stockinette stitch · **tbl** = through the back loop · **tog** = together · **wyib** = with yarn in back of work · **wyif** = with yarn in front of work · **WS** = wrong side · **yo(s)** = yarn over(s)

Publisher's Info

Publisher: Lana Grossa GmbH, Gaimersheim, www.lanagrossa.com

Photographer: Wilfried Wulff, www.wilfriedwulff.com