



www.lanagrossa.com

**JACKET · SILKHAIR HAND-DYED &
SILKHAIR**

Design 01 – Hand-dyed 01

JACKET · SILKHAIR HAND-DYED & SILKHAIR

Design 01 – Hand-dyed 01



Size 36 – 40 (42/44, 46/48)

Instructions are given for first size. Figures in parenthesis refer to larger sizes. When only one figure is given, it applies to all sizes.

Materials: 100 (150, 150) g of Lana Grossa **Silkhair hand-dyed** (70% superkid mohair, 30% silk; 400 m/50 g) in Blue/Mint/Pale Green/Light Grey/Pink/Grey (**col 602**) and 75 (100, 125) g of Lana Grossa **Silkhair** (70% superkid mohair, 30% silk; 210 m/25 g) in Gentian Blue (**col 133**). Size 5 mm needles.

St st: K on RS, p on WS.

Rev St st: P on RS, k on WS.

Garter st: K every row.

Selvage sts: On every row: Knit first and last st.

Stripe sequence: 2 rows Blue/Mint/Pale Green/Light Grey/Pink/Grey, 10 rows Gentian Blue, 4 rows Blue/Mint/Pale Green/Light Grey/Pink/Grey, 8 rows Gentian Blue, 6 rows Blue/Mint/Pale Green/Light Grey/Pink/Grey, 6 rows Gentian Blue, 8 rows Blue/Mint/Pale Green/Light Grey/Pink/Grey, 4 rows Gentian Blue, 10 rows Blue/Mint/Pale Green/Light Grey/Pink/Grey, 2 rows Gentian Blue = 60 rows.

Gauge: 17 sts and 27 rows = 10 x 10 cm in St st on size 5 mm needles.

Back: With size 5 mm needles and Gentian Blue loosely cast on 100 (108, 116) sts. Beg and end with a WS row, work in garter st for 3 rows. Working first and last st as selvage sts, work in St st until piece meas 26 cm from cast-on, ending with a WS row. Cont in St st and work stripe sequence for 60 rows. Work remainder of back in St st with Blue/Mint/Pale Green/Light Grey/Pink/Grey only and when piece meas 73 (74, 75) cm from cast-on, shape shoulders as foll: Bind off 5 (6, 6) sts at beg of next 2 rows, then 5 sts at beg of next 6 rows, 6 sts at beg of next 6 rows (then 6 sts at beg of next 12 rows / then 6 sts at beg of next 4 rows, 7 sts at beg of next 8 rows). Bind off rem 24 sts.

Left front: With size 5 mm needles and Gentian Blue loosely cast on 82 (86, 90) sts. Beg and end with a WS row, work in garter st for 3 rows. Next row (RS): Selvage st, work next 46 (50, 54) sts in St st, work next 34 sts in rev St st, selvage st. Work in patt as set by last row until piece meas 26 cm from cast-on, ending with a WS row. Cont in patt and work stripe sequence for 60 rows. Work remainder of left front in patt as established with Blue/Mint/Pale Green/Light Grey/Pink/Grey

only. At same time, when piece meas 46 (47, 48) cm from cast-on, shape neck as foll: Next RS (dec) row: Work to 3 sts before rev St st section, skp, 1 st in St st, 34 sts in rev St st, selvage st. Rep dec row every 10th row 6 times, then every 8th row 2 times = 9 sts decreased and at same time, when same length as back to shoulder, shape shoulder as foll: At beg of RS rows, bind off 5 (6, 6) sts 1 time, then 5 sts 3 times, 6 sts 3 times (then 6 sts 6 times / then 6 sts 2 times, 7 sts 4 times). Work to end of last RS row = 35 sts rem for collar. Next row (WS): Patt over 35 sts, backloop cast on 1 st (selvage st for seaming) = 36 sts. Work even in rev St st until collar meas 8 cm from last shoulder bind-off row, ending with a WS row. Bind off all sts.

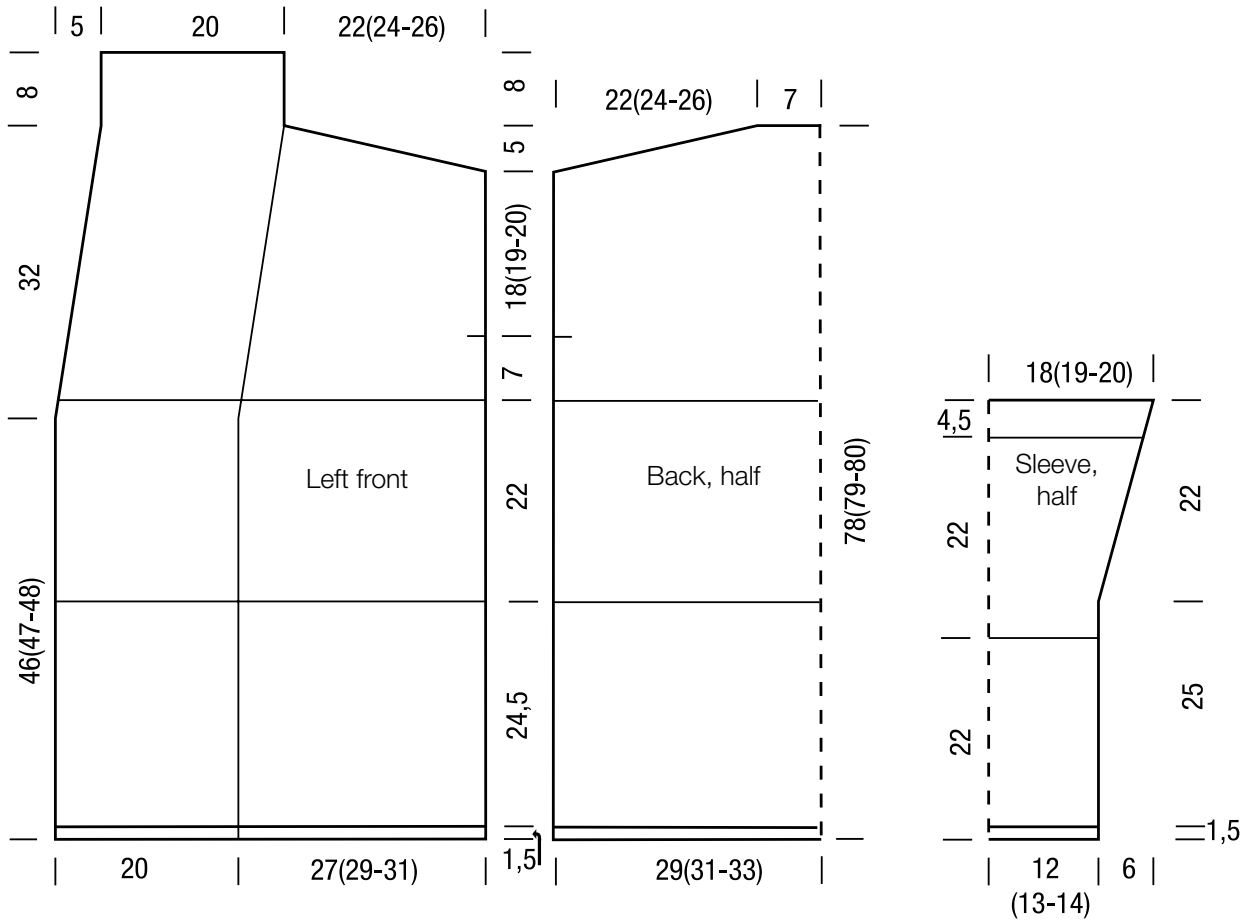
Right front: Work same as left front, reversing all shaping and patt placement and working decs for neck shaping on RS rows as foll: Selvage st, 34 sts in rev St st, 1 st in St st, k2tog, work to end.

Sleeves: With size 5 mm needles and Gentian Blue loosely cast on 42 (46, 50) sts. Beg and end with a WS row, work in garter st for 3 rows. Working first and last st as selvage sts, work in St st until piece meas 22 cm from cast-on, ending with a WS row. Cont in St st and work stripe sequence for 60 rows. Work remainder of sleeve in St st with Blue/Mint/Pale Green/Light Grey/Pink/Grey only. At same time, when piece meas 26.5 cm from cast-on, shape sleeve as foll: Inc 1 st at each end of next RS row, then every 6th row 9 times = 62 (66, 70) sts. Work even until piece meas 48.5 cm from cast-on. Loosely bind off all sts.

Finishing: Sew shoulder seams. Sew collar seam, sewing top 5 cm from WS for the turnback of the collar to the RS. Sew collar edge to back neck. Place markers 18 (19, 20) cm down from shoulders on front and back. Sew on sleeves between markers. Sew side and sleeve seams.

JACKET · SILKHAIR HAND-DYED & SILKHAIR

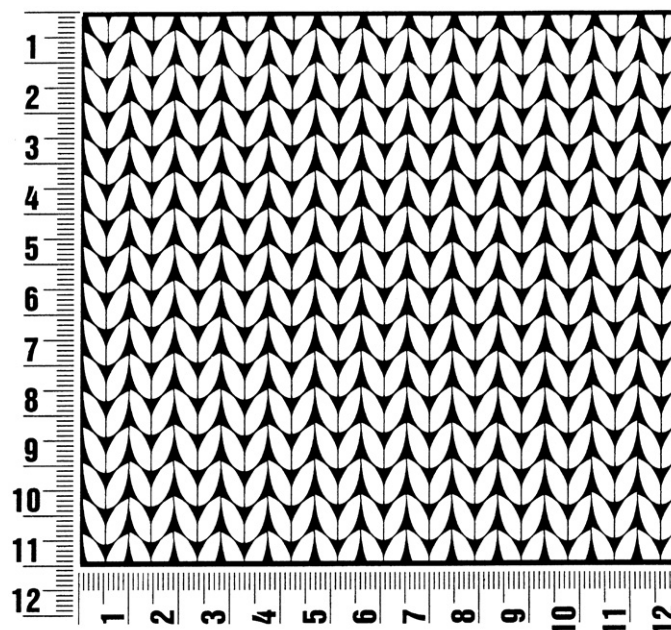
Design 01 – Hand-dyed 01



Gauge Swatch

Before you begin ...

...make a gauge swatch. Use the recommended needles, yarns and pattern stitch for your gauge swatch. It should measure approx. 12 cm x 12 cm. Cast-on and bind-off rows, as well as selvage stitches should not be included in the measurement. Pin your swatch and block it as you would the finished pieces of the garment. Count stitches and rows over 10 cm. If your gauge swatch is too small, switch to larger needles. If your gauge swatch is too big, switch to smaller needles.



Abbreviations

beg = begin(ning) · **ch** = chain · **cont** = continue · **dec** = decreas(e)(ing) · **inc** = increas(e)(ing) · **k** = knit · **kwise** = as if to knit
meas = measures · **M1L** = lift strand between sts from front to back and knit this strand through the back loop · **M1R** = lift strand between sts from the back and knit this strand through the front loop · **patt** = pattern · **pm** = place marker · **p** = purl
pwise = as if to purl · **rem** = remain(ing) · **rep** = repeat(s) · **rev St st** = reverse stockinette stitch · **rnd(s)** = round(s) · **RS** = right side · **sc** = single crochet · **skp** = slip 1 stitch as if to knit, knit 1 stitch, pass slipped stitch over knitted stitch · **sk2p** = slip 1 stitch as if to knit, knit 2 together, pass slipped stitch over knitted stitch · **s2kp** = slip 2 stitches as if to knit, k 1 stitch, pass slipped stitches over knitted stitch · **sl** = slip · **st(s)** = stitch(es) · **St st** = stockinette stitch · **tbl** = through the back loop · **tog** = together · **wyib** = with yarn in back of work · **wyif** = with yarn in front of work · **WS** = wrong side · **yo(s)** = yarn over(s)

Publisher's Info

Publisher: Lana Grossa GmbH, Gaimersheim, www.lanagrossa.com

Photographer: Wilfried Wulff, www.wilfriedwulff.com