



www.lanagrossa.com

**JACKET · COOL WOOL BIG OR
COOL WOOL BIG HAND-DYED**

Design 09 – Hand-dyed 01

JACKET · COOL WOOL BIG OR COOL WOOL BIG HAND-DYED

Design 09 – Hand-dyed 01



Size 36/38 (40/42, 44)

Instructions are given for first size. Figures in parenthesis refer to larger sizes. When only one figure is given, it applies to all sizes.

Materials: **650 (700, 750) g** of Lana Grossa **Cool Wool Big** (100% pure wool; 120 m/50 g) in Rosewood (**col 953**) or **700 (700, 800) g** of Lana Grossa **Cool Wool Big hand-dyed** (100% pure wool; 240 m/100 g) in Red/Terracotta/Pink/Cyclamen/Chocolate Brown/Antique Pink (**col 201**). Size 3.5 and 4.5 mm needles.

Rib patt: K1, p1.

Slip stitch patt 1 [back and fronts]: Work according to chart 1. Multiple of 10 + 9 + 2 selvage sts (not shown on chart). Number at right edge of chart indicates RS row, number at left edge of chart indicates WS row. Rep rows 1 and 2.

Slip stitch patt 2 [sleeves]: Work according to chart 2. Multiple of 4 + 3 + 2 selvage sts (not shown on chart). Number at right edge of chart indicates RS row, number at left edge of chart indicates WS row. Rep rows 1 and 2.

Three-stitch selvage: On RS row, sl 1 pwise wyib, k2, patt to last 3 sts, k2, sl 1 pwise wyib. On WS row, p1, sl 2 pwise wyif, patt to last 3 sts, sl 2 pwise wyif, p1.

Gauges: On size 4.5 mm needles: 21 sts and 31 rows = 10 x 10 cm in slip st patt 1; 22 sts and 31 rows = 10 x 10 cm in slip st patt 2.

Back: With size 3.5 mm needles and Cool Wool Big or Cool Wool Big hand-dyed cast on 121 (129, 137) sts. Next row (WS): Selvage st (k on RS, p on WS), p1, * k1, p1; rep from * to last st, selvage st (k on RS, p on WS). Cont in rib patt as established until piece meas 5 cm from cast-on, ending with a WS row. Change to size 4.5 mm needles. Next row (RS): Selvage st, work row 1 of slip st patt chart 1 over next 119 (127, 135) sts as foll: Work 10-st patt rep between arrows 11 times, work to end of chart (work last 4 chart sts, then work 10-st patt rep between arrows 12 times, then work first 3 sts of patt rep once more / work last 8 chart sts, then work 10-st patt rep between arrows 12 times, then work first 7 sts of patt rep once more); selvage st. Cont to follow chart 1 until piece meas 58 (59, 60) cm from cast-on, ending with a WS row. Shape shoulders: Bind off 7 (7, 8) sts at beg of next 2 rows, then 7 sts at beg of next 10 rows (then 7 sts at beg of next 2 rows, 8 sts at beg of next 8 rows / then 8 sts at beg of next 6 rows, 9 sts at beg of next 4 rows). Bind off rem 37 sts.

Left front: With size 3.5 mm needles and Cool Wool Big or Cool Wool Big hand-dyed cast on 70 (74, 78) sts. Next row (WS): Three-st selvage, p1, * k1, p1; rep from * to last 2 sts, k1, selvage st (k on RS, p on WS). Cont in rib patt as established until piece meas 5 cm from cast-on, ending with a WS row. Change to size 4.5 mm needles. Next row (RS): Selvage st, work row 1 of slip st patt chart 1 over next 59 (63, 67) sts as foll: Work 10-st patt rep between arrows 5 times, work to end of chart (work last 4 chart sts, then work 10-st patt rep between arrows 5 times, work to end of chart / work last 8 chart sts, then work 10-st patt rep between arrows 5 times, work to end of chart), work 7 sts in rib patt as established, three-st selvage. Cont in patt as established until piece meas 58 (59, 60) cm from cast-on, ending with a WS row. Shape shoulder: At beg of RS rows, bind off 7 (7, 8) sts 1 time, then 7 sts 5 times (then 7 sts 1 time, 8 sts 4 times / then 8 sts 3 times, 9 sts 2 times), patt to end of row = 28 sts rem for collar. Next row (WS): Patt over 28 sts, backloop cast on 1 st [selvage st for seaming; k on RS, p on WS] = 29 sts. Cont in patt until collar meas 11 cm from last shoulder bind-off, ending with a WS row. Place sts on holder.

Right front: Work same as left front, reversing all shaping and patt placement.

Sleeves: With size 3.5 mm needles and Cool Wool Big or Cool Wool Big hand-dyed cast on 61 sts. Next row (WS): Selvage st (k on RS, p on WS), * k1, p1; rep from * to last 2 sts, k1, selvage st (k on RS, p on WS). Cont in rib patt as established until piece meas 5 cm from cast-on, ending with a WS row. Change to size 4.5 mm needles. Next row (RS): Selvage st, work row 1 of slip st patt chart 2 over next 59 sts as foll: Work 4-st patt rep between arrows 14 times, work to end of chart = 3 sts; selvage st. Cont to follow chart 2 and shape sleeve as foll: Inc 1 st at each end of 11(11, 9)th row, then every 10th row 10 times, then every 8th row 2 times (then every 10th row 2 times, then every 8th row 12 times / then every 8th row 12 times, then every 6th row 4 times) = 87 (91, 95) sts. Work increased sts into patt. Work even until piece meas 48 cm from cast-on. Bind off all sts.

Finishing: Pin pieces to measurements and block. Sew shoulder seams. With right sides tog, join collar sts with 3-needle bind-off. Sew collar to back neck edge. Place markers 19 (20, 21) cm down from shoulders on front and back. Sew on sleeves between markers. Sew side and sleeve seams.

JACKET · COOL WOOL BIG OR COOL WOOL BIG HAND-DYED

Design 09 – Hand-dyed 01



Chart 1

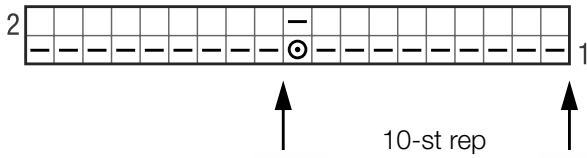


Chart 2

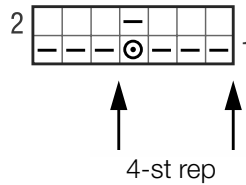
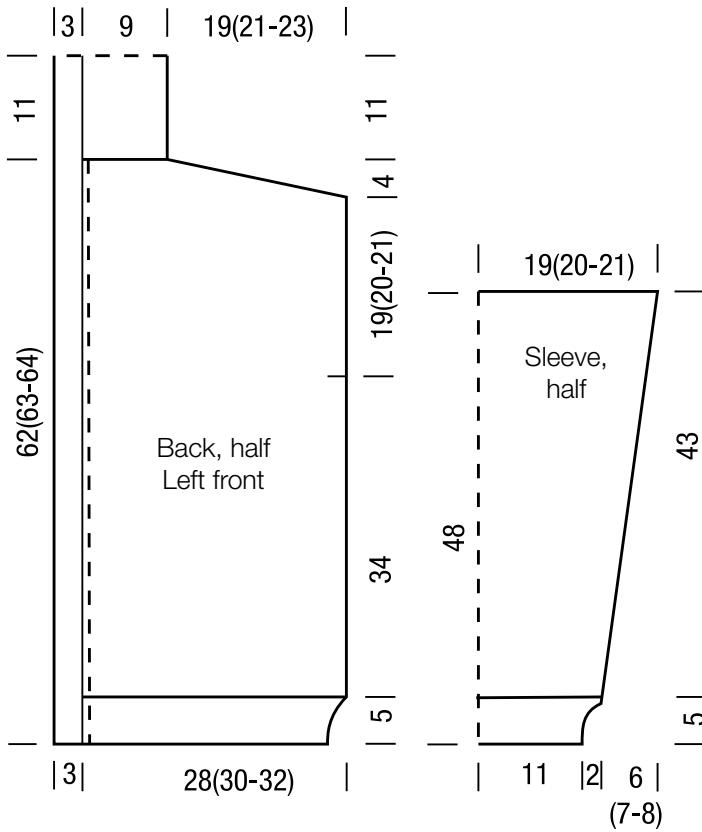


Chart key:

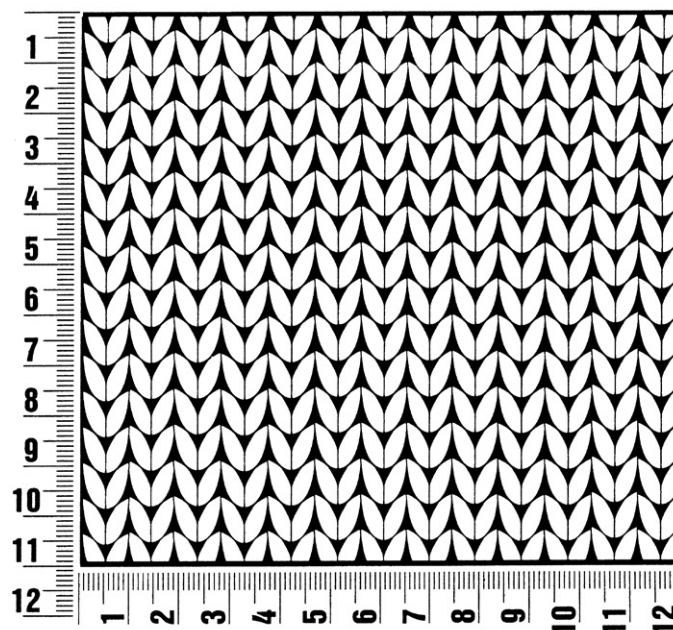
- = k1
- ▢ = p1
- ⊙ = sl 1pwise wyib



Gauge Swatch

Before you begin ...

...make a gauge swatch. Use the recommended needles, yarns and pattern stitch for your gauge swatch. It should measure approx. 12 cm x 12 cm. Cast-on and bind-off rows, as well as selvage stitches should not be included in the measurement. Pin your swatch and block it as you would the finished pieces of the garment. Count stitches and rows over 10 cm. If your gauge swatch is too small, switch to larger needles. If your gauge swatch is too big, switch to smaller needles.



Abbreviations

beg = begin(ning) · **ch** = chain · **cont** = continue · **dec** = decreas(e)(ing) · **inc** = increas(e)(ing) · **k** = knit · **kwise** = as if to knit
meas = measures · **M1L** = lift strand between sts from front to back and knit this strand through the back loop · **M1R** = lift strand between sts from the back and knit this strand through the front loop · **patt** = pattern · **pm** = place marker · **p** = purl
pwise = as if to purl · **rem** = remain(ing) · **rep** = repeat(s) · **rev St st** = reverse stockinette stitch · **rnd(s)** = round(s) · **RS** = right side · **sc** = single crochet · **skp** = slip 1 stitch as if to knit, knit 1 stitch, pass slipped stitch over knitted stitch · **sk2p** = slip 1 stitch as if to knit, knit 2 together, pass slipped stitch over knitted stitch · **s2kp** = slip 2 stitches as if to knit, k 1 stitch, pass slipped stitches over knitted stitch · **sl** = slip · **st(s)** = stitch(es) · **St st** = stockinette stitch · **tbl** = through the back loop · **tog** = together · **wyib** = with yarn in back of work · **wyif** = with yarn in front of work · **WS** = wrong side · **yo(s)** = yarn over(s)

Publisher's Info

Publisher: Lana Grossa GmbH, Gaimersheim, www.lanagrossa.com

Photographer: Wilfried Wulff, www.wilfriedwulff.com