



[www.lanagrossa.com](http://www.lanagrossa.com)

**JACKET · COOL WOOL OR  
COOL WOOL HAND-DYED**  
Design 10 – Hand-dyed 01

# JACKET · COOL WOOL OR COOL WOOL HAND-DYED

## Design 10 – Hand-dyed 01



**Size** 36/38 (40/42, 44)

Instructions are given for first size. Figures in parenthesis refer to larger sizes. When only one figure is given, it applies to all sizes.

**Materials:** 450 (500, 550) g of Lana Grossa **Cool Wool** (100% pure wool; 160 m/50 g) in Orange Red (col 2066) or 500 (500, 600) g of Lana Grossa **Cool Wool hand-dyed** (100% pure wool; 320 m/100 g) in Rust/Orange/Off White/Yellow/Pink/Green (col 101). Size 4.5 mm needles; size 4 mm circular needle, 40 cm long; size 3.5 mm crochet hook; seven 18 mm buttons [by UNION KNOFF, item 37604, col 12].

**Seed st:** Even number of sts. **Row 1:** Selvage st, \* k1, p1; rep from \*, end selvage st. **Row 2:** Selvage st, purl the knit sts and knit the purl sts, selvage st. Rep row 2 for seed st.

**St st:** K on RS, p on WS.

**Slip stitch patt:** Work according to chart. Multiple of 2 + 1 + 2 selvage sts (not shown on chart). Numbers at right edge of chart indicate RS rows, numbers at left edge of chart indicate WS rows. Work rows 1 – 10 once.

**Main patt:** 16 rows in St st, 10 rows in slip st patt = 26 rows. Rep these 26 rows throughout.

**Selvage sts:** On every row: Knit first and last st.

**Gauge:** 21 sts and 30 rows = 10 x 10 cm in St st on size 4.5 mm needles.

**Back:** With size 4.5 mm needles and Cool Wool or Cool Wool hand-dyed cast on 104 (112, 120) sts. Beg and end with a WS row and working first and last st as selvage sts, work in seed st for 7 rows. Next row (RS): Maintaining selvage sts, work in main patt, increasing 1 st at center of row = 105 (113, 121) sts. Cont in main patt until piece meas 29 cm from cast-on, ending with a WS row. Shape armholes: Bind off 3 sts at beg of next 2 rows, 2 sts at beg of next 4 (4, 6) rows, 1 st at beg of next 2 (6, 6) rows = 89 (93, 97) sts. Cont in main patt until piece meas 48.5 (49.5, 50.5) cm from cast-on, ending with a WS row. Shape neck: Next row (RS): Bind off center 27 sts. Working each side separately, bind off 4 sts at each neck edge 1 time and when piece meas 1.5 cm from beg of neck shaping, bind off rem 27 (29, 31) sts for each shoulder.

**Left front:** With size 4.5 mm needles and Cool Wool or Cool Wool hand-dyed cast on 54 (58, 62) sts. Beg and end with a WS row and working first and last st as selvage sts, work in seed st for 7 rows. Next row (RS): Selvage st, work next 47 (51, 55) sts in main patt, work next 5 sts in seed st as established, selvage st. Cont in patt as set by last row until piece meas 29 cm from cast-on, ending with a WS row. Shape armhole: At beg of RS rows, bind off 3 sts 1 time, 2 sts 2 (2, 3) times, 1 st 1 (3, 3) time(s) = 46 (48, 50) sts. Cont in main patt until piece meas 44 (45, 46) cm from cast-on, ending with a RS row. Shape neck: At beg of WS rows, bind off 10 sts 1 time, 3 sts 2 times, 2 sts 1 time, 1 st 1 time = 27 (29, 31) sts and when same length as back to shoulder, bind off rem 27 (29, 31) shoulder sts.

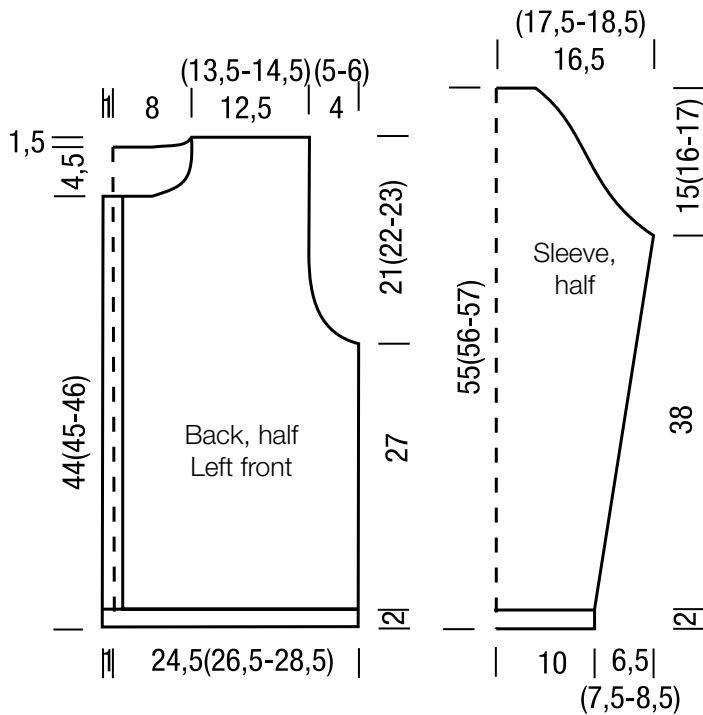
**Right front:** Work same as left front, reversing all shaping and patt placement and working 7 buttonholes at beg of RS rows as foll: Selvage st, p2tog or k2tog as needed to maintain seed st, yo, work to end. On foll WS row, work yo into seed st. Work first buttonhole when piece meas 5 (5, 6) cm from cast-on and rem 6 buttonholes spaced 6 (6.5, 6.5) cm apart.

**Sleeves:** With size 4.5 mm needles and Cool Wool or Cool Wool hand-dyed cast on 42 sts. Beg and end with a WS row and working first and last st as selvage sts, work in seed st for 7 rows. Next row (RS): Maintaining selvage sts, work in main patt, increasing 1 st at center of row = 43 sts. Cont in main patt and shape sleeve as foll: Inc 1 st at each end of 9 (9, 7)th row worked in main patt, then every 8th row 11 times, then every 6th row 2 times (then every alt 6th and 8th row 10 times, then every 6th row 5 times / then every 6th row 17 times) = 71 (75, 79) sts. Work increased sts into patt. Cont in main patt until piece meas 40 cm from cast-on, ending with a WS row. Shape sleeve cap: Bind off 3 sts at beg of next 2 rows, 2 sts at beg of next 4 rows, 1 st at beg of next 14 (16, 18) rows, [work 2 rows even, bind off 1 st at beg of next 2 rows] 2 times, then bind off 1 st at beg of next 12 (14, 16) rows, 2 sts at beg of next 2 rows, 3 sts at beg of next 2 rows. Bind off rem 17 sts.

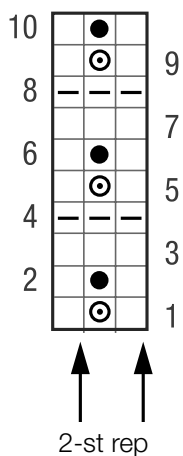
**Finishing:** Pin pieces to measurements and block. Sew shoulder seams. **Neckband:** With size 4 mm circular needle, pick up and k 83 sts evenly along right front, back and left front neck edge. Work in seed st for 6 rows. Bind off all sts in patt. With size 3.5 mm hook, sc along right and left front edge. Sew in sleeves. Sew side and sleeve seams. Sew on buttons.

# JACKET · COOL WOOL OR COOL WOOL HAND-DYED

## Design 10 – Hand-dyed 01



### Chart



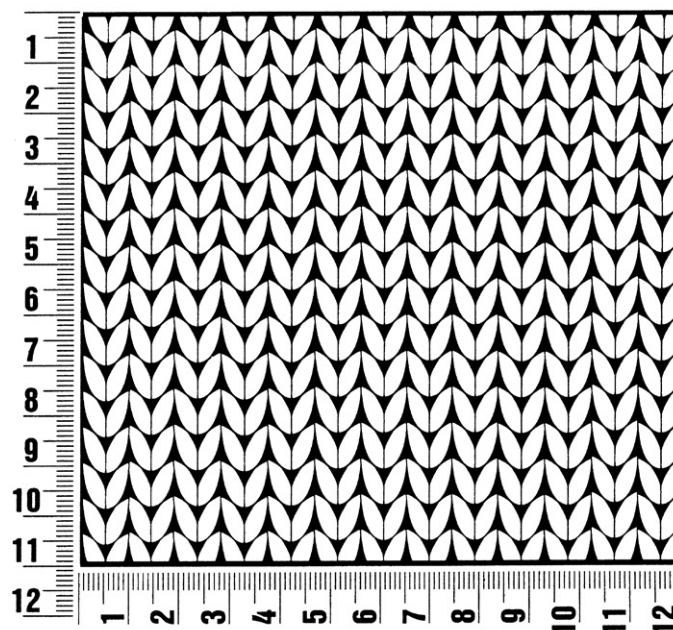
### Chart key:

- = k1
- = p1
- ⊙ = sl 1 pwise wyib
- = sl 1 pwise wyif

## Gauge Swatch

### Before you begin ...

...make a gauge swatch. Use the recommended needles, yarns and pattern stitch for your gauge swatch. It should measure approx. 12 cm x 12 cm. Cast-on and bind-off rows, as well as selvage stitches should not be included in the measurement. Pin your swatch and block it as you would the finished pieces of the garment. Count stitches and rows over 10 cm. If your gauge swatch is too small, switch to larger needles. If your gauge swatch is too big, switch to smaller needles.



## Abbreviations

**beg** = begin(ning) · **ch** = chain · **cont** = continue · **dec** = decreas(e)(ing) · **inc** = increas(e)(ing) · **k** = knit · **kwise** = as if to knit  
**meas** = measures · **M1L** = lift strand between sts from front to back and knit this strand through the back loop · **M1R** = lift strand between sts from the back and knit this strand through the front loop · **patt** = pattern · **pm** = place marker · **p** = purl  
**pwise** = as if to purl · **rem** = remain(ing) · **rep** = repeat(s) · **rev St st** = reverse stockinette stitch · **rnd(s)** = round(s) · **RS** = right side · **sc** = single crochet · **skp** = slip 1 stitch as if to knit, knit 1 stitch, pass slipped stitch over knitted stitch · **sk2p** = slip 1 stitch as if to knit, knit 2 together, pass slipped stitch over knitted stitch · **s2kp** = slip 2 stitches as if to knit, k 1 stitch, pass slipped stitches over knitted stitch · **sl** = slip · **st(s)** = stitch(es) · **St st** = stockinette stitch · **tbl** = through the back loop · **tog** = together · **wyib** = with yarn in back of work · **wyif** = with yarn in front of work · **WS** = wrong side · **yo(s)** = yarn over(s)

### Publisher's Info

**Publisher:** Lana Grossa GmbH, Gaimersheim, [www.lanagrossa.com](http://www.lanagrossa.com)

**Photographer:** Wilfried Wulff, [www.wilfriedwulff.com](http://www.wilfriedwulff.com)