



www.lanagrossa.com

**PULLOVER · SILKHAIR OR
SILKHAIR HAND-DYED**

Design 11 – Hand-dyed 01

PULLOVER · SILKHAIR OR SILKHAIR HAND-DYED

Design 11 – Hand-dyed 01



Size 36 (38/40, 42)

Instructions are given for first size. Figures in parenthesis refer to larger sizes. When only one figure is given, it applies to all sizes.

Materials: VERSION 1: **100 (100, 200) g** of Lana Grossa **Silkhair hand-dyed** (70% superkid mohair, 30% silk; 400 m/50 g) in Lime/White Green/Olive/Jade/Turquoise/Vanilla/Yellow/Petrol/Pink/Terracotta/Beige (**col 606**) and **50 (50, 100) g** in Pink/Blush/Pale Green/Grey Brown/Lagoon/Turquoise (**col 604**). VERSION 2: **125 (150, 150) g** of Lana Grossa **Silkhair** (70% superkid mohair, 30% silk; 210 m/25 g) in Turquoise (**col 143**). Size 4.5 and 5 mm needles; size 5 mm circular needle, 40 cm long.

Rib patt: P2, k2.

Main patt: Work according to chart. Multiple of 2 + 1 + 2 selvage sts (not shown on chart). Numbers at left edge of chart indicate WS rows, numbers at right edge of chart indicate RS rows. Chart begins with a WS row. Rep rows 1 – 4.

Selvage sts: On RS row, ktbl first st, sl last st pwise wyib; on WS row, ptbl first st, sl last st pwise wyif.

Gauge: 16 sts and 38 rows = 10 x 10 cm in main patt on size 5 mm needles.

VERSION 1

Back: With size 4.5 mm needles and Silkhair hand-dyed col 606 cast on 82 (90, 94) sts. Next row (WS): Selvage st, p1, * k2, p2; rep from * to last 4 sts, k2, p1, selvage st. Cont in rib patt as established until piece meas 5 cm from cast-on, increasing 5 (3, 5) sts evenly across last WS row = 87 (93, 99) sts. Change to size 5 mm needles. Next row (RS): Selvage st, work row 1 of main patt chart over next 85 (91, 97) sts as foll: Work 2-st patt rep between arrows 41 (44, 47) times, work to end of chart = 3 sts; selvage st. Cont to follow chart until piece meas 20 (21, 22) cm from cast-on, ending with a WS row. Drop col 606, join col 604 and cont in main patt until piece meas 27 (28, 29) cm from cast-on, ending with a WS row. Shape sleeves: Cast on 4 sts at beg of next 8 rows = 119 (125, 131) sts. Work cast-on sts into main patt. Next row (RS): With col 606 cast on 29 sts, with col 604 work to end of row, with col 606 cast on 29 sts = 177 (183, 189) sts. Work cast-on sts into main patt. NOTE: Work each block of color with separate ball of yarn. Twist yarns around each other at each color change to prevent holes. Working each block of color

with separate ball of yarn, cont in main patt until piece meas 44 (45, 46) cm from cast-on, ending with a WS row. Bind off all sts. Mark center 47 sts for back neck.

Front: Work same as back until piece meas 39 (40, 41) cm from cast-on, ending with a WS row. Shape neck: Next row (RS): Bind off center 27 sts. Working each side separately, bind off 5 sts at each neck edge 1 time, 3 sts 1 time, 2 sts 1 time and when same length as back to shoulders, bind off rem 65 (68, 71) sts for each shoulder/overarm.

VERSION 2

Back: With size 4.5 mm needles and Silkhair col 143 cast on 94 (102, 106) sts. Next row (WS): Selvage st, p1, * k2, p2; rep from * to last 4 sts, k2, p1, selvage st. Cont in rib patt as established until piece meas 5 cm from cast-on, increasing 5 (3, 5) sts evenly across last WS row = 99 (105, 111) sts. Change to size 5 mm needles. Next row (RS): Selvage st, work row 1 of main patt chart over next 97 (103, 109) sts as foll: Work 2-st patt rep between arrows 47 (50, 53) times, work to end of chart = 3 sts; selvage st. Cont to follow chart until piece meas 31 (32, 33) cm from cast-on, ending with a WS row. Shape sleeves: Cast on 4 sts at beg of next 8 rows, 29 sts at beg of next 2 rows = 189 (195, 201) sts. Work cast-on sts into main patt. Cont in main patt until piece meas 48 (49, 50) cm from cast-on, ending with a WS row. Bind off all sts. Mark center 47 sts for back neck.

Front: Work same as back until piece meas 43 (44, 45) cm from cast-on, ending with a WS row. Shape neck: Next row (RS): Bind off center 27 sts. Working each side separately, bind off 5 sts at each neck edge 1 time, 3 sts 1 time, 2 sts 1 time and when same length as back to shoulders, bind off rem 71 (74, 77) sts for each shoulder/overarm.

Finishing: Pin pieces to measurements and block. Sew shoulder/overarm seams. **Neckband:** With size 5 mm circular needle and Silkhair hand-dyed col 604 for version 1 or Silkhair col 143 for version 2, pick up and k 92 sts evenly around neck edge. Place beg of rnd marker and join for working in rnds. Work rib patt in rnds for 2.5 – 3 cm. Bind off all sts in rib. **Sleeve cuffs:** With size 4.5 mm needles and Silkhair hand-dyed col 606 for version 1 or Silkhair col 143 for version 2, pick up and k 54 sts evenly along bottom edge of sleeve. Next row (WS): Selvage st, p1, * k2, p2; rep from * to last 4 sts, k2, p1, selvage st. Cont in rib patt as established until cuff meas 5 cm. Bind off all sts in rib. Sew side and sleeve seams.

PULLOVER · SILKHAIR OR SILKHAIR HAND-DYED

Design 11 – Hand-dyed 01



Version 1:

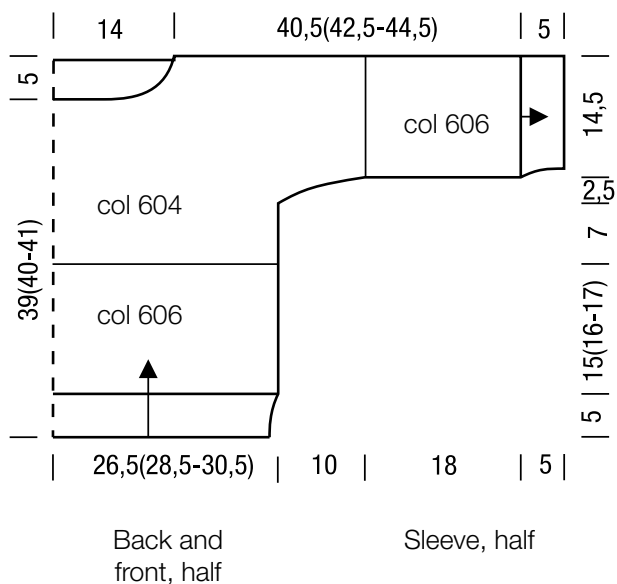


Chart:

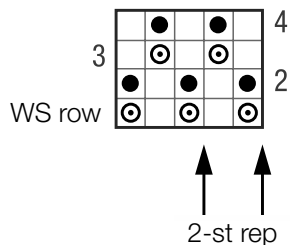
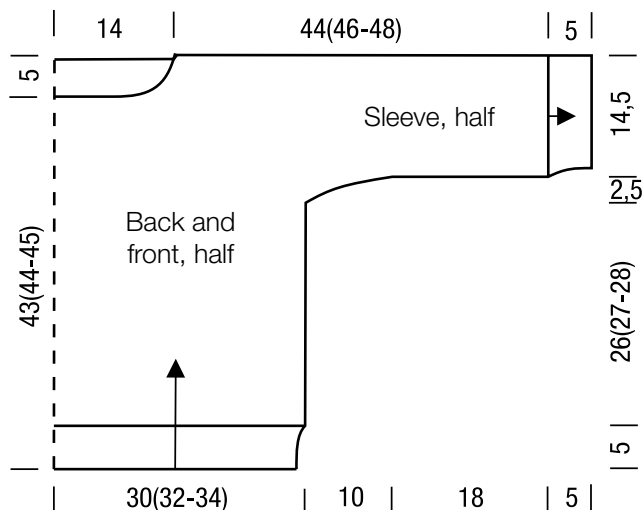


Chart key:

- = k1
- ⊙ = make a yo, then sl next st pwise
- = ktog slipped st with its yo

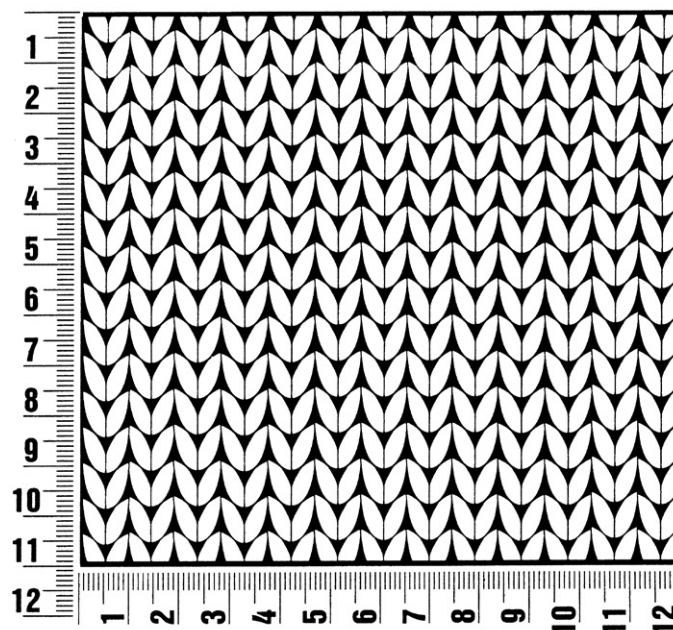
Version 2:



Gauge Swatch

Before you begin ...

...make a gauge swatch. Use the recommended needles, yarns and pattern stitch for your gauge swatch. It should measure approx. 12 cm x 12 cm. Cast-on and bind-off rows, as well as selvage stitches should not be included in the measurement. Pin your swatch and block it as you would the finished pieces of the garment. Count stitches and rows over 10 cm. If your gauge swatch is too small, switch to larger needles. If your gauge swatch is too big, switch to smaller needles.



Abbreviations

beg = begin(ning) · **ch** = chain · **cont** = continue · **dec** = decreas(e)(ing) · **inc** = increas(e)(ing) · **k** = knit · **kwise** = as if to knit
meas = measures · **M1L** = lift strand between sts from front to back and knit this strand through the back loop · **M1R** = lift strand between sts from the back and knit this strand through the front loop · **patt** = pattern · **pm** = place marker · **p** = purl
pwise = as if to purl · **rem** = remain(ing) · **rep** = repeat(s) · **rev St st** = reverse stockinette stitch · **rnd(s)** = round(s) · **RS** = right side · **sc** = single crochet · **skp** = slip 1 stitch as if to knit, knit 1 stitch, pass slipped stitch over knitted stitch · **sk2p** = slip 1 stitch as if to knit, knit 2 together, pass slipped stitch over knitted stitch · **s2kp** = slip 2 stitches as if to knit, k 1 stitch, pass slipped stitches over knitted stitch · **sl** = slip · **st(s)** = stitch(es) · **St st** = stockinette stitch · **tbl** = through the back loop · **tog** = together · **wyib** = with yarn in back of work · **wyif** = with yarn in front of work · **WS** = wrong side · **yo(s)** = yarn over(s)

Publisher's Info

Publisher: Lana Grossa GmbH, Gaimersheim, www.lanagrossa.com

Photographer: Wilfried Wulff, www.wilfriedwulff.com