



www.lanagrossa.com

**SHRUG · ECOPUNO OR
ECOPUNO HAND-DYED**
Design 12 – Hand-dyed 01

SHRUG · ECOPUNO OR ECOPUNO HAND-DYED

Design 12 – Hand-dyed 01



Size 36/38 (40/42, 44)

Instructions are given for first size. Figures in parenthesis refer to larger sizes. When only one figure is given, it applies to all sizes.

Materials: **250 (300, 350) g** of Lana Grossa **Ecopuno** (72% cotton, 17% Merino wool, 11% baby alpaca; 215 m/50 g) in Mint Turquoise (**col 44**) or **250 (300, 350) g** of Lana Grossa **Ecopuno hand-dyed** (72% cotton, 17% Merino wool, 11% baby alpaca; 215 m/50 g) in Moss/Beige/Black Brown/Mint/Grey Brown (**col 505**). Size size 4 mm circular needles, 80 and 40 cm long.

Seed st in rows: Even number of sts. **Row 1:** Selvage st, * k1, p1; rep from *, end selvage st. **Row 2:** Selvage st, purl the knit sts and knit the purl sts, selvage st. Rep row 2 for seed st.

Seed st in rnds: Even number of sts. **Rnd 1:** * K1, p1; rep from * around. **Rnd 2:** Purl the knit sts and knit the purl sts. Rep rnd 2 for seed st.

Woven patt: Work according to chart. Multiple of 10 + 2 selvage sts (not shown on chart). Numbers at right edge of chart indicate RS rows, numbers at left edge of chart indicate WS rows. Rep rows 1 – 14.

Selvage sts: On every row: Knit first and last st.

Gauges: On size 4 mm needles: 24 sts and 35 rows = 10 x 10 cm in woven patt; 24 sts and 36 rows = 10 x 10 cm in seed st.

Shrug: Worked in one piece, beginning with fronts. Arrow on schematic shows direction of work. With longer size 4 mm circular needle and Ecopuno or Ecopuno hand-dyed cast on 306 (326, 346) sts. Working first and last st as selvage sts,

work in seed st until piece meas 6 cm from cast-on, ending with a WS row. Next row (RS): Selvage st, work next 12 sts in seed st as established, work row 1 of woven patt chart over next 280 (300, 320) sts, work next 12 sts in seed st as established, selvage st. Work in patt as set by last row until piece meas 26 (28, 30) cm from cast-on, ending with a WS row. Bind off 77 (82, 87) sts at beg of next 2 rows = 152 (162, 172). Maintaining selvage sts, work woven patt according to chart across all sts for 26 (28, 30) cm, ending with a WS row. Maintaining selvage sts, work in seed st across all sts for 6 cm. Bind off all sts in patt.

Finishing: Pin piece to measurements and block. Fold left front along fold line [see dashed line on schematic], matching * to *. Sew side seam over 14 cm. Repeat for right front. **Arm-hole bands:** With shorter size 4 mm circular needle, pick up and k 86 (96, 106) sts evenly around armhole edge. Place beg of rnd marker and join for working in rnds. Work seed st in rnds for 6 cm. Bind off all sts in patt.

Chart

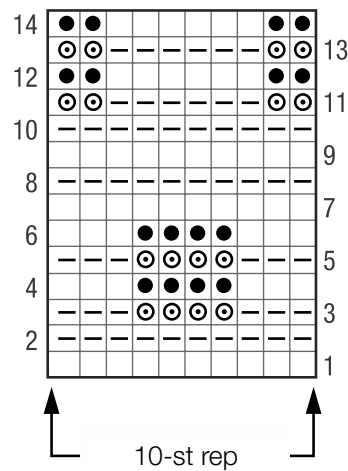
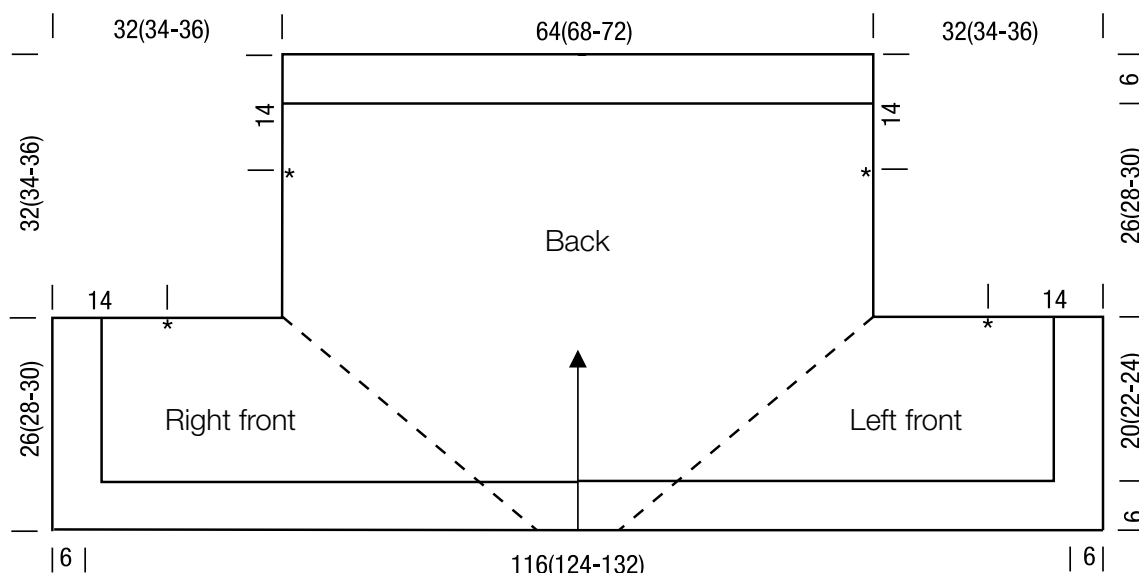


Chart key:

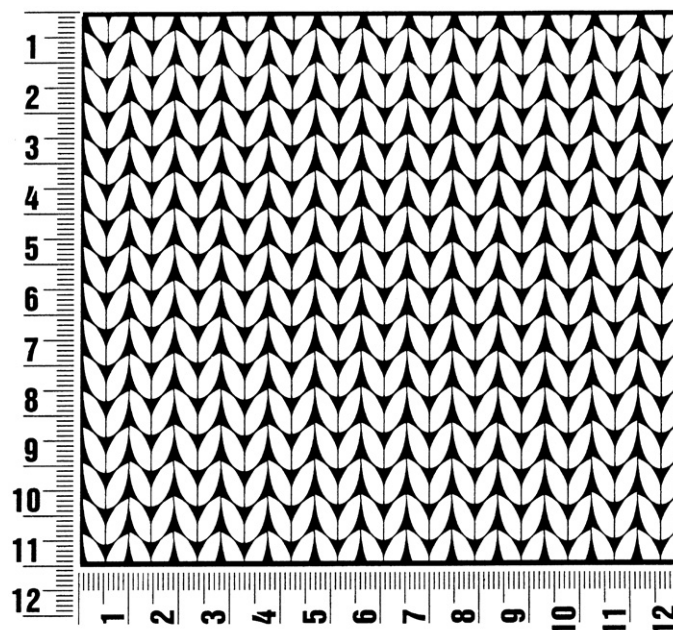
- = k1
- ▬ = p1
- ⊙ = sl 1 pwise wyib
- ◼ = sl 1 pwise wyif



Gauge Swatch

Before you begin ...

...make a gauge swatch. Use the recommended needles, yarns and pattern stitch for your gauge swatch. It should measure approx. 12 cm x 12 cm. Cast-on and bind-off rows, as well as selvage stitches should not be included in the measurement. Pin your swatch and block it as you would the finished pieces of the garment. Count stitches and rows over 10 cm. If your gauge swatch is too small, switch to larger needles. If your gauge swatch is too big, switch to smaller needles.



Abbreviations

beg = begin(ning) · **ch** = chain · **cont** = continue · **dec** = decreas(e)(ing) · **inc** = increas(e)(ing) · **k** = knit · **kwise** = as if to knit
meas = measures · **M1L** = lift strand between sts from front to back and knit this strand through the back loop · **M1R** = lift strand between sts from the back and knit this strand through the front loop · **patt** = pattern · **pm** = place marker · **p** = purl
pwise = as if to purl · **rem** = remain(ing) · **rep** = repeat(s) · **rev St st** = reverse stockinette stitch · **rnd(s)** = round(s) · **RS** = right side · **sc** = single crochet · **skp** = slip 1 stitch as if to knit, knit 1 stitch, pass slipped stitch over knitted stitch · **sk2p** = slip 1 stitch as if to knit, knit 2 together, pass slipped stitch over knitted stitch · **s2kp** = slip 2 stitches as if to knit, k 1 stitch, pass slipped stitches over knitted stitch · **sl** = slip · **st(s)** = stitch(es) · **St st** = stockinette stitch · **tbl** = through the back loop · **tog** = together · **wyib** = with yarn in back of work · **wyif** = with yarn in front of work · **WS** = wrong side · **yo(s)** = yarn over(s)

Publisher's Info

Publisher: Lana Grossa GmbH, Gaimersheim, www.lanagrossa.com

Photographer: Wilfried Wulff, www.wilfriedwulff.com