



www.lanagrossa.com

**SHAWL · SILKHAIR HAND-DYED &
SILKHAIR**

Design 19 – Hand-dyed 01

SHAWL · SILKHAIR HAND-DYED & SILKHAIR

Design 19 – Hand-dyed 01



Size 36 x 184 cm

Materials: 100 g of Lana Grossa **Silkhair hand-dyed** (70% superkid mohair, 30% silk; 400 m/50 g) in Orange/Pink/Yellow/Blush/Sky Blue/Powder Pink (**col 603**) and **25 g each** of Lana Grossa **Silkhair** (70% superkid mohair, 30% silk; 210 m/25 g) in Dark Orange (**col 136**) and Amber (**col 146**). Size 4 mm crochet hook.

Motif: Work according to chart 1. Motifs are shown in black on chart. Make an adjustable ring. Work first rnd into ring. Pull tail yarn to cinch ring closed. Work rnds 1 – 3 for each motif once. Fasten off at end of rnd 3.

Main patt: Multiple of 22 + 19 + 1. Work according to chart 1. Main patt is shown in grey on chart. Work to patt rep, work 22-st patt rep between arrows throughout, work to end of chart. Numbers at right and left edge of chart indicate rows.

Assembly diagram: Arrange motifs following assembly diagram.

Gauge: 35 sts and 12 rows = 10 x 10 cm in main patt; 3-rnd motif meas 6 cm in diameter.

Shawl: Center section: Crochet a total of 30 motifs. With motifs arranged as shown on assembly diagram, join motifs as you go. To join, sc to adjoining motif's ch-3 sp. Left section: Turn work 90 degrees clockwise. Sl st-join Silkhair hand-

dyed to motif 1 ch-3 sp [see A on chart 1]. Work row 1 of main patt: Work to patt rep, work 22-st patt rep between arrows 5 times, work to end of chart. Cont to follow chart 1, work rows 2 – 4 once, then rep rows 3 and 4 until approx. 57 cm have been worked in main patt. Break Silkhair hand-dyed, join Silkhair Amber and work chart rows a and b. Fasten off at end of row b, leaving long tail. Right section: Turn work, sl st-join Silkhair hand-dyed to motif 30 ch-3 sp and work in main patt same as for left section. Put work aside. Left bottom section: Crochet motifs 1 – 12, always work rnd 1 with Amber and rnds 2 and 3 with Dark Orange. Join motifs as you go. To join, sc to adjoining motif's ch-3 sp. Turn work. Sl st-join Silkhair hand-dyed to motif 12 ch-3 sp. Work row 1 of main patt: Work to patt rep, work 22-st patt rep between arrows 5 times, work to end of chart. Cont to follow chart 1, work row 2 once, then work rows 3 and 4 two times. Break Silkhair hand-dyed, join Silkhair Amber and work chart row a. Next, work row c of chart 2 to join left bottom section to left section. Bottom row a on chart 2 shows last row worked for left bottom section. Top row b shows last row worked for left section. To join pieces, sc into dc sts and/or ch-sps as shown on chart. Use yarn tail left at end of row b of left section to join pieces at edge (see *). Right bottom section: Work same as left bottom section at opposite edge of shawl.

Finishing: Work rev sc [work sc from left to right] along side edges of left and right half. Carefully weave in all ends. Pin piece to measurements and block.

SHAWL · SILKHAIR HAND-DYED & SILKHAIR

Design 19 – Hand-dyed 01



Chart 1

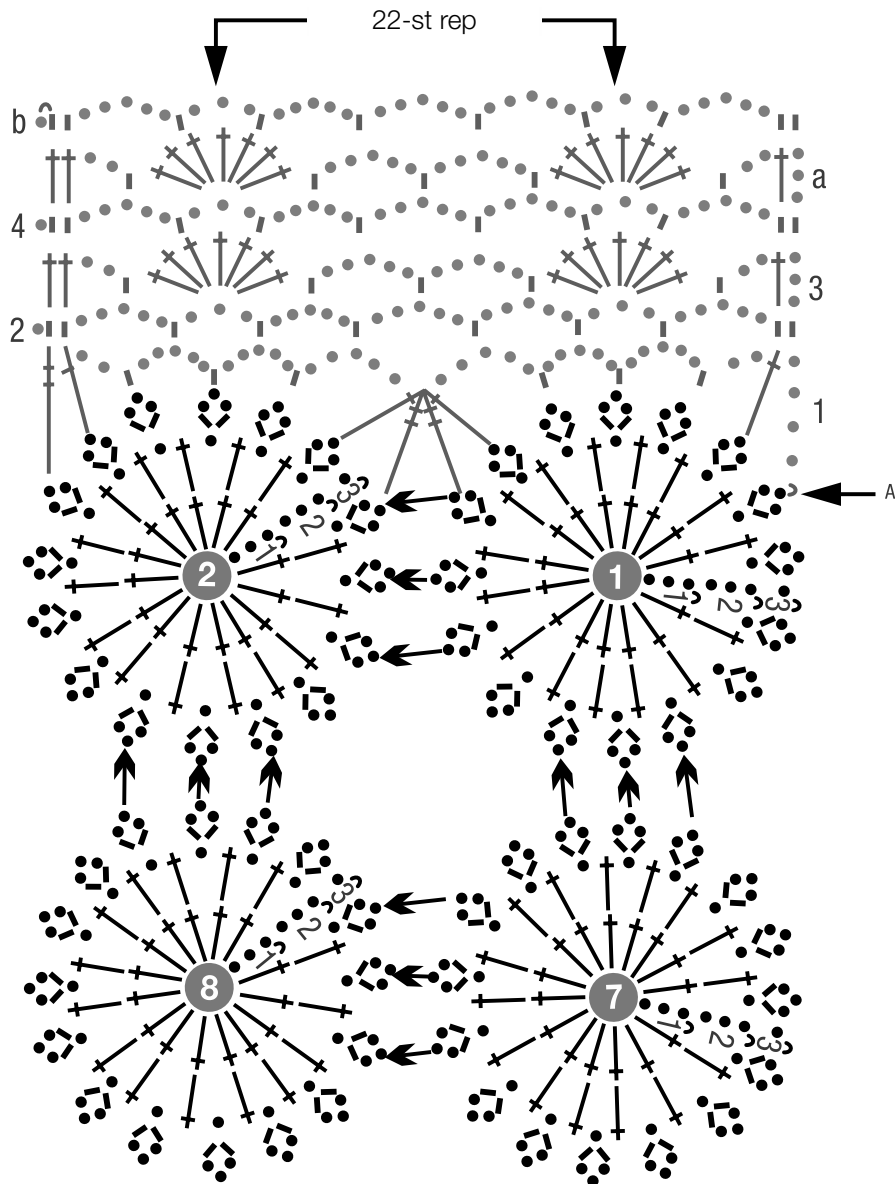
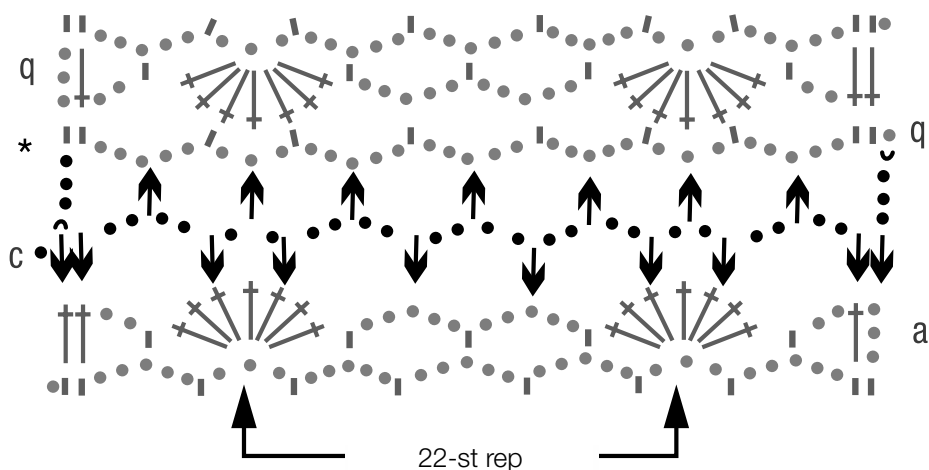


Chart 2

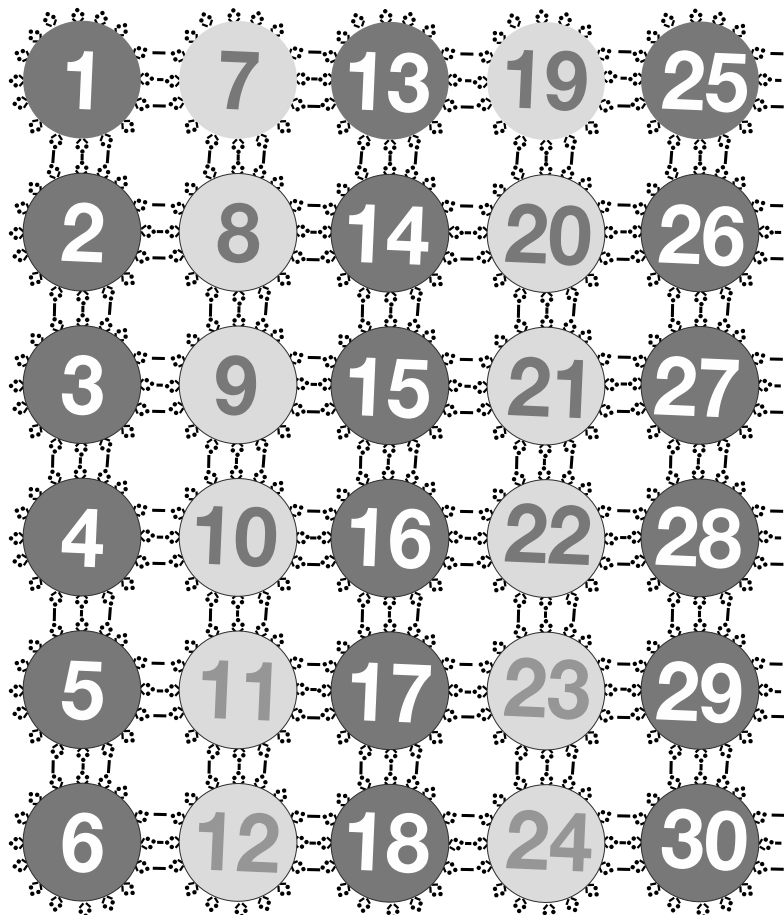


SHAWL · SILKHAIR HAND-DYED & SILKHAIR

Design 19 – Hand-dyed 01



Assembly diagram



= motif in Amber

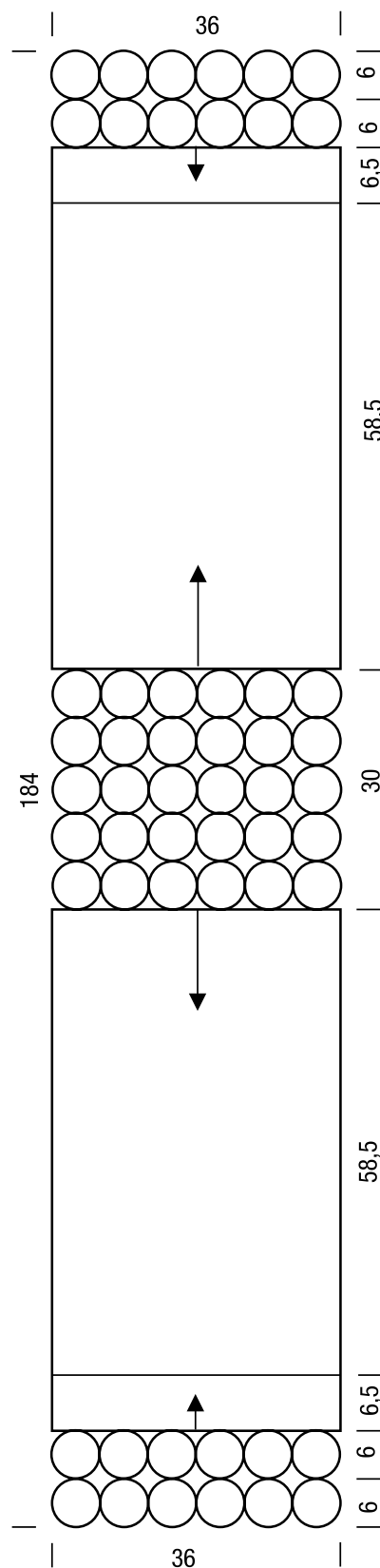
= motif in Dark Orange

Chart key:

- = chain (ch)
- = (slip stitch (sl st))
- = single crochet (sc)
- = sc-join
- = double crochet (dc)
- = treble crochet (tr)
- = work 1 dc, 2 tr, 1 dc tog



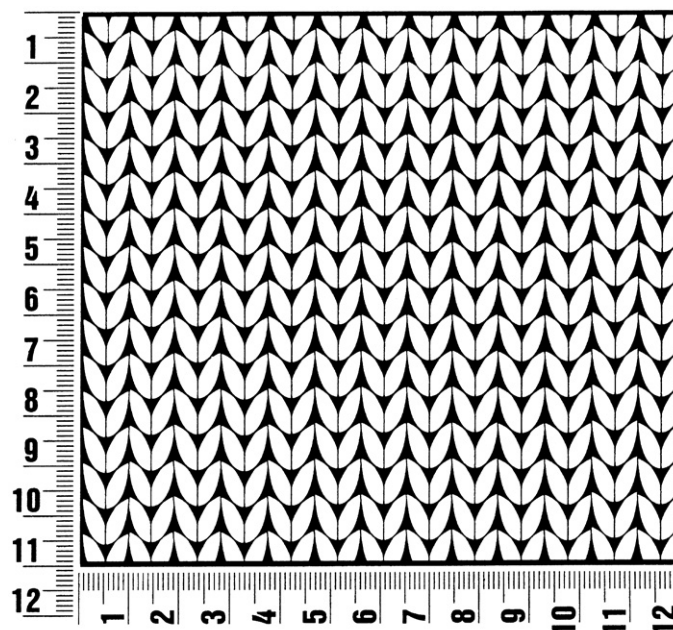
Shawl



Gauge Swatch

Before you begin ...

...make a gauge swatch. Use the recommended needles, yarns and pattern stitch for your gauge swatch. It should measure approx. 12 cm x 12 cm. Cast-on and bind-off rows, as well as selvage stitches should not be included in the measurement. Pin your swatch and block it as you would the finished pieces of the garment. Count stitches and rows over 10 cm. If your gauge swatch is too small, switch to larger needles. If your gauge swatch is too big, switch to smaller needles.



Abbreviations

beg = begin(ning) · **ch** = chain · **cont** = continue · **dec** = decreas(e)(ing) · **inc** = increas(e)(ing) · **k** = knit · **kwise** = as if to knit
meas = measures · **M1L** = lift strand between sts from front to back and knit this strand through the back loop · **M1R** = lift strand between sts from the back and knit this strand through the front loop · **patt** = pattern · **pm** = place marker · **p** = purl
pwise = as if to purl · **rem** = remain(ing) · **rep** = repeat(s) · **rev St st** = reverse stockinette stitch · **rnd(s)** = round(s) · **RS** = right side · **sc** = single crochet · **skp** = slip 1 stitch as if to knit, knit 1 stitch, pass slipped stitch over knitted stitch · **sk2p** = slip 1 stitch as if to knit, knit 2 together, pass slipped stitch over knitted stitch · **s2kp** = slip 2 stitches as if to knit, k 1 stitch, pass slipped stitches over knitted stitch · **sl** = slip · **st(s)** = stitch(es) · **St st** = stockinette stitch · **tbl** = through the back loop · **tog** = together · **wyib** = with yarn in back of work · **wyif** = with yarn in front of work · **WS** = wrong side · **yo(s)** = yarn over(s)

Publisher's Info

Publisher: Lana Grossa GmbH, Gaimersheim, www.lanagrossa.com

Photographer: Wilfried Wulff, www.wilfriedwulff.com