



www.lanagrossa.com

**SHAWL · SILKHAIR &
SILKHAIR HAND-DYED**
Design 23 – Hand-dyed 01

SHAWL · SILKHAIR & SILKHAIR HAND-DYED

Design 23 – Hand-dyed 01



Size 102 x 220 cm

Materials: **50 g each** of Lana Grossa **Silkhair hand-dyed** (70% superkid mohair, 30% silk; 400 m/50 g) in Orange/Pink/Yellow/Rose/Sky Blue/Powder Pink (**col 603**) and Salmon/Orange/Rust/Ecru/Amber/Pink/Fuchsia (**col 605**) and **25 g** of Lana Grossa **Silkhair** (70% superkid mohair, 30% silk; 210 m/25 g) in Amber (**col 146**). Size 5 mm circular needles, 80 and 120 cm long.

St st: K on RS, p on WS.

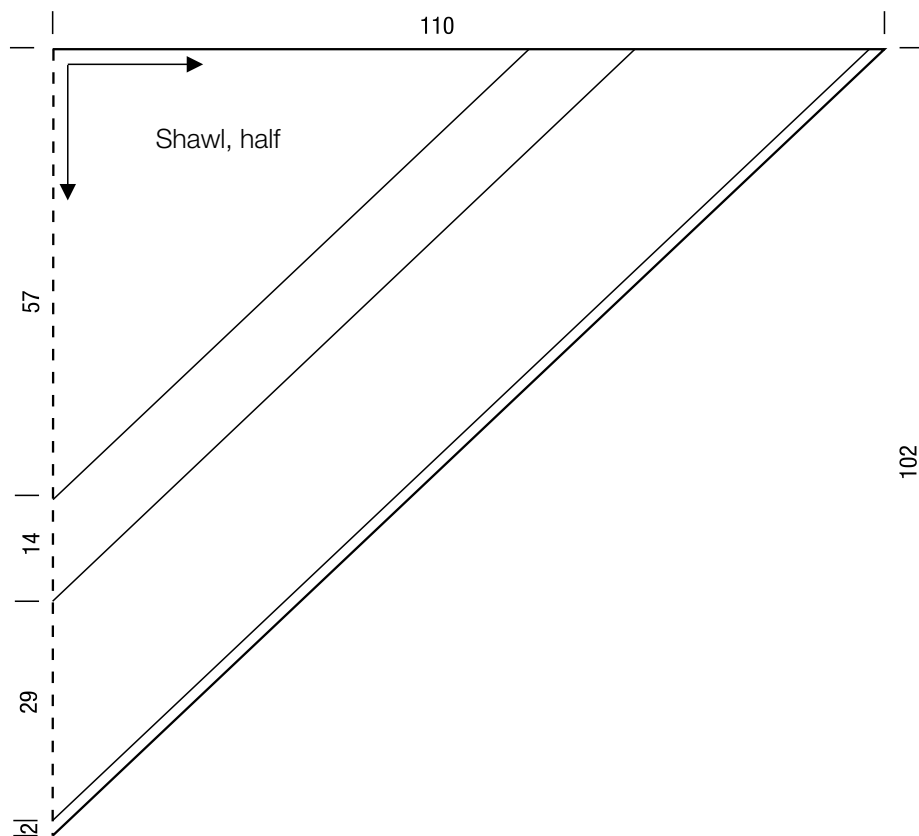
Garter st: K every row.

Gauge: 17 sts and 27 rows = 10 x 10 cm in St st on size 5 mm needles.

Shawl: Worked from the center neck down and outward to the points. Arrows on schematic show direction of work. With shorter size 5 mm circular needle and col 603 cast on 5 sts. K

1 WS row. Place locking st marker in center st. **Row 1 (RS):** K1, M1R, k1, yo, k1 (= marked center st), yo, k1, M1R, k1 = 9 sts. **Row 2 (WS):** K1, purl all sts and yos, end k1. **Row 3 (RS):** K1, M1R, k3, yo, k1 (= marked center st), yo, k3, M1R, k1 = 13 sts. **Row 4 (WS):** As row 2. **Row 5 (RS):** K1, M1R, k to center st, yo, k1 (= marked center st), yo, k to last st, M1R, k1 = 17 sts. **Row 6 (WS):** As row 2. Rep rows 5 and 6 until 241 sts are on the needle. Change to longer size 5 mm circular needle when necessary. Break col 603, join col 146. **Next row (RS):** K1, M1R, k to center st, yo, k1 (= marked center st), yo, k to last st, M1R, k1. **Next row (WS):** Knit all sts and yos. Rep last 2 rows until 293 sts are on the needle. Break col 146, join col 605. Work rows 5 and 6 until 405 sts are on the needle. Break col 605, join col 146. **Next row (RS):** K1, M1R, k to center st, yo, k1 (= marked center st), yo, k to last st, M1R, k1. **Next row (WS):** Knit all sts and yos. Rep last 2 rows once more = 413 sts. Very loosely bind off all sts.

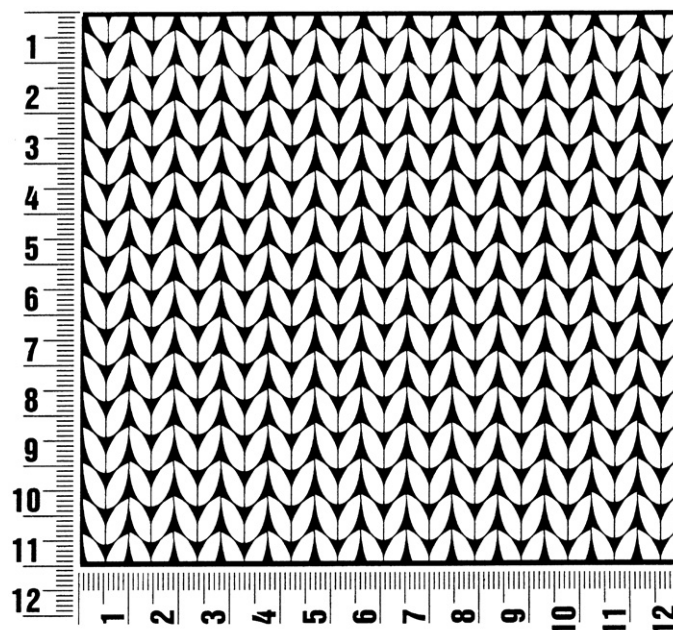
Finishing: Pin piece to measurements and block.



Gauge Swatch

Before you begin ...

...make a gauge swatch. Use the recommended needles, yarns and pattern stitch for your gauge swatch. It should measure approx. 12 cm x 12 cm. Cast-on and bind-off rows, as well as selvage stitches should not be included in the measurement. Pin your swatch and block it as you would the finished pieces of the garment. Count stitches and rows over 10 cm. If your gauge swatch is too small, switch to larger needles. If your gauge swatch is too big, switch to smaller needles.



Abbreviations

beg = begin(ning) · **ch** = chain · **cont** = continue · **dec** = decreas(e)(ing) · **inc** = increas(e)(ing) · **k** = knit · **kwise** = as if to knit
meas = measures · **M1L** = lift strand between sts from front to back and knit this strand through the back loop · **M1R** = lift strand between sts from the back and knit this strand through the front loop · **patt** = pattern · **pm** = place marker · **p** = purl
pwise = as if to purl · **rem** = remain(ing) · **rep** = repeat(s) · **rev St st** = reverse stockinette stitch · **rnd(s)** = round(s) · **RS** = right side · **sc** = single crochet · **skp** = slip 1 stitch as if to knit, knit 1 stitch, pass slipped stitch over knitted stitch · **sk2p** = slip 1 stitch as if to knit, knit 2 together, pass slipped stitch over knitted stitch · **s2kp** = slip 2 stitches as if to knit, k 1 stitch, pass slipped stitches over knitted stitch · **sl** = slip · **st(s)** = stitch(es) · **St st** = stockinette stitch · **tbl** = through the back loop · **tog** = together · **wyib** = with yarn in back of work · **wyif** = with yarn in front of work · **WS** = wrong side · **yo(s)** = yarn over(s)

Publisher's Info

Publisher: Lana Grossa GmbH, Gaimersheim, www.lanagrossa.com

Photographer: Wilfried Wulff, www.wilfriedwulff.com