



**LAMP SHADE/PLANTER COVER .**  
**LACE SETA MULBERRY**  
Design 46 – Home 73

# LAMP SHADE/PLANTER COVER • LACE SETA MULBERRY

## Design 46 – Home 73



**Size** approx. 44 cm in circumference, 20 cm high

**Materials:** 100 g each of Lana Grossa **Lace Seta Mulberry** (35% Mulberry silk, 35% baby Alpaca, 30% extrafine Merino wool; 175 m/50 g) in Grey (**col 14**), Grey Green (**col 13**), Beige (**col 12**) and Greige (**col 2**). Size 4 mm crochet hook.

**Note:** Work with 2 strands held tog throughout.

**Crochet patt:** Multiple of 8. Worked in rnds according to chart. Numbers at right edge of chart indicate rnds. Beg rnds with the number of ch shown on chart. Join rnds with sl st in top of beg ch. Work to patt rep, work patt rep 12 times around, work to end of chart. Work dc groups into ch-sp on rnd below. Work rnds 1 – 17 once.

**Gauge:** 3 patt reps and 8 rnds = 11 x 10 cm with size 4 mm hook and 2 strands held tog.

**Cover:** With size 4 mm hook and 2 strands of desired color held tog, ch 96, sl st in first ch to form ring. Work crochet patt according to chart for 17 rnds and piece meas 20 cm from beg. Fasten off.

**Finishing:** Carefully weave in all ends. **Note:** Lamp shade cover is shown with last rnd at bottom, planter cover is shown with last rnd at top.

Chart

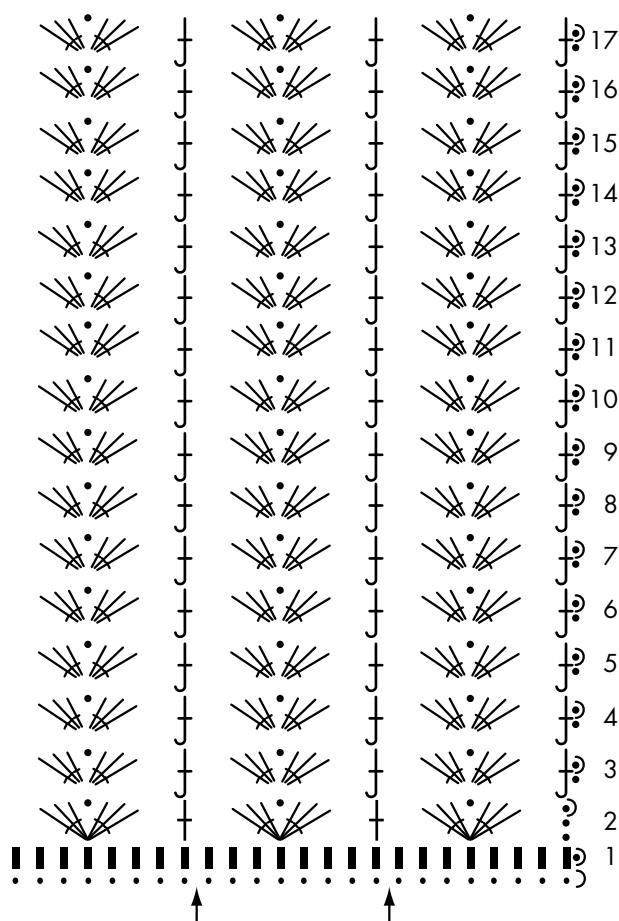


Chart key:

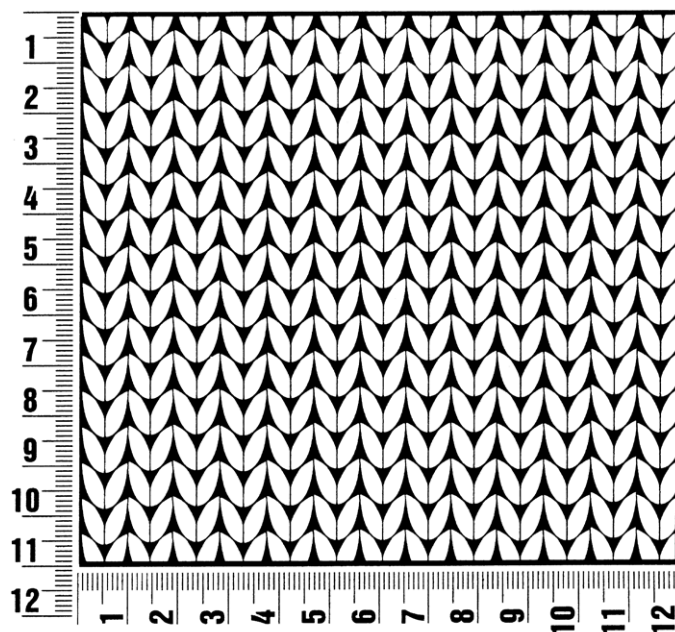
- = chain (ch)
- ∩ = slip stitch (sl st)
- = single crochet (sc)
- ↑ = double crochet (dc)
- = [3 dc, ch 1, 3 dc] in same st
- = insert hook from front to back to front around post of st one rnd below, work 1 dc



## Gauge Swatch

### Before you begin ...

...make a gauge swatch. Use the recommended needles, yarns and pattern stitch for your gauge swatch. It should measure approx. 12 cm x 12 cm. Cast-on and bind-off rows, as well as selvage stitches should not be included in the measurement. Pin your swatch and block it as you would the finished pieces of the garment. Count stitches and rows over 10 cm. If your gauge swatch is too small, switch to larger needles. If your gauge swatch is too big, switch to smaller needles.



## Abbreviations

**beg** = begin(ning) · **ch** = chain · **cont** = continue · **dec** = decreas(e)(ing) · **inc** = increas(e)(ing) · **k** = knit · **kwise** = as if to knit  
**meas** = measures · **M1L** = lift strand between sts from front to back and knit this strand through the back loop · **M1R** = lift strand between sts from the back and knit this strand through the front loop · **patt** = pattern · **pm** = place marker · **p** = purl  
**pwise** = as if to purl · **rem** = remain(ing) · **rep** = repeat(s) · **rev St st** = reverse stockinette stitch · **rnd(s)** = round(s) · **RS** = right side · **sc** = single crochet · **skp** = slip 1 stitch as if to knit, knit 1 stitch, pass slipped stitch over knitted stitch · **sk2p** = slip 1 stitch as if to knit, knit 2 together, pass slipped stitch over knitted stitch · **s2kp** = slip 2 stitches as if to knit, k 1 stitch, pass slipped stitches over knitted stitch · **sl** = slip · **st(s)** = stitch(es) · **St st** = stockinette stitch · **tbl** = through the back loop · **tog** = together · **wyib** = with yarn in back of work · **wyif** = with yarn in front of work · **WS** = wrong side · **yo(s)** = yarn over(s)

### Publisher's Info

**Publisher:** Lana Grossa GmbH, Gaimersheim, [www.lanagrossa.com](http://www.lanagrossa.com)

**Photographer:** Herbert Dehn