



[www.lanagrossa.com](http://www.lanagrossa.com)

# **PULLOVER · AMOROSO**

Design 01 – Lookbook 10



# PULLOVER • AMOROSO

## Design 01 – Lookbook 10



**Size** 36/38 (40/42, 44/46, 48)

Instructions are given for first size. Figures in parenthesis refer to larger sizes. When only one figure is given, it applies to all sizes.

**Materials:** 300 (400, 400, 500) g of Lana Grossa **Amoroso** (23% pure wool, 23% silk, 23% cotton, 23% acrylic, 8% polyamide; 400 m/100 g) in Jade/Fuchsia/Green Grey/Berry (**col 6**). Size 5 and 6 mm needles; size 6 mm circular needle, 120 cm long; size 5 mm circular needle, 40 cm long.

**Rib patt:** Multiple of 2 + 1 + 4 selvage sts. **Row 1 (WS):** Two-stitch selvage, \* k1, p1tbl; rep from \* to last 3 sts, k1, two-stitch selvage. **Row 2 (RS):** Two-stitch selvage, \* p1, k1tbl; rep from \* to last 3 sts, p1, two-stitch selvage. Rep rows 1 and 2 for rib patt.

**Rev St st:** P on RS, k on WS.

**Main patt:** Multiple of 2 + 1. Work according to chart. Numbers at right edge of chart indicate RS rows, numbers at left edge of chart indicate WS rows. Rep rows 1 – 4 for main patt.

**Two-stitch selvage:** On RS row, sl 1 pwise wyib, k1, patt to last 2 sts, k1, sl 1 pwise wyib. On WS row, p1, sl 1 pwise wyif, patt to last 2 sts, sl 1 pwise wyif, p1.

**Full-fashion decrease 1:** At beg of RS row, two-stitch selvage, p1, k2tog; at end of RS row, work to last 5 sts, skp, p1, two-stitch selvage.

**Full-fashion decrease 2:** At beg of RS row, two-stitch selvage, p1, k2tog; at end of RS row, work to last 5 sts, skp, p1, two-stitch selvage. At beg of WS row, two-stitch selvage, k1, p2tog tbl; at end of WS row, work to last 5 sts, p2tog, k1, two-stitch selvage.

**Full-fashion increase 1:** On RS row: M1R, 3 sts in from each edge.

**Full-fashion increase 2:** On RS row: M1R, 3 sts in from each edge. On WS row: M1L, 3 sts in from each edge.

**Gauge:** 18 sts and 32 rows = 10 x 10 cm in main patt on size 6 mm needles.

**Note:** Pullover is worked side to side and in one piece beginning at right sleeve. Arrow on schematic shows direction of work.

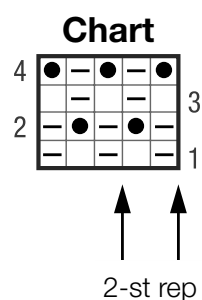
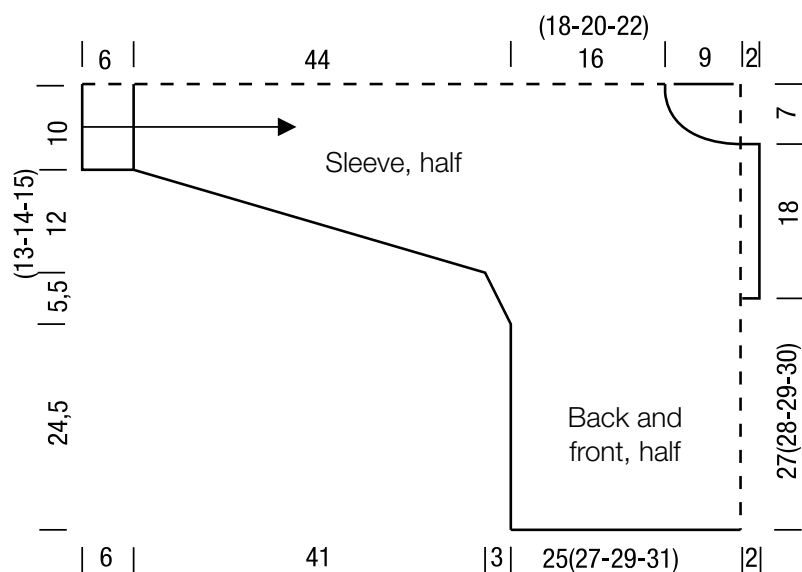
**Pullover:** With size 5 mm needles cast on 39 sts. Beg and end with a WS row, work in rib patt for 6 cm. Change to size 6 mm needles. Next row (RS): Two-stitch selvage, 1 st in rev St st, work main patt according to chart to last 3 sts, 1 st in rev St st, two-stitch selvage. Work in patt as set by last row and shape sleeve as foll: Working full-fashion inc 1, inc 1 st at each

end of next RS row, then every 6th row 19 times, then every 8th row 1 time (then every alt 4th and 6th row 9 times, then every 6th row 13 times / then every alt 4th and 6th row 21 times, then every 6th row 3 times / then every 4th row 5 times, then every alt 4th and 6th row 21 times) = 81 (85, 89, 93) sts. Work increased sts into main patt. Work even until piece meas 47 cm from cast-on, ending with a WS row. Working full-fashion inc 2, inc 1 st at each end of next 10 rows = 101 (105, 109, 113) sts. Work increased sts into main patt. Change to size 6 mm circular needle. Cast on 44 sts at beg of next 2 rows = 189 (193, 197, 201) sts. Work cast-on sts into main patt. Work even until piece meas 66 (68, 70, 72) cm from sleeve cast-on, ending with a WS row. Divide for front and back: Next row (RS): Patt over 95 (97, 99, 101) sts and sl to a holder, patt to end. **Back:** Cont in patt across 94 (96, 98, 100) back sts only until back meas 18 cm from divide, ending with a WS row. Sl back sts on separate holder, cut yarn. **Front:** Return 95 (97, 99, 101) held sts to needle and with WS facing, rejoin yarn. Next row (WS): Shape neck: Bind off 5 sts, patt to end. Cont in patt, bind off 2 sts at beg of next WS row, 1 st at beg of next 6 WS rows = 82 (84, 86, 88) sts. Work even until front meas 9 cm from divide, ending with a WS row. Work placket overlap: Next row (RS): Patt over first 50 (52, 54, 56) sts and sl to a holder, patt to end. Cont in patt over rem 32 sts for 2 cm, ending with a WS row. Bind off. Put piece aside. Work placket underlap: With size 6 mm needles, cast on 32 sts and work in main patt for 2 cm, ending with a RS row. Next row (WS): Patt over 32 placket sts and 50 (52, 54, 56) front sts on hold = 82 (84, 86, 88) sts. Complete left half of front neck as given for right half, reversing shaping, that is: cast on sts in place of binding off sts at neck edge = 94 (96, 98, 100) sts. Work even until front meas 18 cm from divide, ending with a WS row. Next RS (joining) row: Patt over 94 (96, 98, 100) front sts and 94 (96, 98, 100) held back sts and cast on 1 st between front and back = 189 (193, 197, 201) sts. Work even until piece meas 13 (15, 17, 19) cm from joining row, ending with a WS row. Bind off 44 sts at beg of next 2 rows. Working full-fashion dec 2, dec 1 st at each end of next 10 rows = 81 (85, 89, 93) sts. Change to size 6 mm needles. Work even for 8 (6, 6, 4) rows. Working full-fashion dec 1, dec 1 st at each end of next RS row, then every 6th row 20 times (then every 6th row 12 times, then every alt 4th and 6th row 10 times / then every 6th row 2 times, then every alt 4th and 6th row 22 times / then every alt 4th and 6th row 20 times, then every 4th row 6 times) = 39 sts. Work even until left sleeve meas 41 cm, ending with a RS row. Change to size 5 mm needles. Beg and end with a WS row, work in rib patt for 6 cm. Bind off all sts in rib.

**Finishing:** Pin piece to measurements and block. **Neck-band:** With size 5 mm circular needle, pick up and k 91 sts evenly along right front, back and left front neck edge, omitting placket. Working a two-stitch selvage at each edge, work in rib patt for 3 cm. Loosely bind off all sts in rib. Sew down placket underlap. Sew side and sleeve seams, working 1 st in from edge.

# PULLOVER · AMOROSO

## Design 01 – Lookbook 10



### Chart key:

- = k1
- ▢ = p1
- = sl 1 pwise wyif

## Gauge Swatch

### Before you begin ...

...make a gauge swatch. Use the recommended needles, yarns and pattern stitch for your gauge swatch. It should measure approx. 12 cm x 12 cm. Cast-on and bind-off rows, as well as selvage stitches should not be included in the measurement. Pin your swatch and block it as you would the finished pieces of the garment. Count stitches and rows over 10 cm. If your gauge swatch is too small, switch to larger needles. If your gauge swatch is too big, switch to smaller needles.



## Abbreviations

**beg** = begin(ning) · **ch** = chain · **cont** = continue · **dec** = decreas(e)(ing) · **inc** = increas(e)(ing) · **k** = knit · **kwise** = as if to knit  
**meas** = measures · **M1L** = lift strand between sts from front to back and knit this strand through the back loop · **M1R** = lift strand between sts from the back and knit this strand through the front loop · **patt** = pattern · **pm** = place marker · **p** = purl  
**pwise** = as if to purl · **rem** = remain(ing) · **rep** = repeat(s) · **rev St st** = reverse stockinette stitch · **rnd(s)** = round(s) · **RS** = right side · **sc** = single crochet · **skp** = slip 1 stitch as if to knit, knit 1 stitch, pass slipped stitch over knitted stitch · **sk2p** = slip 1 stitch as if to knit, knit 2 together, pass slipped stitch over knitted stitch · **s2kp** = slip 2 stitches as if to knit, k 1 stitch, pass slipped stitches over knitted stitch · **sl** = slip · **st(s)** = stitch(es) · **St st** = stockinette stitch · **tbl** = through the back loop · **tog** = together · **wyib** = with yarn in back of work · **wyif** = with yarn in front of work · **WS** = wrong side · **yo(s)** = yarn over(s)

### Publisher's Info

**Publisher:** Lana Grossa GmbH, Gaimersheim, [www.lanagrossa.com](http://www.lanagrossa.com)

**Photographer:** Wilfried Wulff, [www.wilfriedwulff.com](http://www.wilfriedwulff.com)