



www.lanagrossa.com

4 SCARVES · AMOROSO

Design 06 – Lookbook 10

4 SCARVES · AMOROSO

Design 06 – Lookbook 10



Size 40 x 200 cm

Materials: Lana Grossa **Amoroso** (23% pure wool, 23% silk, 23% cotton, 23% acrylic, 8% polyamide; 400 m/100 g).

Scarf 1: 100 g each in Greige/Green Beige/Light Grey/Sand (**col 1**) and Jade/Violet/Petrol/Camel (**col 3**).

Scarf 2: 100 g each in Light Grey/Jeans/Violet Blue/Grey (**col 4**) and Jade/Fuchsia/Green Grey/Berry (**col 6**).

Scarf 3: 100 g each in Antique Pink/Fuchsia/Orange (**col 5**) and Pale Blue/Pink/Lilac/Sand/Light Olive (**col 2**).

Scarf 4: 100 g each in Yellow/Orange/Apricot/Mustard/Grey (**col 8**) and Linden/Petrol/Grey Green (**col 7**).
Size 5 mm needles.

Mesh stitch: Multiple of 3 + 2 selvage sts. **Row 1 (RS):** Selvage st, * k1, yo, ktog yo and next st; rep from * to last st, end selvage st. **Row 2 (WS):** Selvage st, * k1, yo, ktog yo and next st; rep from * to last st, end selvage st. Rep rows 1 and 2 for mesh st.

Selvage sts: On every row: Knit first and last st.

Gauge: 16 sts and 23 rows = 10 x 10 cm in mesh st on size 5 mm needles.

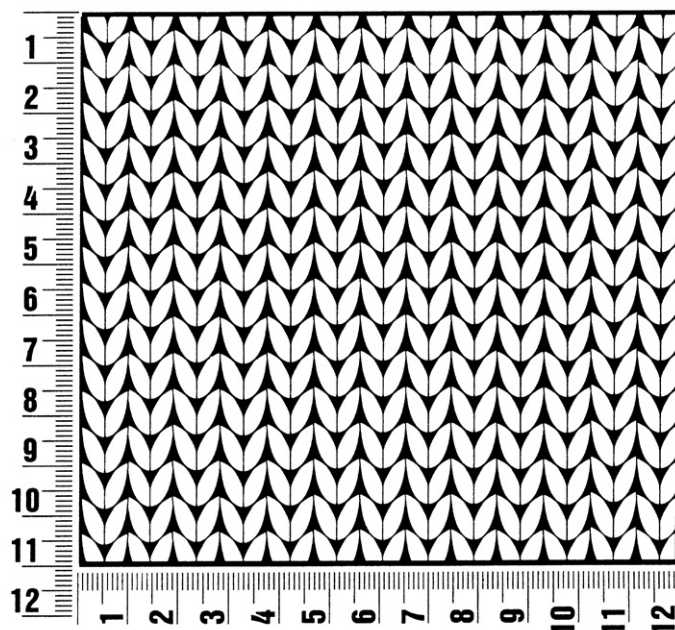
Scarf: With size 5 mm needles and first color listed for desired scarf, cast on 65 sts. Knit 1 WS row. Work in mesh st until yarn is used up, ending with a WS row. With 2nd color listed, cont in mesh st until yarn is almost used up, ending with a WS row. Knit 1 RS row. Bind off all sts kwise.

Finishing: Pin piece to measurements and block. Carefully weave in all ends.

Gauge Swatch

Before you begin ...

...make a gauge swatch. Use the recommended needles, yarns and pattern stitch for your gauge swatch. It should measure approx. 12 cm x 12 cm. Cast-on and bind-off rows, as well as selvage stitches should not be included in the measurement. Pin your swatch and block it as you would the finished pieces of the garment. Count stitches and rows over 10 cm. If your gauge swatch is too small, switch to larger needles. If your gauge swatch is too big, switch to smaller needles.



Abbreviations

beg = begin(ning) · **ch** = chain · **cont** = continue · **dec** = decreas(e)(ing) · **inc** = increas(e)(ing) · **k** = knit · **kwise** = as if to knit
meas = measures · **M1L** = lift strand between sts from front to back and knit this strand through the back loop · **M1R** = lift strand between sts from the back and knit this strand through the front loop · **patt** = pattern · **pm** = place marker · **p** = purl
pwise = as if to purl · **rem** = remain(ing) · **rep** = repeat(s) · **rev St st** = reverse stockinette stitch · **rnd(s)** = round(s) · **RS** = right side · **sc** = single crochet · **skp** = slip 1 stitch as if to knit, knit 1 stitch, pass slipped stitch over knitted stitch · **sk2p** = slip 1 stitch as if to knit, knit 2 together, pass slipped stitch over knitted stitch · **s2kp** = slip 2 stitches as if to knit, k 1 stitch, pass slipped stitches over knitted stitch · **sl** = slip · **st(s)** = stitch(es) · **St st** = stockinette stitch · **tbl** = through the back loop · **tog** = together · **wyib** = with yarn in back of work · **wyif** = with yarn in front of work · **WS** = wrong side · **yo(s)** = yarn over(s)

Publisher's Info

Publisher: Lana Grossa GmbH, Gaimersheim, www.lanagrossa.com

Photographer: Wilfried Wulff, www.wilfriedwulff.com