



www.lanagrossa.com

TOP · ALESSIA

Design 07 – Lookbook 10

Size 36/38 (40/42, 44)

Instructions are given for first size. Figures in parenthesis refer to larger sizes. When only one figure is given, it applies to all sizes.

Materials: 250 (300, 350) g of Lana Grossa **Alessia** (76% cotton, 20% recycled polyester, 4% polyester; 135 m/50 g) in Gold/Copper/Grey Green/Mint (**col 102**) or Red/Orange/Ecru (**col 11**). Size 5 mm needles; size 4 mm circular needle, 40 cm long.

Rib patt: K1tbl, p1.

St st: K on RS, p on WS.

Rev St st: P on RS, k on WS.

Main patt: Multiple of 24 + 15. Work according to chart. Numbers at right edge of chart indicate RS rows; on WS rows purl all sts and yos. Rep rows 1 – 22. NOTE: When working shaping, make sure each yo is paired with a decrease and vice versa.

Two-stitch selvage: On RS row, sl 1 pwise wyib, k1, patt to last 2 sts, k1, sl 1 pwise wyib. On WS row, p1, sl 1 pwise wyif, patt to last 2 sts, sl 1 pwise wyif, p1.

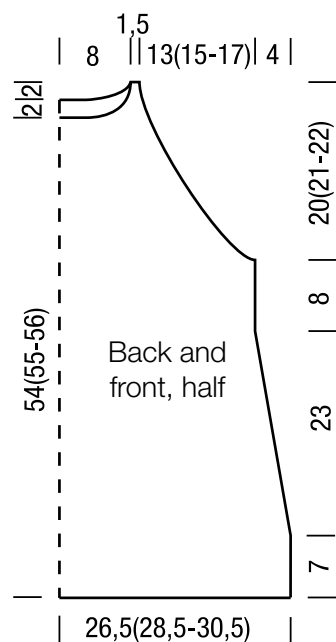
Full-fashion decrease: At beg of RS row, two-stitch selvage, p1, skp; at end of RS row, work to last 5 sts, k2tog, p1, two-stitch selvage.

Gauge: 17 sts and 28 rows = 10 x 10 cm in main patt on size 5 mm needles.

Back: With size 5 mm needles cast on 93 (99, 105) sts. Knit 1 WS row. Next row (RS): Two-stitch selvage, 1 st in rev St st, 0 (3, 6) sts in St st, work main patt according to chart over next 87 sts = work to patt rep, work patt rep 3 times, work to end of chart, 0 (3, 6) sts in St st, 1 st in rev St st, two-stitch selvage. Work in patt as set by last row until piece meas 7 cm from cast-on, ending with a WS row. Shape sides: Dec 1 st at each end of next RS row, then every 10th row 5 times, then every 12th row 1 time = 79 (85, 91) sts. Work even until piece meas 38 cm from cast-on, ending with a WS row. Shape arm-holes: Bind off 2 sts at beg of next 6 (6, 6) rows. Working full-fashion dec, dec 1 st at each end of next 7 (12, 17) RS rows, then every alt RS row 9 (7, 5) times = 35 sts. Next row (WS): Two-stitch selvage, 1 st in rev St st, work next row of main patt to last 3 sts, 1 st in rev St st, two-stitch selvage. Work in patt as set by last row until piece meas 56 (57, 58) cm from cast-on, ending with a WS row. Shape neck: Next row (RS): Bind off center 11 sts. Working each side separately, bind off 4 sts at each neck edge 2 times and when piece meas 2 cm from beg of neck shaping, bind off rem 4 sts for each shoulder.

Front: Work same as back until piece meas 54 (55, 56) cm from cast-on, ending with a WS row. Shape neck: Next row (RS): Bind off center 7 sts. Working each side separately, bind off 2 sts at each neck edge 5 times and when same length as back to shoulders, bind off rem 4 sts for each shoulder.

Finishing: Pin pieces to measurements and block. Sew shoulder and side seams. **Collar:** With size 4 mm circular needle, pick up and k 90 sts evenly around neck edge. Place beg of rnd marker and join for working in rnds. Work rib patt in rnds for 8 cm. Loosely bind off all sts in rib.



Chart

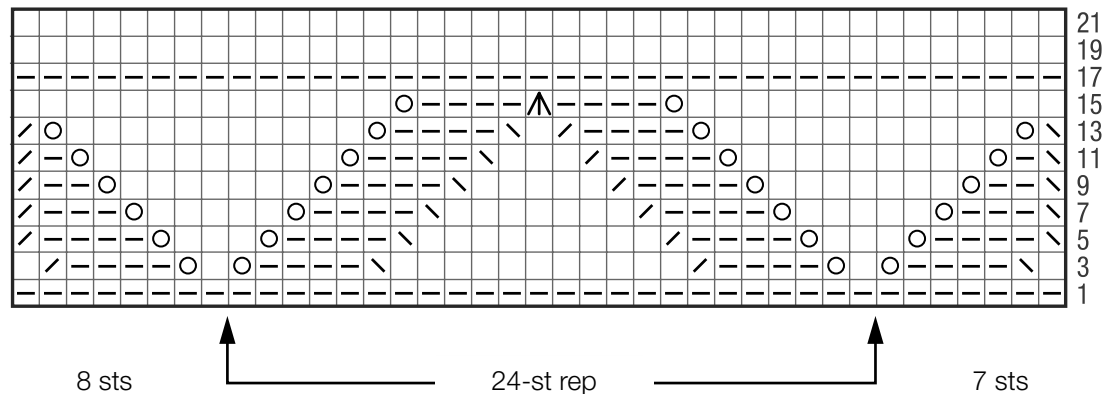


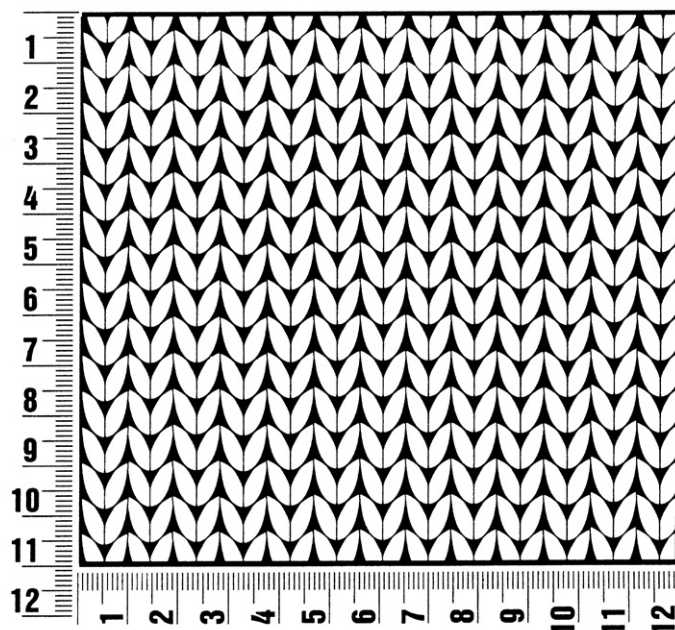
Chart key:

- = k1
- ▢ = p1
- = yo
- ⌈ = k2tog
- ⌋ = skp: sl 1 kwise, k1, pass slipped st over knitted st
- ⌋⌋ = s2kp: sl 2 kwise, k1, pass slipped sts over knitted st

Gauge Swatch

Before you begin ...

...make a gauge swatch. Use the recommended needles, yarns and pattern stitch for your gauge swatch. It should measure approx. 12 cm x 12 cm. Cast-on and bind-off rows, as well as selvage stitches should not be included in the measurement. Pin your swatch and block it as you would the finished pieces of the garment. Count stitches and rows over 10 cm. If your gauge swatch is too small, switch to larger needles. If your gauge swatch is too big, switch to smaller needles.



Abbreviations

beg = begin(ning) · **ch** = chain · **cont** = continue · **dec** = decreas(e)(ing) · **inc** = increas(e)(ing) · **k** = knit · **kwise** = as if to knit
meas = measures · **M1L** = lift strand between sts from front to back and knit this strand through the back loop · **M1R** = lift strand between sts from the back and knit this strand through the front loop · **patt** = pattern · **pm** = place marker · **p** = purl
pwise = as if to purl · **rem** = remain(ing) · **rep** = repeat(s) · **rev St st** = reverse stockinette stitch · **rnd(s)** = round(s) · **RS** = right side · **sc** = single crochet · **skp** = slip 1 stitch as if to knit, knit 1 stitch, pass slipped stitch over knitted stitch · **sk2p** = slip 1 stitch as if to knit, knit 2 together, pass slipped stitch over knitted stitch · **s2kp** = slip 2 stitches as if to knit, k 1 stitch, pass slipped stitches over knitted stitch · **sl** = slip · **st(s)** = stitch(es) · **St st** = stockinette stitch · **tbl** = through the back loop · **tog** = together · **wyib** = with yarn in back of work · **wyif** = with yarn in front of work · **WS** = wrong side · **yo(s)** = yarn over(s)

Publisher's Info

Publisher: Lana Grossa GmbH, Gaimersheim, www.lanagrossa.com

Photographer: Wilfried Wulff, www.wilfriedwulff.com