



www.lanagrossa.com

TOP • ABOUT BERLIN SPOTTY

Design 03 – Filati Journal 61

TOP • ABOUT BERLIN SPOTTY

Design 03 – Filati Journal 61



Size 36/38 (40/42)

Instructions are given for smaller size. Figure in parenthesis refers to larger size. When only one figure is given, it applies to both sizes.

Materials: 200 (250) g of Lana Grossa **About Berlin Spotty** (55% cotton, 26% polyamide, 19% polyester; 125 m/50 g) in Silver Variegated **(col 6)**. Size 4.5 mm needles; size 3.5 mm crochet hook.

Selvage stitches: On every row: Sl first st kwise, k last st.

Drop stitch patt: Work according to chart. Numbers at right edge of chart indicate RS rows, numbers at left edge of chart indicate WS rows. On all WS rows not shown on chart, knit all sts. Work to patt rep, work 1 st between arrows for patt rep, work to end of chart. Work rows 1 – 18 once, then work rows [13 – 18] 6 times, then work rows 55 – 72 once, then work rows [67 – 72] 5 times, then work rows 103 – 120 once, then work rows 115 – 120 twice, then work rows 115 and 116 once = 134 rows.

Gauges: On size 4.5 mm needles and in drop st patt: 15 sts and 31.5 rows = 10 x 10 cm over rows 1 – 18; 15 sts and 21 rows = 10 x 10 cm over rows 55 – 72; 15 sts and 16 rows = 10 x 10 cm over rows 103 – 120.

Back: With size 4.5 mm needles cast on 72 (78) sts. Work drop st patt according to chart for 134 rows. At same time, after 92 rows have been worked and piece meas 35 cm from cast-on, shape armholes as foll: Bind off 3 sts at beg of next 2 rows, 1 st at beg of next 8 rows = 58 (64) sts. Work even until a total of 28 rows has been worked from beg of armhole shaping. Inc 1 st at each end of next 6 RS rows = 70 (76) sts. Work even until a total of 42 rows has been worked from beg of armhole shaping and armhole meas 25 cm. Bind off all sts. Mark center 26 sts for neck.

Front: Work same as back until 128 rows has been worked in drop st patt. Shape neck: Next row (RS): Bind off center 18 sts. Working each side separately, bind off 2 sts at each neck edge 2 times and when same length as back to shoulders, bind off rem 22 (25) sts for each shoulder.

Finishing: Pin pieces to measurements and block. Sew shoulder and side seams. Neck and armhole trim: With size 3.5 mm crochet hook, work 1 rnd sc, 1 rnd rev sc [work sc from left to right] around neck edge and around each armhole edge.

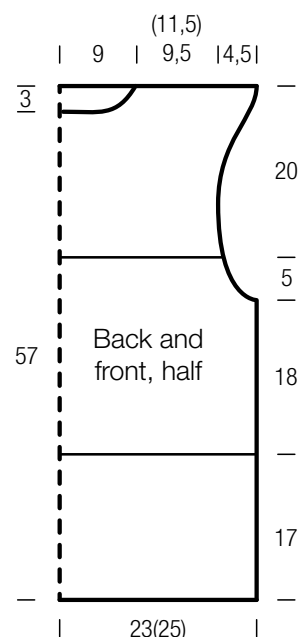
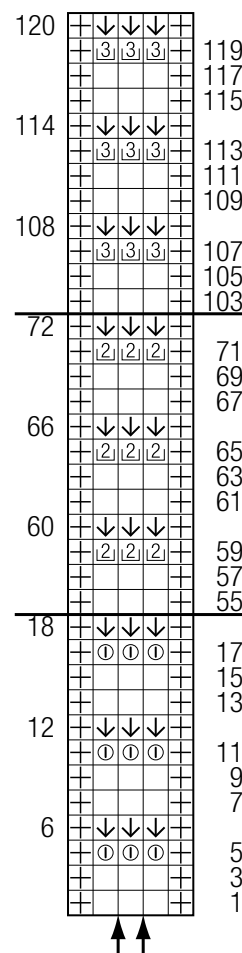


Chart key:

- ⊞ = selvage st
- = k1
- ① = yo, k1
- ② = yo 2 times, k1
- ③ = yo 3 times, k1
- ⬇ = k1, dropping yo(s) and pulling st up to elongate

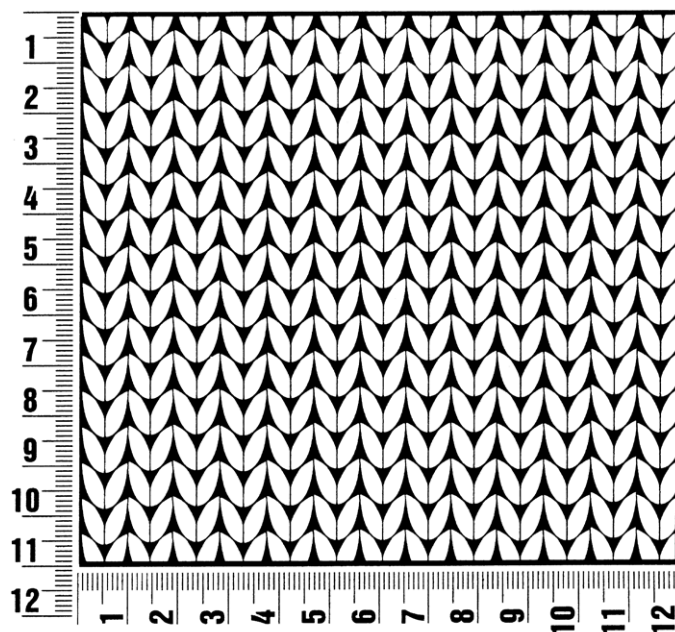
Chart



Gauge Swatch

Before you begin ...

...make a gauge swatch. Use the recommended needles, yarns and pattern stitch for your gauge swatch. It should measure approx. 12 cm x 12 cm. Cast-on and bind-off rows, as well as selvage stitches should not be included in the measurement. Pin your swatch and block it as you would the finished pieces of the garment. Count stitches and rows over 10 cm. If your gauge swatch is too small, switch to larger needles. If your gauge swatch is too big, switch to smaller needles.



Abbreviations

beg = begin(ning) · **ch** = chain · **cont** = continue · **dec** = decreas(e)(ing) · **inc** = increas(e)(ing) · **k** = knit · **kwise** = as if to knit
meas = measures · **M1L** = lift strand between sts from front to back and knit this strand through the back loop · **M1R** = lift strand between sts from the back and knit this strand through the front loop · **patt** = pattern · **pm** = place marker · **p** = purl
pwise = as if to purl · **rem** = remain(ing) · **rep** = repeat(s) · **rev St st** = reverse stockinette stitch · **rnd(s)** = round(s) · **RS** = right side · **sc** = single crochet · **skp** = slip 1 stitch as if to knit, knit 1 stitch, pass slipped stitch over knitted stitch · **sk2p** = slip 1 stitch as if to knit, knit 2 together, pass slipped stitch over knitted stitch · **s2kp** = slip 2 stitches as if to knit, k 1 stitch, pass slipped stitches over knitted stitch · **sl** = slip · **st(s)** = stitch(es) · **St st** = stockinette stitch · **tbl** = through the back loop · **tog** = together · **wyib** = with yarn in back of work · **wyif** = with yarn in front of work · **WS** = wrong side · **yo(s)** = yarn over(s)

Publisher's Info

Publisher: Lana Grossa GmbH, Gaimersheim, www.lanagrossa.com

Photographer: Nicolas Olonetzky, www.olonetzky.com