



www.lanagrossa.com

TOP • ABOUT BERLIN SPOTTY

Design 16 – Filati Journal 61

TOP • ABOUT BERLIN SPOTTY

Design 16 – Filati Journal 61



Size One size

Materials: 200 g of Lana Grossa **About Berlin Spotty** (55% cotton, 26% polyamide, 19% polyester; 125 m/50 g) in Mustard Variegated (**col 3**). Size 3.5 and 4.5 mm needles; one set size 4.5 mm double-pointed needles [dpns]; size 3.5 mm crochet hook.

Selvage stitches: On every row: Sl first st kwise, k last st.

Rib patt: K2, p2.

Lace patt: Work according to chart. Numbers at right edge of chart indicate RS rows; on WS rows purl all sts and yos. Work to patt rep, work 12 sts between arrows for patt rep, work to end of chart. Work rows 1 – 16 once, then rep rows 7 – 16.

St st in rnds: K every rnd.

Note: When working shaping, make sure each yo is paired with a decrease and vice versa.

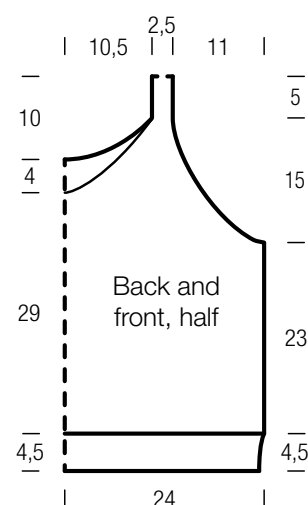
Gauge: 20.5 sts and 26 rows = 10 x 10 cm in lace patt on size 4.5 mm needles.

Front: With size 3.5 mm needles cast on 98 sts. Next row (WS): Selvage st, p1, * k2, p2; rep from * to last 4 sts, k2, p1, selvage st. Work in rib patt as set by last row for a total of 15

rows and piece meas 4.5 cm from cast-on, increasing 1 st at end of last WS row = 99 sts. Change to size 4.5 mm needles. Work lace patt according to chart for 60 rows and piece meas 23 cm from end of rib patt. Shape armholes and neck: At each armhole edge, bind off 3 sts 1 time, 2 sts 3 times, 1 st 14 times. At same time when 26 rows have been worked from beg of armhole shaping and armhole meas 10 cm, shape neck as foll: Next row (RS): Bind off center 13 sts. Working each side separately, bind off 3 sts at each neck edge 5 times = 5 sts rem for each strap after armhole and neck shaping. Strap: K1fbf in first st, k1f&b in next 3 sts, k1fbf in last st = 12 sts. Arrange sts evenly on 3 dpns = 4 sts per needle, place beg of rnd marker and join for working in rnds. Work St st in rnds for 24 rnds = 10 cm. Place sts on holder.

Back: Work same as front until 16 rows have been worked from beg of armhole shaping and armhole meas 6 cm. Shape neck: Next row (RS): Bind off center 3 sts. Working each side separately, bind off 2 sts at each neck edge 10 times = 5 sts rem each side after armhole and neck shaping. Place sts on holders.

Finishing: Pin pieces to measurements and block. Sew side seams. Fold strap sts in half and with sts held double, graft to held sts at back. Neck and armhole edging: With size 3.5 mm crochet hook, work 1 rnd sc, 1 rnd rev sc [work sc from left to right] around neck edge and around each armhole edge.



Chart

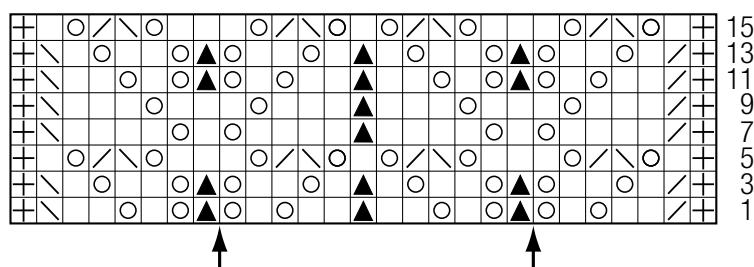


Chart key:

- ⊞ = selvage st
- = k1
- = yo
- ▤ = k2tog
- ▥ = skp: sl 1 kwise, k1, pass slipped st over knitted st
- ▲ = s2kp: sl 2 kwise, k1, pass slipped sts over knitted st

Gauge Swatch

Before you begin ...

...make a gauge swatch. Use the recommended needles, yarns and pattern stitch for your gauge swatch. It should measure approx. 12 cm x 12 cm. Cast-on and bind-off rows, as well as selvage stitches should not be included in the measurement. Pin your swatch and block it as you would the finished pieces of the garment. Count stitches and rows over 10 cm. If your gauge swatch is too small, switch to larger needles. If your gauge swatch is too big, switch to smaller needles.



Abbreviations

beg = begin(ning) · **ch** = chain · **cont** = continue · **dec** = decreas(e)(ing) · **inc** = increas(e)(ing) · **k** = knit · **kwise** = as if to knit
meas = measures · **M1L** = lift strand between sts from front to back and knit this strand through the back loop · **M1R** = lift strand between sts from the back and knit this strand through the front loop · **patt** = pattern · **pm** = place marker · **p** = purl
pwise = as if to purl · **rem** = remain(ing) · **rep** = repeat(s) · **rev St st** = reverse stockinette stitch · **rnd(s)** = round(s) · **RS** = right side · **sc** = single crochet · **skp** = slip 1 stitch as if to knit, knit 1 stitch, pass slipped stitch over knitted stitch · **sk2p** = slip 1 stitch as if to knit, knit 2 together, pass slipped stitch over knitted stitch · **s2kp** = slip 2 stitches as if to knit, k 1 stitch, pass slipped stitches over knitted stitch · **sl** = slip · **st(s)** = stitch(es) · **St st** = stockinette stitch · **tbl** = through the back loop · **tog** = together · **wyib** = with yarn in back of work · **wyif** = with yarn in front of work · **WS** = wrong side · **yo(s)** = yarn over(s)

Publisher's Info

Publisher: Lana Grossa GmbH, Gaimersheim, www.lanagrossa.com

Photographer: Nicolas Olonetzky, www.olonetzky.com