



[www.lanagrossa.com](http://www.lanagrossa.com)

**PULLOVER •**  
**ABOUT BERLIN VANITY & SOLO LINO**  
Design 31 – Filati Journal 61



# PULLOVER •

## ABOUT BERLIN VANITY & SOLO LINO

### Design 31 – Filati Journal 61



**Size** One size

**Materials:** **100 g each** of Lana Grossa **About Berlin Vanity** (54% cotton, 21% viscose, 13% silk, 12% polyamide; 130 m/50 g) in Grey Blue/Lind Green/Rose/Pink/Natural variegated (**col 8**), Red/Orange/Rust variegated (**col 2**) and Green/Jeans/Pastel Pink/Natural variegated (**col 5**); **100 g each** of Lana Grossa **Solo Lino** (80% recycled linen [viscose], 20% linen; 120 m/50 g) in Greige (**col 2**), Salmon (**col 43**) and Lind Green (**col 19**). Size 4 mm needles; size 3.5 mm circular needle, 50 cm long.

**Selvage stitches:** On every row: Sl first st kwise, k last st.

**Main patt:** Work according to chart. Numbers at right edge of chart indicate RS rows; on WS rows purl all sts. Letters with numbers at right edge of chart indicate yarn and col used: **ABV8** = About Berlin Vanity col 8; **ABV2** = About Berlin Vanity col 2; **ABV5** = About Berlin Vanity col 5; **SL2** = Solo Lino Greige; **SL43** = Solo Lino Salmon; **SL19** = Solo Lino Lind Green. Work to patt rep, work 14 sts between arrows for patt rep, work to end of chart. Work rows 1 – 40 once, then rep rows 5 – 40.

**Rib patt:** K1, p1.

**Gauge:** 23.5 sts and 23.5 rows = 10 x 10 cm in main patt on size 4 mm needles.

**Back:** With size 4 mm needles and About Berlin Vanity Grey Blue/Lind Green/Rose/Pink/Natural variegated (col 8) cast on 115 sts. Knit 1 WS row. Work chart for 86 rows = 36.5 cm. Shape sleeves: With Solo Lino Greige, cast on 98 sts at beg of next 2 rows = 311 sts. Work cast-on sts into patt. Work chart for 36 rows and sleeve meas 16 cm. Shape neck: Next row (RS): Bind off center 35 sts. Working each side separately, bind off 6 sts at each neck edge 1 time, 4 sts 1 time and when piece meas 2.5 cm from beg of neck shaping, bind off rem 128 sts for each shoulder/overarm.

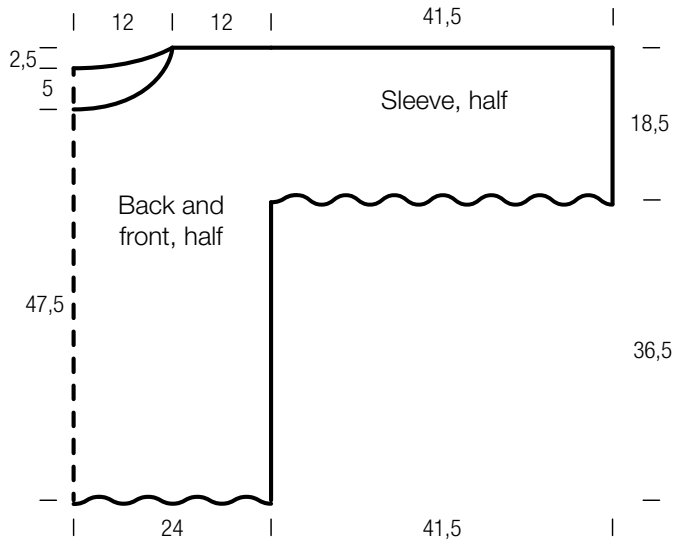
**Front:** Work same as back until same length as back to sleeves. Shape sleeves same as for back. Work cast sts into patt. Work chart for 25 rows and sleeve meas 11 cm. Shape neck: Next row (RS): Bind off center 25 sts. Working each side separately, bind off 4 sts at each neck edge 1 time, 3 sts 1 time, 2 sts 3 times, 1 st 2 times and when same length as back to shoulders, bind off rem 128 sts for each shoulder/overarm.

**Finishing:** Pin pieces to measurements and block. Sew shoulder/overarm seams. Sleeve bands: With size 3.5 mm circular needle and Solo Lino Greige, pick up and k 56 sts along bottom edge of sleeve. Work in rib patt for 1.5 cm. Bind off all sts in rib. Sew side and sleeve seams. Neckband: With size 3.5 mm circular needle and Solo Lino Greige, pick up and k 116 sts evenly around neck edge. Place beg of rnd marker and join for working in rnds. Work rib patt in rnds for 1.5 cm. Bind off all sts in rib.

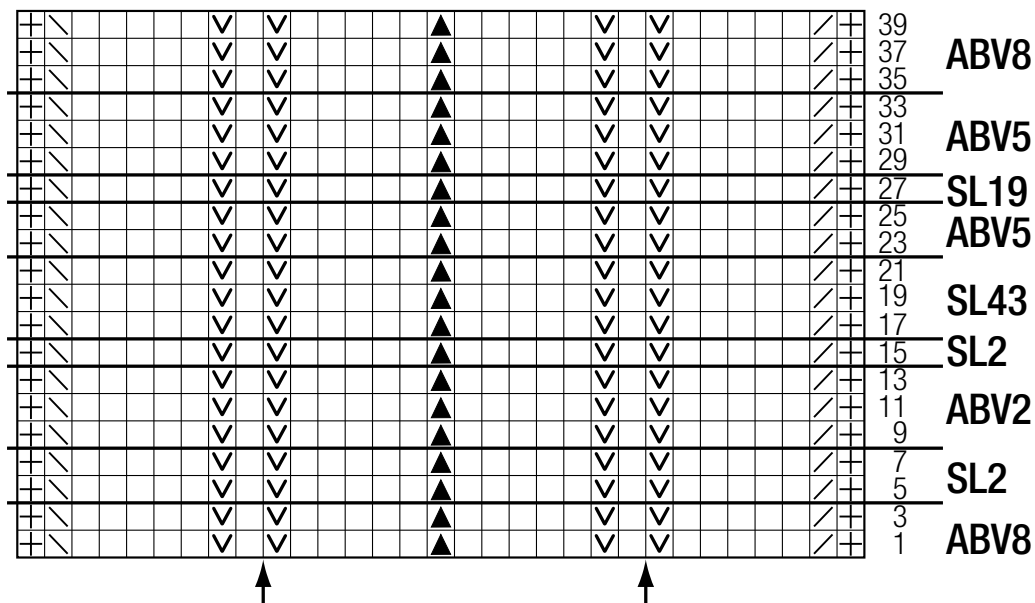
# PULLOVER •

## ABOUT BERLIN VANITY & SOLO LINO

### Design 31 – Filati Journal 61



Chart



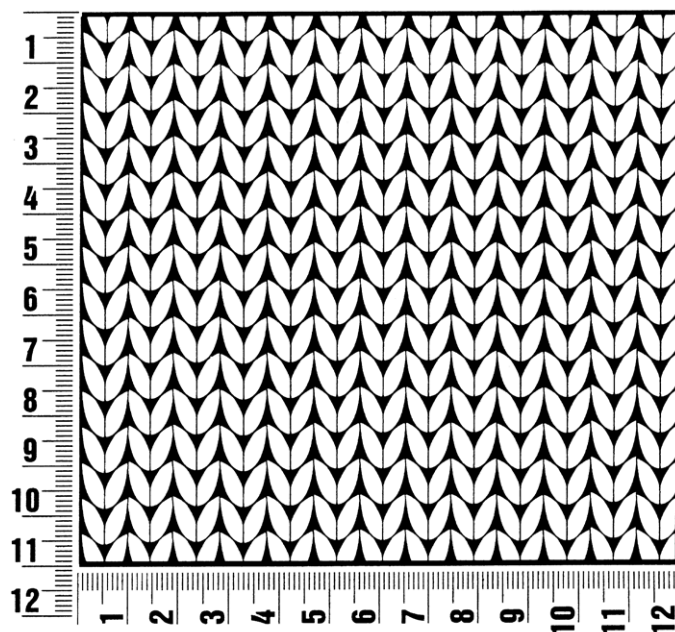
#### Chart key:

- ⊕ = selvage st
- = k1
- ▧ = k2tog
- ◻ = skp: sl 1 kwise, k1, pass slipped st over knitted st
- ▲ = s2kp: sl 2 kwise, k1, pass slipped sts over knitted st
- ▼ = M1R

## Gauge Swatch

### Before you begin ...

...make a gauge swatch. Use the recommended needles, yarns and pattern stitch for your gauge swatch. It should measure approx. 12 cm x 12 cm. Cast-on and bind-off rows, as well as selvage stitches should not be included in the measurement. Pin your swatch and block it as you would the finished pieces of the garment. Count stitches and rows over 10 cm. If your gauge swatch is too small, switch to larger needles. If your gauge swatch is too big, switch to smaller needles.



## Abbreviations

**beg** = begin(ning) · **ch** = chain · **cont** = continue · **dec** = decreas(e)(ing) · **inc** = increas(e)(ing) · **k** = knit · **kwise** = as if to knit  
**meas** = measures · **M1L** = lift strand between sts from front to back and knit this strand through the back loop · **M1R** = lift strand between sts from the back and knit this strand through the front loop · **patt** = pattern · **pm** = place marker · **p** = purl  
**pwise** = as if to purl · **rem** = remain(ing) · **rep** = repeat(s) · **rev St st** = reverse stockinette stitch · **rnd(s)** = round(s) · **RS** = right side · **sc** = single crochet · **skp** = slip 1 stitch as if to knit, knit 1 stitch, pass slipped stitch over knitted stitch · **sk2p** = slip 1 stitch as if to knit, knit 2 together, pass slipped stitch over knitted stitch · **s2kp** = slip 2 stitches as if to knit, k 1 stitch, pass slipped stitches over knitted stitch · **sl** = slip · **st(s)** = stitch(es) · **St st** = stockinette stitch · **tbl** = through the back loop · **tog** = together · **wyib** = with yarn in back of work · **wyif** = with yarn in front of work · **WS** = wrong side · **yo(s)** = yarn over(s)

### Publisher's Info

**Publisher:** Lana Grossa GmbH, Gaimersheim, [www.lanagrossa.com](http://www.lanagrossa.com)

**Photographer:** Nicolas Olonetzky, [www.olonetzky.com](http://www.olonetzky.com)