



www.lanagrossa.com

VEST · FOURSEASON & PER FORTUNA

Design 02 – About Berlin 09

VEST ·

FOURSEASON & PER FORTUNA

Design 02 – About Berlin 09



Size 36/38 (40/42)

Instructions are given for smaller size. Figure in parenthesis refers to larger size. When only one figure is given, it applies to both sizes.

Materials: **200 (250) g** of Lana Grossa **Fourseason** (45% superfine organic Merino wool, 40% organic cotton, 15% recycled cashmere; 105 m/50 g) in Off White (**col 12**) and **200 (250) g** of Lana Grossa **Per Fortuna** (74% organic cotton, 26% polyamide; 190 m/50 g) in Ecru (**col 8**). Size 6 mm needles; size 5 mm crochet hook.

Note: Work with single strand Fourseason or 2 strands Per Fortuna held tog throughout.

Selvage stitches: On every row: Sl first st kwise, k last st.

Two-stitch selvage: On RS row, k1, sl 1 pwise wyib, work to last 2 sts, sl 1 pwise wyib, k1. On WS row, sl 1 pwise wyif, p1, work to last 2 sts, p1, sl 1 pwise wyif.

Rib patt: On RS row, k1tbl, p1; on WS row, work sts as they appear. Sts that are worked tbl on RS rows are also worked tbl on WS rows.

Rev St st: P on RS, k on WS.

St st: K on RS, p on WS.

Seed stitch: Row 1: K1, p1. Row 2: Purl the knit sts and knit the purl sts. Rep row 2 for seed st.

Chart A/B and C/D: Numbers at left edge of charts indicate WS rows, numbers at right edge of charts indicate RS rows. Charts begin with a WS row. Work to patt rep, work 2 sts between arrows for patt rep, work to end of chart. For **rib patt**, work rows 1 – 3 of chart A (C) once, then rep rows 2 and 3; for **brioche rib**, work rows 1 – 3 of chart B (D) once, then rep rows 2 and 3. **Note:** 1 stitch and 1 yo are treated as 1 stitch.

Full-fashion decrease: At beg of RS row, two-stitch selvage, p2tog; at end of RS row, work to last 4 sts, p2tog, two-stitch selvage. On foll WS row: Two-stitch selvage, 1 st in rev St st, work to last 3 sts, 1 st in rev St st, two-stitch selvage.

Gauges: With size 6 mm needles and single strand Fourseason or 2 strands Per Fortuna held tog: 17 sts and 22 rows = 10 x 10 cm in St st; 17 sts and 28 rows = 10 x 10 cm in seed st; 16 sts and 36 rows = 10 x 10 cm in brioche rib.

Back: With size 6 mm needles and single strand Fourseason cast on 83 (91) sts. Next row (WS): Selvage st, * k1, p1tbl; rep from * to last 2 sts, k1, selvage st. Work in rib patt as set by last row for a total of 11 rows and piece meas 5 cm from cast-

on. Maintaining selvage sts, work in St st for 40 (44) rows = 18 (20) cm. Shape armholes: Working full-fashion dec, dec 1 st at each end of next 5 RS rows = 73 (81) sts. Maintaining two-stitch selvage and 1 st in rev St st at each edge, cont in St st until 44 (46) rows have been worked from beg of armhole shaping and armhole meas 20 (21) cm. Bind off all sts. Mark center 31 sts for neck. **NOTE:** Back is 4 cm shorter than fronts. This moves the shoulder line towards the back.

Left front: With size 6 mm needles and 2 strand Per Fortuna held tog cast on 40 (44) sts. Beg and end with a WS row, work chart A for 11 rows and piece meas 5 cm from cast-on. Work chart B for 62 (68) rows = 17 (19) cm. Break Per Fortuna, join Fourseason. Next row (RS): Selvage st, work seed st to last 4 sts, increasing 2 sts evenly = 37 (41) sts in seed st, p2tog, two-stitch selvage = 41 (45) sts. Cont in seed st, work full-fashion dec at neck edge every alt RS row 15 times. At same time, when 4 rows = 1 cm have been worked in seed st, work armhole shaping at right edge same as for back and when 68 (70) rows have been worked from beg of armhole shaping and armhole meas 24 (25) cm, bind off rem 21 (25) shoulder sts.

Right front: With size 6 mm needles and single strand Fourseason cast on 40 (44) sts. Beg and end with a WS row, work chart C for 11 rows and piece meas 5 cm from cast-on. Work chart D for 62 (68) rows = 17 (19) cm. Shape neck: Working full-fashion dec, dec 1 st at beg of next RS row, then every alt RS row 14 times. At same time, when chart D has been worked for 66 (72) rows = 18 (20) cm, shape armhole at left edge same as for back. Maintaining two-stitch selvage and 1 st in rev St st at armhole edge, cont chart D until 36 (40) rows have been worked from beg of armhole shaping and armhole meas 10 (11) cm. Break Fourseason, join 2 strands Per Fortuna. Next row (RS): Work sts worked in chart D in St st, increasing 1 st. Maintaining two-stitch selvage and 1 st in rev St st at armhole edge and continuing to work full-fashion decs for neck shaping, cont in St st for 29 rows and 14 cm have been worked in St st. Bind off rem 21 (25) shoulder sts.

Overlay, right front shoulder: With size 6 mm needles and 2 strands Per Fortuna held tog cast on 27 (31) sts. Next row (WS): Two-stitch selvage, 1 st in rev St st, work St st to last 3 sts, 1 st in rev St st, two-stitch selvage. Cont in patt as set by last row and working full-fashion dec, dec 1 st at beg of 2nd, 6th, 8th, 12th, 14th and 18th row = 21 (25) sts. Work even until a total of 31 rows has been worked and piece meas 14 cm from cast-on. Bind off all sts.

Finishing: Pin pieces to measurements and block. Sew shoulder seams, taking bound-off edge of overlay into right shoulder seam. If desired, tack down corners of overlay. Sew side seams. With size 5 mm crochet hook, sl st along back neck edge.

VEST .

FOURSEASON & PER FORTUNA

Design 02 – About Berlin 09



Charts A/B, C/D

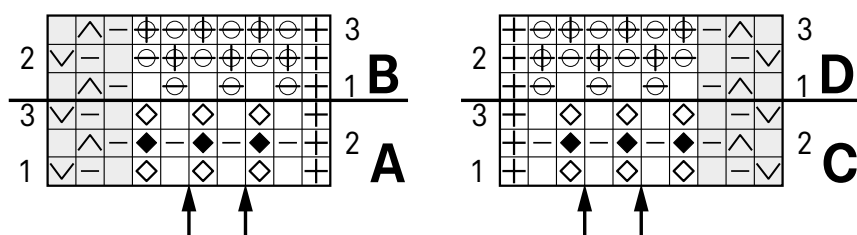
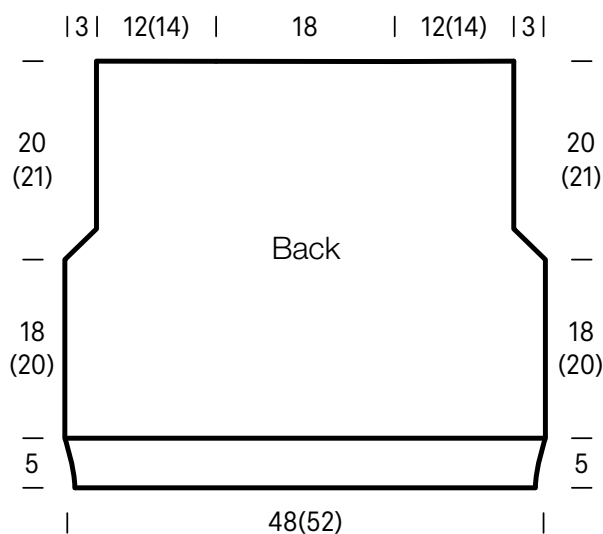
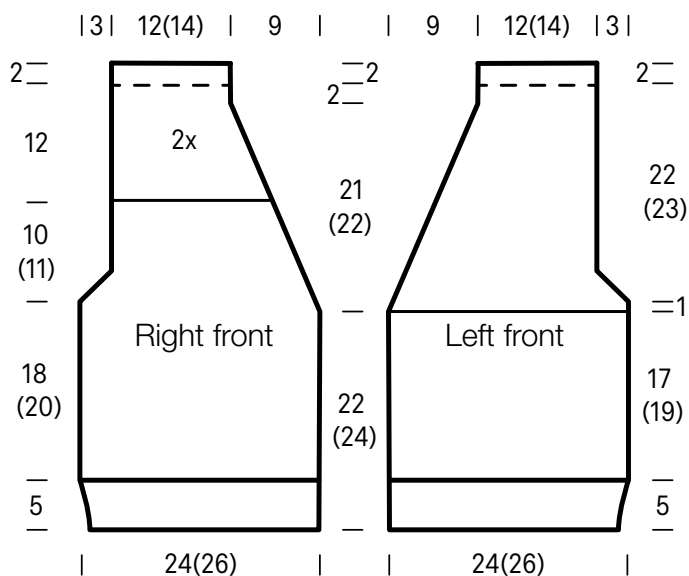


Chart key:

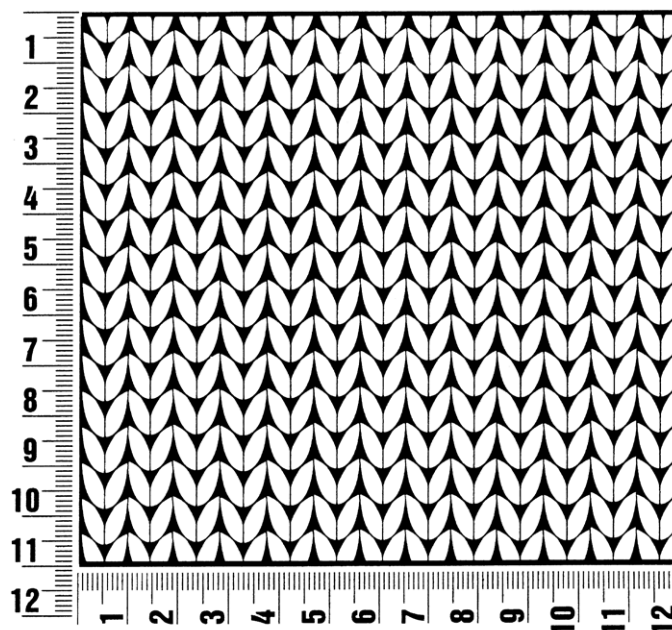
- ⊕ = selvage st
- = k1
- ▢ = p1
- ⊖ = make a yo, then sl next st pwise
- ⊗ = ktog slipped st with its yo
- ◆ = k1tbl
- ◇ = p1tbl
- ▽ = sl 1 pwise wyif
- △ = sl 1 pwise wyib



Gauge Swatch

Before you begin ...

...make a gauge swatch. Use the recommended needles, yarns and pattern stitch for your gauge swatch. It should measure approx. 12 cm x 12 cm. Cast-on and bind-off rows, as well as selvage stitches should not be included in the measurement. Pin your swatch and block it as you would the finished pieces of the garment. Count stitches and rows over 10 cm. If your gauge swatch is too small, switch to larger needles. If your gauge swatch is too big, switch to smaller needles.



Abbreviations

beg = begin(ning) · **ch** = chain · **cont** = continue · **dec** = decreas(e)(ing) · **inc** = increas(e)(ing) · **k** = knit · **kwise** = as if to knit
meas = measures · **M1L** = lift strand between sts from front to back and knit this strand through the back loop · **M1R** = lift strand between sts from the back and knit this strand through the front loop · **patt** = pattern · **pm** = place marker · **p** = purl
pwise = as if to purl · **rem** = remain(ing) · **rep** = repeat(s) · **rev St st** = reverse stockinette stitch · **rnd(s)** = round(s) · **RS** = right side · **sc** = single crochet · **skp** = slip 1 stitch as if to knit, knit 1 stitch, pass slipped stitch over knitted stitch · **sk2p** = slip 1 stitch as if to knit, knit 2 together, pass slipped stitch over knitted stitch · **s2kp** = slip 2 stitches as if to knit, k 1 stitch, pass slipped stitches over knitted stitch · **sl** = slip · **st(s)** = stitch(es) · **St st** = stockinette stitch · **tbl** = through the back loop · **tog** = together · **wyib** = with yarn in back of work · **wyif** = with yarn in front of work · **WS** = wrong side · **yo(s)** = yarn over(s)

Publisher's Info

Publisher: Lana Grossa GmbH, Gaimersheim, www.lanagrossa.com

Photographer: Yannick Schütte