



[www.lanagrossa.com](http://www.lanagrossa.com)

**JACKET · ALLORA HAND-DYED**  
Design 01 – Hand-dyed 02

# JACKET · ALLORA HAND-DYED

## Design 01 – Hand-dyed 02



**Size** 36/38 (40/42, 44)

Instructions are given for first size. Figures in parenthesis refer to larger sizes. When only one figure is given, it applies to all sizes.

**Materials:** 200 (250, 250) g of Lana Grossa **Allora hand-dyed** (76% cotton, 14% superfine Merino wool, 10% baby alpaca; 300 m/50 g) in Angoor (**col 256**). Size 5 mm needles; size 4 mm circular needle, 120 cm long; size 3.5 mm crochet hook.

**Rib patt:** P2, k2.

**Mesh stitch:** Multiple of 3 + 1. Work according to chart. Numbers at right edge of chart indicate RS rows, numbers at left edge of chart indicate WS rows. Rep rows 1 – 4 for mesh st.

**Slip stitch selvage:** On RS row, ktbl first st, sl last st pwise wyib; on WS row, ptbl first st, sl last st pwise wyif.

**Gauge:** 21 sts and 28 rows = 10 x 10 cm in mesh st on size 5 mm needles.

**Back and fronts:** Worked in one piece, starting at lower edge of back with 2 fronts joined at the shoulders and worked separately down to lower edge. With size 5 mm needles cast on 138 (144, 150) sts. Purl 1 WS row. Next row (RS): Selvage st (k on RS, p on WS); work chart over next 136 (142, 148) sts = work to patt rep; work patt rep 44 (46, 48) times, work to end of chart; selvage st (k on RS, p on WS). NOTE: Selvage sts are not included on chart. Maintain-

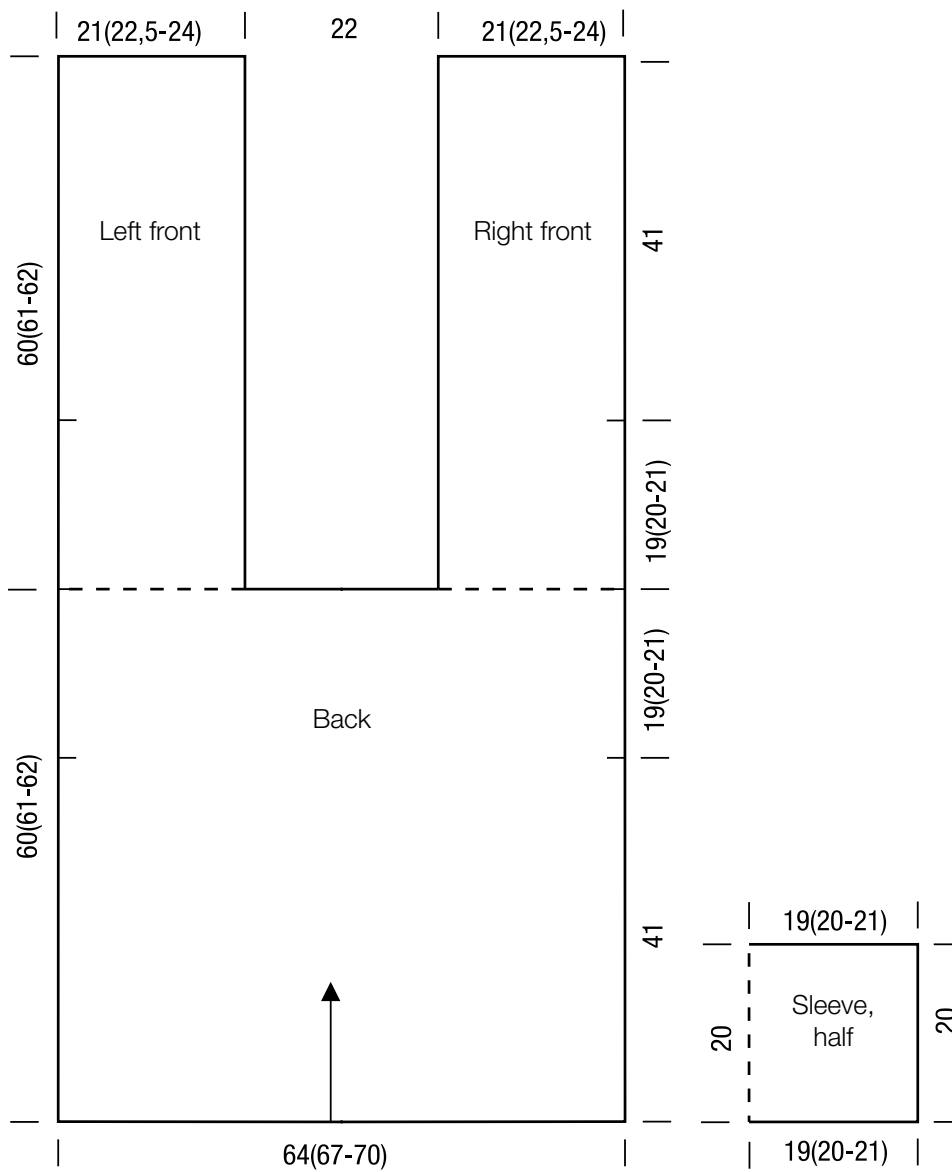
ing selvage sts, cont to foll chart until piece meas 41 cm from cast-on. Place marker in first and last st on last WS row to indicate beg of armholes. Cont chart until piece meas 60 (61, 62) cm from cast-on, ending with a WS row. Divide for fronts: Next row (RS): Patt over 45 (48, 51) sts and place on holder, bind off next 48 sts, patt to end. **Left front:** Working a slip st selvage at front edge, cont chart across 45 (48, 51) left front sts until piece meas 19 (20, 21) cm from divide. Place marker to indicate beg of armhole. Cont chart until piece meas 60 (61, 62) cm from divide. Bind off all sts. **Right front:** Return 45 (48, 51) held sts to needle and with WS facing, rejoin yarn. Complete as given for left front.

**Sleeves:** With size 5 mm needles cast on 84 (87, 90) sts. Purl 1 WS row. Next row (RS): Selvage st (k on RS, p on WS); work chart over next 82 (85, 88) sts = work to patt rep; work patt rep 26 (27, 28) times, work to end of chart; selvage st (k on RS, p on WS). NOTE: Selvage sts are not included on chart. Maintaining selvage sts, cont to foll chart until piece meas 20 cm from cast-on. Bind off all sts.

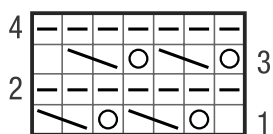
**Finishing:** Pin pieces to measurements and block. **Front and neckband:** With size 3.5 mm crochet hook, sc along right front, back neck and left front edge. Fasten off. With size 4 mm circular needle and RS facing, pick up and k 124 (126, 128) sts along right front, 48 sts along back neck and 124 (126, 128) sts along left front edge = 296 (300, 304) sts. Next row (WS): Slip st selvage, p2, \* k2, p2; rep from \*, end slip st selvage. Cont in rib patt as set by last row until band meas 11 cm. Bind off all sts in rib. With size 3.5 mm crochet hook, sc along bottom edge of jacket. Sew on sleeves between markers. Sew side and sleeve seams.

# JACKET · ALLORA HAND-DYED

## Design 01 – Hand-dyed 02



**Chart**



↑ ↑  
3-st rep

**Chart key:**

- = k1
- ▣ = p1
- ⊙ = yo
- ▤ = sl 1 kwise, k2, pass slipped st over k2 sts

## Gauge Swatch

### Before you begin ...

...make a gauge swatch. Use the recommended needles, yarns and pattern stitch for your gauge swatch. It should measure approx. 12 cm x 12 cm. Cast-on and bind-off rows, as well as selvage stitches should not be included in the measurement. Pin your swatch and block it as you would the finished pieces of the garment. Count stitches and rows over 10 cm. If your gauge swatch is too small, switch to larger needles. If your gauge swatch is too big, switch to smaller needles.



## Abbreviations

**beg** = begin(ning) · **ch** = chain · **cont** = continue · **dec** = decreas(e)(ing) · **inc** = increas(e)(ing) · **k** = knit · **kwise** = as if to knit  
**meas** = measures · **M1L** = lift strand between sts from front to back and knit this strand through the back loop · **M1R** = lift strand between sts from the back and knit this strand through the front loop · **patt** = pattern · **pm** = place marker · **p** = purl  
**pwise** = as if to purl · **rem** = remain(ing) · **rep** = repeat(s) · **rev St st** = reverse stockinette stitch · **rnd(s)** = round(s) · **RS** = right side · **sc** = single crochet · **skp** = slip 1 stitch as if to knit, knit 1 stitch, pass slipped stitch over knitted stitch · **sk2p** = slip 1 stitch as if to knit, knit 2 together, pass slipped stitch over knitted stitch · **s2kp** = slip 2 stitches as if to knit, k 1 stitch, pass slipped stitches over knitted stitch · **sl** = slip · **st(s)** = stitch(es) · **St st** = stockinette stitch · **tbl** = through the back loop · **tog** = together · **wyib** = with yarn in back of work · **wyif** = with yarn in front of work · **WS** = wrong side · **yo(s)** = yarn over(s)

### Publisher's Info

**Publisher:** Lana Grossa GmbH, Gaimersheim, [www.lanagrossa.com](http://www.lanagrossa.com)

**Photographer:** Wilfried Wulff, [www.wilfriedwulff.com](http://www.wilfriedwulff.com)