



[www.lanagrossa.com](http://www.lanagrossa.com)



# CROCHET SHIRT · ALLORA HAND-DYED

Design 17 – Hand-dyed 02

# CROCHET SHIRT · ALLORA HAND-DYED

## Design 17 – Hand-dyed 02



**Size** 36/38 (40/42, 44)

Instructions are given for first size. Figures in parenthesis refer to larger sizes. When only one figure is given, it applies to all sizes.

**Materials:** 250 (300, 300) g of Lana Grossa **Allora hand-dyed** (76% cotton, 14% superfine Merino wool, 10% baby alpaca; 300 m/50 g) in Neem (**col 251**). Size 3.5 mm crochet hook.

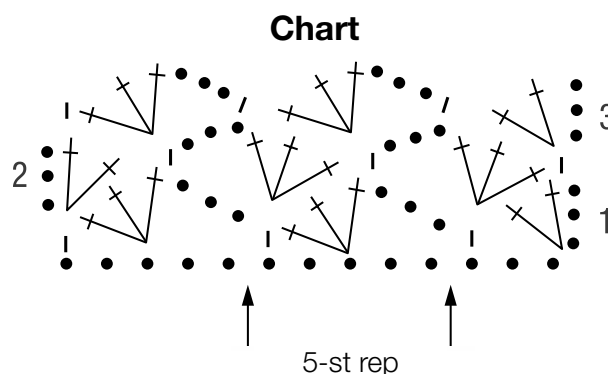
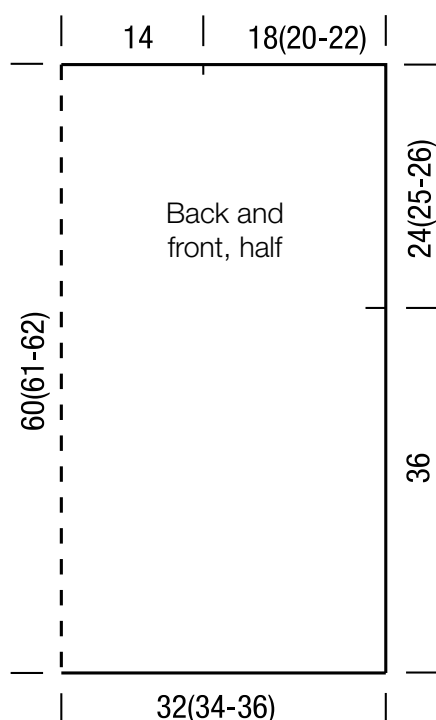
**Main patt:** Multiple of 5 + 3 + 3. Work according to chart. Numbers at right edge of chart indicate RS rows, number at left edge of chart indicates WS row. Work rows 1 – 3 once, then rep rows 2 and 3.

**Gauge:** 21 sts and 13 rows = 10 x 10 cm in main patt with size 3.5 mm hook.

**Back:** With size 3.5 mm hook, ch 138 (148, 158) + ch 3. Work row 1 of chart: Work to patt rep, work patt rep 26 (28, 30), work to end of chart. Cont to foll chart until piece meas 36 cm from beg. Place marker at each edge to indicate beg of armholes. Cont chart until piece meas 60 (61, 62) cm from beg. Fasten off.

**Front:** Work same as back.

**Finishing:** Pin pieces to measurements and block. Sew shoulder seams, leaving center 28 cm open for neck. Sew side seams to armhole markers.



**Chart key:**

● = chain (ch)

■ = single crochet (sc)

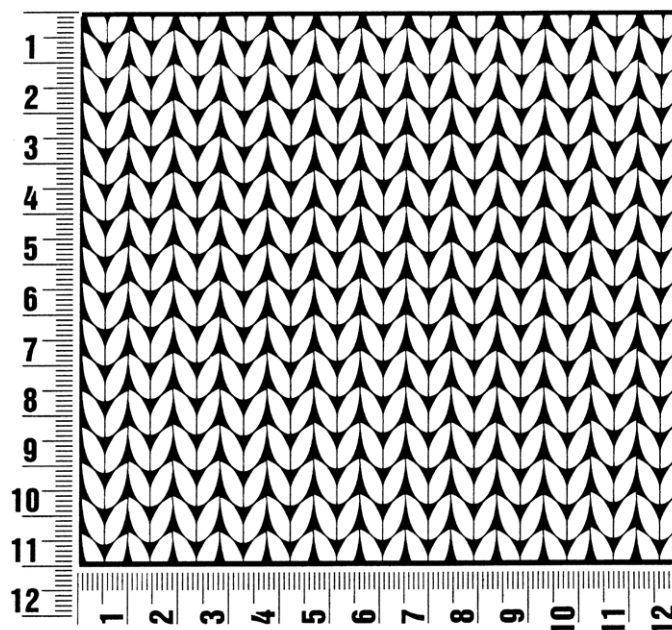
✕† = 2 dc in same st or sp

✕†† = 3 dc in same st or sp

## Gauge Swatch

### Before you begin ...

...make a gauge swatch. Use the recommended needles, yarns and pattern stitch for your gauge swatch. It should measure approx. 12 cm x 12 cm. Cast-on and bind-off rows, as well as selvage stitches should not be included in the measurement. Pin your swatch and block it as you would the finished pieces of the garment. Count stitches and rows over 10 cm. If your gauge swatch is too small, switch to larger needles. If your gauge swatch is too big, switch to smaller needles.



## Abbreviations

**beg** = begin(ning) · **ch** = chain · **cont** = continue · **dec** = decreas(e)(ing) · **inc** = increas(e)(ing) · **k** = knit · **kwise** = as if to knit  
**meas** = measures · **M1L** = lift strand between sts from front to back and knit this strand through the back loop · **M1R** = lift strand between sts from the back and knit this strand through the front loop · **patt** = pattern · **pm** = place marker · **p** = purl  
**pwise** = as if to purl · **rem** = remain(ing) · **rep** = repeat(s) · **rev St st** = reverse stockinette stitch · **rnd(s)** = round(s) · **RS** = right side · **sc** = single crochet · **skp** = slip 1 stitch as if to knit, knit 1 stitch, pass slipped stitch over knitted stitch · **sk2p** = slip 1 stitch as if to knit, knit 2 together, pass slipped stitch over knitted stitch · **s2kp** = slip 2 stitches as if to knit, k 1 stitch, pass slipped stitches over knitted stitch · **sl** = slip · **st(s)** = stitch(es) · **St st** = stockinette stitch · **tbl** = through the back loop · **tog** = together · **wyib** = with yarn in back of work · **wyif** = with yarn in front of work · **WS** = wrong side · **yo(s)** = yarn over(s)

### Publisher's Info

**Publisher:** Lana Grossa GmbH, Gaimersheim, [www.lanagrossa.com](http://www.lanagrossa.com)

**Photographer:** Wilfried Wulff, [www.wilfriedwulff.com](http://www.wilfriedwulff.com)