



[www.lanagrossa.com](http://www.lanagrossa.com)



## **DRESS · PIMA**

Design 09 – Häkeln 03

# DRESS • PIMA

## Design 09 – Häkeln 03



**Size** 36/38 (40/42, 44)

Instructions are given for first size. Figures in parenthesis refer to larger sizes. When only one figure is given, it applies to all sizes.

**Materials:** 550 (600, 650) g of Lana Grossa **Pima** (100% Pima cotton; 125 m/50 g) in Light Reed Green (**col 31**). Size 3.5 and 4 mm crochet hook.

**Main patt:** Multiple of 10 + 1 + 1. Work according to chart 1. Numbers at right edge of chart indicate RS rows, numbers at left edge of chart indicate WS rows. Work rows 1 – 6 once, then rep rows 3 – 6.

**Border patt:** Multiple of 6 + 1. Work according to chart 2. Numbers on chart indicate rnds. Work rnds 1 and 2 once.

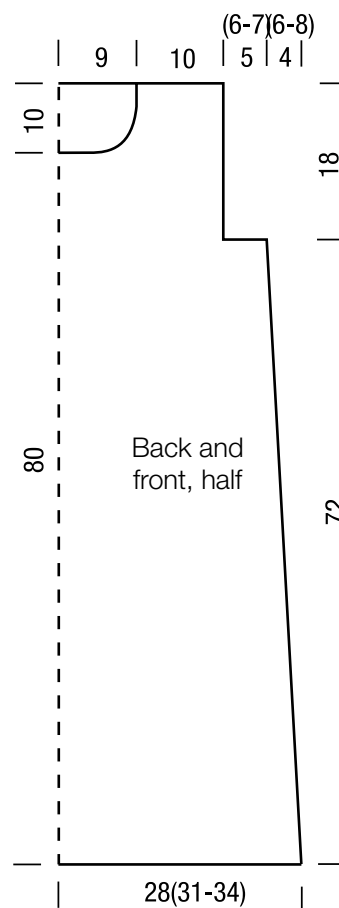
**Gauge:** 16 sts and 10 rows = 10 x 10 cm in main patt with size 4 mm hook.

**Back:** With size 4 mm hook, ch 91 (101, 111) + ch 1. Work row 1 of chart 1: Work to patt rep, work patt rep 7 (8, 9) times, work to end of chart. Cont to foll chart and shape sides as foll: Dec 1 st at each end of 11 (9, 7)th row, then every 10th row 6 times (then every 8th row 4 times, then every 6th row 5 times / then every 6th row 4 times, then every alt 4th and 6th row 8 times) = 77 (81, 85) sts. Work even until piece meas 72 cm from beg. Shape armholes: Leave 8 (10, 12) sts unworked at beg and end of next row = 61 sts. Work even until armhole meas 18 cm, ending with a chart row 3 or 5. Fasten off.

**Front:** Work same as back until armhole meas 8 cm, ending with a chart row 5. Shape neck: Leave center 2 patt reps = ½ pat rep, 1 full patt rep, ½ patt rep (2 patt reps / ½ patt rep, 1 full patt rep, ½ patt rep) unworked. Working each side separately, dec 1 st at each neck edge on next 4 rows = 17 sts. Work even until armhole meas 18 cm. Fasten off.

**Finishing:** Pin pieces to measurements and block. Sew shoulder and side seams. **Bottom border:** With size 4 mm hook, sl st-join yarn in left side seam, ch 1, work 1 rnd of 180 (204, 216) sc around bottom edge of dress, sl st in beg ch-1 to join. Next rnd: Ch 1, work rnd 2 of chart 2 = 30 (34, 36) patt reps; sl st in beg ch-1 to join. Fasten off. **Armhole border:**

With size 4 mm hook, sl st-join yarn in side seam, ch 1, work 1 rnd of 78 (84, 90) sc around armhole edge, sl st in beg ch-1 to join. Next rnd: Ch 1, work rnd 2 of chart 2 = 13 (14, 15) patt reps; sl st in beg ch-1 to join. Fasten off. **Neck border:** With size 4 mm hook, sl st-join yarn in left shoulder seam, ch 1, work 1 rnd of 96 sc around neck edge, sl st in beg ch-1 to join. Next rnd: With size 3.5 mm hook, ch 1, work rnd 2 of chart 2 = 6 patt reps along back neck edge and 10 patt reps along front neck edge = 16 patt reps total; sl st in beg ch-1 to join. Fasten off.

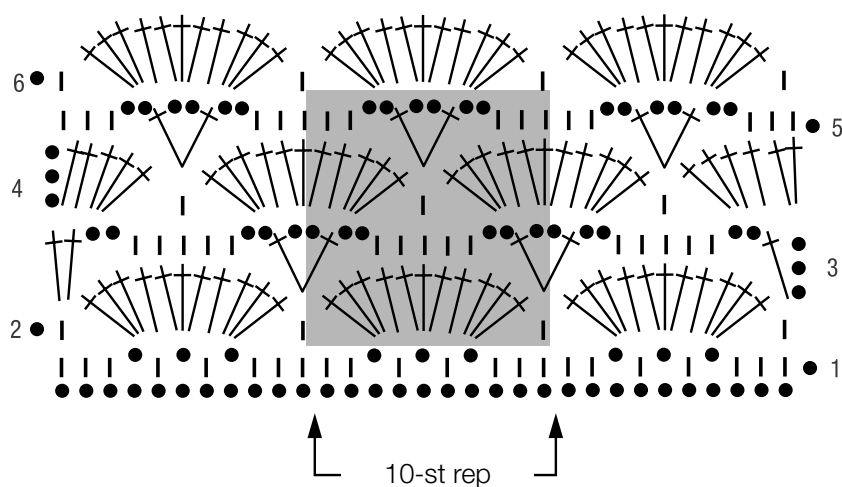


# DRESS · PIMA

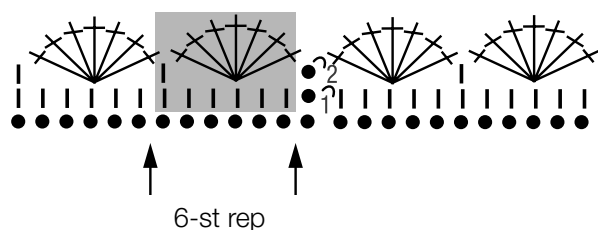
## Design 09 – Häkeln 03



**Chart 1**



**Chart 2**



**Chart key:**

● = chain (ch)

↪ = slip stitch (sl st)

┆ = single crochet (sc)

↑ = double crochet (dc)

↑↑ = 2 dc in indicated st or sp

↑●↑ = [dc, ch 2, dc] in indicated st or sp

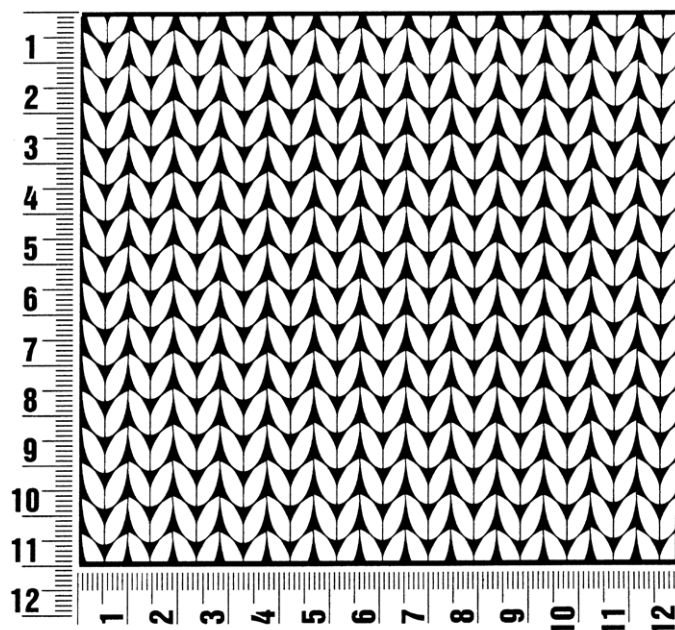
↑↑↑ = 3 dc into ch-sp

↑↑↑↑↑↑↑ = 7 dc in indicated st or sp

## Gauge Swatch

### Before you begin ...

...make a gauge swatch. Use the recommended needles, yarns and pattern stitch for your gauge swatch. It should measure approx. 12 cm x 12 cm. Cast-on and bind-off rows, as well as selvage stitches should not be included in the measurement. Pin your swatch and block it as you would the finished pieces of the garment. Count stitches and rows over 10 cm. If your gauge swatch is too small, switch to larger needles. If your gauge swatch is too big, switch to smaller needles.



## Abbreviations

**beg** = begin(ning) · **ch** = chain · **cont** = continue · **dec** = decreas(e)(ing) · **inc** = increas(e)(ing) · **k** = knit · **kwise** = as if to knit  
**meas** = measures · **M1L** = lift strand between sts from front to back and knit this strand through the back loop · **M1R** = lift strand between sts from the back and knit this strand through the front loop · **patt** = pattern · **pm** = place marker · **p** = purl  
**pwise** = as if to purl · **rem** = remain(ing) · **rep** = repeat(s) · **rev St st** = reverse stockinette stitch · **rnd(s)** = round(s) · **RS** = right side · **sc** = single crochet · **skp** = slip 1 stitch as if to knit, knit 1 stitch, pass slipped stitch over knitted stitch · **sk2p** = slip 1 stitch as if to knit, knit 2 together, pass slipped stitch over knitted stitch · **s2kp** = slip 2 stitches as if to knit, k 1 stitch, pass slipped stitches over knitted stitch · **sl** = slip · **st(s)** = stitch(es) · **St st** = stockinette stitch · **tbl** = through the back loop · **tog** = together · **wyib** = with yarn in back of work · **wyif** = with yarn in front of work · **WS** = wrong side · **yo(s)** = yarn over(s)

### Publisher's Info

**Publisher:** Lana Grossa GmbH, Gaimersheim, [www.lanagrossa.com](http://www.lanagrossa.com)  
**Photographer:** Nicolas Olonetzky, [www.olonetzky.com](http://www.olonetzky.com)