



www.lanagrossa.com

TOP · PIMA

Design 14 – Häkeln 03

TOP · PIMA

Design 14 – Häkeln 03



Size 36 (38, 40)

Instructions are given for first size. Figures in parenthesis refer to larger sizes. When only one figure is given, it applies to all sizes.

Materials: 300 (350, 400) g of Lana Grossa **Pima** (100% Pima cotton; 125 m/50 g) in Sun Yellow (**col 27**). Size 4 mm crochet hook; 2 stitch markers.

Zigzag patt: Multiple of 16. Work in rnds according to chart. Work rnds 1 – 3 once, then rep rnds 2 and 3.

Gauge: 21 sts and 9 rnds = 10 x 10 cm in zigzag patt with size 4 mm hook.

Top: Worked in rnds from the bottom up. With size 4 mm hook, ch 176 (192, 208), sl st in first ch to form ring. Work zigzag patt according to chart = 11 (12, 13) patt reps per rnd, for 27 cm, ending with a chart rnd 1. Place beg of rnd marker to denote left side seam, place side marker after

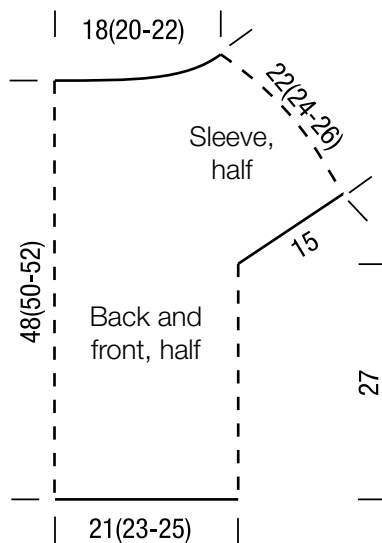
5.5 (6, 6.5) patt reps to denote right side seam. Next rnd (chart rnd 2): Work sleeves: Patt over 5.5 (6, 6.5) patt reps, ch 64 = 4 patt reps for sleeve, patt over next 5.5 (6, 6.5) patt reps, ch 64 = 4 patt reps for sleeve = 304 (320, 336) sts and 19 (20, 21) patt reps. Work 6 (8, 10) rnds even.

Rnd 7 (9, 11): In each patt rep, dc2tog 4th and 5th st and 11th and 12th st = 266 (280, 294) sts. **Rnd 8 (10, 12):** Work even in patt. **Rnd 9 (11, 13):** In each patt rep, dc2tog 3rd and 4th st and 10th and 11th st = 228 (240, 252) sts.

Rnd 10 (12, 14): Work even in patt. **Rnd 11 (13, 15):** In each patt rep, dc2tog first and 2nd st and 8th and 9th st = 190 (200, 210) sts. **Rnds 12 – 15 (14 – 17, 16 – 19):** Work even in patt. **Rnd 16 (18, 20):** Omit ch between dc. **Rnd 17 (19, 21):** Work even in patt. **Rnd 18 (20, 22):** In each patt rep, dc in next 2 dc, ch 3, dc in center dc, dc in next dc.

Rnd 19 (21, 23): 8 dc each patt rep. **Rnd 20 (22, 24):** 8 sc each patt rep. Fasten off. **Tip:** If neck edge is too loose, dec 1 st in each patt rep on last rnd.

Finishing: Pin piece to measurements and block.



Chart

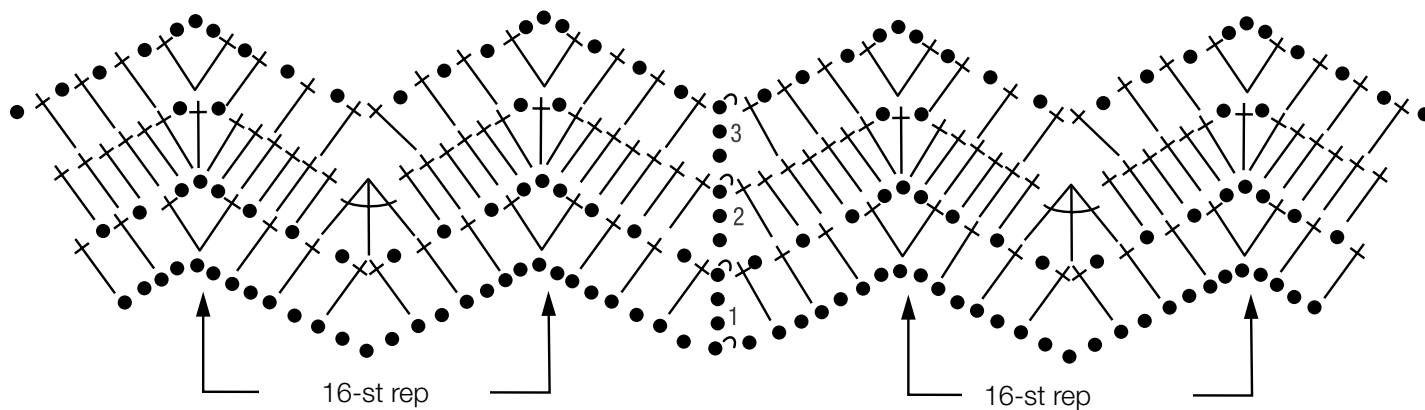


Chart key:

- = chain (ch)
- ~ = slip stitch (sl st)
- ⊥ = double crochet (dc)
- ⋈ = dc2tog
- ⋈ = dc3tog

Gauge Swatch

Before you begin ...

...make a gauge swatch. Use the recommended needles, yarns and pattern stitch for your gauge swatch. It should measure approx. 12 cm x 12 cm. Cast-on and bind-off rows, as well as selvage stitches should not be included in the measurement. Pin your swatch and block it as you would the finished pieces of the garment. Count stitches and rows over 10 cm. If your gauge swatch is too small, switch to larger needles. If your gauge swatch is too big, switch to smaller needles.



Abbreviations

beg = begin(ning) · **ch** = chain · **cont** = continue · **dec** = decreas(e)(ing) · **inc** = increas(e)(ing) · **k** = knit · **kwise** = as if to knit
meas = measures · **M1L** = lift strand between sts from front to back and knit this strand through the back loop · **M1R** = lift strand between sts from the back and knit this strand through the front loop · **patt** = pattern · **pm** = place marker · **p** = purl
pwise = as if to purl · **rem** = remain(ing) · **rep** = repeat(s) · **rev St st** = reverse stockinette stitch · **rnd(s)** = round(s) · **RS** = right side · **sc** = single crochet · **skp** = slip 1 stitch as if to knit, knit 1 stitch, pass slipped stitch over knitted stitch · **sk2p** = slip 1 stitch as if to knit, knit 2 together, pass slipped stitch over knitted stitch · **s2kp** = slip 2 stitches as if to knit, k 1 stitch, pass slipped stitches over knitted stitch · **sl** = slip · **st(s)** = stitch(es) · **St st** = stockinette stitch · **tbl** = through the back loop · **tog** = together · **wyib** = with yarn in back of work · **wyif** = with yarn in front of work · **WS** = wrong side · **yo(s)** = yarn over(s)

Publisher's Info

Publisher: Lana Grossa GmbH, Gaimersheim, www.lanagrossa.com

Photographer: Nicolas Olonetzky, www.olonetzky.com