



www.lana-grossa.com

SHIRT · BACCA

Design 06 – Filati Journal 63

SHIRT · BACCA

Design 06 – Filati Journal 63



Size 36/38 (40/42, 44/46)

Instructions are given for first size. Figures in parenthesis refer to larger sizes. When only one figure is given, it applies to all sizes.

Materials: 350 (400, 450) g of Lana Grossa **Bacca** (100% cotton; 120 m/50 g) in Khaki (**col 4**). Size 4 mm circular needle, 100 cm long; size 3.5 mm crochet hook.

Selvage stitches: On every row: Sl first st kwise, k last st.

Chart patt: Numbers at right edge of chart indicate RS rows, numbers at left edge of chart indicate WS rows. Work to patt rep, work 2 sts between arrows for patt rep, work to end of chart. Rep rows 1 – 4.

Gauge: 20 sts and 22 rows = 10 x 10 cm in chart patt on size 4 mm needles.

Back: Worked side to side. Arrow on schematic shows direction of work. With size 4 mm circular needle cast on 38 (40, 42) sts. Work chart and shape sleeve/side edge and shoulder as foll: For sleeve/side edge shaping, cast on 2 sts at left edge every alt row 21 (22, 23) times, inc 1 st every alt row 14 times, cast on 18 sts 1 time. At same time, for shoulder shaping, inc 1 st at right edge on 5th row from cast-on, then every 6th row 10 (9, 12) times, then every 4th row 5 (8, 5) times = 128 (134, 138) sts after all incs have been worked. Work even for 16 cm and center of back has been reached. Work 2nd half of back same as first have, reversing all shaping, that is: work decs in place of incs. Bind off all sts.

Front: Work same as back.

Finishing: Pin pieces to measurements and block. Sew shoulder and side seams. Using crochet hook, work 1 rnd sl st around neck edge, around each sleeve edge and around bottom edge.

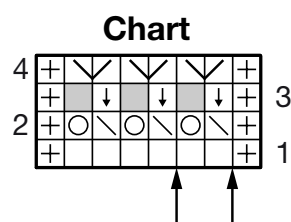
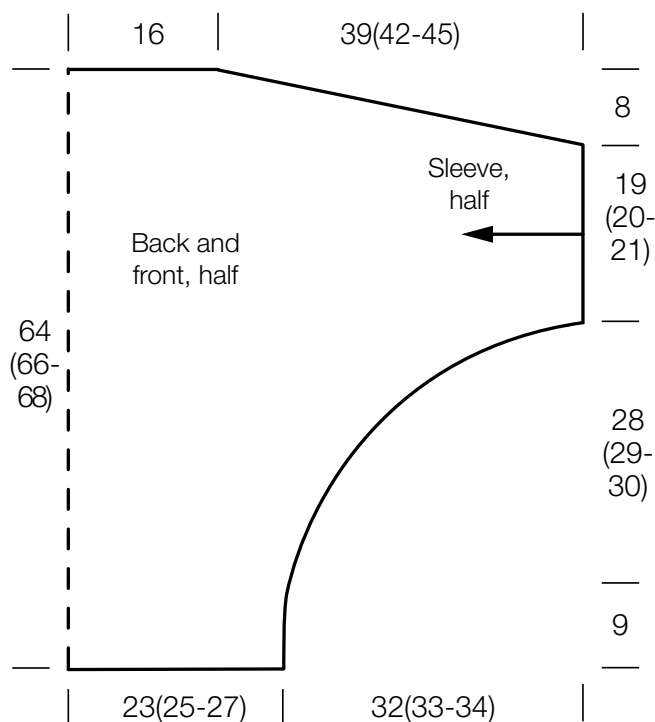


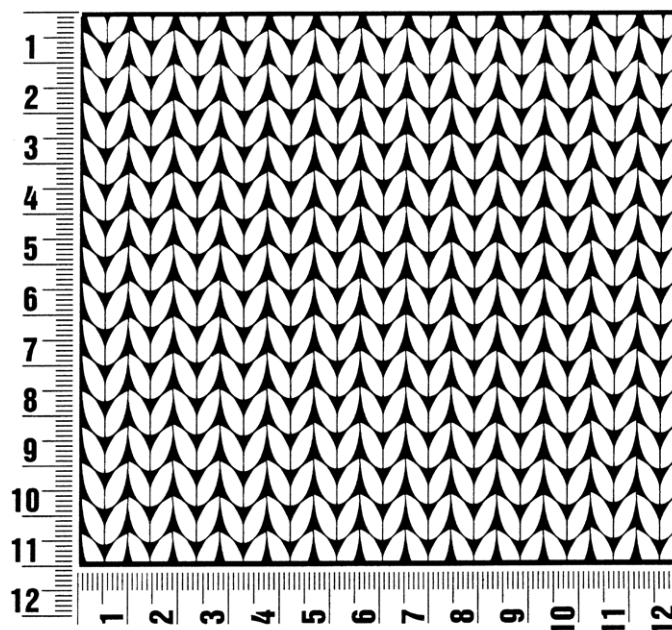
Chart key:

- ⊕ = selvage st
- = k1
- ⊙ = yo
- ⬇ = skp: sl 1 kwise, k1, pass slipped st over knitted st
- ⬇ = k1, dropping yo and pulling st up to elongate
- ⬇ = kf&b
- = represents "no stitch" (included to keep st count correct)

Gauge Swatch

Before you begin ...

...make a gauge swatch. Use the recommended needles, yarns and pattern stitch for your gauge swatch. It should measure approx. 12 cm x 12 cm. Cast-on and bind-off rows, as well as selvage stitches should not be included in the measurement. Pin your swatch and block it as you would the finished pieces of the garment. Count stitches and rows over 10 cm. If your gauge swatch is too small, switch to larger needles. If your gauge swatch is too big, switch to smaller needles.



Abbreviations

beg = begin(ning) · **ch** = chain · **cont** = continue · **dec** = decreas(e)(ing) · **inc** = increas(e)(ing) · **k** = knit · **kwise** = as if to knit
meas = measures · **M1L** = lift strand between sts from front to back and knit this strand through the back loop · **M1R** = lift strand between sts from the back and knit this strand through the front loop · **patt** = pattern · **pm** = place marker · **p** = purl
pwise = as if to purl · **rem** = remain(ing) · **rep** = repeat(s) · **rev St st** = reverse stockinette stitch · **rnd(s)** = round(s) · **RS** = right side · **sc** = single crochet · **skp** = slip 1 stitch as if to knit, knit 1 stitch, pass slipped stitch over knitted stitch · **sk2p** = slip 1 stitch as if to knit, knit 2 together, pass slipped stitch over knitted stitch · **s2kp** = slip 2 stitches as if to knit, k 1 stitch, pass slipped stitches over knitted stitch · **sl** = slip · **st(s)** = stitch(es) · **St st** = stockinette stitch · **tbl** = through the back loop · **tog** = together · **wyib** = with yarn in back of work · **wyif** = with yarn in front of work · **WS** = wrong side · **yo(s)** = yarn over(s)

Publisher's Info

Publisher: Lana Grossa GmbH, Gaimersheim, www.lana-grossa.com

Photographer: Yannik Schütte