



www.lana-grossa.com

JACKET · PIÙ

Design 15 – Filati Journal 63

JACKET • PIÙ

Design 15 – Filati Journal 63



Size 36/38 (40/42, 44/46)

Instructions are given for first size. Figures in parenthesis refer to larger sizes. When only one figure is given, it applies to all sizes.

Materials: **275 (300, 325) g** of Lana Grossa **Più Bella** (59% baby alpaca, 20% polyamide, 15% cashmere, 6% Merino wool; 100 m/25 g) in Off White (**col 1**) and **450 (500, 550) g** of Lana Grossa **Ecco** (65% cotton, 23% silk, 12% viscose; 120 m/50 g) in Natural/Purple/Light Green/Nougat (**col 108**). Size 7 and 8 mm needles; three 22 mm mother-of-pearl buttons.

Note: Work with 1 strand of each yarn held tog throughout = 2 strands held tog.

Selvage stitches: On every row: Sl first st kwise, k last st.

Two-stitch selvage: On RS row, k1, sl 1 pwise wyib, patt to last 2 sts, sl 1 pwise wyib, k1. On WS row, sl 1 pwise wyif, p1, patt to last 2 sts, p1, sl 1 pwise wyif.

Rib patt: K1, p1.

St st: K on RS, p on WS.

5-stitch right front band: At beg of RS row, two-stitch selvage, p1, sl1, p1; at end of WS row, k1, p1, k1, two-stitch selvage.

5-stitch left front band: At end of RS row, p1, sl1, p1, two-stitch selvage; at beg of WS row, two-stitch selvage, k1, p1, k1.

Sl1 [slipped stitch]: On RS row, sl 1 pwise wyib; on WS row, p1.

Full-fashion decrease: At beg of RS row, 5-st right front band, k2tog; at end of RS row, work to last 7 sts, skp, 5-st left front band.

Full-fashion increase: On RS row: M1R, 2 sts in from each edge.

Skp: Sl 1 kwise, k1, pass slipped st over knitted st.

Gauge: 11 sts and 17 rows = 10 x 10 cm in St st with size 8 mm needles and 2 strands held tog.

Back: With size 7 mm needles and 2 strands held tog cast on 64 (68, 74) sts. Working first and last st as selvage sts, work 1 WS row in rib patt. Change to size 8 mm needles. Maintaining selvage sts, work in St st and shape sides as foll: Working full-fashion inc, inc 1 st at each end of 24th row from cast-on, then every 20th row 2 times = 70 (74, 80) sts. Work even until piece meas 46 cm from cast-on. Place marker in first and last st on last WS row to indicate beg of armholes. Work even until

piece meas 21 (22, 23) cm from armhole markers, ending with a WS row. Shape shoulders and neck: At each shoulder edge bind off 4 sts 3 times, 5 sts 2 times (4 sts 1 time, 5 sts 4 times / 4 sts 1 time, 6 sts 3 times / 5 sts 1 time). At same time, when working 3rd RS shoulder bind-off row, work neck as foll: Bind off center 20 sts. Working each side separately, bind off 3 sts at each neck edge 1 time. No sts rem.

Left front: With size 7 mm needles and 2 strands held tog cast on 37 (39, 42) sts. Next row (WS): 5-st left front band; beg with p1, work rib patt to last st, selvage st. Change to size 8 mm needles. Next row (RS): Selvage st, work in St st to last 5 sts, 5-st left front band. Cont in patt as set by last row, work full-fashion incs for side shaping at right edge same as for back = 40 (42, 45) sts. Work even until piece meas 39 (40, 41) cm from cast-on, ending with a WS row. Shape neck: Working full-fashion dec, dec 1 st at end of next RS row, then every foll RS row 4 times, then every alt RS row 8 times = 27 (29, 32) sts. At same time, when same length as back to armhole, place armhole marker at right edge and when same length as back to shoulder, shape shoulder at right edge same as for back. = 5 sts rem for neckband. Cast on 1 st at right edge of neckband (work as selvage st throughout) = 6 sts for neckband and cont in patt for 12 cm, ending with a WS row. Place sts on holder.

Right front: Work same as left front, reversing all shaping and patt placement and working 3 buttonholes at beg of RS rows as foll: Two-stitch selvage, p1, bind off 1 st, p1, work to end. On foll WS row, cast on 1 st over bound-off st. Work first buttonhole when piece meas 6 cm from cast-on, rem 2 buttonholes spaced 14.5 (15, 15.5) cm apart.

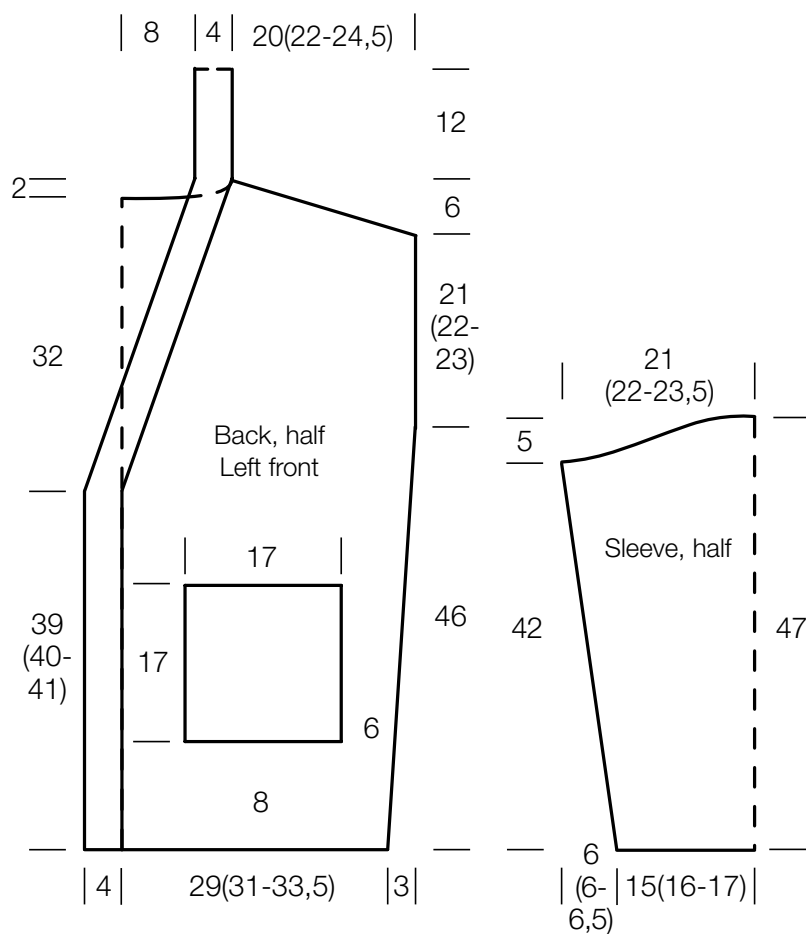
Sleeves: With size 7 mm needles and 2 strands held tog cast on 34 (36, 38) sts. Working first and last st as selvage sts, work 1 WS row in rib patt. Change to size 8 mm needles. Maintaining selvage sts, work in St st and shape sleeve as foll: Working full-fashion inc, inc 1 st at each end of 10th row from cast-on, then every foll 10th (every foll 10th / every alt 8th and 10th) row 5 (5, 6) times = 46 (48, 52) sts. Work even until piece meas 42 cm from cast-on, ending with a WS row. Shape sleeve cap: Bind off 4 (4, 5) sts at beg of next 2 rows, 4 sts at beg of next 6 rows. Bind off rem 14 (16, 18) sts.

Pockets: Make 2. With size 7 mm needles and 2 strands held tog cast on 17 sts. Beg with a WS row and working first and last st as selvage sts, work in St st and shape pocket as foll: Inc 1 st at each end of next RS row = 19 sts. Change to size 8 mm needles. Work even until piece meas 17 cm from cast-on. Bind off all sts.

Finishing: Pin pieces to measurements and block. Referring to schematic for placement, sew pockets to fronts. Sew shoulder seams. Graft neckbands tog, then sew neckband to back neck. Sew on sleeves between markers. Sew side and sleeve seams. Sew on buttons.

JACKET • PIÙ

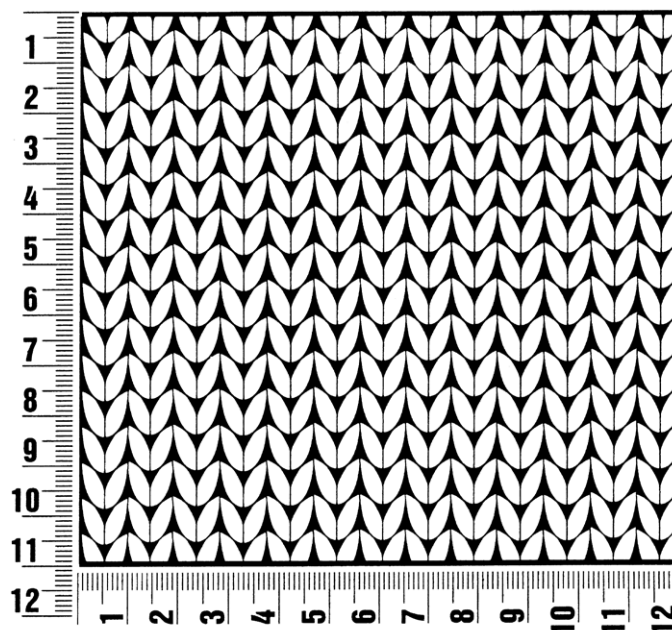
Design 15 – Filati Journal 63



Gauge Swatch

Before you begin ...

...make a gauge swatch. Use the recommended needles, yarns and pattern stitch for your gauge swatch. It should measure approx. 12 cm x 12 cm. Cast-on and bind-off rows, as well as selvage stitches should not be included in the measurement. Pin your swatch and block it as you would the finished pieces of the garment. Count stitches and rows over 10 cm. If your gauge swatch is too small, switch to larger needles. If your gauge swatch is too big, switch to smaller needles.



Abbreviations

beg = begin(ning) · **ch** = chain · **cont** = continue · **dec** = decreas(e)(ing) · **inc** = increas(e)(ing) · **k** = knit · **kwise** = as if to knit
meas = measures · **M1L** = lift strand between sts from front to back and knit this strand through the back loop · **M1R** = lift strand between sts from the back and knit this strand through the front loop · **patt** = pattern · **pm** = place marker · **p** = purl
pwise = as if to purl · **rem** = remain(ing) · **rep** = repeat(s) · **rev St st** = reverse stockinette stitch · **rnd(s)** = round(s) · **RS** = right side · **sc** = single crochet · **skp** = slip 1 stitch as if to knit, knit 1 stitch, pass slipped stitch over knitted stitch · **sk2p** = slip 1 stitch as if to knit, knit 2 together, pass slipped stitch over knitted stitch · **s2kp** = slip 2 stitches as if to knit, k 1 stitch, pass slipped stitches over knitted stitch · **sl** = slip · **st(s)** = stitch(es) · **St st** = stockinette stitch · **tbl** = through the back loop · **tog** = together · **wyib** = with yarn in back of work · **wyif** = with yarn in front of work · **WS** = wrong side · **yo(s)** = yarn over(s)

Publisher's Info

Publisher: Lana Grossa GmbH, Gaimersheim, www.lana-grossa.com

Photographer: Yannik Schütte