



www.lana-grossa.com

CROCHET CARDIGAN . ABOUT BERLIN SPOTTY

Design 21 – Filati Journal 63

CROCHET CARDIGAN ·

ABOUT BERLIN SPOTTY

Design 21 – Filati Journal 63



Size 36/38 (40/42, 44/46)

Instructions are given for first size. Figures in parenthesis refer to larger sizes. When only one figure is given, it applies to all sizes.

Materials: 700 (750, 800) g of Lana Grossa **About Berlin Spotty** (55% cotton, 26% polyamide, 19% polyester; 125 m/50 g) in Pastel Blue Variegated (**col 5**). Size 3.5 mm knitting needles; one set size 3.5 mm double-pointed knitting needles [dpns]; size 3.5 mm crochet hook; size 3.5 mm circular knitting needle, 100 cm long; three 20 mm mother-of-pearl buttons.

Selvage stitches: On every row: Sl first st kwise, k last st.

Rib patt: K1, p1.

Crochet patt in rows: Odd number of sts. Work according to chart A. Numbers at right edge of chart indicate RS rows, number at left edge of chart indicates WS row. Beg each row with ch 3 (counts as dc). Work to patt rep, work 2 sts between arrows for patt rep, work to end of chart. Work rows 1 – 3 once, then rep rows 2 and 3.

Crochet patt in rnds: Even number of sts. Work according to chart B. Numbers on chart indicate rnds. Beg each rnd with ch 3 (counts as dc), join rnds with sl st in top of beg ch-3. Work 2-st patt rep between arrows throughout. Work rnds 1 – 3 once, then rep rnds 2 and 3.

Full-fashion decrease when working in rows: Work according to chart C. One patt rep is left unworked at left edge every alt row.

Full-fashion increase when working in rnds: Work according to chart D. Inc's are worked by working 1 puff st + ch 1 between first and last 2 dc on rnd 5.

Gauges: 22 sts and 34 rows = 10 x 10 cm in rib patt on size 3.5 mm needles; 22 sts and 11 rows = 10 x 10 cm in crochet patt with size 3.5 mm hook.

Back: With size 3.5 mm knitting needles cast on 105 (113, 121) sts. Beg and end with a WS row and working first and last st as selvage sts, work in rib patt for 17 rows and piece

meas 5 cm from cast-on. Bind off all sts. Work crochet patt according to chart A, working 1 puff st in every alt bound-off st = 51 (55, 59) puff sts per row. Foll chart A for a total of 27 rows = 25 cm. Place marker at each edge to indicate beg of armholes. Cont for 21 (22, 23) rows and piece meas 19 (20, 21) cm from armhole markers. Fasten off.

Left front: With size 3.5 mm knitting needles cast on 53 (57, 61) sts. Beg and end with a WS row and working first and last st as selvage sts, work in rib patt for 17 rows and piece meas 5 cm from cast-on. Bind off all sts. Work crochet patt according to chart A, working 1 puff st in every alt bound-off st = 25 (27, 29) puff sts per row. Foll chart A for a total of 25 rows = 23 cm. Shape neck: Work chart C, decreasing a total of 10 patt reps. At same time, when same length as back to armhole, place armhole marker at right edge. Cont until a total of 21 (22, 23) rows = 19 (20, 21) cm has been worked from armhole marker. Fasten off.

Right front: Work same as left front, reversing all shaping.

Sleeves: With size 3.5 mm dpns cast on 52 (56, 60) sts. Place beg of rnd marker and join for working in rnds. Work rib patt in rnds for 17 rnds and piece meas 5 cm from cast-on. Bind off all sts. Work crochet patt according to chart D, working 1 puff st in every alt bound-off st = 25 (27, 29) puff sts per rnd. Work incs on rnd 5, then every alt 4th and 6th rnd 7 times = 84 (88, 92) sts. Work even until a total of 44 rnds = 40 cm has been worked in crochet patt. Fasten off.

Finishing: Pin pieces to measurements and block. Sew shoulder seams. Front and neckband: With circular knitting needle and RS facing, pick up and k 53 sts along straight edge and 52 (54, 56) sts along shaped edge of right front, 43 sts along back neck, 52 (54, 56) sts along shaped edge and 53 sts along straight edge of left front edge = 253 (257, 261) sts. Next row (WS): Selvage st, * p1, k1; rep from * to last 2 sts, p1, selvage st. Work in rib patt as set by last row for a total of 9 rows = 2.5 cm. Next RS (buttonhole) row: Work first buttonhole 3 cm up from cast-on edge of right front, rem 2 buttonholes spaced 10 cm apart. For each buttonhole, bind off 2 sts. On foll WS row, cast on 2 sts over each set of bound-off sts. Bind off all sts in rib on next RS row. Sew on sleeves between markers. Sew side and sleeve seams. Sew on buttons.

CROCHET CARDIGAN · ABOUT BERLIN SPOTTY

Design 21 – Filati Journal 63



Chart A

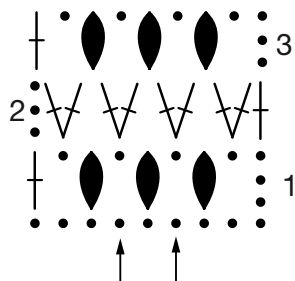


Chart B

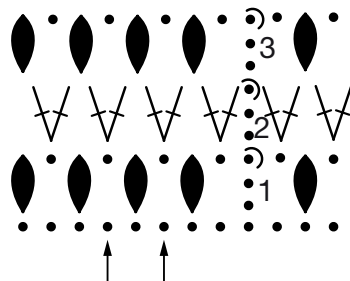


Chart C

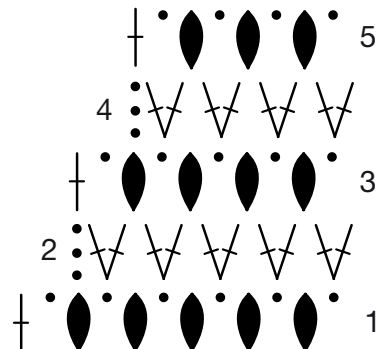


Chart D

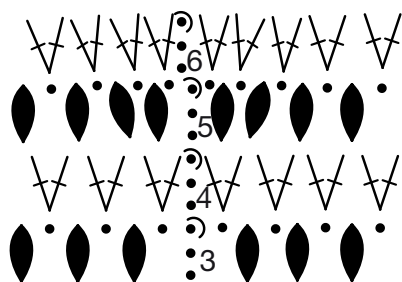
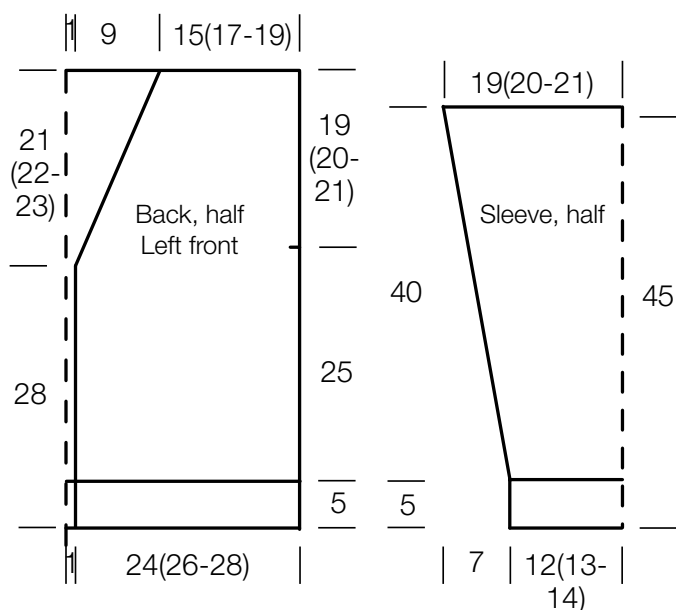


Chart key:

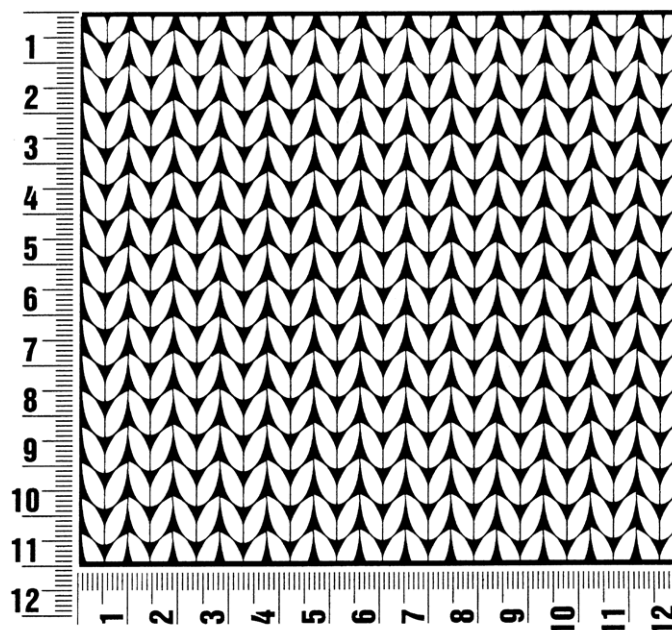
- = chain (ch)
- ∩ = slip stitch (sl st)
- ⊥ = double crochet (dc)
- ∨ = 2 dc in same st or sp
- = 1 puff st: [yo, insert hook into st, pull up loop] 3 times, yo and draw through all loops on hook



Gauge Swatch

Before you begin ...

...make a gauge swatch. Use the recommended needles, yarns and pattern stitch for your gauge swatch. It should measure approx. 12 cm x 12 cm. Cast-on and bind-off rows, as well as selvage stitches should not be included in the measurement. Pin your swatch and block it as you would the finished pieces of the garment. Count stitches and rows over 10 cm. If your gauge swatch is too small, switch to larger needles. If your gauge swatch is too big, switch to smaller needles.



Abbreviations

beg = begin(ning) · **ch** = chain · **cont** = continue · **dec** = decreas(e)(ing) · **inc** = increas(e)(ing) · **k** = knit · **kwise** = as if to knit
meas = measures · **M1L** = lift strand between sts from front to back and knit this strand through the back loop · **M1R** = lift strand between sts from the back and knit this strand through the front loop · **patt** = pattern · **pm** = place marker · **p** = purl
pwise = as if to purl · **rem** = remain(ing) · **rep** = repeat(s) · **rev St st** = reverse stockinette stitch · **rnd(s)** = round(s) · **RS** = right side · **sc** = single crochet · **skp** = slip 1 stitch as if to knit, knit 1 stitch, pass slipped stitch over knitted stitch · **sk2p** = slip 1 stitch as if to knit, knit 2 together, pass slipped stitch over knitted stitch · **s2kp** = slip 2 stitches as if to knit, k 1 stitch, pass slipped stitches over knitted stitch · **sl** = slip · **st(s)** = stitch(es) · **St st** = stockinette stitch · **tbl** = through the back loop · **tog** = together · **wyib** = with yarn in back of work · **wyif** = with yarn in front of work · **WS** = wrong side · **yo(s)** = yarn over(s)

Publisher's Info

Publisher: Lana Grossa GmbH, Gaimersheim, www.lana-grossa.com

Photographer: Nicolas Olonetzky, www.olonetzky.com