



www.lana-grossa.com



CARDIGAN · BACCA

Design 24 – Filati Journal 63

CARDIGAN • BACCA

Design 24 – Filati Journal 63



Size One size

Materials: 350 g of Lana Grossa **Bacca** (100% cotton; 120 m/50 g) in Jeans (**col 5**). Size 3 and 4 mm needles; size 3 mm circular needle, 60 cm long; seven 16 mm buttons.

Selvage stitches: On every row: Sl first st kwise, k last st.

Rib patt: K2, p2.

Lace patt: Work according to chart. Multiple of 20 + 3. Numbers at right edge of chart indicate RS rows; on WS rows purl all sts and yos. Work to patt rep, work 20 sts between arrows for patt rep, work to end of chart. Work rows 1 – 34 once, then rep rows 3 – 34.

Gauges: 24 sts and 34 rows = 10 x 10 cm in rib patt on size 3 mm needles; 19 sts and 26 rows = 10 x 10 cm in lace patt on size 4 mm needles.

Back: With size 3 mm needles cast on 82 sts. Next row (WS): Selvage st, k1, * p2, k2; rep from * to last 4 sts, p2, k1, selvage st. Work in rib patt as set by last row until piece meas 17 cm from cast-on, increasing 1 st at end of last WS row = 83 sts. Change to size 4 mm needles. Work chart for 46 rows and piece meas 18 cm from end of rib patt. Place marker in first and last st on last WS row to indicate beg of armholes. Cont for 38 rows and piece meas 15 cm from armhole markers. Shape neck: Next row (RS): Bind off center 23 sts. Working each side separately, bind off 3 sts at each neck edge 1 time, 2 sts 1 time, and when a total of 44 rows = 17 cm has been worked from armhole markers, bind off rem 25 sts for each shoulder.

Left front: With size 3 mm needles cast on 42 sts. Next row (WS): Selvage st, k1, * p2, k2; rep from * to last 4 sts, p2, k1, selvage st. Work in rib patt as set by last row until piece meas 17 cm from cast-on, increasing 1 st at end of last WS row = 43 sts. Change to size 4 mm needles. Work chart for 46 rows and piece meas 18 cm from end of rib patt. Place marker in

last st on last WS row to indicate beg of armhole. Cont for 23 rows and piece meas 9 cm from armhole markers. Shape neck: At beg of WS rows, bind off 5 sts 1 time, 4 sts 1 time, 3 sts 1 time, 2 sts 1 time, 1 st 4 times and when same length as back to shoulder, bind off rem 25 shoulder sts.

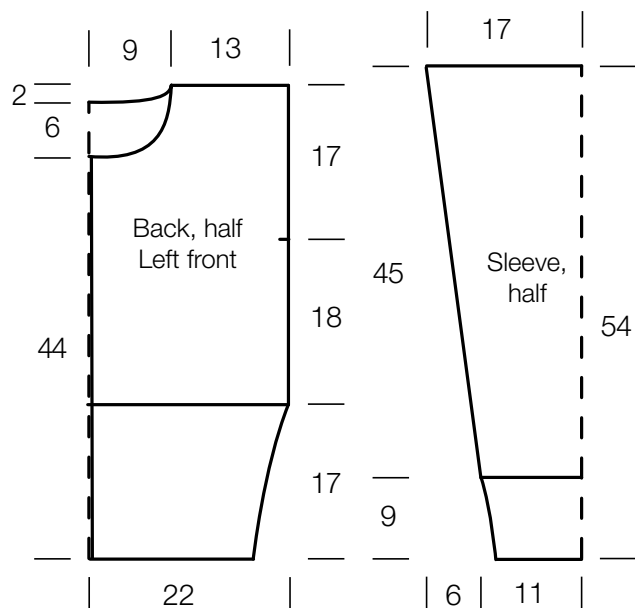
Right front: Work same as left front, reversing all shaping.

Sleeves: With size 3 mm needles cast on 42 sts. Next row (WS): Selvage st, k1, * p2, k2; rep from * to last 4 sts, p2, k1, selvage st. Work in rib patt as set by last row until piece meas 17 cm from cast-on, increasing 1 st at end of last WS row = 43 sts. Change to size 4 mm needles. Work chart and shape sleeve as foll: Inc 1 st at each end of 9th row, then every 10th row 10 times = 65 sts. Work increased sts into patt. Work even until chart has been worked for a total of 118 rows and piece meas 45 cm from end of rib patt. Loosely bind off all sts.

Finishing: Pin pieces to measurements and block. Sew shoulder seams. **Neckband:** With size 3 mm circular needle, pick up and k 84 sts evenly along neck edge. Next row (WS): Selvage st, knit to end of row. Next row (RS): Selvage st, * k2, p2; rep from * to last 3 sts, k2, selvage st. Work in rib patt as set by last row for a total of 11 rows = 3 cm. Bind off all sts in rib. **Left front button band:** With size 3 mm circular needle and RS facing, pick up and k 92 sts evenly along left front edge, including short edge of neckband. Next row (WS): Selvage st, knit to end of row. Next row (RS): Selvage st, * k2, p2; rep from * to last 3 sts, k2, selvage st. Work in rib patt as set by last row for a total of 11 rows = 3 cm. Bind off all sts in rib. **Right front buttonhole band:** With size 4 mm circular needle and RS facing, pick up and k 92 sts evenly along right front edge, including short edge of neckband. Work same as button band and at same time, on 6th row, work 7 buttonholes as foll: Selvage st, 2 sts in rib patt, [bind off 2 sts, 12 sts in rib patt] 6 times, bind off 2 sts, 2 sts in rib patt, selvage st. On foll WS row, cast on 2 sts over each set of bound-off sts. Complete as given for button band. Sew in sleeves. Sew side and sleeve seams.

CARDIGAN · BACCA

Design 24 – Filati Journal 63



Chart

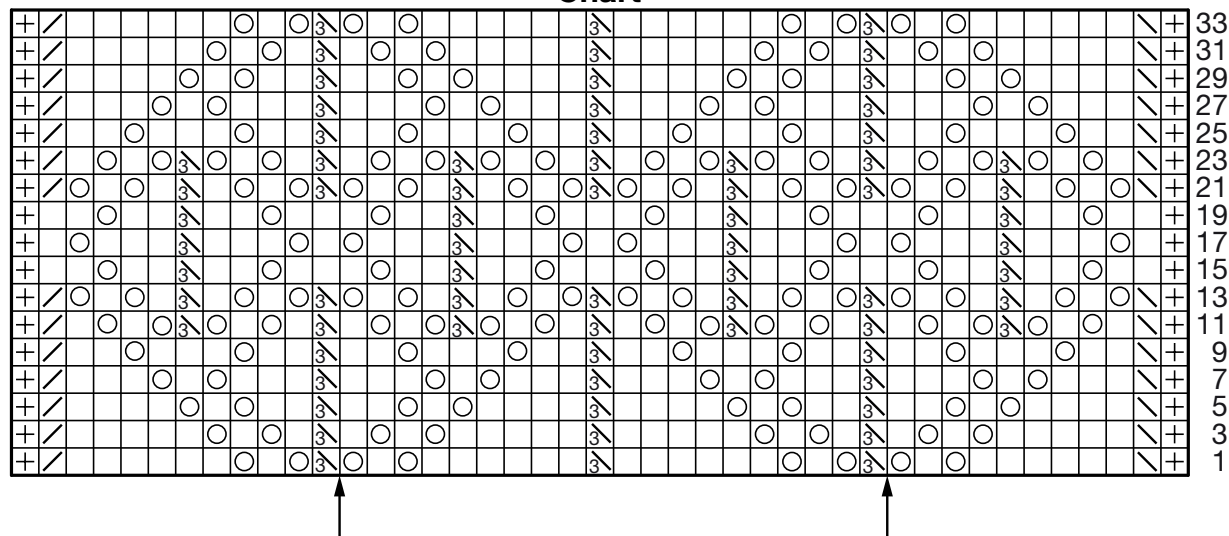


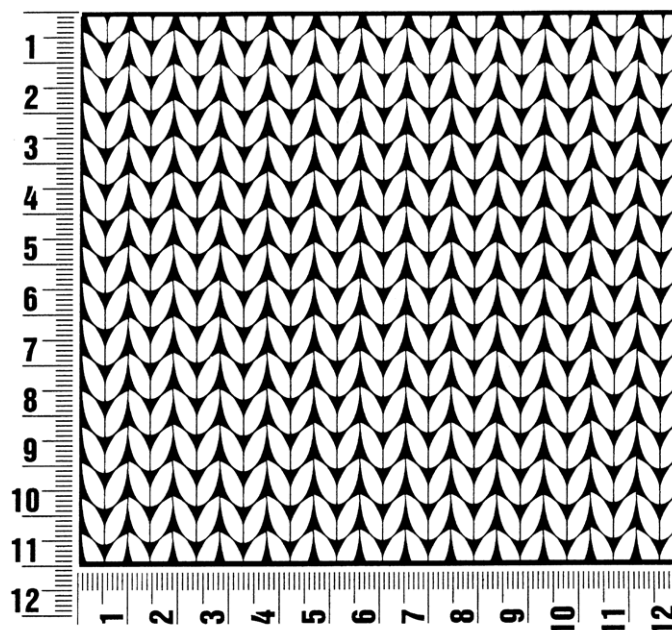
Chart key:

- ⊞ = selvage st
- = k1
- ⊞ = yo
- ⊞ = k2tog
- ⊞ = skp: sl 1 kwise, k1, pass slipped st over knitted st
- ⊞ = sk2p: sl 1 kwise, k2tog, pass slipped st over knitted st

Gauge Swatch

Before you begin ...

...make a gauge swatch. Use the recommended needles, yarns and pattern stitch for your gauge swatch. It should measure approx. 12 cm x 12 cm. Cast-on and bind-off rows, as well as selvage stitches should not be included in the measurement. Pin your swatch and block it as you would the finished pieces of the garment. Count stitches and rows over 10 cm. If your gauge swatch is too small, switch to larger needles. If your gauge swatch is too big, switch to smaller needles.



Abbreviations

beg = begin(ning) · **ch** = chain · **cont** = continue · **dec** = decreas(e)(ing) · **inc** = increas(e)(ing) · **k** = knit · **kwise** = as if to knit
meas = measures · **M1L** = lift strand between sts from front to back and knit this strand through the back loop · **M1R** = lift strand between sts from the back and knit this strand through the front loop · **patt** = pattern · **pm** = place marker · **p** = purl
pwise = as if to purl · **rem** = remain(ing) · **rep** = repeat(s) · **rev St st** = reverse stockinette stitch · **rnd(s)** = round(s) · **RS** = right side · **sc** = single crochet · **skp** = slip 1 stitch as if to knit, knit 1 stitch, pass slipped stitch over knitted stitch · **sk2p** = slip 1 stitch as if to knit, knit 2 together, pass slipped stitch over knitted stitch · **s2kp** = slip 2 stitches as if to knit, k 1 stitch, pass slipped stitches over knitted stitch · **sl** = slip · **st(s)** = stitch(es) · **St st** = stockinette stitch · **tbl** = through the back loop · **tog** = together · **wyib** = with yarn in back of work · **wyif** = with yarn in front of work · **WS** = wrong side · **yo(s)** = yarn over(s)

Publisher's Info

Publisher: Lana Grossa GmbH, Gaimersheim, www.lana-grossa.com

Photographer: Nicolas Olonetzky, www.olonetzky.com