



www.lana-grossa.com



SHIRT · ABOUT BERLIN VANITY

Design 26 – Filati Journal 63

SHIRT · ABOUT BERLIN VANITY

Design 26 – Filati Journal 63



Size One size

Materials: 450 g of Lana Grossa **About Berlin Vanity** (54% cotton, 21% viscose, 13% silk, 12% polyamide; 130 m/50 g) in Black/Turquoise/Petrol/Yellow/Pink Variegated (**col 13**). Size 3.5 and 4 mm needles; size 3.5 mm circular needle, 60 cm long.

Slip garter selvage: On every row: Sl first st kwise, k last st.

Slip stitch selvage: On every row: K first st, sl last st pwise wyif.

Rib patt: K1, p1.

Main patt: Work according to chart. Number at right edge of chart indicates RS row, number at left edge of chart indicates WS row. Work to patt rep, work 2 sts between arrows for patt rep, work to end of chart. Rep rows 1 and 2.

Full-fashion dbl decrease: After marked st, k1, p1, sk2p; before marked st, k3tog, p1, k1.

Gauges: 16 sts and 40 rows = 10 x 10 cm in main patt on size 4 mm needles; 19 sts and 36 rows = 10 x 10 cm in rib patt on size 3.5 mm needles.

Back: With size 3.5 mm needles cast on 105 sts. Beg and end with a WS row and working first and last st as slip garter selvage, work in rib patt for 9 rows and piece meas 3 cm from cast-on. Change to size 4 mm needles. Work in main patt according to chart for 88 rows and piece meas 22 cm from end of rib patt. Place marker in first and last st on last WS row to indicate beg of armholes. Working first and last st as slip st selvage now, cont in patt for 76 rows and piece meas 19 cm from armhole markers. Place marker in first and last st on last WS row. Working first and last st as slip garter selvage now, cont in patt for 16 rows and piece meas 4 cm from 2nd set of markers. Place sts on holder.

Front: Work same as back.

Finishing: Pin pieces to measurements and block. Sew side seams to armhole markers. **Neckband:** Return 105 held back sts and 105 held front sts to size 3.5 mm circular needle = 210 sts and with RS facing rejoin yarn. Place beg of rnd marker and join for working in rnds. Rnd 1: Work rib patt in rnds and at same time, k2tog or p2tog as needed for rib patt adjoining selvage sts at each shoulder and mark this st and k2tog or p2tog as needed for rib patt every 3rd and 4th st = 156 sts. Work even in rib patt for 24 rnds and neckband meas 7 cm. Working full-fashion dbl dec, dec 8 sts on next rnd, then every alt rnd 3 more times = 124 sts. Work 1 rnd even in rib patt and neckband meas 9 cm. Bind off all sts in rib.

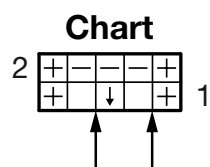
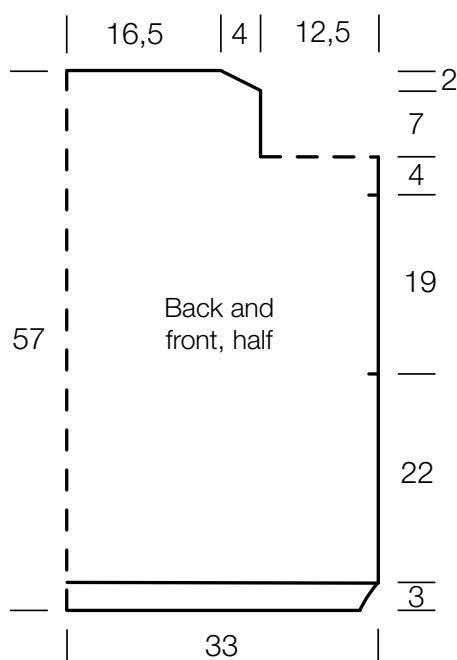


Chart key:

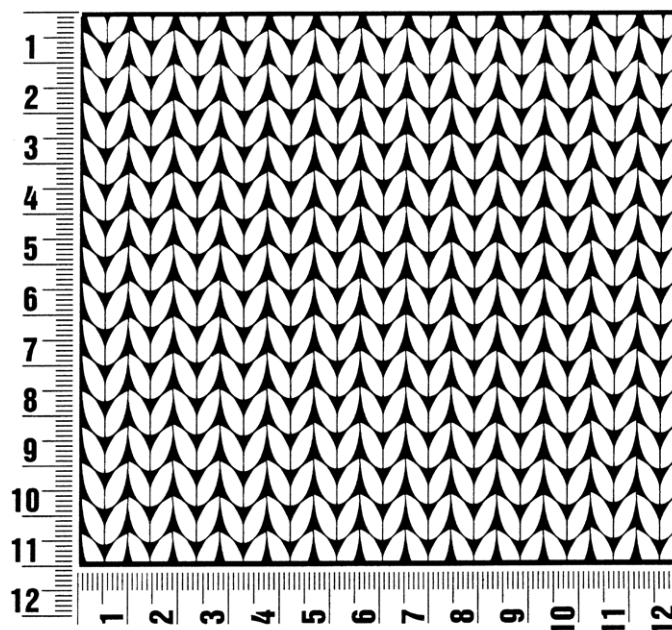
- ⊕ = 1 Rand-M
- = 1 M re
- ▢ = 1 M li
- ⬇ = 1 M re, jedoch 1 R tiefer einstechen



Gauge Swatch

Before you begin ...

...make a gauge swatch. Use the recommended needles, yarns and pattern stitch for your gauge swatch. It should measure approx. 12 cm x 12 cm. Cast-on and bind-off rows, as well as selvage stitches should not be included in the measurement. Pin your swatch and block it as you would the finished pieces of the garment. Count stitches and rows over 10 cm. If your gauge swatch is too small, switch to larger needles. If your gauge swatch is too big, switch to smaller needles.



Abbreviations

beg = begin(ning) · **ch** = chain · **cont** = continue · **dec** = decreas(e)(ing) · **inc** = increas(e)(ing) · **k** = knit · **kwise** = as if to knit
meas = measures · **M1L** = lift strand between sts from front to back and knit this strand through the back loop · **M1R** = lift strand between sts from the back and knit this strand through the front loop · **patt** = pattern · **pm** = place marker · **p** = purl
pwise = as if to purl · **rem** = remain(ing) · **rep** = repeat(s) · **rev St st** = reverse stockinette stitch · **rnd(s)** = round(s) · **RS** = right side · **sc** = single crochet · **skp** = slip 1 stitch as if to knit, knit 1 stitch, pass slipped stitch over knitted stitch · **sk2p** = slip 1 stitch as if to knit, knit 2 together, pass slipped stitch over knitted stitch · **s2kp** = slip 2 stitches as if to knit, k 1 stitch, pass slipped stitches over knitted stitch · **sl** = slip · **st(s)** = stitch(es) · **St st** = stockinette stitch · **tbl** = through the back loop · **tog** = together · **wyib** = with yarn in back of work · **wyif** = with yarn in front of work · **WS** = wrong side · **yo(s)** = yarn over(s)

Publisher's Info

Publisher: Lana Grossa GmbH, Gaimersheim, www.lana-grossa.com

Photographer: Nicolas Olonetzky, www.olonetzky.com