



www.lana-grossa.com

JACKET · ROMA

Design 01 – Filati Journal 63

PULLOVER · RISERVA

Design 31 – Filati Journal 63



Size 36/38 (40/42, 44/46)

Instructions are given for first size. Figures in parenthesis refer to larger sizes. When only one figure is given, it applies to all sizes.

Materials: **300 (300, 350) g each** of Lana Grossa **Riserva** (70% organic cotton, 30% recycled polyamide; 125 m/50 g) in Pink (**col 32**) and Petrol (**col 7**). 4 size 3 mm needles; size 5 mm needles; size 3 mm circular needle, 50 cm long.

Casting on over 2 needles: Hold 2 needles tog during cast on. Remove one needle after having cast on. This creates a more flexible cast-on edge.

Selvage sts: On every row: K first st, sl last st pwise wyif.

Rib patt: K1, p1.

St st: K on RS, p on WS.

Stripe patt: Work 6 rows each in Pink and Petrol alternately throughout.

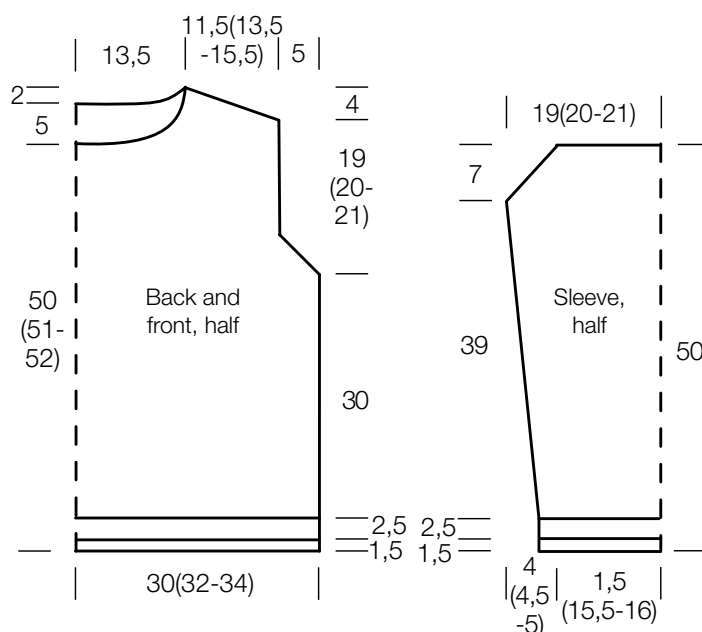
Gauge: 20 sts and 28 rows = 10 x 10 cm in St st on size 5 mm needles.

Back: With two size 3 mm needles held tog and Pink, cast on 120 (128, 136) sts for bottom rib [see casting on over 2 needles]. Beg with a WS row and working first and last st as selvage sts, work in rib patt for 12 rows and piece meas 4 cm from cast-on. Purl 1 WS row. Put aside. With two size 3 mm needles held tog and Petrol, cast on 120 (128, 136) sts for top rib [see casting on over 2 needles]. Beg and end with a WS row and working first and last st as selvage sts, work in rib patt for 7 rows and piece meas 2.5 cm from cast-on. Using size 5 mm needles and Pink, join top and bottom rib as foll: Place top rib over bottom rib, k2tog each top rib st tog with its corresponding bottom rib st. Maintaining selvage sts, work in St st and stripe patt for 84 rows = 30 cm. Shape armholes: Bind off 2 sts at beg of next 2 rows, 1 st at beg of next 16 rows = 100 (108, 116) sts. Cont until a total of 54 (56, 58) rows has been worked from beg of armhole shaping and armhole meas 19 (20, 21) cm. Shape shoulders and neck: At each shoulder edge bind off 4 (6, 6) sts 1 time, 4 (4, 5) sts 4 times, 3 (5, 5) sts 1 time. **At same time**, when working 3rd RS shoulder bind-off row, work neck as foll: Bind off center 38 sts. Working each side separately, bind off 5 sts at each neck edge 1 time, 3 sts 1 time. No sts rem.

Front: Work same as back until armhole meas 16 (17, 18) cm, ending with a WS row. Shape neck: Next row (RS): Bind off center 24 sts. Working each side separately, bind off 2 sts at each neck edge 6 times, 1 st 3 times and when same length as back to shoulders, shape shoulders same as for back. No sts rem.

Sleeves: With two size 3 mm needles held tog and Pink, cast on 60 (62, 64) sts for bottom rib [see casting on over 2 needles]. Beg with a WS row and working first and last st as selvage sts, work in rib patt for 12 rows and piece meas 4 cm from cast-on. Purl 1 WS row. Place sts on holder. With two size 3 mm needles held tog and Petrol, cast on 60 (62, 64) sts for top rib [see casting on over 2 needles]. Beg and end with a WS row and working first and last st as selvage sts, work in rib patt for 7 rows and piece meas 2.5 cm from cast-on. Using size 5 mm needles and Pink, join top and bottom rib as foll: Place top rib over bottom rib, k2tog each top rib st tog with its corresponding bottom rib st. Maintaining selvage sts, work in St st and stripe patt and shape sleeve as foll: Inc 1 st at each end of 3rd (5, 7)th row, then every 14th (12, 10)th row 7 (8, 9) times = 76 (80, 84) sts. Work even until a total of 108 rows has been worked in St st and piece meas 39 cm from end of rib patt. Shape sleeve cap: Bind off 2 sts at beg of next 2 rows, 1 st at beg of next 16 rows. Bind off rem 56 (60, 64) sts.

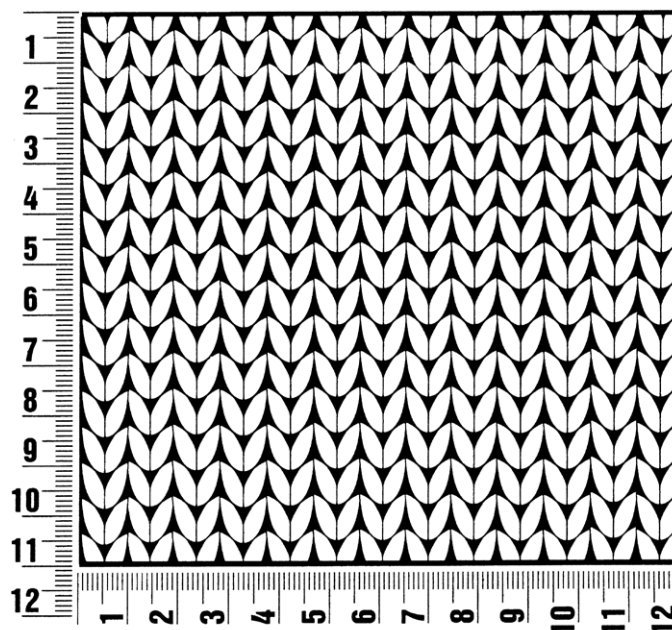
Finishing: Pin pieces to measurements and block. Sew shoulder seams. **Neckband:** With size 3 mm circular needle, Pink and RS facing, pick up and k 118 sts evenly around neck edge. Place beg of rnd marker and join for working in rnds. Work rib patt in rnds for 2.5 cm. Bind off all sts in rib. With size 3 mm circular needle, Petrol and WS facing, pick up and k 118 sts evenly around neck edge. Place beg of rnd marker and join for working in rnds. Work rib patt in rnds for 3 cm. Bind off all sts in rib. Sew in sleeves. Sew side and sleeve seams.



Gauge Swatch

Before you begin ...

...make a gauge swatch. Use the recommended needles, yarns and pattern stitch for your gauge swatch. It should measure approx. 12 cm x 12 cm. Cast-on and bind-off rows, as well as selvage stitches should not be included in the measurement. Pin your swatch and block it as you would the finished pieces of the garment. Count stitches and rows over 10 cm. If your gauge swatch is too small, switch to larger needles. If your gauge swatch is too big, switch to smaller needles.



Abbreviations

beg = begin(ning) · **ch** = chain · **cont** = continue · **dec** = decreas(e)(ing) · **inc** = increas(e)(ing) · **k** = knit · **kwise** = as if to knit
meas = measures · **M1L** = lift strand between sts from front to back and knit this strand through the back loop · **M1R** = lift strand between sts from the back and knit this strand through the front loop · **patt** = pattern · **pm** = place marker · **p** = purl
pwise = as if to purl · **rem** = remain(ing) · **rep** = repeat(s) · **rev St st** = reverse stockinette stitch · **rnd(s)** = round(s) · **RS** = right side · **sc** = single crochet · **skp** = slip 1 stitch as if to knit, knit 1 stitch, pass slipped stitch over knitted stitch · **sk2p** = slip 1 stitch as if to knit, knit 2 together, pass slipped stitch over knitted stitch · **s2kp** = slip 2 stitches as if to knit, k 1 stitch, pass slipped stitches over knitted stitch · **sl** = slip · **st(s)** = stitch(es) · **St st** = stockinette stitch · **tbl** = through the back loop · **tog** = together · **wyib** = with yarn in back of work · **wyif** = with yarn in front of work · **WS** = wrong side · **yo(s)** = yarn over(s)

Publisher's Info

Publisher: Lana Grossa GmbH, Gaimersheim, www.lana-grossa.com

Photographer: Nicolas Olonetzky, www.olonetzky.com