

LANA GROSSA



© Lana Grossa GmbH - Photo: Clara Nebeling

Design 17 – Classici 22

TOP
ALLORA HAND-DYED

TOP · ALLORA HAND-DYED

Design 17 – Classici 22



Size 36/38 (40/42, 44)

Instructions are given for first size. Figures in parenthesis refer to larger sizes. When only one figure is given, it applies to all sizes.

Materials: 150 (200, 200) g of Lana Grossa **Allora hand-dyed** (76% cotton, 14% superfine Merino wool, 10% baby alpaca; 300 m/50 g) in Mewa (**col 268**) and 50 g in Ber (**col 266**). Size 3 and 3.5 mm needles; size 3 mm circular needle, 40 cm long.

Rib patt: K1, p1.

St st: K on RS, p on WS.

Stripe patt: 2 rows Mewa, [2 rows Ber, 6 rows Mewa] 12 times, 2 rows Ber, rem rows Mewa.

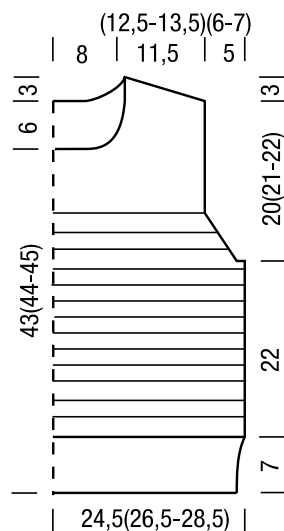
Gauge: 27 sts and 36 rows = 10 x 10 cm in St st on size 3.5 mm needles.

Back: With size 3 mm needles and Mewa cast on 135 (145, 155) sts. Next row (WS): Selvage st, p1, * k1, p1; rep from *, end selvage st. Work in rib patt as set by last row until piece meas 7 cm from cast-on, ending with a WS row. Change to size 3.5 mm needles. Maintaining selvage sts, work in St st and stripe patt until piece meas 29 cm from cast-on, ending

with a WS row. Shape armholes: Bind off 2 (3, 4) sts at beg of next 2 rows, 1 st at beg of next 22 (26, 30) rows = 109 (113, 117) sts. Cont until armhole meas 20 (21, 22) cm, ending with a WS row. Shape shoulders and neck: At each shoulder edge bind off 6 sts 3 times, 7 sts 2 times (6 sts 1 time, 7 sts 4 times / 7 sts 4 times, 8 sts 1 time). **At same time**, on first row of shoulder shaping, shape neck as foll: Bind off center 29 sts. Working each side separately, bind off 2 sts at each neck edge 4 times. No sts rem.

Front: Work same as back until piece meas 43 (44, 45) cm from cast-on, ending with a WS row. Shape neck: Next row (RS): Bind off center 11 sts. Working each side separately, bind off 3 sts at each neck edge 2 times, 2 sts 3 times, 1 st 5 times and when same length as back to shoulders, shape shoulders same as for back. No sts rem.

Finishing: Pin pieces to measurements and block. Sew shoulder and side seams. **Neckband:** With size 3 mm circular needle and Mewa, pick up and k 140 sts evenly around neck edge. Place beg of rnd marker and join for working in rnds. Work rib patt in rnds for 3 cm. Bind off all sts in rib. **Armhole bands:** With size 3 mm circular needle and Mewa, pick up and k 126 (130, 134) sts evenly around armhole edge. Place beg of rnd marker and join for working in rnds. Work rib patt in rnds for 2 cm. Bind off all sts in rib.

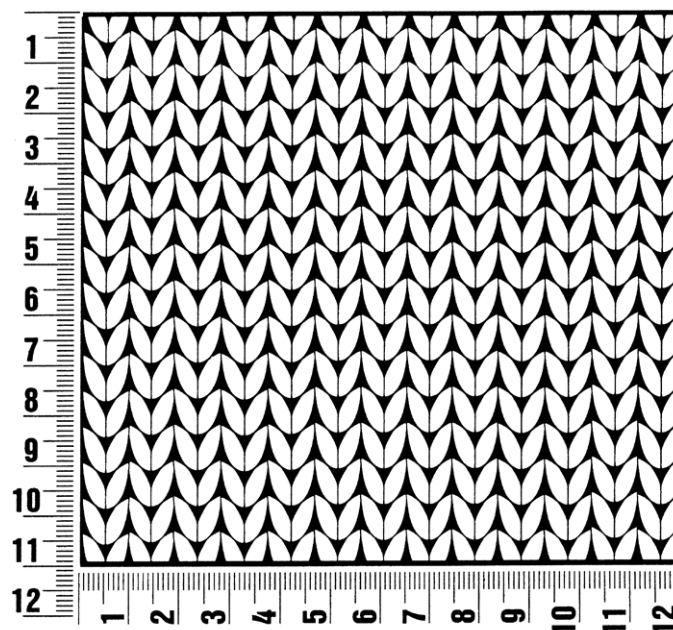


Back and front, half

Gauge Swatch

Before you begin ...

...make a gauge swatch. Use the recommended needles, yarns and pattern stitch for your gauge swatch. It should measure approx. 12 cm x 12 cm. Cast-on and bind-off rows, as well as selvage stitches should not be included in the measurement. Pin your swatch and block it as you would the finished pieces of the garment. Count stitches and rows over 10 cm. If your gauge swatch is too small, switch to larger needles. If your gauge swatch is too big, switch to smaller needles.



Abbreviations

beg = begin(ning) · **ch** = chain · **cont** = continue · **dec** = decreas(e)(ing) · **inc** = increas(e)(ing) · **k** = knit · **kwise** = as if to knit
meas = measures · **M1L** = lift strand between sts from front to back and knit this strand through the back loop · **M1R** = lift strand between sts from the back and knit this strand through the front loop · **patt** = pattern · **pm** = place marker · **p** = purl
pwise = as if to purl · **rem** = remain(ing) · **rep** = repeat(s) · **rev St st** = reverse stockinette stitch · **rnd(s)** = round(s) · **RS** = right side · **sc** = single crochet · **skp** = slip 1 stitch as if to knit, knit 1 stitch, pass slipped stitch over knitted stitch · **sk2p** = slip 1 stitch as if to knit, knit 2 together, pass slipped stitch over knitted stitch · **s2kp** = slip 2 stitches as if to knit, k 1 stitch, pass slipped stitches over knitted stitch · **sl** = slip · **st(s)** = stitch(es) · **St st** = stockinette stitch · **tbl** = through the back loop · **tog** = together · **wyib** = with yarn in back of work · **wyif** = with yarn in front of work · **WS** = wrong side · **yo(s)** = yarn over(s)

Publisher's Info

Publisher: Lana Grossa GmbH, Gaimersheim, www.lana-grossa.com

Photographer: Clara Nebeling