

LANA GROSSA



© Lana Grossa GmbH - Photo: Clara Nebeling

Design 26 – Classici 22

**PULLOVER
BACCA**

PULLOVER • BACCA

Design 26 – Classici 22



Size 36/38 (40/42, 44)

Instructions are given for first size. Figures in parenthesis refer to larger sizes. When only one figure is given, it applies to all sizes.

Materials: 400 (450, 500) g of Lana Grossa **Bacca** (100% cotton; 120 m/50 g) in Beige (**col 6**). Size 3.5 and 4.5 mm needles; size 3.5 mm circular needle, 40 cm long.

St st: K on RS, p on WS.

Garter st: K every row.

Selvaige sts: On every row: Knit first and last st.

Full-fashion decrease 1: At beg of RS row, selvaige st, k3, k2tog; at end of RS row, work to last 6 sts, skp, k3, selvaige st.

Full-fashion decrease 2: At beg of RS row, selvaige st, k1, k2tog; at end of RS row, work to last 4 sts, skp, k1, selvaige st.

Gauge: 20 sts and 27 rows = 10 x 10 cm in St st on size 4.5 mm needles.

Note: Back has a curved hem and is 6 cm longer than front; sleeves are picked up along armhole edge and worked down to cuff edge.

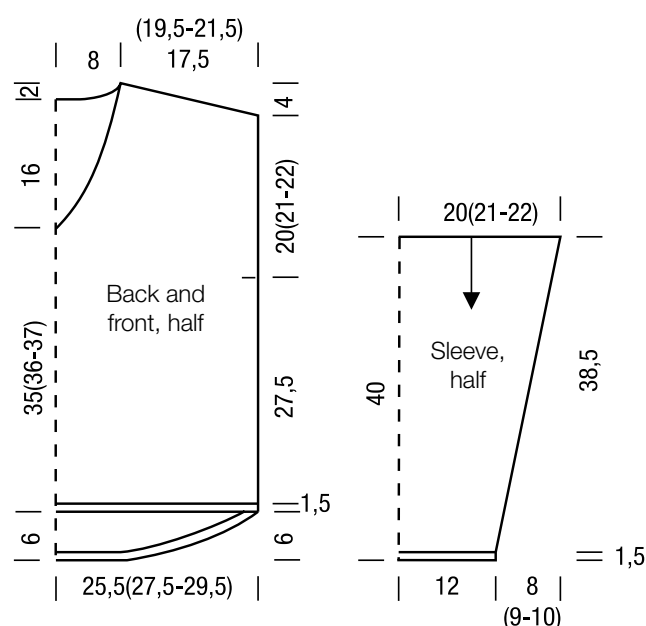
Back: With size 3.5 mm needles cast on 104 (112, 120) sts. Beg and end with a WS row work in garter st for 5 rows. Change to size 4.5 mm needles. Working first and last st as selvaige sts, work in St st and shape curved hem with short rows as foll: Row 1 (RS): Work 64 (68, 72) sts, turn. Row 2 (WS): Yo (yarnover right needle), work 29 (30, 30) sts, turn. Row 3 (RS): Yo, work 34 (36, 36) sts and ktog yo and next st, turn. Row 4 (WS): Yo, work 39 (42, 42) sts and ptog tbl yo and next st, turn. Row 5 (RS): Yo, work 44 (48, 48) sts and ktog yo and next st, turn. Row 6 (WS): Yo, work 49 (54, 54) sts and ptog tbl yo and next st, turn. Row 7 (RS): Yo, work 54 (60, 60) sts and ktog yo and next st, turn. Continue working short-rows in this manner, working 5 additional sts at end of next 5 WS and 5 RS rows (6 additional sts at end of next 4 WS and RS rows / 6 additional sts at end of next 5 WS and RS rows) = 104 (112, 120) sts. Cont in St st across all sts until piece meas 35 cm from cast-on. Place marker in first and last st on last WS row to indicate beg of armholes. Cont until piece meas 20 (21, 22) cm from armhole markers, ending with a WS row. Shape shoulders and neck: At each shoulder edge bind off 5 sts 6 times, 6 sts 1 time (5 sts 2 times, 6 sts 5 times / 6 sts 5 times, 7 sts 2 times) and when piece meas 57 (58, 59) cm from cast-on, shape neck as foll: Next row (RS): Bind off center 22 sts. Working each side separately, bind off 5 sts at each neck edge 1 time. No sts rem.

Front: With size 3.5 mm needles cast on 104 (112, 120) sts. Beg and end with a WS row work in garter st for 5 rows. Change to size 4.5 mm needles. Maintaining selvaige sts, work in St st until piece meas 29 cm from cast-on. Place marker in first and last st on last WS row to indicate beg of armholes. Cont until piece meas 35 (36, 37) cm from cast-on, ending with a WS row. Shape V-neck: Next row (RS): Divide work at center = 52 (56, 60) sts each side. Working each side separately and working full-fashion dec 1, dec 1 st at each neck edge every RS row 10 times, then every alt RS row 6 times and when same length as back to shoulders, shape shoulders same as for back. No sts rem.

Finishing 1: Pin pieces to measurements and block. Sew shoulder seams.

Sleeves: With size 4.5 mm needles and RS facing, pick up and k 78 (82, 86) sts evenly between armhole markers. Working first and last st as selvaige sts, work in St st and shape sleeve as foll: Working full-fashion dec 2, dec 1 st at each end of 5 (4, 4)th RS row, then every alt 6th and 8th row 13 times (then every 6th row 15 times / then every alt 4th and 6th row 9 times, then every 6th row 8 times) = 50 sts. Work even until piece meas 38.5 cm from pick-up row, ending with a WS row. Change to size 3.5 mm needles. Work in garter st for 6 rows. Bind off all sts.

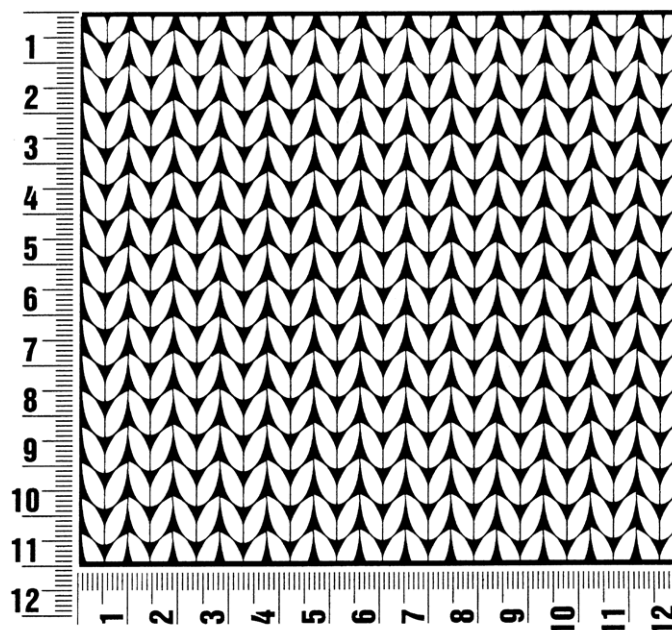
Finishing 2: Pin sleeves to measurements and block. **Neck-band:** With size 3.5 mm circular needle, pick up and k 130 sts evenly around neck edge. Place beg of rnd marker and join for working in rnds. Knit 2 rnds. Bind off all sts kwise. Sew side and sleeve seams.



Gauge Swatch

Before you begin ...

...make a gauge swatch. Use the recommended needles, yarns and pattern stitch for your gauge swatch. It should measure approx. 12 cm x 12 cm. Cast-on and bind-off rows, as well as selvage stitches should not be included in the measurement. Pin your swatch and block it as you would the finished pieces of the garment. Count stitches and rows over 10 cm. If your gauge swatch is too small, switch to larger needles. If your gauge swatch is too big, switch to smaller needles.



Abbreviations

beg = begin(ning) · **ch** = chain · **cont** = continue · **dec** = decreas(e)(ing) · **inc** = increas(e)(ing) · **k** = knit · **kwise** = as if to knit
meas = measures · **M1L** = lift strand between sts from front to back and knit this strand through the back loop · **M1R** = lift strand between sts from the back and knit this strand through the front loop · **patt** = pattern · **pm** = place marker · **p** = purl
pwise = as if to purl · **rem** = remain(ing) · **rep** = repeat(s) · **rev St st** = reverse stockinette stitch · **rnd(s)** = round(s) · **RS** = right side · **sc** = single crochet · **skp** = slip 1 stitch as if to knit, knit 1 stitch, pass slipped stitch over knitted stitch · **sk2p** = slip 1 stitch as if to knit, knit 2 together, pass slipped stitch over knitted stitch · **s2kp** = slip 2 stitches as if to knit, k 1 stitch, pass slipped stitches over knitted stitch · **sl** = slip · **st(s)** = stitch(es) · **St st** = stockinette stitch · **tbl** = through the back loop · **tog** = together · **wyib** = with yarn in back of work · **wyif** = with yarn in front of work · **WS** = wrong side · **yo(s)** = yarn over(s)

Publisher's Info

Publisher: Lana Grossa GmbH, Gaimersheim, www.lana-grossa.com

Photographer: Clara Nebeling