

# LANA GROSSA



© Lana Grossa GmbH - Foto: Wilfried Wulff, www.wilfriedwulff.com

Design 16 – Gomitolo 09

---

## **JACKET**

### **GOMITOLO SELEZIONE 2 & 3**



# JACKET ·

## GOMITOLO SELEZIONE 2 & 3

### Design 16 – Gomitolo 09



**Size** 36/38 (40/42, 44/46, 48/50)

Instructions are given for first size. Figures in parenthesis refer to larger sizes. When only one figure is given, it applies to all sizes.

**Materials:** 400 g of Lana Grossa **Gomitolo Selezione 2** (75% cotton, 25% viscose; 260 m/100 g) in Lilac/Antique Violet/Yellow/Mustard/Sand (**col 2006**) and 400 g of Lana Grossa **Gomitolo Selezione 3** (65% cotton, 35% acrylic; 270 m/100 g) Purple/Vanilla/Yolk/Burgundy/Light Grey/Dark Grey (**col 3002**). Size 4.5 and 5 mm needles.

**Note:** Work with 1 strand of each yarn held tog throughout = 2 strands held tog.

**Rib patt:** K1, p1.

**Main patt:** Multiple of 2. **Row 1 (RS):** \* K1, p1; rep from \*. **Rows 2 and 3:** Work sts as they appear. **Row 4:** Purl the knit sts, knit the purl sts. **Rows 5 and 6:** As rows 2 and 3. Rep rows 1 – 6.

**Two-stitch selvage:** At beg of row, sl 1 pwise, k1; at end of row, sl 1 pwise, k1.

**Gauge:** 16 sts and 24 rows = 10 x 10 cm in main patt with size 5 mm needles and 2 strands held tog.

**Back:** With size 4.5 mm needles and 2 strands held tog cast on 82 (88, 94, 100) sts. Work in rib patt for 4 cm, ending with a WS row. Change to size 5 mm needles. Work in main patt for 19 cm. Place marker in first and last st on last WS row to indicate beg of armholes. Cont in patt until piece meas 17 (19, 21, 23) cm from armhole markers, ending with a WS row. Shape shoulders and neck: At each shoulder edge bind off 4 sts 5 (5, 5, 2) times, 3 (4, 5, 5) sts 3 times, 5 sts 0 (0, 0) 3

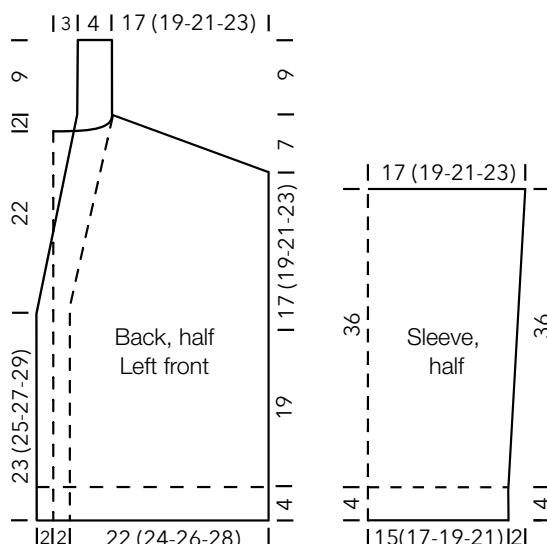
times. At same time, when piece meas 5 cm from beg of shoulder shaping, shape neck as foll: Next row (RS): Bind off center 18 sts. Working each side separately, bind off 1 st at each neck edge 3 times. No sts rem.

**Left front:** With size 4.5 mm needles and 2 strands held tog cast on 46 (50, 52, 56) sts. Working last 2 sts at end of RS rows and first 2 sts at beg of WS rows as two-stitch selvage, work in rib patt for 4 cm, ending with a WS row. Change to size 5 mm needles. Next row (RS): Work main patt over first 38 (42, 44, 48) sts, work next 6 sts in rib patt as established, two-stitch selvage. Cont in patt as set by last row until piece meas 23 (25, 27, 29) cm from cast-on, ending with a WS row. Shape neck: Next RS (dec) row: Patt to last 10 sts, k2tog, patt to end. Rep dec row every 6th row 7 times = 38 (42, 44, 48) sts. At same time, when same length as back to armhole, place armhole marker at right edge and when same length as back to shoulder, shape shoulder as foll: At beg of RS rows, bind off 4 sts 5 (4, 5 1) time(s), 3 (4, 5, 5) sts 3 times, 5 sts 0 (1, 0, 4) time(s) = 9 sts rem for neckband. Cont in patt over neckband sts for 9 cm. Bind off.

**Right front:** Work same as left front, reversing all shaping and patt placement.

**Sleeves:** With size 4.5 mm needles and 2 strands held tog cast on 52 (58, 64, 70) sts. Work in rib patt for 4 cm, ending with a WS row. Change to size 5 mm needles. [Work in main patt for 9 cm, ending with a WS row. Shape sleeve: Inc 1 st at each end of next RS row] 3 times = 58 (64, 70, 76) sts. Work even until piece meas 36 cm from end of rib patt. Bind off all sts.

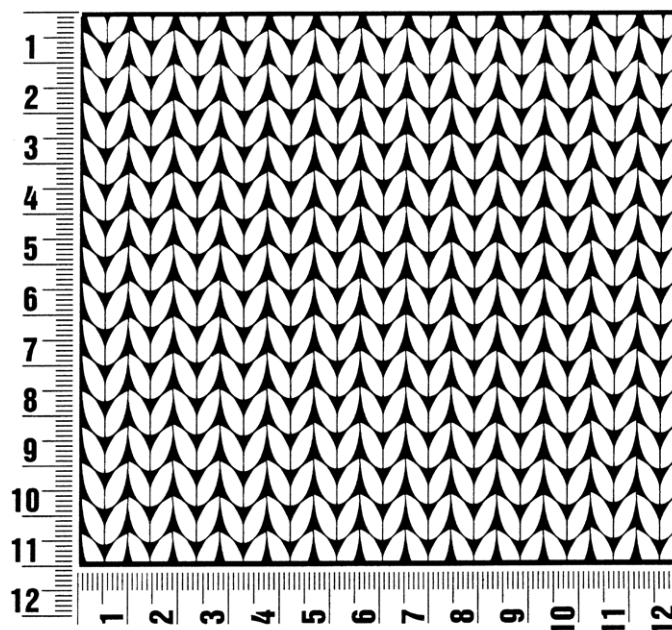
**Finishing:** Pin pieces to measurements and block. Sew shoulder seams. Sew bound-off edges of neckbands tog, then sew neckband to back neck. Sew on sleeves between markers. Sew side and sleeve seams.



## Gauge Swatch

### Before you begin ...

...make a gauge swatch. Use the recommended needles, yarns and pattern stitch for your gauge swatch. It should measure approx. 12 cm x 12 cm. Cast-on and bind-off rows, as well as selvage stitches should not be included in the measurement. Pin your swatch and block it as you would the finished pieces of the garment. Count stitches and rows over 10 cm. If your gauge swatch is too small, switch to larger needles. If your gauge swatch is too big, switch to smaller needles.



## Abbreviations

**beg** = begin(ning) · **ch** = chain · **cont** = continue · **dec** = decreas(e)(ing) · **inc** = increas(e)(ing) · **k** = knit · **kwise** = as if to knit  
**meas** = measures · **M1L** = lift strand between sts from front to back and knit this strand through the back loop · **M1R** = lift strand between sts from the back and knit this strand through the front loop · **patt** = pattern · **pm** = place marker · **p** = purl  
**pwise** = as if to purl · **rem** = remain(ing) · **rep** = repeat(s) · **rev St st** = reverse stockinette stitch · **rnd(s)** = round(s) · **RS** = right side · **sc** = single crochet · **skp** = slip 1 stitch as if to knit, knit 1 stitch, pass slipped stitch over knitted stitch · **sk2p** = slip 1 stitch as if to knit, knit 2 together, pass slipped stitch over knitted stitch · **s2kp** = slip 2 stitches as if to knit, k 1 stitch, pass slipped stitches over knitted stitch · **sl** = slip · **st(s)** = stitch(es) · **St st** = stockinette stitch · **tbl** = through the back loop · **tog** = together · **wyib** = with yarn in back of work · **wyif** = with yarn in front of work · **WS** = wrong side · **yo(s)** = yarn over(s)

### Publisher's Info

**Publisher:** Lana Grossa GmbH, Gaimersheim, [www.lana-grossa.com](http://www.lana-grossa.com)

**Photographer:** Wilfried Wulff, [www.wilfriedwulff.com](http://www.wilfriedwulff.com)