

# LANA GROSSA



© Lana Grossa GmbH - Photo: Wilfried Wulff, [www.wilfriedwulff.com](http://www.wilfriedwulff.com)

Design 17 – Gomitolo 09

---

**PULLOVER**  
**GOMITOLO SELEZIONE 3 & SILKHAIR**

# PULLOVER · GOMITOLO SELEZIONE 3 & SILKHAIR

## Design 17 – Gomitolo 09



**Size** 36/38 (40/42, 44/46, 48/50)

Instructions are given for first size. Figures in parenthesis refer to larger sizes. When only one figure is given, it applies to all sizes.

**Materials:** 300 (400, 400, 400) g of Lana Grossa **Gomitolo Selezione 3** (65% cotton, 35% acrylic; 270 m/100 g) Fuchsia/Pale Green/Dark Green/Mint/Orange/Brown (**col 3006**) and 100 (125, 125, 150) g of Lana Grossa **Silkhair** (70% superkid mohair, 30% silk; 210 m/25 g) in White (**col 117**). Size 5 and 5.5 mm needles; short size 5 mm circular needle.

**Note:** Work with 1 strand of each yarn held tog throughout = 2 strands held tog.

**Rib patt:** K1, p1.

**St st:** K on RS, p on WS.

**Gauge:** 16 sts and 24 rows = 10 x 10 cm in St st on size 5.5 mm needles.

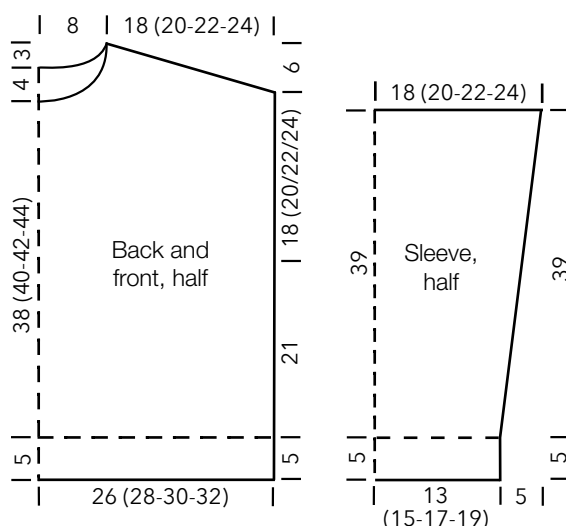
**Back:** With size 5 mm needles and 2 strands held tog cast on 86 (92, 98, 104) sts. Work in rib patt for 5 cm, ending with a WS row. Change to size 5.5 mm needles. Work in St st for 21 cm. Place marker in first and last st on last WS row to indicate beg of armholes. Cont until piece meas 18 (20, 22, 24) cm from armhole markers, ending with a WS row. Shape

shoulders and neck: At each shoulder edge bind off 4 sts 6 (3, 0, 0) times, 5 sts 1 (4, 7, 4) time(s), 6 sts 0 (0, 0, 3) times. At same time, when piece meas 3 cm from beg of shoulder shaping, shape neck as foll: Next row (RS): Bind off center 18 sts. Working each side separately, bind off 1 st at each neck edge 5 times. No sts rem.

**Front:** Work same as back until piece meas 17 (19, 21, 23) cm from armhole markers, ending with a WS row. Shape neck: Next row (RS): Bind off center 12 sts. Working each side separately, bind off 1 st at each neck edge 8 times and when same length as back to shoulders, shape shoulders same as for back. No sts rem.

**Sleeves:** With size 5 mm needles and 2 strands held tog cast on 44 (50, 56, 62) sts. Work in rib patt for 5 cm, ending with a WS row. Change to size 5.5 mm needles. [Work in St st for 4 cm, ending with a WS row. Shape sleeve: Inc 1 st at each end of next RS row] 9 times = 62 (68, 74, 80) sts. Work even until piece meas 39 cm from end of rib patt. Bind off all sts.

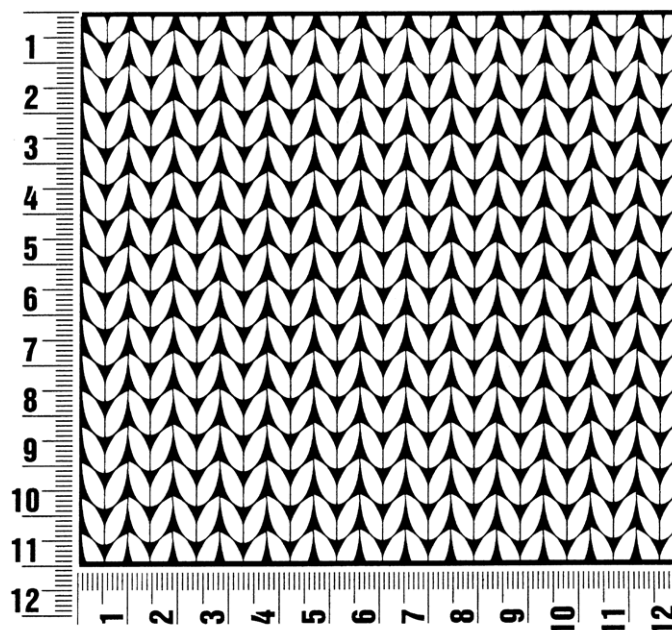
**Finishing:** Pin pieces to measurements and block. Sew shoulder seams. **Neckband:** With size 5 mm circular needle, pick up and k 102 sts evenly around neck edge. Place beg of rnd marker and join for working in rnds. Purl 1 rnd. Work rib patt in rnds for 2 cm. Next rnd: K2tog and bind off at the same time. Sew on sleeves between markers. Sew side and sleeve seams.



## Gauge Swatch

### Before you begin ...

...make a gauge swatch. Use the recommended needles, yarns and pattern stitch for your gauge swatch. It should measure approx. 12 cm x 12 cm. Cast-on and bind-off rows, as well as selvage stitches should not be included in the measurement. Pin your swatch and block it as you would the finished pieces of the garment. Count stitches and rows over 10 cm. If your gauge swatch is too small, switch to larger needles. If your gauge swatch is too big, switch to smaller needles.



## Abbreviations

**beg** = begin(ning) · **ch** = chain · **cont** = continue · **dec** = decreas(e)(ing) · **inc** = increas(e)(ing) · **k** = knit · **kwise** = as if to knit  
**meas** = measures · **M1L** = lift strand between sts from front to back and knit this strand through the back loop · **M1R** = lift strand between sts from the back and knit this strand through the front loop · **patt** = pattern · **pm** = place marker · **p** = purl  
**pwise** = as if to purl · **rem** = remain(ing) · **rep** = repeat(s) · **rev St st** = reverse stockinette stitch · **rnd(s)** = round(s) · **RS** = right side · **sc** = single crochet · **skp** = slip 1 stitch as if to knit, knit 1 stitch, pass slipped stitch over knitted stitch · **sk2p** = slip 1 stitch as if to knit, knit 2 together, pass slipped stitch over knitted stitch · **s2kp** = slip 2 stitches as if to knit, k 1 stitch, pass slipped stitches over knitted stitch · **sl** = slip · **st(s)** = stitch(es) · **St st** = stockinette stitch · **tbl** = through the back loop · **tog** = together · **wyib** = with yarn in back of work · **wyif** = with yarn in front of work · **WS** = wrong side · **yo(s)** = yarn over(s)

### Publisher's Info

**Publisher:** Lana Grossa GmbH, Gaimersheim, [www.lana-grossa.com](http://www.lana-grossa.com)

**Photographer:** Wilfried Wulff, [www.wilfriedwulff.com](http://www.wilfriedwulff.com)