

# LANA GROSSA



© Lana Grossa GmbH - Photo: Wilfried Wulff, [www.wilfriedwulff.com](http://www.wilfriedwulff.com)

Design 22 – Gomitolo 09

---

**STOLE**  
**GOMITOLO SELEZIONE 3**

# STOLE · GOMITOLO SELEZIONE 3

## Design 22 – Gomitolo 09



**Size** approx. 66 x 180 cm

**Materials:** 500 g of Lana Grossa **Gomitolo Selezione 3** (65% cotton, 35% acrylic; 270 m/100 g) Grey Blue/Light Blue/Jeans/Grey/Silver Grey/Grey Green/Grey Purple (**col 3004**). Size 4 mm needles.

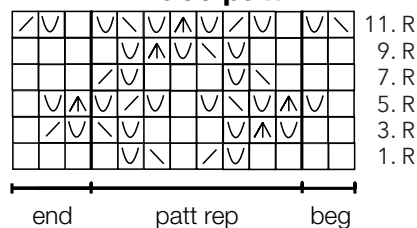
**Garter st:** Row 1: Sl 1 kwise, k to end of row. Rep row 1 throughout.

**Lace patt:** Work according to chart. Multiple of 8 + 5. Numbers at right edge of chart indicate RS rows; on WS rows purl all sts and yos. Work 2 sts to patt rep, work 8-st patt rep 16 times, work 3 sts after patt rep. Rep rows 1 – 12.




**Gauge:** 22 sts and 30 rows = 10 x 10 cm in lace patt on size 4 mm needles.


**Stole:** With size 4 mm needles cast on 147 sts. Work in garter st for 3 cm, ending with a WS row. Next row (RS): Work first 7 sts in garter st as established, work lace patt over next 133 sts, work last 7 sts in garter st as established. Work in patt as set by last row until piece meas 177 cm from cast-on, ending with a WS row. Work in garter st across all sts for 3 cm. Bind off all sts.


**Lace patt**



**Chart key:**

-  = sk2p: sl 1 kwise, k1, pass slipped st over knitted st
-  = skp: sl 1 kwise, k1, pass slipped st over knitted st
-  = k2tog

 = k1

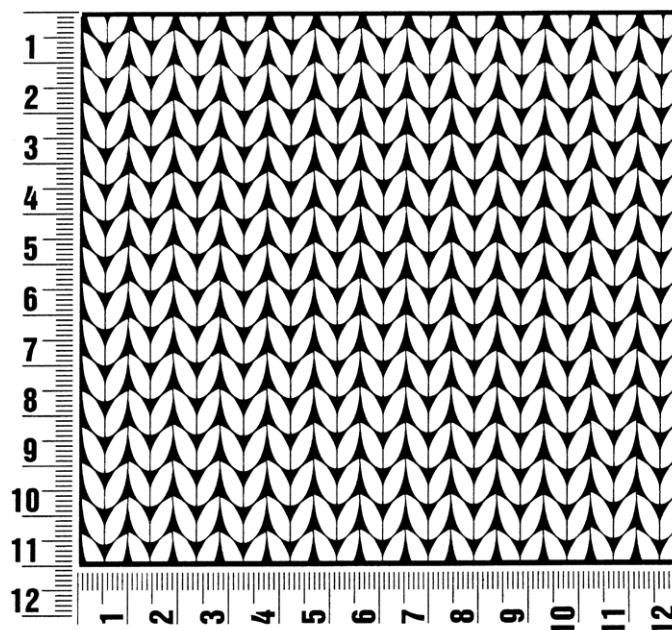
 = yo



## Gauge Swatch

### Before you begin ...

...make a gauge swatch. Use the recommended needles, yarns and pattern stitch for your gauge swatch. It should measure approx. 12 cm x 12 cm. Cast-on and bind-off rows, as well as selvage stitches should not be included in the measurement. Pin your swatch and block it as you would the finished pieces of the garment. Count stitches and rows over 10 cm. If your gauge swatch is too small, switch to larger needles. If your gauge swatch is too big, switch to smaller needles.



## Abbreviations

**beg** = begin(ning) · **ch** = chain · **cont** = continue · **dec** = decreas(e)(ing) · **inc** = increas(e)(ing) · **k** = knit · **kwise** = as if to knit  
**meas** = measures · **M1L** = lift strand between sts from front to back and knit this strand through the back loop · **M1R** = lift strand between sts from the back and knit this strand through the front loop · **patt** = pattern · **pm** = place marker · **p** = purl  
**pwise** = as if to purl · **rem** = remain(ing) · **rep** = repeat(s) · **rev St st** = reverse stockinette stitch · **rnd(s)** = round(s) · **RS** = right side · **sc** = single crochet · **skp** = slip 1 stitch as if to knit, knit 1 stitch, pass slipped stitch over knitted stitch · **sk2p** = slip 1 stitch as if to knit, knit 2 together, pass slipped stitch over knitted stitch · **s2kp** = slip 2 stitches as if to knit, k 1 stitch, pass slipped stitches over knitted stitch · **sl** = slip · **st(s)** = stitch(es) · **St st** = stockinette stitch · **tbl** = through the back loop · **tog** = together · **wyib** = with yarn in back of work · **wyif** = with yarn in front of work · **WS** = wrong side · **yo(s)** = yarn over(s)

### Publisher's Info

**Publisher:** Lana Grossa GmbH, Gaimersheim, [www.lana-grossa.com](http://www.lana-grossa.com)

**Photographer:** Wilfried Wulff, [www.wilfriedwulff.com](http://www.wilfriedwulff.com)