

LANA GROSSA



© Lana Grossa GmbH - Photo: Wilfried Wulff, www.wilfriedwulff.com

Design 25 – Gomitolo 09

GRANNY-JACKET GOMITOLO ALOHA

GRANNY JACKET · GOMITOLO ALOHA



Design 25 – Gomitolo 09

Size 38/40 (46/48)

Instructions are given for smaller size. Figure in parenthesis refers to larger size. When only one figure is given, it applies to both sizes.

Materials: 400 g each of Lana Grossa **Gomitolo Aloha** (50% cotton, 50% viscose; 250 m/100 g) in Yolk/Curry/Orange/Violet/Grey Purple/Cinnamon/Yellow Green (**col 316**) and Peach/Orange/Pumpkin/Grey Blue/Blue Violet/Mocha (**col 317**). Size 4 mm crochet hook.

Granny square: Work according to chart. Numbers on chart indicate rnds. Beg with ch 5, sl st in first ch to form ring. Work rnd 1 into ring. Beg rnd with ch 3 (counts as dc), sl st in top of beg ch-3 to join. Change color, beg next rnd with sl st. Work 3 dc, ch 2, 3 dc in each corner, work dc groups into ch-sp on rnd below. Change color after every rnd. Fasten off at end of rnd 4. Begin one half of the granny squares with col 316, second half with col 317, change colors within the square as desired.

Gauge: One square meas approx. 9 x 9 cm.

Back: Crochet 42 (49) squares. Referring to schematic for placement, sew squares tog or join with sl st.

Left front: Crochet 21 squares. Referring to schematic for placement, sew squares tog or join with sl st.

Right front: Work same as left front.

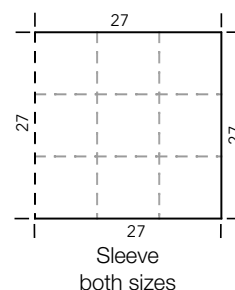
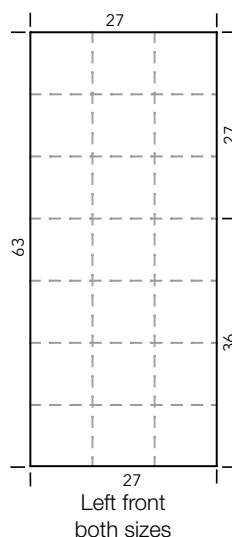
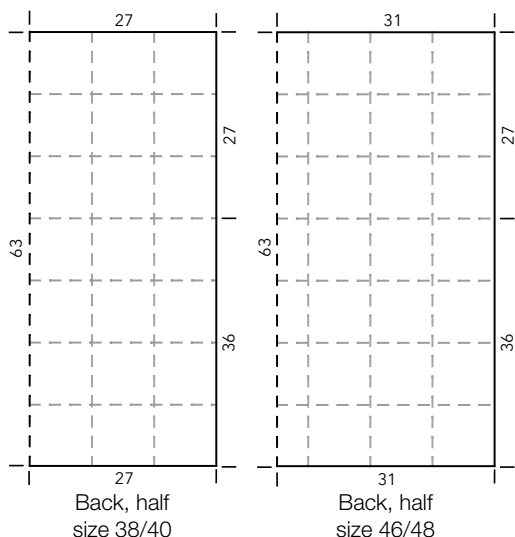
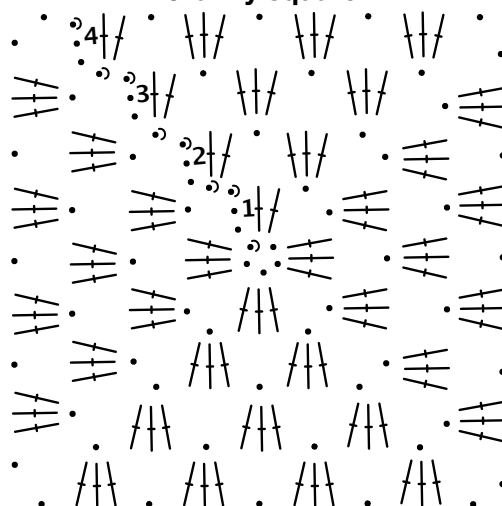
Sleeves: Crochet 18 squares. Referring to schematic for placement, sew squares tog or join with sl st.

Finishing: Sew shoulder seams over 18 – 27 cm for best fit. Place markers 27 cm down from shoulders on fronts and back. Sew on sleeves between markers. Sew side and sleeve seams. If desired, work 1 rnd sl st around entire edge of jacket.

Chart key:

- = chain (ch)
- ⌋ = slip stitch (sl st)
- ↑ = double crochet (dc)

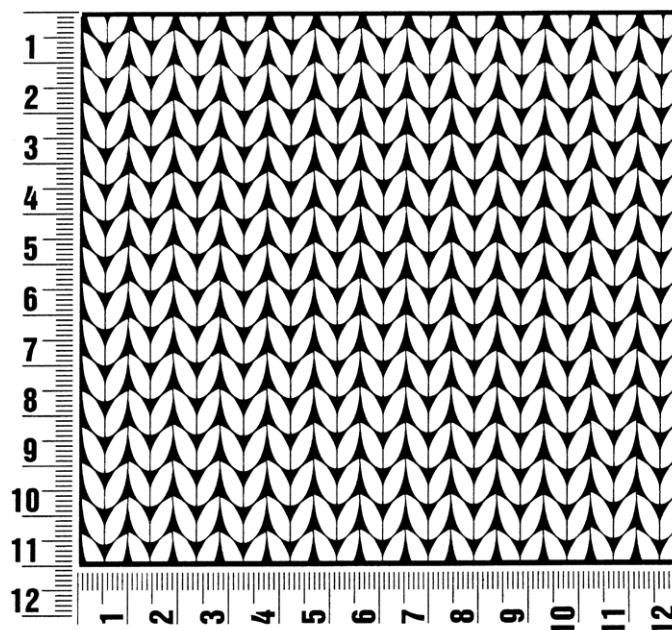
Granny square



Gauge Swatch

Before you begin ...

...make a gauge swatch. Use the recommended needles, yarns and pattern stitch for your gauge swatch. It should measure approx. 12 cm x 12 cm. Cast-on and bind-off rows, as well as selvage stitches should not be included in the measurement. Pin your swatch and block it as you would the finished pieces of the garment. Count stitches and rows over 10 cm. If your gauge swatch is too small, switch to larger needles. If your gauge swatch is too big, switch to smaller needles.



Abbreviations

beg = begin(ning) · **ch** = chain · **cont** = continue · **dec** = decreas(e)(ing) · **inc** = increas(e)(ing) · **k** = knit · **kwise** = as if to knit
meas = measures · **M1L** = lift strand between sts from front to back and knit this strand through the back loop · **M1R** = lift strand between sts from the back and knit this strand through the front loop · **patt** = pattern · **pm** = place marker · **p** = purl
pwise = as if to purl · **rem** = remain(ing) · **rep** = repeat(s) · **rev St st** = reverse stockinette stitch · **rnd(s)** = round(s) · **RS** = right side · **sc** = single crochet · **skp** = slip 1 stitch as if to knit, knit 1 stitch, pass slipped stitch over knitted stitch · **sk2p** = slip 1 stitch as if to knit, knit 2 together, pass slipped stitch over knitted stitch · **s2kp** = slip 2 stitches as if to knit, k 1 stitch, pass slipped stitches over knitted stitch · **sl** = slip · **st(s)** = stitch(es) · **St st** = stockinette stitch · **tbl** = through the back loop · **tog** = together · **wyib** = with yarn in back of work · **wyif** = with yarn in front of work · **WS** = wrong side · **yo(s)** = yarn over(s)

Publisher's Info

Publisher: Lana Grossa GmbH, Gaimersheim, www.lana-grossa.com

Photographer: Wilfried Wulff, www.wilfriedwulff.com