

LANA GROSSA



© Lana Grossa GmbH

Design 11 – Tücher & Co. 06

SCARF
LACE SETA MULBERRY

SCARF · LACE SETA MULBERRY

Design 11 – Tücher & Co. 06



Size approx. 30 x 200 cm

Materials: 250 g of Lana Grossa **Lace Seta Mulberry** (35% Mulberry silk, 35% baby Alpaca, 30% superfine Merino wool; 175 m/50 g) in Light Grey (**col 25**), 50 g each in Yellow Green (**col 27**), Dark Petrol (**col 18**) and Pastel Blue (**col 24**). Size 4 and 5 mm needles; size 4 mm crochet hook for fringe.

Slip stitch patt: Work according to chart 1. Multiple of 3 + 1 + 4 selvage sts. NOTE: Selvage sts are not included on chart. Numbers at right edge of chart indicate RS rows, numbers at left edge of chart indicate WS rows. Work rows [1 – 6] 3 times, then work rows 1 and 2 once more = 20 rows.

Lace patt: Work according to chart 2. Multiple of 6 + 1 + 4 selvage sts. NOTE: Selvage sts are not included on chart. Numbers at right edge of chart indicate RS rows; on WS rows, work sts as they appear, purl all yos. Rep rows 1 – 8.

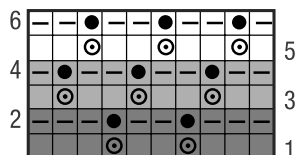
Two-stitch selvage: On RS row, sl 1 pwise wyib, k1, patt to last 2 sts, k1, sl 1 pwise wyib. On WS row, p1, sl 1 pwise wyif, patt to last 2 sts, sl 1 pwise wyif, p1.

Gauges: 23 sts and 36.5 rows = 10 x 10 cm in lace patt on size 4 mm needles; 23 sts and 50 rows = 10 x 10 cm in slip st patt on size 5 mm needles.

Scarf: With size 5 mm needles and Dark Petrol cast on 71 sts. * Next row (RS): Two-stitch selvage; work row 1 of chart 1 = work to patt rep, work patt rep 20 times, work to end of chart; two-stitch selvage. Maintaining selvage sts, cont to foll chart 1, work rows [1 – 6] 3 times, then work rows 1 and 2 once more for a total of 20 rows. Change to size 4 mm needles and Light Grey. Next row (RS): Two-stitch selvage; work row 1 of chart 2 = work to patt rep, work patt rep 10 times, work to end of chart; two-stitch selvage. Maintaining selvage sts, cont to foll chart 2, work chart rows 1 – 8 a total of 11 times = 88 rows. Change to size 5 mm needles and Dark Petrol. Rep from * 6 more times. Change to size 5 mm needles and Dark Petrol. Maintaining selvage sts, work chart 1 for 20 rows. Bind off all sts.

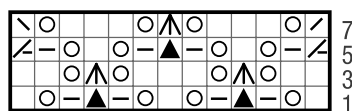
Finishing: Pin piece to measurements and block. **Fringe:** For each fringe, cut 3 strands of yarn (1 strand each Yellow Green, Dark Petrol and Pastel Blue), each strand approx. 40 cm long. Insert crochet hook into fabric from WS, fold 3 strands of yarn in half to form a loop, draw loop through fabric, then draw yarn ends through loop and tighten. Attach fringe evenly spaced along cast-on and bound-off edge.

Chart 1



↑ ↑
3-st rep

Chart 2



↑ ↑
6-st rep

Chart key:

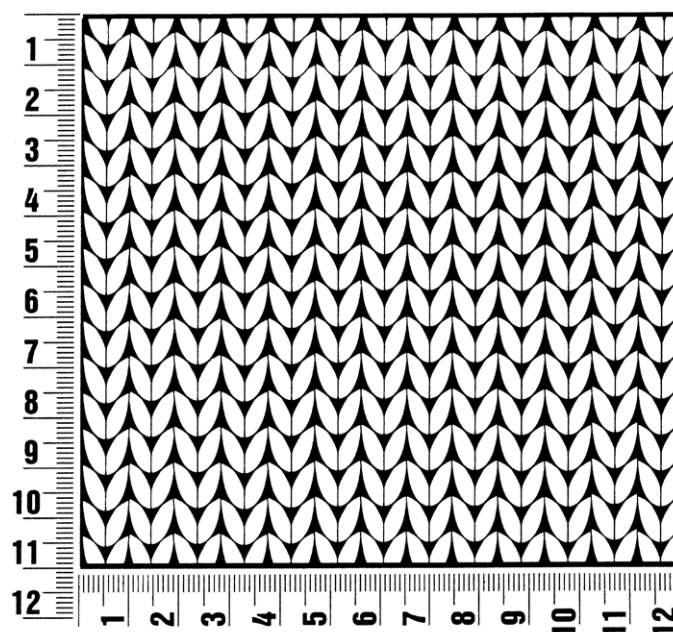
□ = Pastel Blue
■ = Yellow Green
■ = Dark Petrol

□ = k1
□ = p1
⊙ = sl 1 pwise wyib
● = sl 1 pwise wyif
○ = yo
/ = k2tog
/ = p2tog
△ = sk2p: sl 1 kwise, k2tog, pass slipped st over knitted st
▲ = p3tog

Gauge Swatch

Before you begin ...

...make a gauge swatch. Use the recommended needles, yarns and pattern stitch for your gauge swatch. It should measure approx. 12 cm x 12 cm. Cast-on and bind-off rows, as well as selvedge stitches should not be included in the measurement. Pin your swatch and block it as you would the finished pieces of the garment. Count stitches and rows over 10 cm. If your gauge swatch is too small, switch to larger needles. If your gauge swatch is too big, switch to smaller needles.



Abbreviations

beg = begin(ning) · **ch** = chain · **cont** = continue · **dec** = decreas(e)(ing) · **inc** = increas(e)(ing) · **k** = knit · **kwise** = as if to knit
meas = measures · **M1L** = lift strand between sts from front to back and knit this strand through the back loop · **M1R** = lift strand between sts from the back and knit this strand through the front loop · **patt** = pattern · **pm** = place marker · **p** = purl
pwise = as if to purl · **rem** = remain(ing) · **rep** = repeat(s) · **rev St st** = reverse stockinette stitch · **rnd(s)** = round(s) · **RS** = right side · **sc** = single crochet · **skp** = slip 1 stitch as if to knit, knit 1 stitch, pass slipped stitch over knitted stitch · **sk2p** = slip 1 stitch as if to knit, knit 2 together, pass slipped stitch over knitted stitch · **s2kp** = slip 2 stitches as if to knit, k 1 stitch, pass slipped stitches over knitted stitch · **sl** = slip · **st(s)** = stitch(es) · **St st** = stockinette stitch · **tbl** = through the back loop · **tog** = together · **wyib** = with yarn in back of work · **wyif** = with yarn in front of work · **WS** = wrong side · **yo(s)** = yarn over(s)

Publisher's Info

Publisher: Lana Grossa GmbH, Gaimersheim, www.lana-grossa.com

Photographer: Wilfried Wulff, www.wilfriedwulff.com