

# LANA GROSSA



© Lana Grossa GmbH

Design 17a/b – Tücher & Co. 06

---

**SHAWL**  
**CASHMERE LOVE**

# SHAWL · CASHMERE LOVE

## Design 17a/b – Tücher & Co. 06



**Size** 158 (134) cm in diameter

Instructions are given for larger size. Figure in parenthesis refers to smaller size. When only one figure is given, it applies to both sizes.

**Materials:** Lana Grossa **Cashmere Love** (50% cashmere, 50% cotton; 112 m/25 g).

**17a:** 325 g in Red (col 7).

**17b:** 225 g in Light Grey (col 11).

Size 3.5 mm circular needle, 80 cm long; additional size 3.5 mm circular needle and smooth contrast yarn for open cast-on; size 3.5 mm crochet hook.

**St st:** K on RS, p on WS.

**Garter st:** K every row.

**Chart patt:** Work according to chart 2 (1). Numbers at right edge of charts indicate RS rows; on WS rows, purl all sts and yos or work according to chart key. Yos in garter st edge at right edge of work are worked as k1 on WS rows.

**Selvage st:** On every row: Sl first st pwise wyib, knit last st.

**Short rows:** Turn work after having worked the number of sts shown on chart. Sl 1 st as if to purl with yarn in front of work, bring yarn to back of work over top of the needle and pull it very tightly; this will rotate the st to the back of the needle, creating a 'double stitch'. When working across all

sts on chart row 113 (87) knit both loops of the 'double stitch' tog as you come to them, that is: work each double stitch as one stitch.

**Gauge:** 22 sts and 35 rows = 10 x 10 cm in St st on size 3.5 mm needles.

**Note:** Shawl consists of 8 segments and is shaped with short rows. For a larger shawl, simply work additional segments. Adjust yarn requirements accordingly.

**Shawl:** With size 3.5 mm circular needle cast on 173 (134) sts using the open cast-on method. Purl 1 WS row. Continue with main yarn; contrast yarn is removed later. Work first segment: Work 57 (56) sts of chart 2 (1), 115 (77) sts in St st, selvage st. Cont in patt as established, foll chart through row 112 (86). Every RS row is worked as a short row. Work rows 113 – 116 (87 – 90) across all sts, knitting both loops of the 'double stitch' tog as you come to them when working row 113 (87) = 173 (134) sts. Work a total of 8 segments in this manner, end-ing last segment on chart row 112 (86). Next, work top border as foll: Knit across last 172 (133) sts, pick up and k 1 st in each of next 14 garter ridges, carefully remove contrast yarn, place live sts on spare needle, k173 (147). Work in garter st for 7 rows. Loosely bind off all sts. Using size 3.5 mm crochet hook, work 1 row sl st along bound-off edge.

**Finishing:** Pin piece to measurements and block. Carefully weave in all ends.

## Tip

### Open cast-on

Cut a strand of contrast yarn about four times the required width. With the working yarn, make a slip knot and place it on two needles.

Hold the contrast yarn beside the slip knot and take the working yarn under it and over the needles from front to back. Bring the working yarn in front of the contrast yarn.

Repeat last step until all the stitches are cast on. Take out one needle before knitting the first row. Remove the contrast yarn only when you are ready to pick up stitches along the edge.

# SHAWL · CASHMERE LOVE

Design 17a/b – Tücher & Co. 06

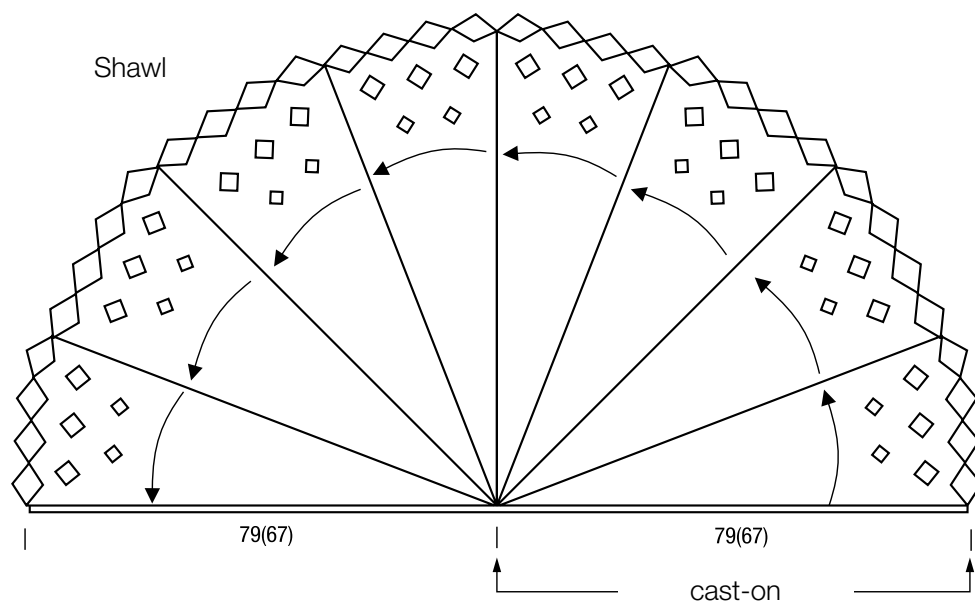
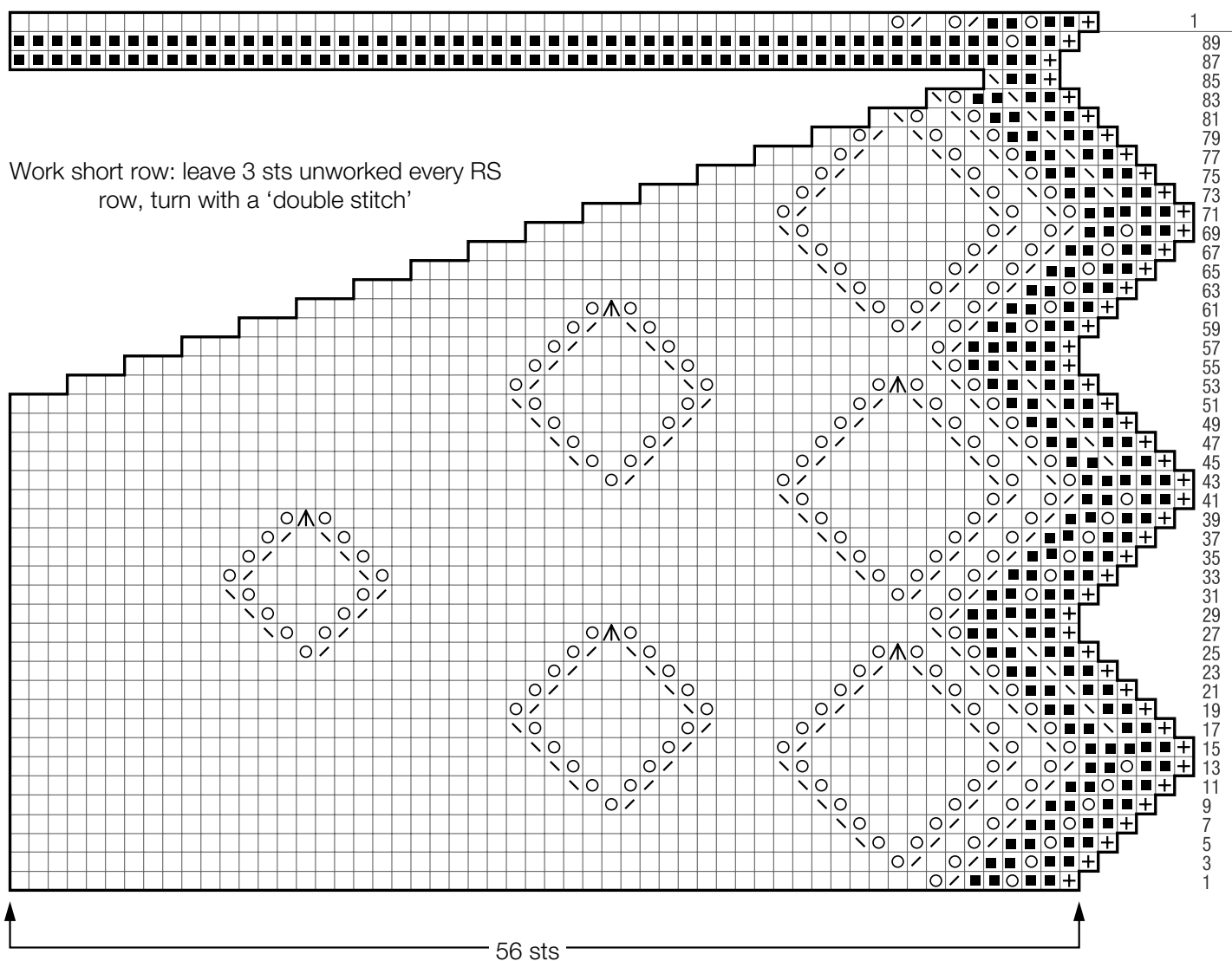


Chart 1

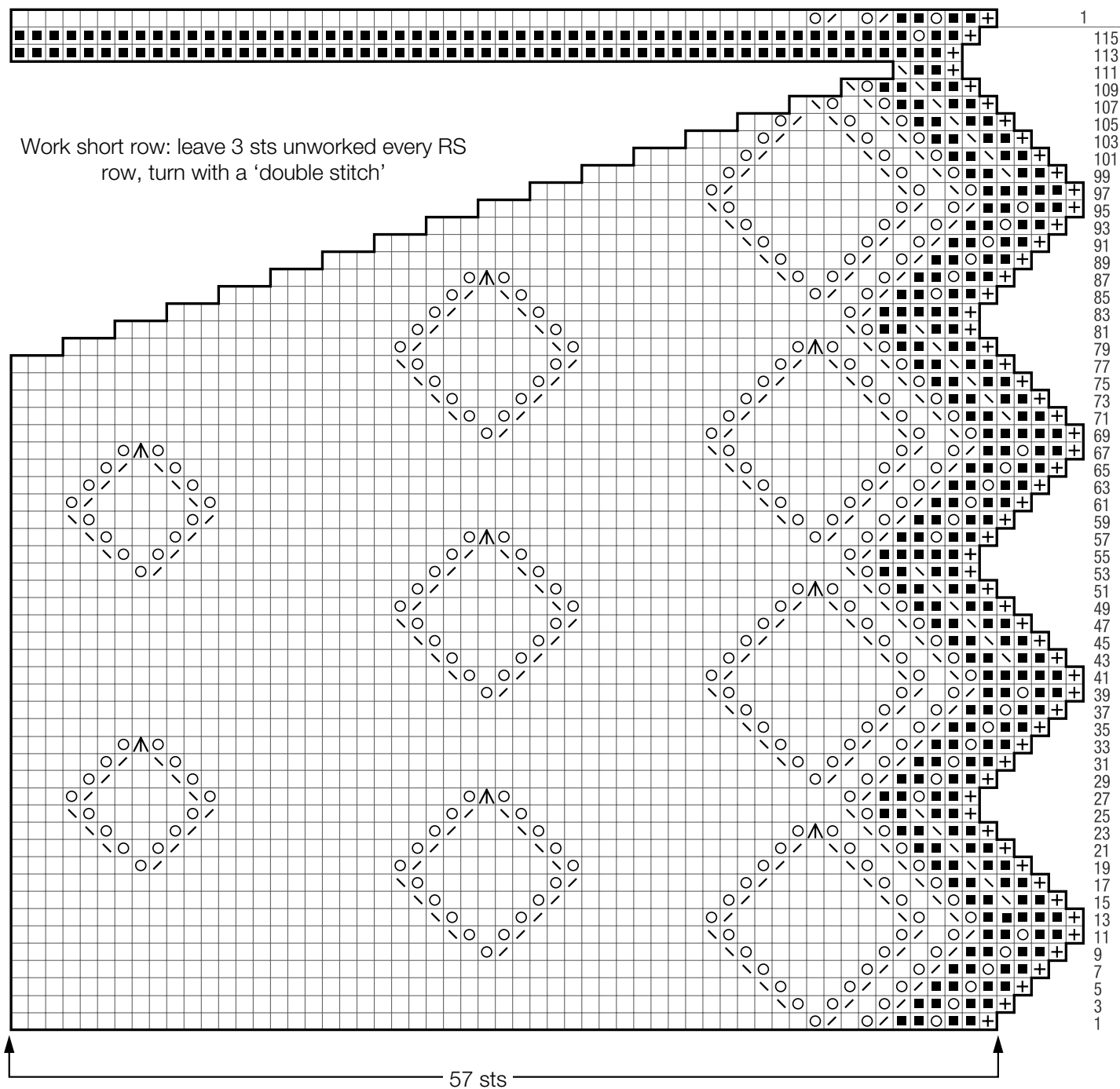


# SHAWL · CASHMERE LOVE

Design 17a/b – Tücher & Co. 06



Chart 2



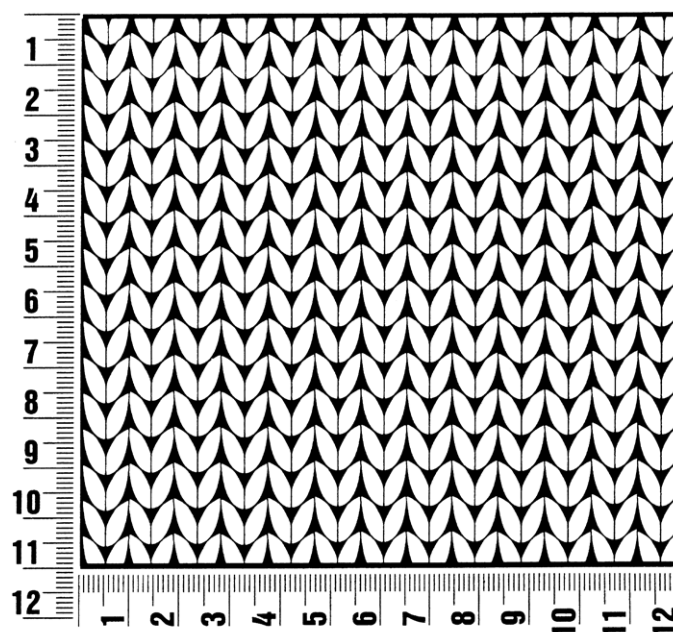
## Chart key:

- ⊕ = selvage st: sl 1 pwise wyib on RS, k1 on WS
- = k1
- = k1 every row
- = yo on RS, p1 on WS
- ◊ = k2tog
- ◌ = skp: sl 1 kwise, k1, pass slipped st over knitted st
- △ = s2kp: sl 2 kwise, k1, pass slipped sts over knitted st

## Gauge Swatch

### Before you begin ...

...make a gauge swatch. Use the recommended needles, yarns and pattern stitch for your gauge swatch. It should measure approx. 12 cm x 12 cm. Cast-on and bind-off rows, as well as selvage stitches should not be included in the measurement. Pin your swatch and block it as you would the finished pieces of the garment. Count stitches and rows over 10 cm. If your gauge swatch is too small, switch to larger needles. If your gauge swatch is too big, switch to smaller needles.



## Abbreviations

**beg** = begin(ning) · **ch** = chain · **cont** = continue · **dec** = decreas(e)(ing) · **inc** = increas(e)(ing) · **k** = knit · **kwise** = as if to knit  
**meas** = measures · **M1L** = lift strand between sts from front to back and knit this strand through the back loop · **M1R** = lift strand between sts from the back and knit this strand through the front loop · **patt** = pattern · **pm** = place marker · **p** = purl  
**pwise** = as if to purl · **rem** = remain(ing) · **rep** = repeat(s) · **rev St st** = reverse stockinette stitch · **rnd(s)** = round(s) · **RS** = right side · **sc** = single crochet · **skp** = slip 1 stitch as if to knit, knit 1 stitch, pass slipped stitch over knitted stitch · **sk2p** = slip 1 stitch as if to knit, knit 2 together, pass slipped stitch over knitted stitch · **s2kp** = slip 2 stitches as if to knit, k 1 stitch, pass slipped stitches over knitted stitch · **sl** = slip · **st(s)** = stitch(es) · **St st** = stockinette stitch · **tbl** = through the back loop · **tog** = together · **wyib** = with yarn in back of work · **wyif** = with yarn in front of work · **WS** = wrong side · **yo(s)** = yarn over(s)

### Publisher's Info

**Publisher:** Lana Grossa GmbH, Gaimersheim, [www.lana-grossa.com](http://www.lana-grossa.com)

**Photographer:** Wilfried Wulff, [www.wilfriedwulff.com](http://www.wilfriedwulff.com)