

LANA GROSSA



© Lana Grossa GmbH

Design 22 – Tücher & Co. 06

SHAWL **LACE SETA MULBERRY**

SHAWL · LACE SETA MULBERRY

Design 22 – Tücher & Co. 06



Size approx. 134 x 114 x 200 cm

Materials: 250 g of Lana Grossa **Lace Seta Mulberry** (35% Mulberry silk, 35% baby Alpaca, 30% superfine Merino wool; 175 m/50 g) in Pastel Blue (**col 24**) and 50 g in Dark Petrol (**col 18**). Size 3.5 mm circular needle, 80 – 100 cm long; cable needle [cn]; stitch marker.

Garner st: K every row.

Chart patt 1: Multiple of 10. Numbers at right edge of chart indicate RS rows; on WS rows, work sts as they appear, purl all yos. Rep rows 1 – 10.

Chart patt 2: Multiple of 22 + 8. Numbers at right edge of chart indicate RS rows, numbers at left edge of chart indicate WS rows. Rep rows 1 – 4.

Selvaqe sts: On every row: Knit first and last st.

Gauge: 22 sts and 34 rows = 10 x 10 cm in chart patt 1 on size 3.5 mm needles.

Note: Shawl begins at point. Arrow on schematic shows direction of work. Stitches are increased at right edge and decreased at left edge to create the diagonal shape.

K1f&b: Knit into front and back of next st – 1 st increased.

Shawl: With size 3.5 mm circular needle and Pastel Blue cast on 5 sts. **Set-up row 1:** Sl 1 pwise wyif, k1, k1f&b, k2, sl 1 pwise wyif = 6 sts. **Set-up row 2:** Knit all sts. Begin patt: **Row 1 (RS):** K1f&b, knit to last 2 sts, k2tog = 6 sts. **Row 2 (WS):** Sl 1 pwise wyif, knit to last 2 sts, k1f&b, sl 1 pwise wyif = 7 sts and 1 st increased. **Row 3 (RS):** K1f&b, knit to last 2 sts, k2tog = 7 sts. **Row 4 (WS):** Sl 1 pwise wyif, knit to last 2 sts, k1f&b, sl 1 pwise wyif = 8 sts and 1 st increased. **Row 5 (RS):** K1f&b, knit to last 2 sts, M1R, k2tog = 9 sts and 1 st increased. **Row 6 (WS):** Sl 1 pwise wyif, knit to last 2 sts, k1f&b, sl 1 pwise wyif = 10 sts and 1 st increased. Rep rows 1 – 6 until 54 sts are on the needle. Next, work chart 1, beginning with chart row 9. **Note:** Work increased sts into patt. If there are not enough sts at end of RS rows to offset a yo with a decrease or to work a complete 4-st cable, work sts in St st on RS, work sts as they appear on

WS. **Row 9 (RS):** K1f&b, work 10-st patt rep to last 2 sts, k2tog. **Row 10 (WS):** Sl 1 pwise wyif, k1, work patt rep to last 2 sts, k1f&b, sl 1 pwise wyif.

Next, work chart rows [1 – 10] 6 times, then work rows 1 – 8 once more, working incs and decs as established. **Tip:** To make lining up chart patt 1 after following garter st section easier, place marker before first complete patt rep on last RS row. Next, work in garter st for 12 rows, working incs and decs as established. Next, work rows 9 and 10 of chart 1, then work rows [1 – 10] 5 times, then work rows 1 – 8 once more, working incs and decs as established. Next, work in garter st for 10 rows, working incs and decs as established. Next, work rows 9 and 10 of chart 1, then work rows [1 – 10] 4 times, then work rows 1 – 8 once more, working incs and decs as established. Next, work in garter st for 8 rows, working incs and decs as established. Next, work rows 9 and 10 of chart 1, then work rows [1 – 10] 3 times, then work rows 1 – 8 once more, working incs and decs as established. Next, work in garter st for 6 rows, working incs and decs as established. Next, work rows 9 and 10 of chart 1, then work rows [1 – 10] 2 times, then work rows 1 – 8 once more, working incs and decs as established. Next, work in garter st for 4 rows, working incs and decs as established. Break Pastel Blue, join Dark Petrol. Work in garter st for 2 rows, working incs and decs as established. Next, work rows 9 and 10 of chart 1, then work rows [1 – 10] 2 times, then work rows 1 – 8 once more, working incs and decs as established. Next, work in garter st for 2 rows, working incs and decs as established = 259 sts. Rejoin Pastel Blue and work chart 2. If you have more or less sts than the required 259 sts, simply work more or less sts in garter st before and after chart patt 2. **Row 1 (RS):** K9, skp, k8, M1R, k1, M1R; work row 1 of chart = work patt rep 10 times, work to end of chart; k2tog, k9. **Row 2 (WS):** K10; work row 2 of chart = work to patt rep, work patt rep 10 times; knit to end of row. **Row 3 (RS):** K9, skp, k8, M1R, sl 1 pwise wyib, M1R; work row 3 of chart = work patt rep 10 times, work to end of chart; k2tog, k9. **Row 4 (WS):** K10; work row 4 of chart = work to patt rep, work patt rep 10 times, knit to end of row. Rep last 4 rows 5 more times or until yarn is almost used up, then work chart row 1 once more. Knit 1 WS row. Using Dark Petrol knit 1 RS row. Loosely bind off all sts kwise.

Finishing: Pin piece to measurements and block.

SHAWL · LACE SETA MULBERRY

Design 22 – Tücher & Co. 06

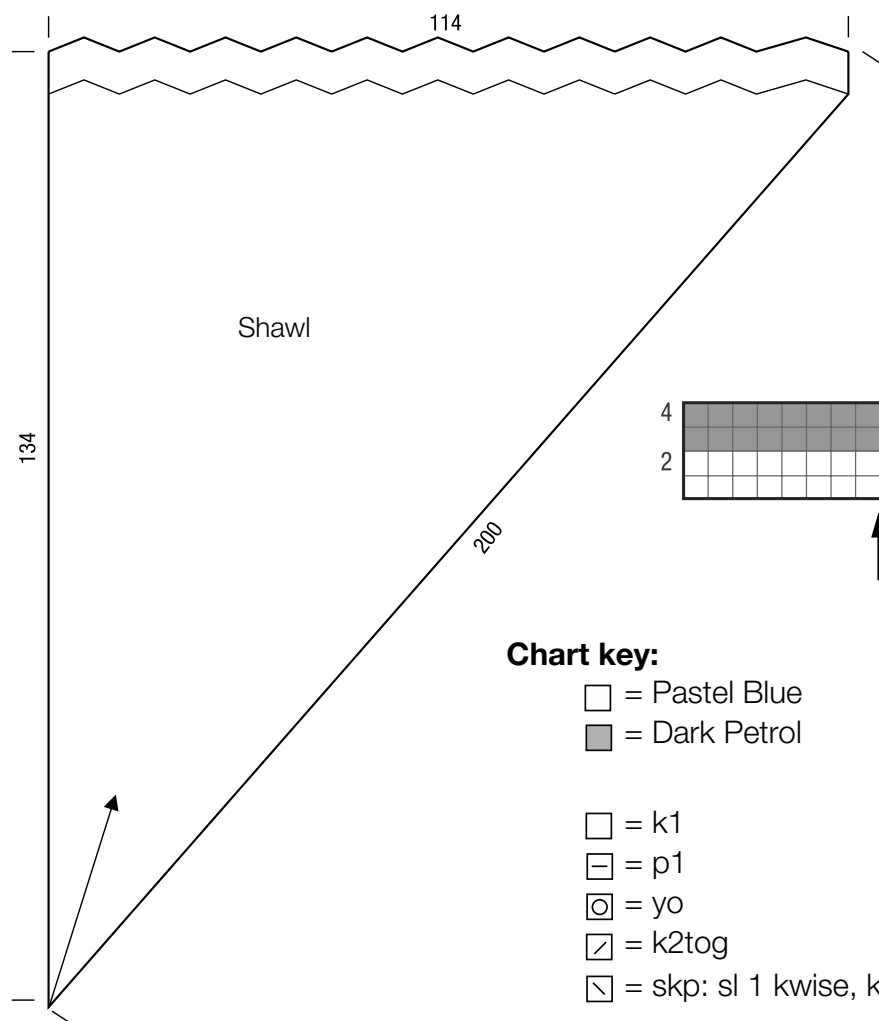


Chart 1

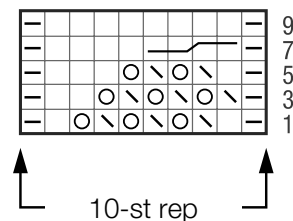


Chart 2

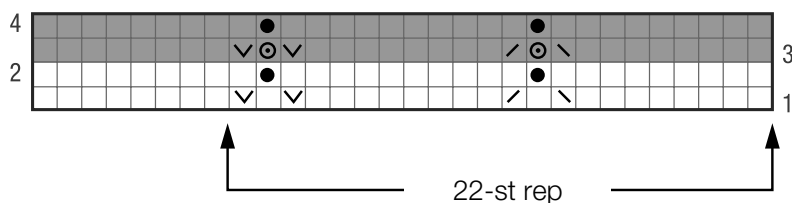


Chart key:

□ = Pastel Blue
■ = Dark Petrol

□ = k1

□ = p1

⊙ = yo

⊠ = k2tog

⊡ = skp: sl 1 kwise, k1, pass slipped st over knitted st

✓ = M1R

⊙ = sl 1 pwise wyib

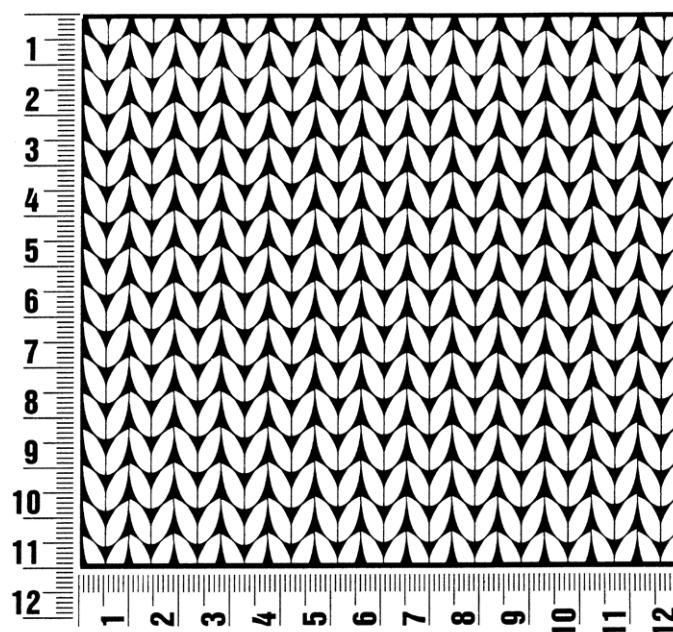
● = sl 1 pwise wyif

⊠⊠ = sl 2 sts to cn and hold in back of work, k2, then k2 from cn

Gauge Swatch

Before you begin ...

...make a gauge swatch. Use the recommended needles, yarns and pattern stitch for your gauge swatch. It should measure approx. 12 cm x 12 cm. Cast-on and bind-off rows, as well as selvage stitches should not be included in the measurement. Pin your swatch and block it as you would the finished pieces of the garment. Count stitches and rows over 10 cm. If your gauge swatch is too small, switch to larger needles. If your gauge swatch is too big, switch to smaller needles.



Abbreviations

beg = begin(ning) · **ch** = chain · **cont** = continue · **dec** = decreas(e)(ing) · **inc** = increas(e)(ing) · **k** = knit · **kwise** = as if to knit
meas = measures · **M1L** = lift strand between sts from front to back and knit this strand through the back loop · **M1R** = lift strand between sts from the back and knit this strand through the front loop · **patt** = pattern · **pm** = place marker · **p** = purl
pwise = as if to purl · **rem** = remain(ing) · **rep** = repeat(s) · **rev St st** = reverse stockinette stitch · **rnd(s)** = round(s) · **RS** = right side · **sc** = single crochet · **skp** = slip 1 stitch as if to knit, knit 1 stitch, pass slipped stitch over knitted stitch · **sk2p** = slip 1 stitch as if to knit, knit 2 together, pass slipped stitch over knitted stitch · **s2kp** = slip 2 stitches as if to knit, k 1 stitch, pass slipped stitches over knitted stitch · **sl** = slip · **st(s)** = stitch(es) · **St st** = stockinette stitch · **tbl** = through the back loop · **tog** = together · **wyib** = with yarn in back of work · **wyif** = with yarn in front of work · **WS** = wrong side · **yo(s)** = yarn over(s)

Publisher's Info

Publisher: Lana Grossa GmbH, Gaimersheim, www.lana-grossa.com

Photographer: Wilfried Wulff, www.wilfriedwulff.com