



© Lana Grossa GmbH

Design 27 – Lookbook 16

SHIRT SILKHAIR

SHIRT · SILKHAIR

Design 27 – Lookbook 16



Size 36/38 (40/42, 44/46, 48/50)

Instructions are given for first size. Figures in parenthesis refer to larger sizes. When only one figure is given, it applies to all sizes.

Materials: **75 (100, 100, 125) g** of Lana Grossa **Silkhair** (70% superkid mohair, 30% silk; 210 m/25 g) in Off White (**col 52**), **25 (25, 50, 50) g** in Rosewood (**col 74**), **25 (25, 25, 25) g** in Pale Purple (**col 87**), **50 (75, 75, 100) g** in Grey Purple (**col 152**), **25 (25, 50, 50) g** in Pink (**col 162**) and **25 (50, 50, 75) g** in Fuchsia (**col 172**). Size 3.5 and 4 mm needles; short size 3.5 mm circular needle.

Note: Work with 2 strands held tog as given in instructions.

Rib patt: Selvage st, * k1, p1; rep from * to last 2 sts, k1, selvage st.

St st: K on RS, p on WS.

Two-stitch selvage: At beg of row, sl 1 pwise, k1; at end of row, work to last 2 sts, sl 1 pwise, k1.

Slip st rib edging: On RS row, two-stitch selvage, k2, sl 1 kwise; work to last 5 sts, sl 1 kwise, k2, two-stitch selvage. On WS row, two-stitch selvage, p3; work to last 5 sts, p3, two-stitch selvage.

Stripe patt: Work 11 (12, 13, 14) cm with 1 strand Fuchsia and 1 strand Off White held tog, 5 cm with 1 strand Pale Purple and 1 strand Off White held tog, 3 cm with 2 strands Grey Purple held tog, 11 cm with 1 strand Pink and 1 strand Off White held tog, 4 cm with 1 strand Fuchsia and 1 strand Rosewood held tog, 14 (15, 16, 17) cm with 1 strand Grey Purple and 1 strand Off White held tog, remainder with 1 strand Rosewood and 1 strand Off White held tog.

Full-fashion increase: On RS row: M1R, 7 sts in from each edge.

Gauge: 20 sts and 24 rows = 10 x 10 cm in St st with size 4 mm needles and 2 strands held tog.

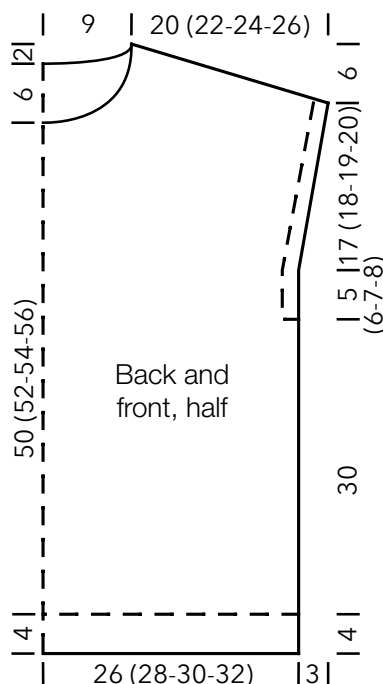
Back: With size 3.5 mm needles and 1 strand Fuchsia and 1 strand Off White held tog cast on 105 (113, 121, 129) sts. Work in rib patt for 4 cm, ending with a WS row. Change to size 4 mm needles. Work in St st and stripe patt until piece meas 34 cm from cast-on, ending with a WS row. Shape armholes: Working slip st rib edging over first and last 5 sts, cont in St st and stripe patt for 5 (6, 7, 8) cm, ending with a WS row. Maintaining slip st rib edging and working full-fashion inc, inc 1 st at each end of next RS row, then every 6th row 6 times = 119 (127, 135, 143) sts. Work even until armhole meas 22 (24, 26, 28) cm, ending with a WS row. Shape shoulders and neck: At each shoulder edge bind off 5 sts 1 time, 6 sts 6 times (6 sts 4 times, 7 sts 3 times / 7 sts 7 times / 7 sts 3 times / 8 sts 4 times). At same time, when piece meas 4 cm from beg of

shoulder shaping, shape neck as foll: Next row (RS): Bind off center 31 sts. Working each side separately, bind off 2 sts at each neck edge 1 time, 1 st 1 time. No sts rem.

Front: Work same as back until armhole meas 20 (22, 24, 26) cm, ending with a WS row. Shape neck: Next row (RS): Bind off center 7 sts. Working each side separately, bind off 4 sts at each neck edge 1 time, 3 sts 1 time, 2 sts 2 times, 1 st 4 times and when same length as back to shoulders, shape shoulders same as for back. No sts rem.

Pocket: With size 4 mm needles and 1 strand Rosewood and 1 strand Off White held tog, cast on 21 (23, 25, 27) sts. Work in St st and shape piece as foll: Inc 1 st at each end of next 2 RS rows = 25 (27, 29, 31) sts. Work even until piece meas 3.5 (4, 4.5, 5) cm from cast-on, ending with a WS row. Break Rosewood, join Pale Purple and cont in St st for 5 (5.5, 6, 6.5) cm, ending with a WS row. Break Pale Purple and Off White. Change to size 3.5 mm needles and join 2 strands Grey Purple. Work in rib patt for 2.5 cm. Bind off all sts in rib.

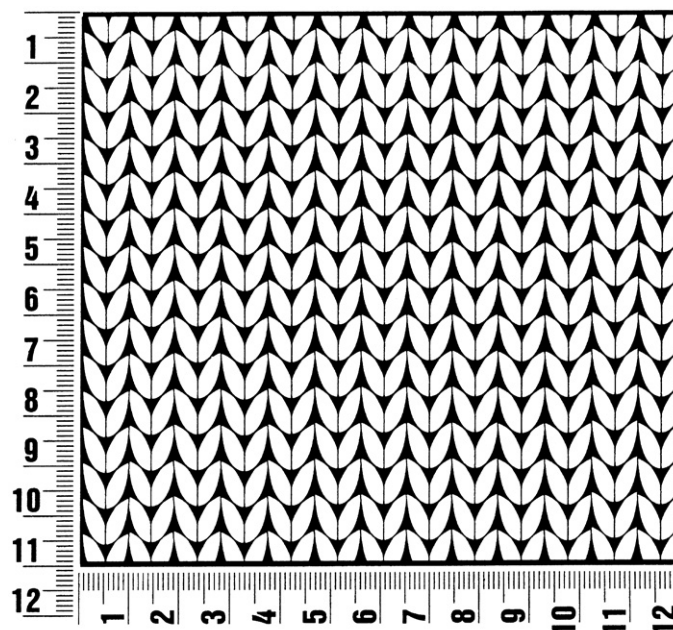
Finishing: Sew pocket to front, approx. 9 (11, 13, 15) cm in from left side edge and 24 (25, 26, 27) cm up from cast-on edge. Sew shoulder and side seams. **Neckband:** With size 3.5 mm circular needle and 1 strand Rosewood and 1 strand Off White held tog, pick up and k 86 sts evenly around neck edge. Place beg of rnd marker and join for working in rnds. Work in rib patt (k1, p1 around) for 2.5 cm. Bind off all sts.



Gauge Swatch

Before you begin ...

...make a gauge swatch. Use the recommended needles, yarns and pattern stitch for your gauge swatch. It should measure approx. 12 cm x 12 cm. Cast-on and bind-off rows, as well as selvedge stitches should not be included in the measurement. Pin your swatch and block it as you would the finished pieces of the garment. Count stitches and rows over 10 cm. If your gauge swatch is too small, switch to larger needles. If your gauge swatch is too big, switch to smaller needles.



Abbreviations

beg = begin(ning) · **ch** = chain · **cont** = continue · **dec** = decreas(e)(ing) · **inc** = increas(e)(ing) · **k** = knit · **kwise** = as if to knit
meas = measures · **M1L** = lift strand between sts from front to back and knit this strand through the back loop · **M1R** = lift strand between sts from the back and knit this strand through the front loop · **patt** = pattern · **pm** = place marker · **p** = purl
pwise = as if to purl · **rem** = remain(ing) · **rep** = repeat(s) · **rev St st** = reverse stockinette stitch · **rnd(s)** = round(s) · **RS** = right side · **sc** = single crochet · **skp** = slip 1 stitch as if to knit, knit 1 stitch, pass slipped stitch over knitted stitch · **sk2p** = slip 1 stitch as if to knit, knit 2 together, pass slipped stitch over knitted stitch · **s2kp** = slip 2 stitches as if to knit, k 1 stitch, pass slipped stitches over knitted stitch · **sl** = slip · **st(s)** = stitch(es) · **St st** = stockinette stitch · **tbl** = through the back loop · **tog** = together · **wyib** = with yarn in back of work · **wyif** = with yarn in front of work · **WS** = wrong side · **yo(s)** = yarn over(s)

Publisher's Info

Publisher: Lana Grossa GmbH, Gaimersheim, www.lana-grossa.com

Photographer: Wilfried Wulff, www.wilfriedwulff.com