



© Lana Grossa GmbH

Design 29 – Filati Journal 67

CARDIGAN

DIVERSA, RICCIO, SOTTILE & PROMESSA

CARDIGAN · DIVERSA, RICCIO, SOTTILE & PROMESSA

Design 29 – Filati Journal 67



Size 36 – 40 (42 – 46)

Instructions are given for smaller size. Figure in parenthesis refers to larger size. When only one figure is given, it applies to both sizes.

Materials: **50 g** of Lana Grossa **Diversa** (74% cotton, 26% viscose; 210 m/50 g) in Blue Grey (**col 8**) and **250 g** in Natural (**col 7**); **100 g** of Lana Grossa **Riccio** (84% cotton, 16% polyamide; 110 m/50 g) in Red (**col 11**); **100 g** of Lana Grossa **Sottile** (85% cotton, 15% Merino wool; 250 m/50 g) in Light Blue (**col 8**); **100 g** of Lana Grossa **Promessa** (70% organic cotton, 30% recycled polyamide; 125 m/50 g) in Pink (**col 5**). Size 4.5 and 5 mm needles; size 4.5 mm circular needle, 80 cm long; three 25 mm buttons.

Gauge: 18 sts and 20 rows (= 1 patt rep) = 10 x 6 cm in main patt on size 5 mm needles.

Selvage stitches: On every row: Sl first st kwise, k last st.

Slip stitch selvage: On every row: Sl first st pwise wyif, k first st.

Rib patt: K2, p2.

Gartr st: K every row.

St st: K on RS, p on WS.

Honeycomb brioche: Row 1 (WS): Selvage st, * yos1 (make a yo, then sl next st pwise), k1; rep from *, end selvage st. Row 2 (RS): Selvage st, * k1, knit the slipped st, sl the yo pwise wyib; rep from *, end selvage st. Row 3 (WS): Selvage st, * ktog slipped yo and next st, yos1; rep from *, end selvage st. Row 4 (RS): Selvage st, * knit the slipped st, sl the yo pwise wyib, k1; rep from *, end selvage st. Row 5 (WS): Selvage st, * yos1, ktog slipped yo and next st; rep from *, end selvage st. Work rows 1 – 5 once, then rep rows 2 – 5.

Main patt:

* 2 rows in gartr st with Riccio (red);
2 rows in St st with Promessa (pink);
K 1 RS row with 2 strands Sottile (light blue) held tog;
5 rows honeycomb brioche with 2 strands Sottile (light blue) held tog;
2 rows in St st with Promessa (pink);
2 rows in gartr st with Riccio (red);
K 1 row with 2 strands Diversa (natural) held tog;
P 5 rows with 2 strands Diversa (natural) held tog;
Rep from * throughout.

Back: With size 4.5 mm needles and 2 strands Diversa in Blue Grey held tog cast on 94 (110) sts. Next row (WS): Selvage st, p1, * k2, p2; rep from * to last 4 sts, k2, p1, selvage st. Next 2 rows: Work in rib patt as set by last row. Change to

2 strands Diversa in Natural held tog. Cont in rib patt as established for 8 rows, ending with a WS row. Change to size 5 mm needles. Maintaining selvage sts, work in main patt for 29 cm, ending with a WS row. Shape armholes: Inc 1 st at each end of next RS row, then every 4 cm 3 times = 102 (118) sts. Work even until piece meas 46 (50) cm from cast-on, ending with a WS row. Shape shoulders and neck: At each shoulder edge bind off 3 (4) sts 1 time; [work 2 rows even, bind off 3 (4) sts] 2 times; bind off 3 sts 3 times; work 2 rows even, bind off 4 (5) sts 1 time; bind off 3 (4) sts 2 times, 4 sts 1 time. At same time, when piece meas 5 cm from beg of shoulder shaping, shape neck as foll: Next row (RS): Bind off center 28 (32) sts. Working each side separately, bind off 2 sts at each neck edge 1 time, 1 st 3 times. No sts rem.

Left front: With size 4.5 mm needles and 2 strands Diversa in Blue Grey cast on 44 (52) sts. Next row (WS): Slip st selvage, k1, * p2, k2; rep from * to last 4 sts, p2, k1, selvage st. Next 2 rows: Work in rib patt as set by last row. Change to 2 strands Diversa in Natural held tog. Cont in rib patt as established for 8 rows, ending with a WS row. Change to size 5 mm needles. Maintaining selvage sts, work in main patt for 17 (19) cm, ending with a WS row. Shape neck: Dec 1 st at end of next RS row, then every 8th row 7 times, then every 6th row 8 (10) times. At same time, when same length as back to armhole, shape armhole at right edge same as for back and when same length as back to shoulder, shape shoulder at right edge same as for back. No sts rem.

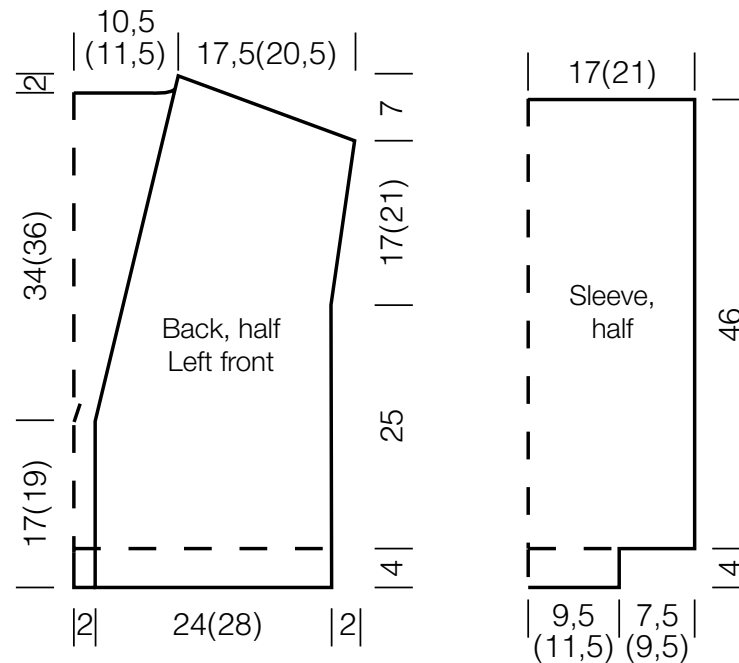
Right front: Work same as left front, reversing all shaping.

Sleeves: With size 4.5 mm needles and 2 strands Diversa in Blue Grey cast on 34 (42) sts. Next row (WS): Selvage st, k1, * p2, k2; rep from * to last 4 sts, p2, k1, selvage st. Next 2 rows: Work in rib patt as set by last row. Change to 2 strands Diversa in Natural held tog. Cont in rib patt as established for 8 rows, ending with a WS row. Change to size 5 mm needles. Maintaining selvage sts, work in main patt for 50 cm, increasing 30 (38) sts evenly across first row = 64 (80) sts. Bind off all sts.

Finishing: Pin pieces to measurements and block. Sew shoulder seams. Front and neckband: With size 4.5 mm circular needle and 2 strands Diversa in Natural held tog, pick up and k 228 (246) sts evenly along right front, back and left front edge. Next row (WS): Selvage st, * k2, p2; rep from * to last 3 sts, k2, selvage st. Next 2 rows: Work in rib patt as set by last row. Next RS (buttonhole) row: Work 3 buttonholes at right front every 5.5 (6.5) cm, working first buttonhole approx. 4 cm up from bottom edge as foll: For each buttonhole, k2tog or p2tog as needed for patt, yo. Cont in rib patt for 8 rows. Change to 2 strands Diversa in Blue Grey held tog. Cont in rib patt for 2 rows. Bind off all sts in rib. Sew on sleeves. Sew side and sleeve seams. Sew on buttons.

CARDIGAN · DIVERSA, RICCIO, SOTTILE & PROMESSA

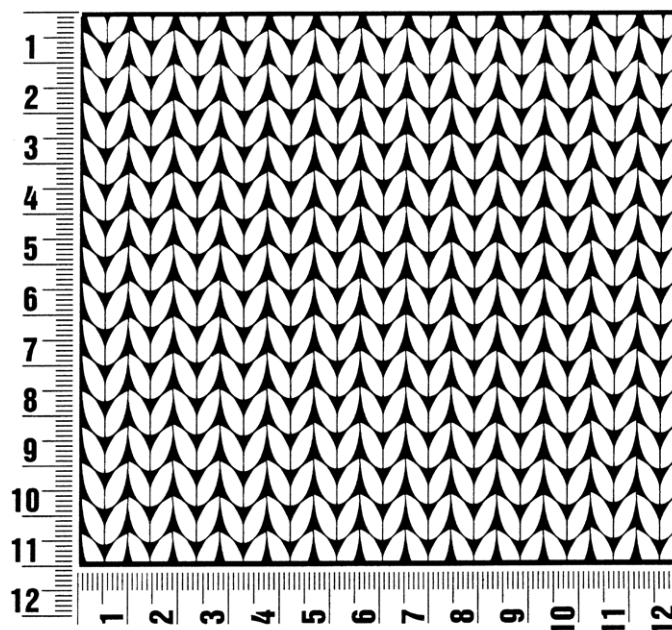
Design 29 – Filati Journal 67



Gauge Swatch

Before you begin ...

...make a gauge swatch. Use the recommended needles, yarns and pattern stitch for your gauge swatch. It should measure approx. 12 cm x 12 cm. Cast-on and bind-off rows, as well as selvedge stitches should not be included in the measurement. Pin your swatch and block it as you would the finished pieces of the garment. Count stitches and rows over 10 cm. If your gauge swatch is too small, switch to larger needles. If your gauge swatch is too big, switch to smaller needles.



Abbreviations

beg = begin(ning) · **ch** = chain · **cont** = continue · **dec** = decreas(e)(ing) · **inc** = increas(e)(ing) · **k** = knit · **kwise** = as if to knit
meas = measures · **M1L** = lift strand between sts from front to back and knit this strand through the back loop · **M1R** = lift strand between sts from the back and knit this strand through the front loop · **patt** = pattern · **pm** = place marker · **p** = purl
pwise = as if to purl · **rem** = remain(ing) · **rep** = repeat(s) · **rev St st** = reverse stockinette stitch · **rnd(s)** = round(s) · **RS** = right side · **sc** = single crochet · **skp** = slip 1 stitch as if to knit, knit 1 stitch, pass slipped stitch over knitted stitch · **sk2p** = slip 1 stitch as if to knit, knit 2 together, pass slipped stitch over knitted stitch · **s2kp** = slip 2 stitches as if to knit, k 1 stitch, pass slipped stitches over knitted stitch · **sl** = slip · **st(s)** = stitch(es) · **St st** = stockinette stitch · **tbl** = through the back loop · **tog** = together · **wyib** = with yarn in back of work · **wyif** = with yarn in front of work · **WS** = wrong side · **yo(s)** = yarn over(s)

Publisher's Info

Publisher: Lana Grossa GmbH, Gaimersheim, www.lana-grossa.com

Photographer: Lana Grossa