



© Lana Grossa GmbH

Design 41 – Filati Journal 67

**TOP
SOTTILE**

TOP · SOTTILE

Design 41 – Filati Journal 67



Size One size

Materials: 150 g of Lana Grossa **Sottile** (85% cotton, 15% Merino wool; 250 m/50 g) in Coral (**col 3**). Size 3 and 4 mm needles; size 3 mm circular needle, 50 cm long.

Selvage sts: On every row: Knit first and last st.

Two-stitch selvage: On RS row, sl 1 pwise wyib, k1, patt to last 2 sts, k1, sl 1 pwise wyib. On WS row, p1, sl 1 pwise wyif, patt to last 2 sts, sl 1 pwise wyif, p1.

Rib patt: K1, p1.

Chart patt: Multiple of 26 + 3. Numbers at right edge of chart indicate RS rows; on WS rows, work sts as they appear, purl all yos. Work to patt rep, work 26 sts between arrows for patt rep, work to end of chart. Rep rows 1 – 40.

Full-fashion decrease: At beg of RS row, two-stitch selvage, p1, k2tog; at end of RS row, work to last 5 sts, skp, p1, two-stitch selvage.

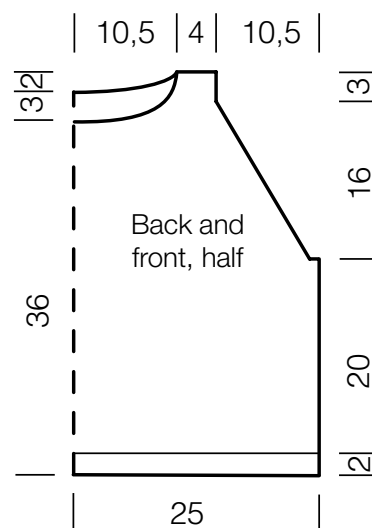
Gauge: 27 sts and 33 rows = 10 x 10 cm in chart patt on size 4 mm needles.

Back: With size 3 mm needles cast on 135 sts. Next row (WS): Selvage st, * p1, k1; rep from * to last 2 sts, p1, selvage st. Work in rib patt as set by last row until piece meas 2 cm from cast-on, ending with a WS row. Change to size 4 mm needles. Next row (RS): Selvage st; work row 1 of chart = work 14 sts to patt rep, work 26-st patt rep 4 times, work 15 sts after patt rep; selvage st. Note: Selvage sts are not included on chart. Maintaining selvage sts, work chart for a total of 66 rows and piece meas 20 cm from end of rib patt. Shape armholes: Bind off 4 sts at beg of next 2 rows. Working full-fashion dec, dec 1 st at each end of next 25 RS rows = 77 sts. Note: When working shaping, make sure each yo is

paired with a decrease and vice versa. Work even until a total of 56 rows has been worked from beg of armhole shaping and armhole meas 17 cm. Shape neck: Next row (RS): Bind off center 49 sts. Working each side separately, bind off 1 st at each neck edge 4 times. Bind off rem 10 sts for each shoulder.

Front: Work same as back until a total of 46 rows has been worked from beg of armhole shaping and armhole meas 14 cm. Shape neck: Next row (RS): Bind off center 45 sts. Working each side separately, bind off 3 sts at each neck edge 1 time, 2 sts 1 time, 1 st 1 time and when same length as back to shoulders, bind off rem 10 sts for each shoulder.

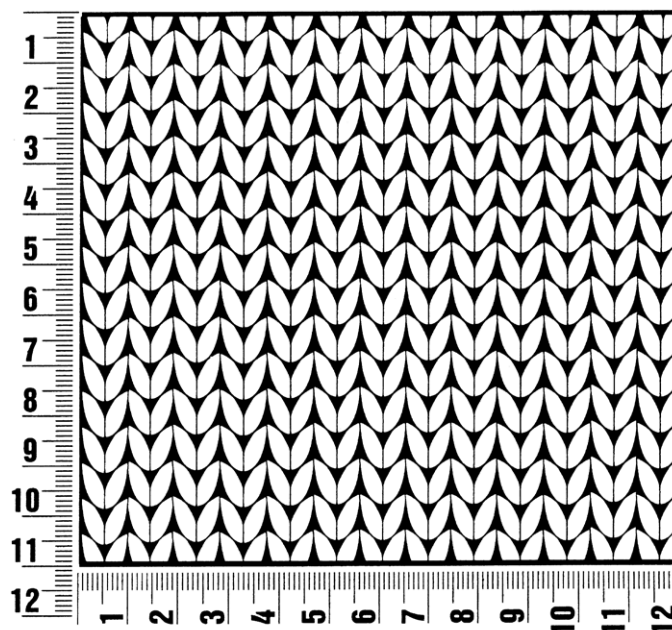
Finishing: Pin pieces to measurements and block. Sew shoulder and side seams. **Neckband:** With size 3 mm circular needle, pick up and k 120 sts evenly around neck edge. Place beg of rnd marker and join for working in rnds. Work in rib patt for 2 cm. Bind off all sts in rib. Carefully weave in all ends.



Gauge Swatch

Before you begin ...

...make a gauge swatch. Use the recommended needles, yarns and pattern stitch for your gauge swatch. It should measure approx. 12 cm x 12 cm. Cast-on and bind-off rows, as well as selvage stitches should not be included in the measurement. Pin your swatch and block it as you would the finished pieces of the garment. Count stitches and rows over 10 cm. If your gauge swatch is too small, switch to larger needles. If your gauge swatch is too big, switch to smaller needles.



Abbreviations

beg = begin(ning) · **ch** = chain · **cont** = continue · **dec** = decreas(e)(ing) · **inc** = increas(e)(ing) · **k** = knit · **kwise** = as if to knit
meas = measures · **M1L** = lift strand between sts from front to back and knit this strand through the back loop · **M1R** = lift strand between sts from the back and knit this strand through the front loop · **patt** = pattern · **pm** = place marker · **p** = purl
pwise = as if to purl · **rem** = remain(ing) · **rep** = repeat(s) · **rev St st** = reverse stockinette stitch · **rnd(s)** = round(s) · **RS** = right side · **sc** = single crochet · **skp** = slip 1 stitch as if to knit, knit 1 stitch, pass slipped stitch over knitted stitch · **sk2p** = slip 1 stitch as if to knit, knit 2 together, pass slipped stitch over knitted stitch · **s2kp** = slip 2 stitches as if to knit, k 1 stitch, pass slipped stitches over knitted stitch · **sl** = slip · **st(s)** = stitch(es) · **St st** = stockinette stitch · **tbl** = through the back loop · **tog** = together · **wyib** = with yarn in back of work · **wyif** = with yarn in front of work · **WS** = wrong side · **yo(s)** = yarn over(s)

Publisher's Info

Publisher: Lana Grossa GmbH, Gaimersheim, www.lana-grossa.com

Photographer: Nicolas Olonetzky, www.nicolasolonetzky.com