



© Lana Grossa GmbH

Design 54 – Classici 27

JACKET

COOL MERINO BIG

JACKET · COOL MERINO BIG

Design 54 – Classici 27



Size 48 (50/52, 54)

Instructions are given for first size. Figures in parenthesis refer to larger sizes. When only one figure is given, it applies to all sizes.

Materials: 750 (800, 850) g of Lana Grossa **Cool Merino Big** (90% Merino wool, 10% polyamide; 90 m/50 g) in Dark Red (**col 212**). Size 4 and 6 mm needles.

Rib patt: K1, p1.

St st: K on RS, p on WS.

Selvage sts: On every row: Knit first and last st.

Slip stitch selvage: On every row: Ktbl first st, sl last st pwise wyif.

Full-fashion increase 1: On RS row: M1R, 2 sts in from each edge.

Full-fashion increase 2: On RS row: M1R, 3 sts in from each edge.

Gauge: 15.5 sts and 22 rows = 10 x 10 cm in St st on size 6 mm needles.

Back: With size 4 mm needles cast on 117 (123, 129) sts. Next row (WS): Selvage st, * k1, p1; rep from * to last 2 sts, k1, selvage st. Work in rib patt as set by last row until piece meas 5 cm from cast-on, decreasing 19 sts evenly across last WS row = 98 (104, 110) sts. Change to size 6 mm needles. Maintaining selvage sts work in St st until piece meas 46 cm from cast-on. Place marker in first and last st on last WS row to indicate beg of armholes. Cont until piece meas 22 (23, 24) cm from armhole markers, ending with a WS row. Shape shoulders and neck: At each shoulder edge bind off 5 sts 5 times, 6 sts 1 time (5 sts 2 times, 6 sts 4 times / 6 sts 5 times, 7 sts 1 time). **At same time**, when piece meas 2.5 cm from beg of shoulder shaping, shape neck as foll: Next row (RS): Bind off center 30 sts. Working each side separately, bind off 3 sts at each neck edge 1 time. No sts rem.

Left front: With size 4 mm needles cast on 62 (66, 68) sts. Next row (WS): Slip st selvage, * p1, k1; rep from *, end selvage st. Work in rib patt as set by last row until piece meas 5 cm from cast-on, decreasing 10 (11, 10) sts evenly across last 50 (54, 56) sts of rib patt = 52 (55, 58) sts. Change to size

6 mm needles. Next row (RS): Selvage st, work next 42 (45, 48) sts in St st, work next 8 sts in rib patt as established, slip st selvage st. Work in patt as set by last row until piece meas 30 (31, 32) cm from cast-on, ending with a WS row. Next row (RS): Selvage st, work next 40 (43, 46) sts in St st, work next 10 sts in rib patt, slip st selvage st. Next 7 rows: Work sts as they appear. Next row (RS): Selvage st, work next 38 (41, 44) sts in St st, work next 12 sts in rib patt, slip st selvage st. Cont in this manner, working 2 additional sts in rib patt every 8th row 4 more times = 20 sts in rib patt. **At same time**, when same length as back to armhole, place armhole marker at right edge and when same length as back to shoulder, shape shoulder at right edge same as for back = 21 sts rem for collar. Working a selvage st at right edge of collar, cont in patt for 12 cm. Bind off all sts in patt.

Right front: Work same as left front, reversing all shaping and patt placement.

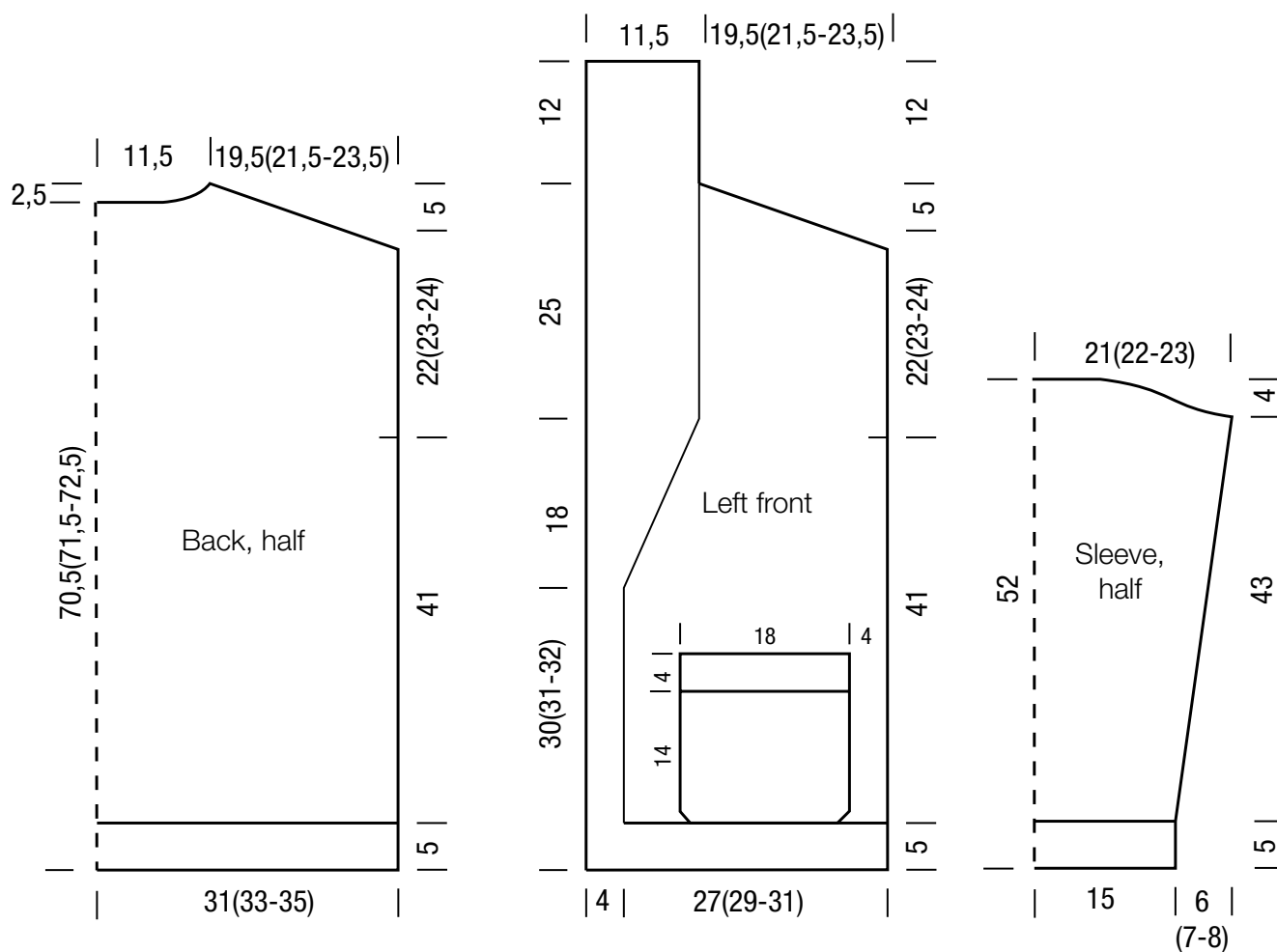
Pockets: Make 2. With size 6 mm needles cast on 26 sts. Working first and last st as selvage sts, work in St st and shape pocket as foll: Working full-fashion inc 1, inc 1 st at each end of next 2 RS rows = 30 sts. Work even until piece meas 14 cm from cast-on, increasing 5 sts evenly across last WS row = 35 sts. Change to size 4 mm needles. Next row (RS): Selvage st, * k1, p1; rep from * to last 2 sts, k1, selvage st. Work in rib patt as set by last row for 4 cm. Bind off all sts in rib.

Sleeves: With size 4 mm needles cast on 62 sts. Next row (WS): Selvage st, * k1, p1; rep from *, end selvage st. Work in rib patt as set by last row until piece meas 5 cm from cast-on, decreasing 12 sts evenly across last WS row = 50 sts. Change to size 6 mm needles. Maintaining selvage sts work in St st and shape sleeve as foll: Working full-fashion inc 2, inc 1 st at each end of 13 (11, 9)th row, then every alt 10th and 12th row 7 times (then every alt 8th and 10th row 7 times, then every 8th row 2 times / then every 8th row 2 times, then every alt 6th and 8th row 9 times) = 66 (70, 74) sts. Work even until piece meas 48 cm from cast-on, ending with a WS row. Shape sleeve cap: Bind off 5 (6, 7) sts at beg of next 4 rows, 3 sts at beg of next 6 rows. Bind off rem 28 sts.

Finishing: Pin pieces to measurements and block. Referring to schematic for placement, sew pockets to fronts. Sew shoulder seams. Sew bound-off edges of collar tog, then sew collar to back neck. Sew on sleeves between markers. Sew side and sleeve seams.

JACKET · COOL MERINO BIG

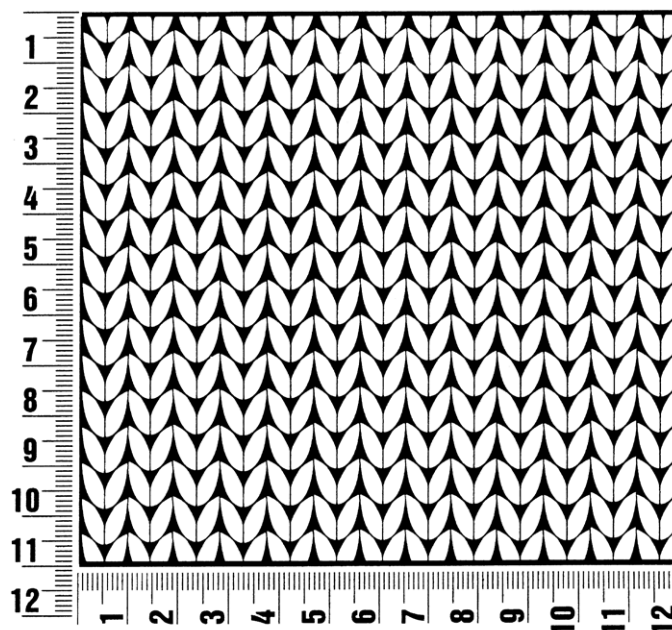
Design 54 – Classici 27



Gauge Swatch

Before you begin ...

...make a gauge swatch. Use the recommended needles, yarns and pattern stitch for your gauge swatch. It should measure approx. 12 cm x 12 cm. Cast-on and bind-off rows, as well as selvage stitches should not be included in the measurement. Pin your swatch and block it as you would the finished pieces of the garment. Count stitches and rows over 10 cm. If your gauge swatch is too small, switch to larger needles. If your gauge swatch is too big, switch to smaller needles.



Abbreviations

beg = begin(ning) · **ch** = chain · **cont** = continue · **dec** = decreas(e)(ing) · **inc** = increas(e)(ing) · **k** = knit · **kwise** = as if to knit
meas = measures · **M1L** = lift strand between sts from front to back and knit this strand through the back loop · **M1R** = lift strand between sts from the back and knit this strand through the front loop · **patt** = pattern · **pm** = place marker · **p** = purl
pwise = as if to purl · **rem** = remain(ing) · **rep** = repeat(s) · **rev St st** = reverse stockinette stitch · **rnd(s)** = round(s) · **RS** = right side · **sc** = single crochet · **skp** = slip 1 stitch as if to knit, knit 1 stitch, pass slipped stitch over knitted stitch · **sk2p** = slip 1 stitch as if to knit, knit 2 together, pass slipped stitch over knitted stitch · **s2kp** = slip 2 stitches as if to knit, k 1 stitch, pass slipped stitches over knitted stitch · **sl** = slip · **st(s)** = stitch(es) · **St st** = stockinette stitch · **tbl** = through the back loop · **tog** = together · **wyib** = with yarn in back of work · **wyif** = with yarn in front of work · **WS** = wrong side · **yo(s)** = yarn over(s)

Publisher's Info

Publisher: Lana Grossa GmbH, Gaimersheim, www.lana-grossa.com
Photographer: Nicolas Olonetzky, www.nicolasolonetzky.com