



© Lana Grossa GmbH

Design 14 – Häkeln 07

---

# **CROCHET JACKET SUPERKID SETA**

# CROCHET JACKET · SUPERKID SETA

## Design 14 – Häkeln 07



**Size** One size

**Materials:** 175 g of Lana Grossa **Superkid Seta** (65% superkid mohair, 35% silk; 100 m/25 g) in Light Blue (**col 3**); 100 g in Bright Orange (**col 13**); 75 g each in Bordeaux (**col 8**) and Petrol (**col 23**); 50 g each in Red (**col 10**) and Black (**col 24**); 25 g in Opal (**col 22**). Size 5.5 mm crochet hook; size 5 mm circular needle, 80 cm long; one set size 5 mm double-pointed needles [dpns]; five 25 mm buttons in blue [by Union Knopf, item 454233].

**Granny square:** Work according to chart. Numbers on chart indicate rnds. Work rnds 1 – 6 once for each square. Ch 4, sl st in first ch to form ring. Beg each rnd with ch 3 (counts as dc) and/or ch 2 (counts as sc) as shown on chart. Join rnds with a sl st in top of beg-ch.

**Square 1:** Make 10. Work 1 rnd each in Bordeaux, Petrol, Light Blue, Red, Bright Orange, Light Blue.

**Square 2:** Make 11. Work 1 rnd each in Opal, Red, Black, Bright Orange, Petrol, Light Blue.

**Square 3:** Make 10. Work 1 rnd each in Black, Bright Orange, Petrol, Red, Bordeaux, Light Blue.

**Square 4:** Make 8. Work 1 rnd each in Red, Petrol, Bright Orange, Bordeaux, 2 rnds in Light Blue.

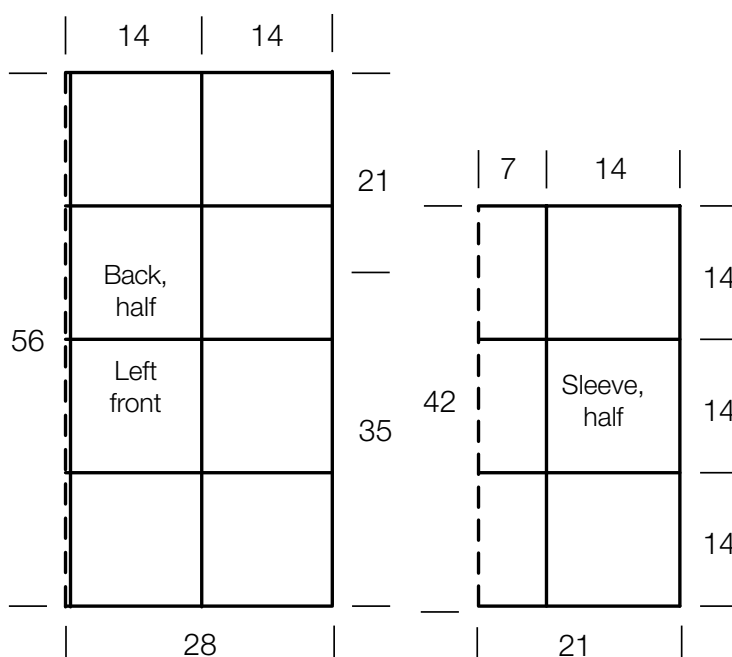
**Square 5:** Make 11. Work 1 rnd each in Light Blue, Black, Bright Orange, Opal, Bordeaux, Light Blue.

**Rib patt:** K2, p2.

**Gauge:** 1 square = 14 x 14 cm.

**Directions:** Crochet a total of 50 squares. Carefully weave in all ends. Pin squares to measurements and block. Arrange squares as shown on schematics. Join squares with rows of slip st from RS. To form a slit at center of back neck edge, join squares at center of back only to - on schematic which leaves the top half of squares 4 and 5 open for the slit.

**Finishing:** With RS facing and using slip st throughout, join shoulders, then join sleeves to back and fronts (- on square 3 and 4 on schematic for back indicate armholes), then join side and sleeve seams. **Bottom band:** With size 5 mm circular needle and RS facing, pick up and k 216 sts along bottom edge of left front, back and right front, picking up 27 sts across each square. Next row (WS): P3, \* k2, p2; rep from \* to last 5 sts, k2, p3. Work in rib patt as set by last row for a total of 13 rows and band meas 5 cm. Bind off all sts in rib. **Front and neckband:** With size 5 mm circular needle and RS facing, pick up and k 260 sts evenly along right front, back slit and left front edge. Next row (WS): P3, \* k2, p2; rep from \* to last 5 sts, k2, p3. Work in rib patt as set by last row for a total of 3 rows. Next RS (buttonhole) row: Work 5 sts in rib patt as established, [bind off 2 sts, work 14 sts in rib patt as established] 4 times, bind off 2 sts, work in rib patt as established to end. On foll WS row, cast on 2 sts over each set of bound-off sts. Cont in rib patt for 2 more rows and band meas 3 cm. Bind off all sts in rib. **Cuffs:** With size 5 mm dpns and RS facing, pick up and k 81 sts evenly around sleeve edge. Arrange sts evenly on 4 needles = 20-20-20-21 sts per needle, place beg of rnd marker and join for working in rnds. Next rnd: Knit, decreasing 33 sts evenly around = 48 sts. Work in rib patt for 5 cm, then bind off all sts in rib. Sew on buttons.

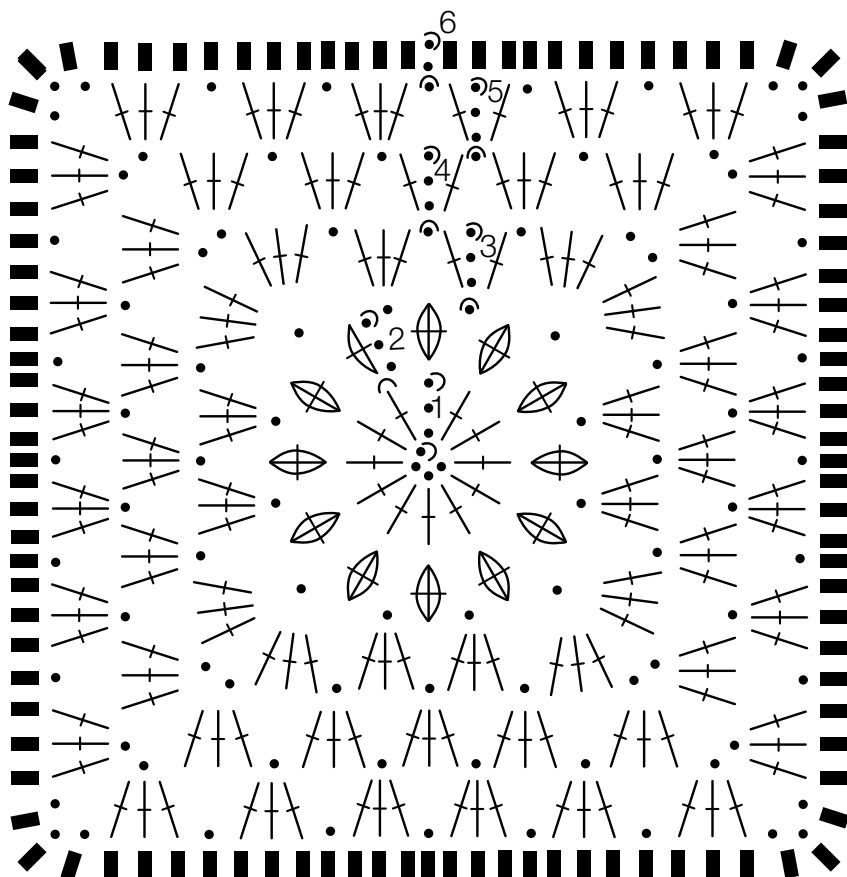


# CROCHET JACKET · SUPERKID SETA

Design 14 – Häkeln 07



Chart



**Chart key:**

- = chain (ch)
- ∩ = slip stitch (sl st)
- = single crochet (sc)
- ⊥ = double crochet (dc)
- ⊕ = dc3tog in same st and/or sp

**Back**

2	5	4	1
4	3	2	3
2	1	5	2
4	3	2	1

**Right front**

5	2
4	5
3	1
5	4

**Left front**

1	3
2	5
3	4
1	5

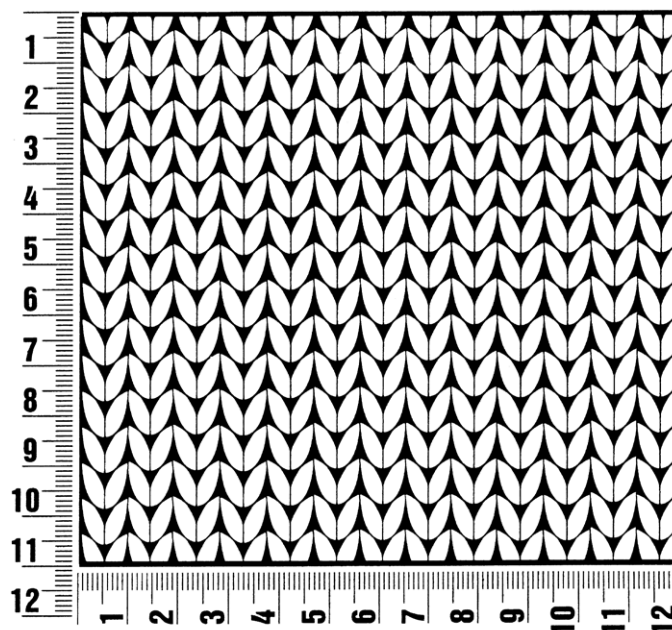
**Sleeve**

5	2	1
3	4	2
1	5	3

## Gauge Swatch

### Before you begin ...

...make a gauge swatch. Use the recommended needles, yarns and pattern stitch for your gauge swatch. It should measure approx. 12 cm x 12 cm. Cast-on and bind-off rows, as well as selvage stitches should not be included in the measurement. Pin your swatch and block it as you would the finished pieces of the garment. Count stitches and rows over 10 cm. If your gauge swatch is too small, switch to larger needles. If your gauge swatch is too big, switch to smaller needles.



## Abbreviations

**beg** = begin(ning) · **ch** = chain · **cont** = continue · **dec** = decreas(e)(ing) · **inc** = increas(e)(ing) · **k** = knit · **kwise** = as if to knit  
**meas** = measures · **M1L** = lift strand between sts from front to back and knit this strand through the back loop · **M1R** = lift strand between sts from the back and knit this strand through the front loop · **patt** = pattern · **pm** = place marker · **p** = purl  
**pwise** = as if to purl · **rem** = remain(ing) · **rep** = repeat(s) · **rev St st** = reverse stockinette stitch · **rnd(s)** = round(s) · **RS** = right side · **sc** = single crochet · **skp** = slip 1 stitch as if to knit, knit 1 stitch, pass slipped stitch over knitted stitch · **sk2p** = slip 1 stitch as if to knit, knit 2 together, pass slipped stitch over knitted stitch · **s2kp** = slip 2 stitches as if to knit, k 1 stitch, pass slipped stitches over knitted stitch · **sl** = slip · **st(s)** = stitch(es) · **St st** = stockinette stitch · **tbl** = through the back loop · **tog** = together · **wyib** = with yarn in back of work · **wyif** = with yarn in front of work · **WS** = wrong side · **yo(s)** = yarn over(s)

### Publisher's Info

**Publisher:** Lana Grossa GmbH, Gaimersheim, www.lana-grossa.com

**Photographer:** Lana Grossa