



© Lana Grossa GmbH

Design 15 – Lookbook 18

PULLOVER ECOPUNO

PULLOVER · ECOPUNO

Design 15 – Lookbook 18



Size 36/38 (42/44, 46/48)

Instructions are given for first size. Figures in parenthesis refer to larger sizes. When only one figure is given, it applies to all sizes.

Materials: **50 (50, 100, 100) g each** of Lana Grossa **Ecopuno** (72% cotton, 17% Merino wool, 11% baby alpaca; 215 m/50 g) in Azure (**col 85**) and Lobster (**col 90**); **100 (100, 150, 150) g** in Light Blue (**col 13**); **50 (100, 100, 100) g each** in Pastel Blue (**col 207**) and Bright Orange (**col 89**); **50 (100, 100, 150) g** in Pearl Beige (**col 66**). Short and long size 3.5 and 4.5 mm circular needle; one set each size 3.5 and 4.5 mm double-pointed needles [dpns]; stitch markers.

Rib patt: K1, p1.

St st: K on RS, p on WS; k every rnd.

Stripe patt:

30 rows/rnds (measured on back) in Azure (col 85), 24 (26, 28, 30) rnds each in Lobster (col 90), Light Blue (col 13) and Pastel Blue (col 207).

End body with 26 (28, 30, 32) rnds in Bright Orange (col 89), 12 (12, 14, 14) rnds in Pearl Beige (col 66).

End sleeves with 24 (26, 28, 30) rnds each in Bright Orange (col 89) and Pearl Beige (col 66),

22 (22, 20, 20) rnds in Light Blue (col 13).

Raglan incs: When working in rnds, M1R before and after each marked st on every alt rnd; when working in rows, M1R before and after each marked st on RS rows, M1L before and after each marked st on WS rows.

Short-rows: Always work a yo (yo right needle) at beg of row. Work yo tog with next st as k2tog on RS rows, p2tog on WS rows as you come to them.

Gauge: 20 sts and 30 rows/rnds = 10 x 10 cm in St st on size 4.5 mm needles.

Pullover: Worked top down and in the rnd. With shorter size 3.5 mm circular needle and Azure (col 85) cast on 106 sts. Place beg of rnd marker (M) and join for working in rnds. M is at center back. Work in rib patt for 4 cm. Change to shorter size 4.5 mm circular needle. Set-up rnd: K17 = right half back; k1 = raglan and mark this st; k17 = right shoulder; k1

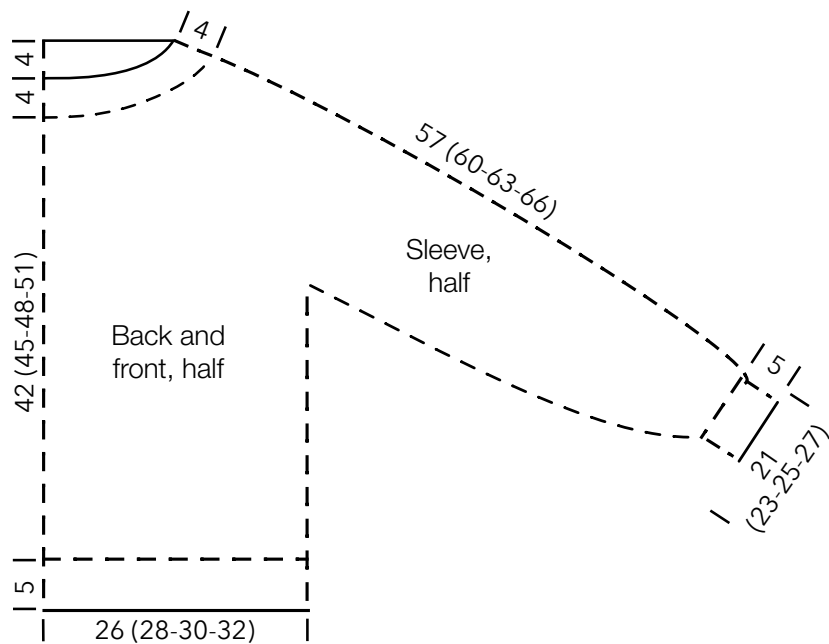
= raglan and mark this st; k34 = front; k1 = raglan and mark this st; k17 = left shoulder; k1 = raglan and mark this st, k17 = left half of back. Work raglan incs and shape front neck with short-rows: **Short-row 1 (RS):** Knit to front and work raglan incs, k2 front sts, turn. **Short-row 2 (WS):** Yo, purl to M, SM (slide marker), purl to front and work raglan incs, p2 front sts, turn. **Short-row 3 (RS):** Yo, knit to M, SM, knit to yo and work raglan incs, ktog yo and next st, k1, turn. **Short-row 4 (WS):** Yo, purl to M, SM, purl to yo and work raglan incs, ptog yo and next st, p1, turn. Work short-rows 3 and 4 a total of 6 times. Next row (RS): Yo, knit to M = 56 sts increased and 162 sts total. Continue in rnds and follow stripe patt. Next rnd: Knit all sts, work raglan incs and at same time, work first yo you come to at front neck edge tog with next st, work to 1 st before next yo at front neck edge, ktog st and yo. Next rnd: Knit all sts. Work 43 (51, 59, 67) more rnds, working incs at marked sts as established every alt rnd = 346 (378, 410, 442) sts: 94 (102, 110, 118) sts each for back and front, 77 (85, 93, 101) sts for each shoulder and 4 raglan sts. Change to longer size 4.5 mm circular needle as stitch count increases. **Divide for body and sleeves:** K48 (52, 56, 60) = 47 (51, 55, 59) back sts + 1 raglan st; place next 77 (85, 93, 101) sts on holder for sleeve, cast on 10 sts for underarm, k96 (104, 112, 120) = 94 (102, 110, 118) front sts + 2 raglan sts; place next 77 (85, 93, 101) sts on holder for sleeve, cast on 10 sts for underarm, k48 (52, 56, 60) = 47 (51, 55, 59) back sts + 1 raglan st = 212 (228, 244, 260) sts for body. Cont in St st, work to end of stripe patt. Change to longer size 3.5 mm circular needle. Work in rib patt for 5 cm. Bind off all sts.

Sleeves: With RS facing, beg at center of underarm, pick up and k5 sts along underarm cast-on, knit 77 (85, 93, 101) held sleeve sts, pick up and k 5 sts along underarm cast-on = 87 (95, 103, 111) sts. Place markers before and after center 3 underarm sts and join for working in rnds. Cont in St st and stripe patt and shape sleeve: Dec 2 sts every 10 (8, 7, 6)th rnd 12 (15, 18, 21) times as foll: S2kp over center 3 underarm sts = 63 (65, 67, 69) sts. Change to size 4.5 mm dpns as stitch count decreases. Cont in St st, work to end of stripe patt. Change to size 3.5 mm dpns. Work in rib patt for 5 cm, decreasing 1 st on first rnd = 62 (64, 66, 68) sts. Bind off all sts.

Finishing: Carefully weave in all ends. If needed, close underarm seams. If desired, work 1 rnd slip stitch around neck edge with Azure.

PULLOVER · ECOPUNO

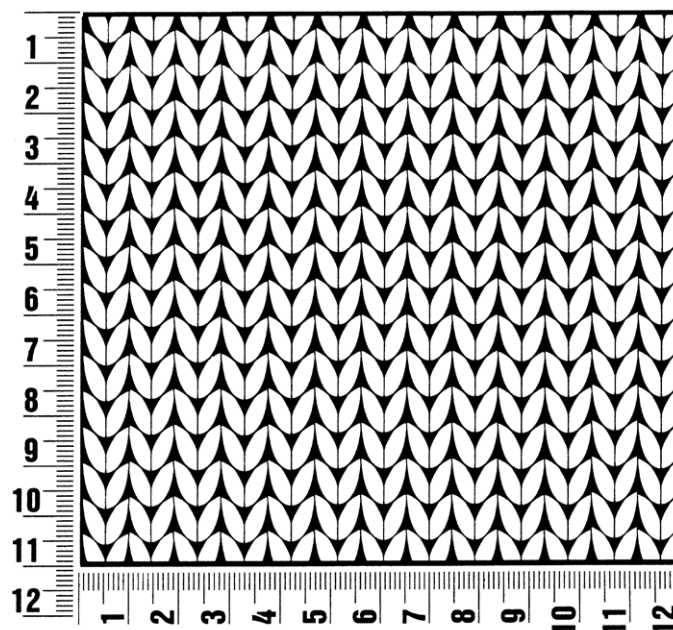
Design 15 – Lookbook 18



Gauge Swatch

Before you begin ...

...make a gauge swatch. Use the recommended needles, yarns and pattern stitch for your gauge swatch. It should measure approx. 12 cm x 12 cm. Cast-on and bind-off rows, as well as selvedge stitches should not be included in the measurement. Pin your swatch and block it as you would the finished pieces of the garment. Count stitches and rows over 10 cm. If your gauge swatch is too small, switch to larger needles. If your gauge swatch is too big, switch to smaller needles.



Abbreviations

beg = begin(ning) · **ch** = chain · **cont** = continue · **dec** = decreas(e)(ing) · **inc** = increas(e)(ing) · **k** = knit · **kwise** = as if to knit
meas = measures · **M1L** = lift strand between sts from front to back and knit this strand through the back loop · **M1R** = lift strand between sts from the back and knit this strand through the front loop · **patt** = pattern · **pm** = place marker · **p** = purl
pwise = as if to purl · **rem** = remain(ing) · **rep** = repeat(s) · **rev St st** = reverse stockinette stitch · **rnd(s)** = round(s) · **RS** = right side · **sc** = single crochet · **skp** = slip 1 stitch as if to knit, knit 1 stitch, pass slipped stitch over knitted stitch · **sk2p** = slip 1 stitch as if to knit, knit 2 together, pass slipped stitch over knitted stitch · **s2kp** = slip 2 stitches as if to knit, k 1 stitch, pass slipped stitches over knitted stitch · **sl** = slip · **st(s)** = stitch(es) · **St st** = stockinette stitch · **tbl** = through the back loop · **tog** = together · **wyib** = with yarn in back of work · **wyif** = with yarn in front of work · **WS** = wrong side · **yo(s)** = yarn over(s)

Publisher's Info

Publisher: Lana Grossa GmbH, Gaimersheim, www.lana-grossa.com

Photographer: Nicolas Olonetzky, www.olonetzky.com