



© Lana Grossa GmbH

Design 4 – natural KNITS 01

**CROCHET JACKET
BOTTONI**

CROCHET JACKET · BOTTONI

Design 4 – natural KNITS 01



Size 36/38 (40 – 44, 46/48)

Instructions are given for first size. Figures in parenthesis refer to larger sizes. When only one figure is given, it applies to all sizes.

Materials: 750 (850, 950) g of Lana Grossa **Bottoni** (53% cotton, 24% viscose, 23% superfine Merino wool; 125 m/50 g) in Grey Beige/Cream (**col 13**). Size 4 and 4.5 mm crochet hook.

Chart A: Main patt for back and sleeves. Multiple of 5 + 1 + 1 t-ch (does not count as sc). Numbers at left edge of chart indicate WS rows, numbers at right edge of chart indicate RS rows. Chart begins with a WS row. Work first sc on first row in 2nd ch from hook. Work to patt rep, work sts between arrows for patt rep, work to end of chart. Work rows 1 – 8 once, then rep rows 5 – 8.

Chart B: Main patt for left front and patt for front band. Work main patt for a total of 72 rows. Work rows 73 and 74 as given in instructions. Cont with front band as given in instructions.

Chart C: Main patt for right front and patt for front band. Work main patt for a total of 72 rows. Work rows 73 and 74 as given in instructions. Cont with front band as given in instructions.

Gauges: 3 patt reps and 11 rows = 9.5 x 10 cm in main patt with size 4.5 mm hook; 20 modified hdc (mhdc) and 18 rows = 10 x 10 cm with size 4 mm hook.

Back: Worked from the bottom up. Arrow on schematic shows direction of work. With size 4.5 mm hook ch 96 (106, 116) + ch 1. Work chart A for 72 rows and piece meas 66 cm, working 19 (21, 23) patt reps across row. To end with a straight edge, work row 73 of chart B. Change to size 4 mm hook. Work row 74 of chart B. Fasten off.

Left front: Worked from the bottom up. Arrow on schematic shows direction of work. With size 4.5 mm hook ch 26 (31, 36) + ch 1. Work chart B for 72 rows, working 5 (6, 7) patt reps across row. To end with a straight edge, work row 73, change to size 4 mm hook, work row 74. Do not turn at end of row 74. **Work front band and shape neck:** Ch 2 at end of row 74. Work 1 row sc along front edge, working approx. 6 sc for every 4 rows. Last sc is worked in row end of row 1 of main patt = 110 sts (ch 2 at beg of row counts as 1 st). Ch 28 + ch 1 at end of row for bottom edge of front band. **Row 1:** Mhdc in 2nd ch from hook and each ch across, sl st in each

of next 2 sc at front edge, turn. **Row 2:** Mhdc blo in each st across, turn. **Row 3:** Ch 1, mhdc blo in each st across, sl st in each of next 2 sc at front edge, turn. Rep rows 2 and 3 until total of 67 rows has been worked for front band and front band meas 38 cm. **Shape neck: Row 4 (dec row):** Mhdc blo in each st across to last 2 sts, mhdc2tog, turn. **Row 5:** As row 3. Rep rows [4 and 5] 19 more times. Work rows 2 and 3, then work row 2 once more. Fasten off.

Right front: Work same as left front, work chart C for 72 rows. Work row 73, fasten off at end of row and cut yarn. Using size 4 mm hook and with WS facing, rejoin yarn with a sl st. Work row 74 as a WS row. Ch 2 at end of row 74, work 1 row sc along front edge same as for left front. Fasten off at end of row and cut yarn. **Work front band and shape neck:** Using size 4 mm hook and with WS facing, rejoin yarn with a sl st to neck edge. Ch 8, + ch 1 for top edge of front band. **Row 1:** Mhdc in 2nd ch from hook and each ch across, sl st in each of next 2 sc at front edge, turn. **Row 2:** Mhdc blo in each st across, turn. **Row 3:** Ch 1, mhdc blo in each st across, sl st in each of next 2 sc at front edge, turn. **Row 4 (inc row):** Mhdc blo in each st across to last st, 2 mhdc blo in last st, turn. **Row 5:** As row 3. Rep rows [4 and 5] 19 more times. Rep rows 2 and 3 to end, ending with a row 2. Fasten off.

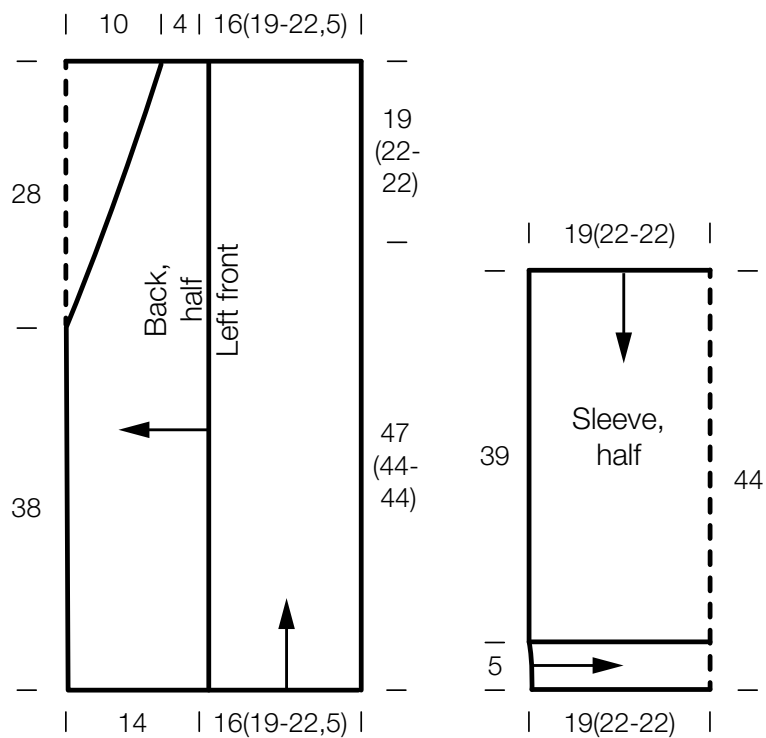
Finishing 1: Sew shoulder seams. Using size 4 mm hook and with RS facing, work 1 row sc along left side edge of body, working approx. 6 sc for every 4 rows and 1 sc in shoulder seam. Rep along right side edge of body.

Sleeves: Worked from the top down. Mark 30 (35, 35) sc either side of shoulder line. With WS facing and using size 4.5 mm hook, join yarn with a sl st to armhole edge at marked st. Work row 1 of chart A, working patt rep 6 (7, 7) times, 1 sc in shoulder seam, work patt rep 6 (7, 7) times to marked st. Work ch-3 sps over 2 skipped sc sts. Work chart A for a total of 42 rows and sleeve meas 39 cm. Work chart row 3, working ch-2 sps in place of ch-3 sps. Change to size 4 mm hook. Work 1 row sc. **Cuff:** Ch 10 + ch 1. **Row 1:** Mhdc in 2nd ch from hook and each ch across, sl st in each of next 2 sc at bottom edge of sleeve, turn. **Row 2:** Mhdc blo in each st across, turn. **Row 3:** Ch 1, mhdc blo in each st across, sl st in each of next 2 sc, turn. Rep rows 2 and 3 to end of sleeve, ending with a row 2. Fasten off.

Finishing 2: Pin piece to measurements and block. Sew side and sleeve seams.

CROCHET JACKET · BOTTONI

Design 4 – natural KNITS 01



CROCHET JACKET · BOTTONI

Design 4 – natural KNITS 01



Charts A – C

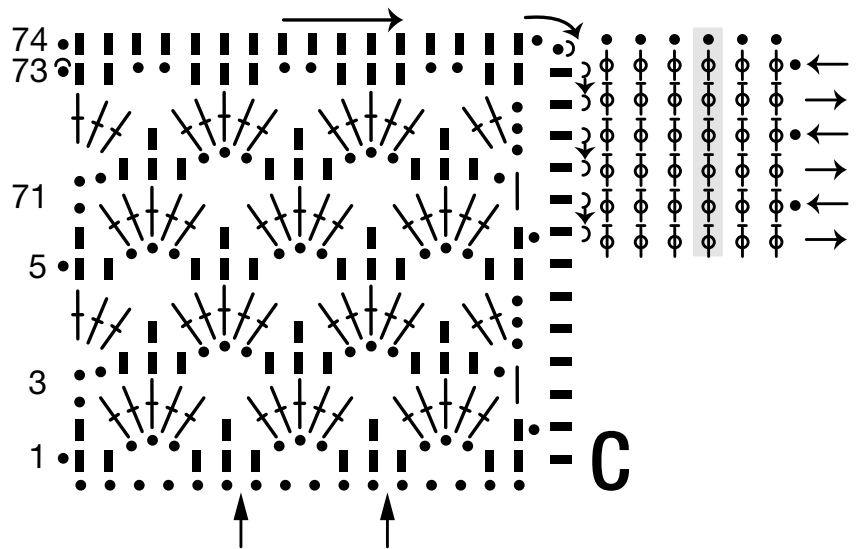
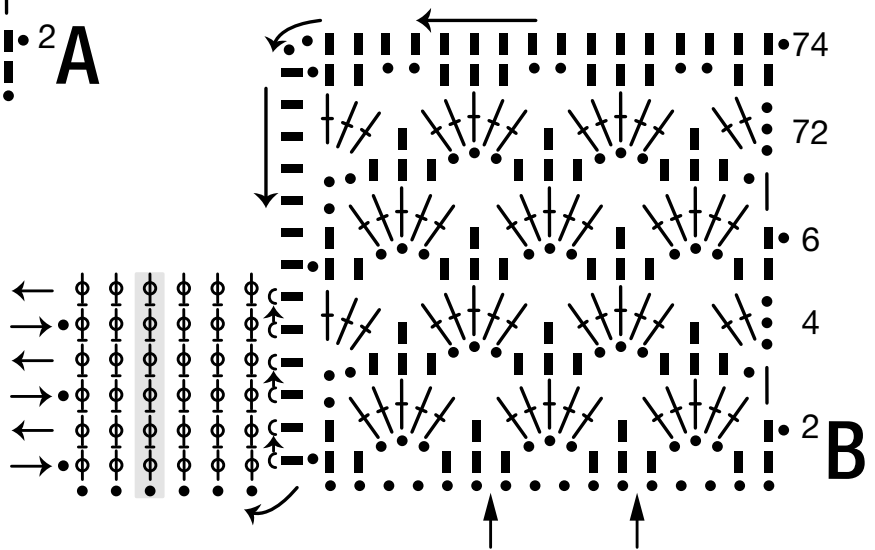
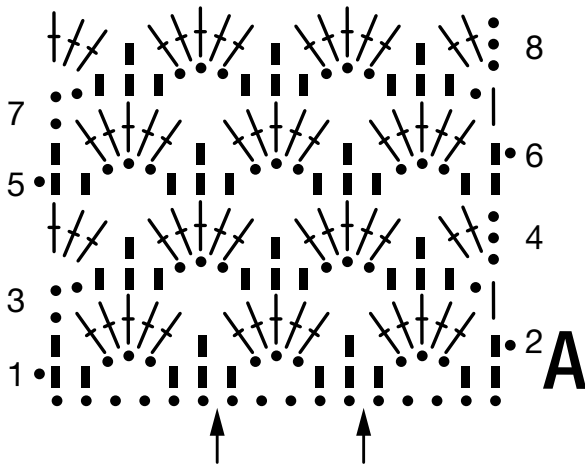


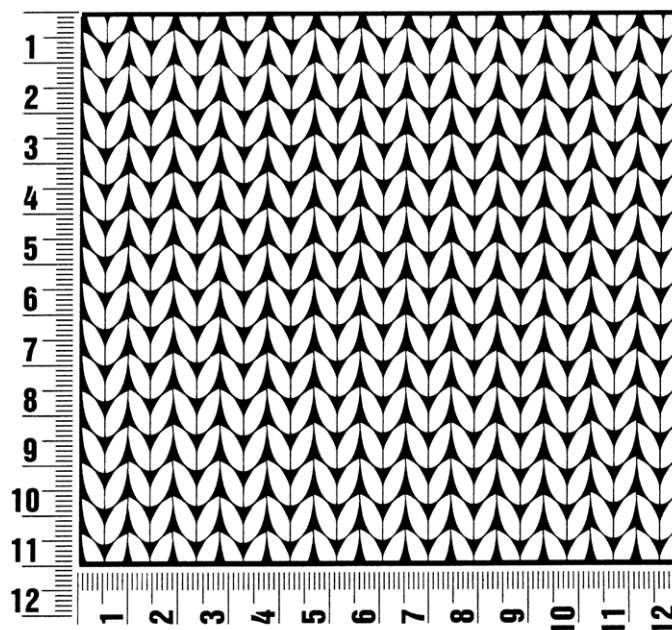
Chart key:

- = chain (ch)
- ⤿ = slip stitch (sl st)
- = single crochet (sc)
- | = half double crochet (hdc)
- ⊥ = double crochet (dc)
- ⊕ = modified hdc (mhdc): wrap yarn over hook, insert hook into work, wrap yarn over hook and draw through work and both loops on hook
- ⊖ = mhdc blo (work through back loop only)

Gauge Swatch

Before you begin ...

...make a gauge swatch. Use the recommended needles, yarns and pattern stitch for your gauge swatch. It should measure approx. 12 cm x 12 cm. Cast-on and bind-off rows, as well as selvage stitches should not be included in the measurement. Pin your swatch and block it as you would the finished pieces of the garment. Count stitches and rows over 10 cm. If your gauge swatch is too small, switch to larger needles. If your gauge swatch is too big, switch to smaller needles.



Abbreviations

beg = begin(ning) · **ch** = chain · **cont** = continue · **dec** = decompas(e)(ing) · **inc** = increas(e)(ing) · **k** = knit · **kwise** = as if to knit
meas = measures · **M1L** = lift strand between sts from front to back and knit this strand through the back loop · **M1R** = lift strand between sts from the back and knit this strand through the front loop · **patt** = pattern · **pm** = place marker · **p** = purl
pwise = as if to purl · **rem** = remain(ing) · **rep** = repeat(s) · **rev St st** = reverse stockinette stitch · **rnd(s)** = round(s) · **RS** = right side · **sc** = single crochet · **skp** = slip 1 stitch as if to knit, knit 1 stitch, pass slipped stitch over knitted stitch · **sk2p** = slip 1 stitch as if to knit, knit 2 together, pass slipped stitch over knitted stitch · **s2kp** = slip 2 stitches as if to knit, k 1 stitch, pass slipped stitches over knitted stitch · **sl** = slip · **st(s)** = stitch(es) · **St st** = stockinette stitch · **tbl** = through the back loop · **tog** = together · **wyib** = with yarn in back of work · **wyif** = with yarn in front of work · **WS** = wrong side · **yo(s)** = yarn over(s)

Publisher's Info

Publisher: Lana Grossa GmbH, Gaimersheim, www.lana-grossa.com

Photographer: Theresa Rudzki, www.theresarudzki.com