



© Lana Grossa GmbH

Design 22 – natural KNITS 01

JACKET BOTTONI

JACKET · BOTTONI

Design 22 – natural KNITS 01



Size 36/38 (40 – 44, 46/48)

Instructions are given for first size. Figures in parenthesis refer to larger sizes. When only one figure is given, it applies to all sizes.

Materials: 450 (500, 550) g of Lana Grossa **Bottoni** (53% cotton, 24% viscose, 23% superfine Merino wool; 125 m/50 g) in Lilac/Off White (**col 5**); waste yarn for provisional cast-on; size 6 mm circular needle, 80 cm long.

One-stitch selvage: On every row: Sl first st kwise, k last st.

St st: K on RS, p on WS.

Main patt: Work according to chart. Numbers at right edge of chart indicate RS rows, numbers at left edge of chart indicate WS rows. Two-stitch selvage is shown in grey on chart. Work to patt rep, work 3 sts between arrows for patt rep, work to end of chart. Work rows 1 – 4 once, then rep rows 3 and 4.

Full-fashion increase: At beg of row, two-stitch selvage, 6 sts in patt; k2tog tbl [= 1 st, 1 yo], leave st on left needle, then p1, k1, p1 into st; resume patt with yo. At end of row, work to last 9 sts, [k1, p1, k1, p1] in next st, 6 sts in patt, two-stitch selvage – 3 sts increased.

Full-fashion decrease: At beg of row, one-st selvage (two-stitch selvage), 6 sts in patt, k5tog tbl [= 1 st, 1 yo, 2 sts, 1 yo]; at end of row, work to last 10 (11) sts, k5tog tbl [= 1 st, 1 yo, 2 sts, 1 yo], 4 sts in patt, one-st selvage (two-stitch selvage) – 3 sts decreased.

Gauge: 24.5 sts and 32 rows = 10 x 10 cm in main patt on size 6 mm needles.

Note: Jacket is worked in 3 pieces which are worked side to side.

Left half of back and sleeve: Begins at center of back. Using size 6 mm circular needle and waste yarn, cast on 127 (133, 139) sts. Work in St st for 2 rows. Using Bottoni work chart for 36 rows = 11 cm and end of neck/beg of shoulder has been reached. Next row (RS): K2tog, patt to end = 126 (132, 138) sts. Working a one-st selvage at right (= shoulder) edge, cont in patt for 19 (25, 31) rows and shoulder meas 6 (8, 10) cm. **Note:** Overarm and sleeve shaping are worked simultaneously; read the following section all the way through before proceeding. Shape overarm: Working full-fashion dec, dec 3 sts at beg of next RS row, then every 12th row 8 times.

At same time, when a total of 71 (77, 83) rows = 22 (24, 26) has been worked in main patt, bind off 12 (15, 18) sts at beg of next WS row for left side edge, work 1 st in St st (= p1), patt to end. Shape sleeve: Next RS (dec) row: Patt to last 11 sts, k5tog tbl [= 1 st, 1 yo, 2 sts, 1 yo], 4 sts in patt, 1 st in St st, one-st selvage. Rep RS dec row every 12th row 1 time, then every 10th row 2 times, then every 8th row 2 times, then every 6th row 4 times = 57 (60, 63) sts. Maintaining 1 st in St st and one-st selvage at left edge, cont in main patt until a total of 100 rows has been worked for sleeve and sleeve meas 31 cm. Bind off all sts.

Right half of back and sleeve: Undo provisional cast-on and place live sts on needle. Work same as left half of back and sleeve, reversing all shaping and positioning of selvage sts.

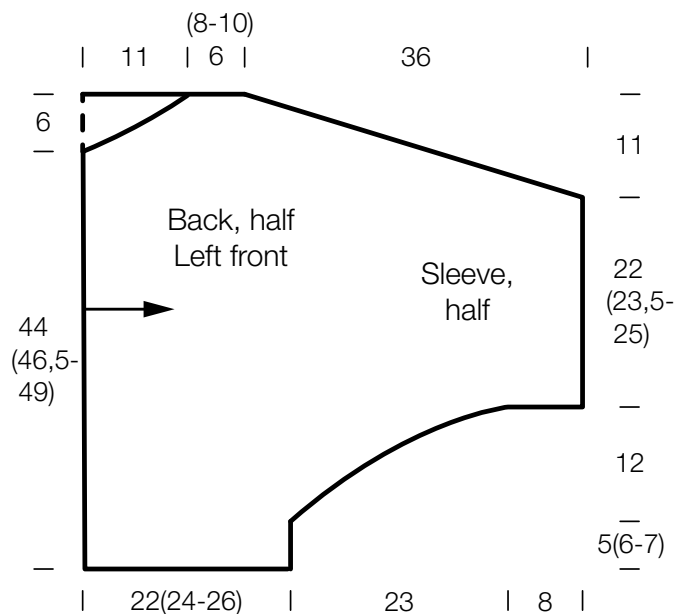
Left front and sleeve: With size 6 mm circular needle and Bottoni cast on 112 (118, 124) sts. Work chart for 4 rows, ending with a WS row. Shape neck: Working full-fashion inc, inc 3 sts at end of next RS row, then every 8th row 3 times, then every 6th row 1 time = 127 (133, 139) sts. Work increased sts into patt. Work 1 WS row. A total of 36 rows has been worked from cast-on, piece meas 11 cm from cast-on and end of neck/beg of shoulder has been reached. Next row (RS): Patt to last 2 sts, k2tog. Working a one-st selvage at left (= shoulder) edge, cont in patt for 19 (25, 31) rows and shoulder meas 6 (8, 10) cm. **Note:** Overarm and sleeve shaping are worked simultaneously; read the following section all the way through before proceeding. Shape overarm: Working full-fashion dec, dec 3 sts at end of next RS row, then every 12th row 8 times. At same time, when a total of 70 (76, 82) rows = 22 (24, 26) has been worked in main patt, bind off 12 (15, 18) sts at beg of next RS row for left side edge, work 1 st in St st (= k1), patt to end. Next row (WS): Patt to last 2 sts, 1 st in St st, one-st selvage. Shape sleeve: Next RS (dec) row: One-st selvage, 1 st in St st, 6 sts in patt, k5tog tbl [= 1 st, 1 yo, 2 sts, 1 yo], patt to end. Rep RS dec row every 12th row 1 time, then every 10th row 2 times, then every 8th row 2 times, then every 6th row 4 times = 57 (60, 63) sts. Maintaining 1 st in St st and one-st selvage at right edge, cont in main patt until a total of 100 rows has been worked for sleeve and sleeve meas 31 cm. Bind off all sts.

Right front and sleeve: Work same as left front and sleeve, reversing all shaping and positioning of selvage st.

Finishing: Pin pieces to measurements and block. Sew side and sleeve seams.

JACKET · BOTTONI

Design 22 – natural KNITS 01



Chart

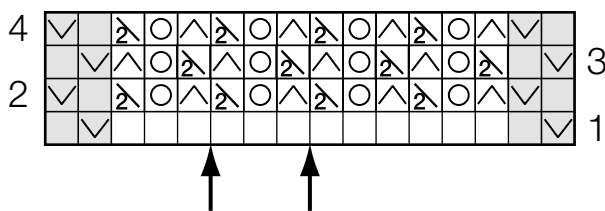


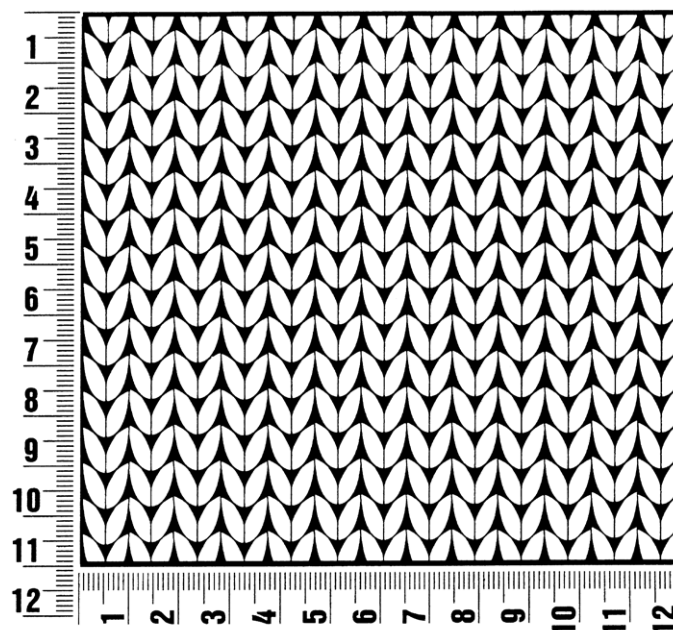
Chart key:

- = k1
- = yo
- △ = k2tog tbl
- ▽ = sl 1 pwise wyif
- △ = sl 1 pwise wyib

Gauge Swatch

Before you begin ...

...make a gauge swatch. Use the recommended needles, yarns and pattern stitch for your gauge swatch. It should measure approx. 12 cm x 12 cm. Cast-on and bind-off rows, as well as selvage stitches should not be included in the measurement. Pin your swatch and block it as you would the finished pieces of the garment. Count stitches and rows over 10 cm. If your gauge swatch is too small, switch to larger needles. If your gauge swatch is too big, switch to smaller needles.



Abbreviations

beg = begin(ning) · **ch** = chain · **cont** = continue · **dec** = decreas(e)(ing) · **inc** = increas(e)(ing) · **k** = knit · **kwise** = as if to knit
meas = measures · **M1L** = lift strand between sts from front to back and knit this strand through the back loop · **M1R** = lift strand between sts from the back and knit this strand through the front loop · **patt** = pattern · **pm** = place marker · **p** = purl
pwise = as if to purl · **rem** = remain(ing) · **rep** = repeat(s) · **rev St st** = reverse stockinette stitch · **rnd(s)** = round(s) · **RS** = right side · **sc** = single crochet · **skp** = slip 1 stitch as if to knit, knit 1 stitch, pass slipped stitch over knitted stitch · **sk2p** = slip 1 stitch as if to knit, knit 2 together, pass slipped stitch over knitted stitch · **s2kp** = slip 2 stitches as if to knit, k 1 stitch, pass slipped stitches over knitted stitch · **sl** = slip · **st(s)** = stitch(es) · **St st** = stockinette stitch · **tbl** = through the back loop · **tog** = together · **wyib** = with yarn in back of work · **wyif** = with yarn in front of work · **WS** = wrong side · **yo(s)** = yarn over(s)

Publisher's Info

Publisher: Lana Grossa GmbH, Gaimersheim, www.lana-grossa.com

Photographer: Theresa Rudzki, www.theresarudzki.com