



© Lana Grossa GmbH

Design 43 – Filati Journal 69

PULLOVER MAGLIA

PULLOVER · MAGLIA

Design 43 – Filati Journal 69



Size 34/36 (38/40, 42/44, 46/48)

Instructions are given for first size. Figures in parenthesis refer to larger sizes. When only one figure is given, it applies to all sizes.

Materials: 350 (400, 450, 500) g of Lana Grossa **Maglia** (92% cotton, 8% polyester; 155 m/50 g) in Off White/ Red/ Green/Yellow/Light Blue (**col 1**). Size 3.5 and 4.5 mm needles; size 3.5 mm circular needle, 50 cm long.

Selvage sts: On every row: Knit first and last st.

Rib patt: K1, p1.

Charts: Charts show RS rows only. Read RS rows from right to left. On WS rows work sts as they appear, purl all yos or work according to chart key.

Chart A: Multiple of 4 + 2 + 2 selvage sts. Rep rows 1 – 8.

Chart B: Multiple of 2 + 2 selvage sts. Work rows 1 – 10 once, then work rows [5 – 10] 3 times, then work rows 11 – 18 once.

Chart C: Multiple of 2 + 2 selvage sts. Rep rows 1 – 4.

Gauges: On size 4.5 mm needles: 20 sts and 31 rows = 10 x 10 cm in chart patt A; 20 sts and 30 rows = 10 x 10 cm in chart patt B; 20 sts and 29 rows = 10 x 10 cm in chart patt C.

Back: With size 3.5 mm needles cast on 111 (119, 127, 135) sts. **Row 1 (WS):** Selvage st, * p1, k1; rep from * to last 2 sts, p1, selvage st. Working sts as they appear on foll rows work in rib patt for a total of 13 rows and piece meas 4 cm from cast-on, increasing 1 st at end of last WS row = 112 (120, 128, 136) sts. Change to size 4.5 mm needles. Work chart A

for 28 rows = 9 cm. Work chart B for 36 rows = 12 cm. Work chart C for 26 rows = 9 cm and at same time, when chart C has been worked for 6 cm, place marker in first and last st on last WS row to indicate beg of armholes. Work chart A for 28 rows = 9 cm. Work chart B to end of back and when piece meas 19 (20, 21, 22) cm from armhole markers and last row worked is a WS row, shape shoulders: At each shoulder edge bind off 6 sts 6 times (6 sts 2 times, 7 sts 4 times / 7 sts 4 times, 8 sts 2 times / 8 sts 6 times). Bind off rem 40 sts.

Front: Work same as back until 48 (52, 54, 58) rows has been worked from armhole markers and armhole meas 16 (17, 18, 19) cm. Shape neck: Next row (RS): Bind off center 20 sts. Working each side separately, bind off 2 sts at each neck edge 3 times, 1 st 4 times and when same length as back to shoulders, shape shoulders same as for back. No sts rem.

Sleeves: With size 3.5 mm needles cast on 59 (59, 63, 63) sts. **Row 1 (WS):** Selvage st, * p1, k1; rep from * to last 2 sts, p1, selvage st. Working sts as they appear on foll rows work in rib patt for a total of 7 rows and piece meas 2 cm from cast-on, increasing 1 st at end of last WS row = 60 (60, 64, 64) sts. Change to size 4.5 mm needles. Work chart A and shape sleeve: Inc 1 st at each end of 13 (9, 9, 11)th row, then every 12 (10, 10, 8)th row 7 (9, 9, 11) times = 76 (80, 84, 88) sts. Work increased sts into patt. Work even until chart A has been worked for a total of 108 rows and piece meas 35 cm from end of rib patt. Bind off all sts.

Finishing: Pin pieces to measurements and block. Carefully weave in all ends. Sew shoulder seams. **Neckband:** With size 3.5 mm circular needle pick up and k 94 sts evenly around neck edge. Place beg of rnd marker and join for working in rnds. Work in rib patt for 4 rnds. Bind off all sts in rib. Sew on sleeves between markers. Sew side and sleeve seams.

PULLOVER · MAGLIA

Design 43 – Filati Journal 69



Chart A

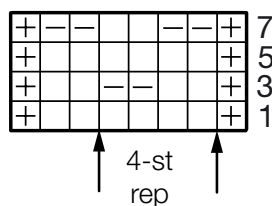


Chart B

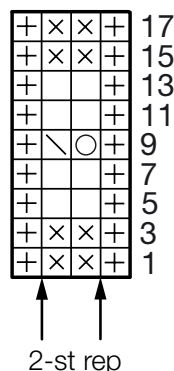


Chart C

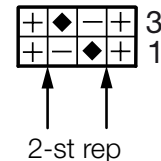
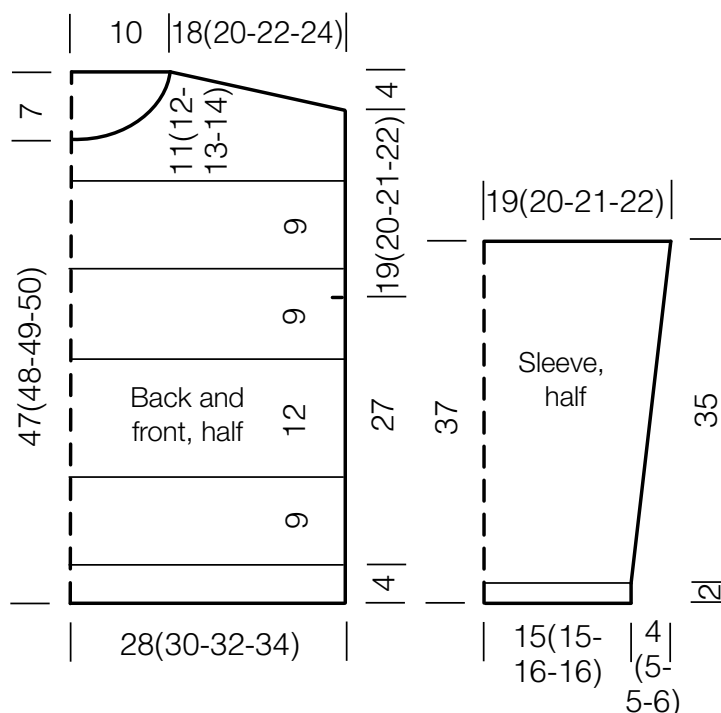


Chart key:

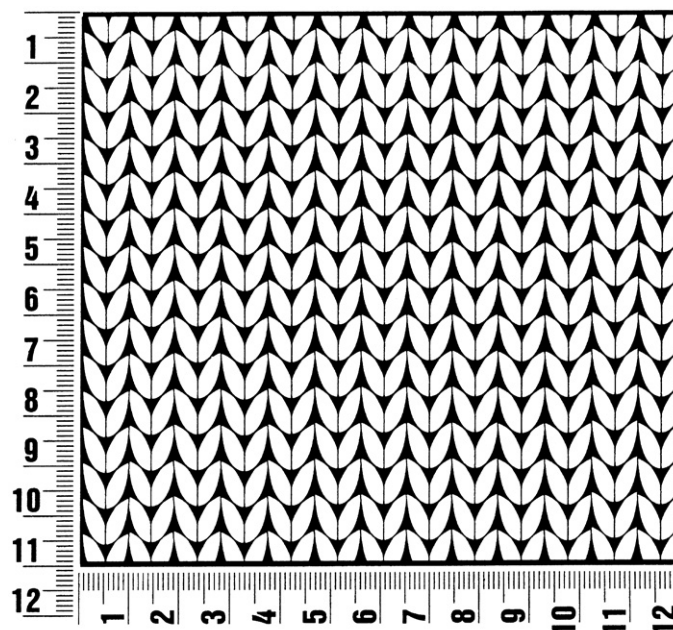
- ⊕ = selvage st
- = k1
- ▢ = p1
- ⊗ = k1 on RS and WS
- ◆ = k1tbl on RS, p1tbl on WS
- ⊙ = yo
- ⊞ = skp: sl 1 kwise, k1, pass slipped st over knitted st



Gauge Swatch

Before you begin ...

...make a gauge swatch. Use the recommended needles, yarns and pattern stitch for your gauge swatch. It should measure approx. 12 cm x 12 cm. Cast-on and bind-off rows, as well as selvedge stitches should not be included in the measurement. Pin your swatch and block it as you would the finished pieces of the garment. Count stitches and rows over 10 cm. If your gauge swatch is too small, switch to larger needles. If your gauge swatch is too big, switch to smaller needles.



Abbreviations

beg = begin(ning) · **ch** = chain · **cont** = continue · **dec** = decreas(e)(ing) · **inc** = increas(e)(ing) · **k** = knit · **kwise** = as if to knit
meas = measures · **M1L** = lift strand between sts from front to back and knit this strand through the back loop · **M1R** = lift strand between sts from the back and knit this strand through the front loop · **patt** = pattern · **pm** = place marker · **p** = purl
pwise = as if to purl · **rem** = remain(ing) · **rep** = repeat(s) · **rev St st** = reverse stockinette stitch · **rnd(s)** = round(s) · **RS** = right side · **sc** = single crochet · **skp** = slip 1 stitch as if to knit, knit 1 stitch, pass slipped stitch over knitted stitch · **sk2p** = slip 1 stitch as if to knit, knit 2 together, pass slipped stitch over knitted stitch · **s2kp** = slip 2 stitches as if to knit, k 1 stitch, pass slipped stitches over knitted stitch · **sl** = slip · **st(s)** = stitch(es) · **St st** = stockinette stitch · **tbl** = through the back loop · **tog** = together · **wyib** = with yarn in back of work · **wyif** = with yarn in front of work · **WS** = wrong side · **yo(s)** = yarn over(s)

Publisher's Info

Publisher: Lana Grossa GmbH, Gaimersheim, www.lana-grossa.com
Photographer: Nicolas Olonetzky, www.nicolasolonetzky.com