



© Lana Grossa GmbH

Design 17 – Classici 28

---

# TOP DIVERSA

# TOP • DIVERSA

## Design 17 – Classici 28



**Size** 36/38 (40/42, 44/46, 48)

Instructions are given for first size. Figures in parenthesis refer to larger sizes. When only one figure is given, it applies to all sizes.

**Materials:** 200 (250, 350, 400) g of Lana Grossa **Diversa** (74% cotton, 26% viscose; 210 m/50 g) in Grey Purple (**col 24**). Size 4 mm needles and circular needle, 60 cm long; size 3.5 mm circular needles, 40 and 60 cm long.

**Rib patt:** K1, p1.

**St st:** K on RS, p on WS.

**Main patt in rows:** Multiple of 4 + 2. Work according to chart 1. Chart shows RS rows only. Read RS rows from right to left. On WS rows purl all sts and yos. Rep rows 1 – 8.

**Main patt in rnds:** Multiple of 4. Work according to chart 2. Numbers at right edge of chart indicate rnds. On all rnds not shown on chart knit all sts and yos. Work all rnds from right to left. Rep rnds 1 – 8.

**Selvage sts:** On every row: Knit first and last st. Selvage sts are not included on chart 1.

**M1L:** Lift strand between sts from the front. Knit this strand through the back loop on RS rows, purl this strand through the back loop on WS rows.

**M1R:** Lift strand between sts from the back. Knit this strand through the front loop on RS rows, purl this strand through the front loop on WS rows.

**Gauge:** 19 sts and 28 rows = 10 x 10 cm in main patt on size 4 mm needles.

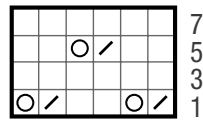
**Note:** This top is worked seamlessly from the top down.

**Back:** With size 4 mm needles cast on 45 sts. Purl 1 WS row. Shape shoulders: **Row 1 (RS):** Selvage st, 2 sts in St st, M1L, knit to last 3 sts, M1R, 2 sts in St st, selvage st. **Set-up row 2 (WS):** Selvage st, 2 sts in St st, M1R, knit to last 3 sts, M1L, 2 sts in St st, selvage st = 49 sts. Work in main patt and cont increases. **Row 1 (RS):** Selvage st, 2 sts in St st, M1L, 1 st in St st, work main patt to last 3 sts, M1R, 2 sts in St st, selvage st. **Row 2 (WS):** Selvage st, 2 sts in St st, M1R, work main patt to last 4 sts, 1 st in St st, M1L, 2 sts in St st, selvage st = 53 sts. Work last 2 rows 6 (7, 8, 9) more times, then work row 1 once

more = 79 (83, 87, 91) sts. **Next row (WS):** Selvage st, 1 st in St st, work main patt to last 3 sts, 2 sts in St st, selvage st. **Next row (RS):** Selvage st, 2 sts in St st, work main patt to last 2 sts, 1 st in St st, selvage st. Work last 2 rows for a total of 11.5 (11.5, 12, 12.5) cm, ending with a chart row 2 or 6. **Shape armholes:** **Next row (RS):** Selvage st, 2 sts in St st, M1L, work main patt to last 2 sts, 1 st in St st, selvage st = 80 (84, 88, 92) sts. **Next row (RS):** Selvage st, 2 sts in St st, M1L, k1, work main patt to last 3 sts, M1R, 2 sts in St st, selvage st = 82 (86, 90, 94) sts. Rep last RS row 7 (8, 9, 10) more times = 96 (102, 108, 114) sts. Work 1 WS row. Place sts on holder, cut yarn. **Left front:** With size 4 mm needles and RS facing, pick up and k 17 (19, 21, 23) sts along left shoulder of back. Purl 1 WS row. **Next row (RS):** Selvage st, 2 sts in St st, work main patt to last 2 sts, 1 st in St st, selvage st. Work in patt as set by last row for a total of 5 cm, ending with a chart row 2 or 6. **Shape neck:** **Next row (RS):** Selvage st, 2 sts in St st, M1L, work main patt to last 2 sts, 1 st in St st, selvage st. **Note:** When working shaping, make sure each yo is paired with a decrease. Rep last RS row 8 more times = 26 (28, 30, 32) sts. Work 1 WS row. Place sts on holder, cut yarn. **Right front:** With size 4 mm needles and RS facing pick up and k 17 (19, 21, 23) sts along right shoulder of back. Work same as left front to neck shaping, ending with a patt row 8 or 4. **Next row (RS):** Selvage st, 2 sts in St st, work main patt to last 2 sts, M1R, 1 st in St st, selvage st. **Note:** When working shaping, make sure each yo is paired with a decrease. Rep last RS row 7 more times = 25 (27, 29, 31) sts. Work 1 WS row. Leave sts on needle, do not cut yarn. **Next row (RS):** Work in patt over right front sts, cast on 28 sts, work in patt over left front sts = 79 (83, 87, 91) sts. Cont in patt across all sts until same length as back to armholes. Shape armholes same as for back = 96 (102, 108, 114) sts. **Join front and back:** **Next row (RS):** With size 4 mm circular needle work in patt over front sts, cast on 6 (6, 6, 8) sts, work in patt over back sts, cast on 6 (6, 6, 8) sts = 204 (216, 228, 244). Join for working in rnds and keeping patt correct, work main patt in rnds for 28 (28, 28, 30) cm, ending with a patt rnd 4 or 8. Change to longer size 3.5 mm circular needle. Work in rib patt for 5 cm. Bind off all sts in rib.

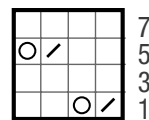
**Finishing:** Pin piece to measurements and block. **Neckband:** With shorter size 3.5 mm circular needle pick up and k 122 sts evenly around neck edge. Place beg of rnd marker and join for working in rnds. Work in rib patt for 3 cm. Bind off all sts in rib. **Armhole bands:** With shorter size 3.5 mm circular needle pick up and k 108 (112, 116, 120) sts evenly around armhole edge. Place beg of rnd marker and join for working in rnds. Work in rib patt for 3 cm. Bind off all sts in rib.

**Chart 1**



4-st rep

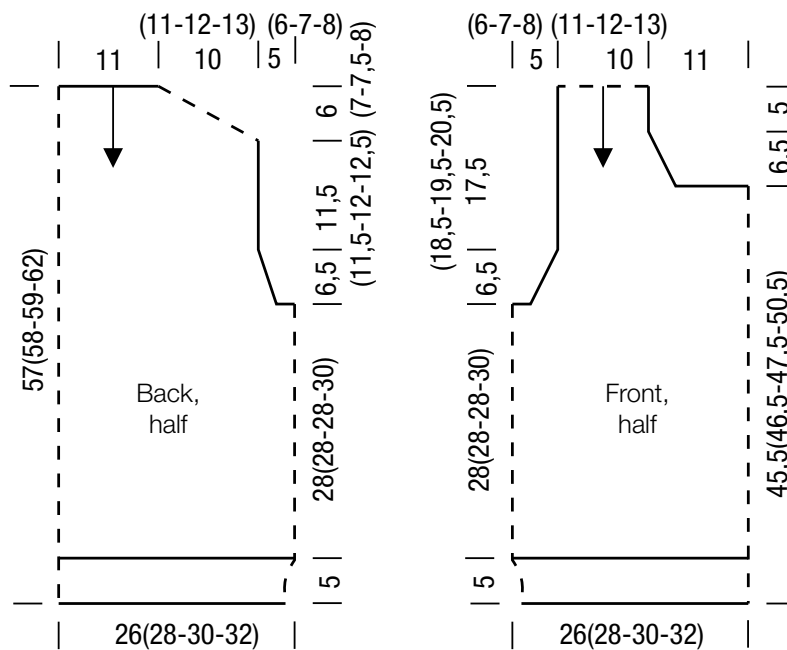
**Chart 2**



4-st rep

**Chart key:**

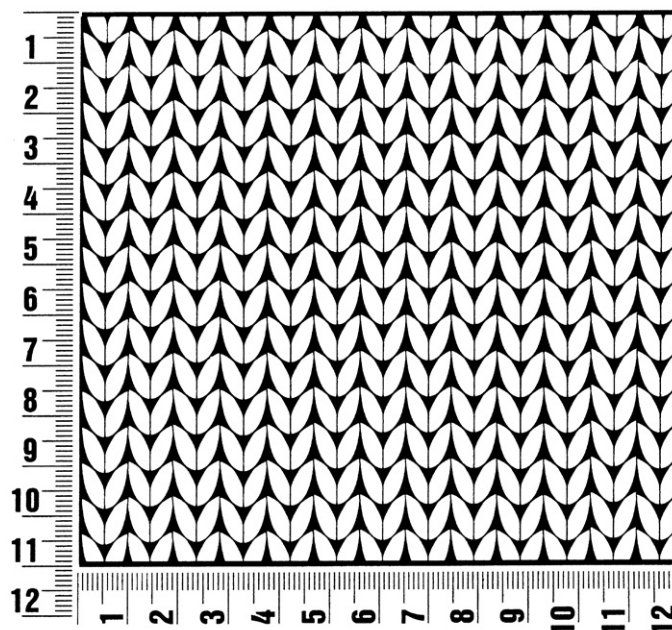
- = k1
- = yo
- = k2tog



## Gauge Swatch

### Before you begin ...

...make a gauge swatch. Use the recommended needles, yarns and pattern stitch for your gauge swatch. It should measure approx. 12 cm x 12 cm. Cast-on and bind-off rows, as well as selvedge stitches should not be included in the measurement. Pin your swatch and block it as you would the finished pieces of the garment. Count stitches and rows over 10 cm. If your gauge swatch is too small, switch to larger needles. If your gauge swatch is too big, switch to smaller needles.



## Abbreviations

**beg** = begin(ning) · **ch** = chain · **cont** = continue · **dec** = decreas(e)(ing) · **inc** = increas(e)(ing) · **k** = knit · **kwise** = as if to knit  
**meas** = measures · **M1L** = lift strand between sts from front to back and knit this strand through the back loop · **M1R** = lift strand between sts from the back and knit this strand through the front loop · **patt** = pattern · **pm** = place marker · **p** = purl  
**pwise** = as if to purl · **rem** = remain(ing) · **rep** = repeat(s) · **rev St st** = reverse stockinette stitch · **rnd(s)** = round(s) · **RS** = right side · **sc** = single crochet · **skp** = slip 1 stitch as if to knit, knit 1 stitch, pass slipped stitch over knitted stitch · **sk2p** = slip 1 stitch as if to knit, knit 2 together, pass slipped stitch over knitted stitch · **s2kp** = slip 2 stitches as if to knit, k 1 stitch, pass slipped stitches over knitted stitch · **sl** = slip · **st(s)** = stitch(es) · **St st** = stockinette stitch · **tbl** = through the back loop · **tog** = together · **wyib** = with yarn in back of work · **wyif** = with yarn in front of work · **WS** = wrong side · **yo(s)** = yarn over(s)

### Publisher's Info

**Publisher:** Lana Grossa GmbH, Gaimersheim, [www.lana-grossa.com](http://www.lana-grossa.com)

**Photographer:** Milan Soos, [www.milansoos.com](http://www.milansoos.com)